

SANITARY SEWER LIFT STATION AND FORCE MAIN FOR LATERALS 317-322, SWI
PROJ. NO. 468-82286 (#741546)
BUILT BY NOWAK CONSTRUCTION
BOOKED 1-28-94 AS PER PLAN

SEE J-225
EXISTING 8" SEWER

13+30.11 EXIST MH
13+101.51 45° BEND
12+44.91 45° BEND
12+79.06 45° BEND
12+32.52 to 12+10.52 2" FEEL CASING
11+86.52 2" 22 1/2° BENDS
11+81.52 AIR RELEASE VALVE
12+82.91 45° BEND

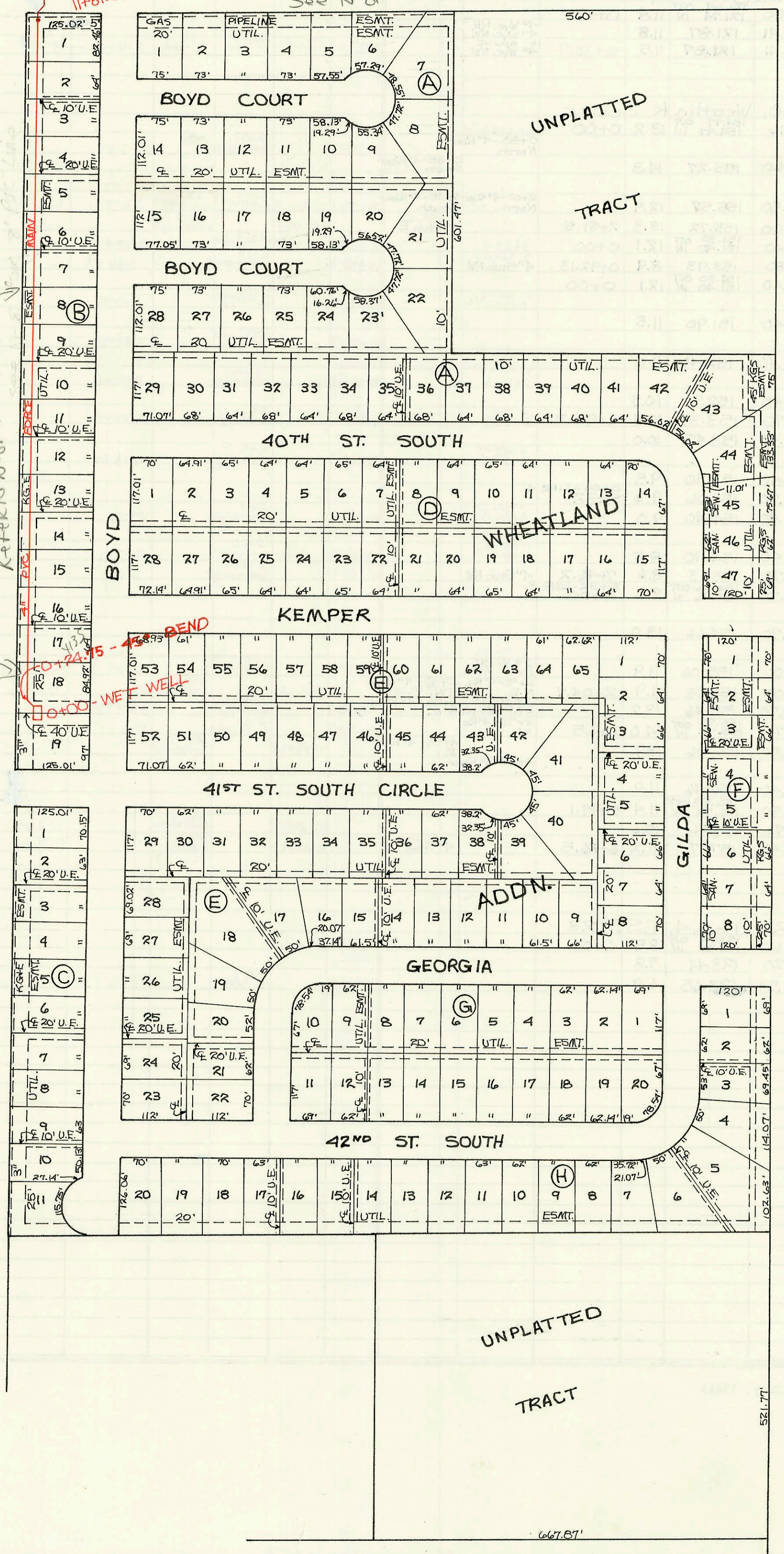
MAC ARTHUR ROAD

N

SCALE: 1" = 150'
M/P

4" force main
NOT FOR
Bldg connections
see N-81
and N-124

Note: force main
NO COM TO THIS LINE
REFER TO N-81 FOR 8" PUC



GAS	PIPELINE	ESMT.
1	2	3
75'	73'	73'

ESMT.	ESMT.
6	7
57.29'	57.29'

ESMT.	ESMT.
9	10
55.34'	55.34'

ESMT.	ESMT.
22	23
58.13'	58.13'

ESMT.	ESMT.
34	35
64'	64'

ESMT.	ESMT.
7	8
64'	64'

ESMT.	ESMT.
21	20
64'	64'

ESMT.	ESMT.
45	44
62'	62'

ESMT.	ESMT.
4	5
66'	66'

ESMT.	ESMT.
6	7
66'	66'

ESMT.	ESMT.
8	9
66'	66'

ESMT.	ESMT.
1	2
69'	69'

ESMT.	ESMT.
3	4
62'	62'

ESMT.	ESMT.
7	8
62'	62'

ESMT.	ESMT.
9	8
62'	62'

UNPLATTED TRACT

UNPLATTED TRACT

CONSTRUCTION RECORD						SERVICE RECORD						
STATION	ELEVATION		Depth	MANHOLE	4-INCH "Y" BRANCHES		No. of Permit		House Number		DATE OF PERMITS	
	Ground	Grade			North West	South East	North West	South East	North West	South East	North West	South East
Sanitary Sewer Lift Station and Force Main For Lateral 317-322, SW1												
0+00	121.80	107.25 114.45 IN	14.6	0+00								
0+24.75	120.30	114.50	5.8									
1+00	119.90	114.65	5.3									
2+00	119.90	114.85	5.1									
3+00	120.00	115.05	5.0									
4+00	120.20	115.25	5.0									
5+00	120.40	115.45	5.0									
6+00	120.70	115.65	5.1									
7+00	121.00	115.85	5.2									
8+00	121.20	116.05	5.2									
9+00	121.70	116.25	5.5									
10+00	122.20	116.45	5.8									
11+00	122.70	116.65	6.1									
11+81.52	123.00	116.81	6.2									
11+86.52	123.30	116.72	6.6									
12+00	123.60	116.69	6.9									
12+32.52	124.20	116.47	7.7									
12+70.52	123.00	116.22	6.8									
12+79.06	122.40	116.18	6.2									
12+82.91	122.50	112.33	10.2									
12+94.91	123.80	112.33	11.5									
13+06.51	123.90	118.93	5.0									
	124.27	119.04 116.68 OUT	7.6	13+30.11								