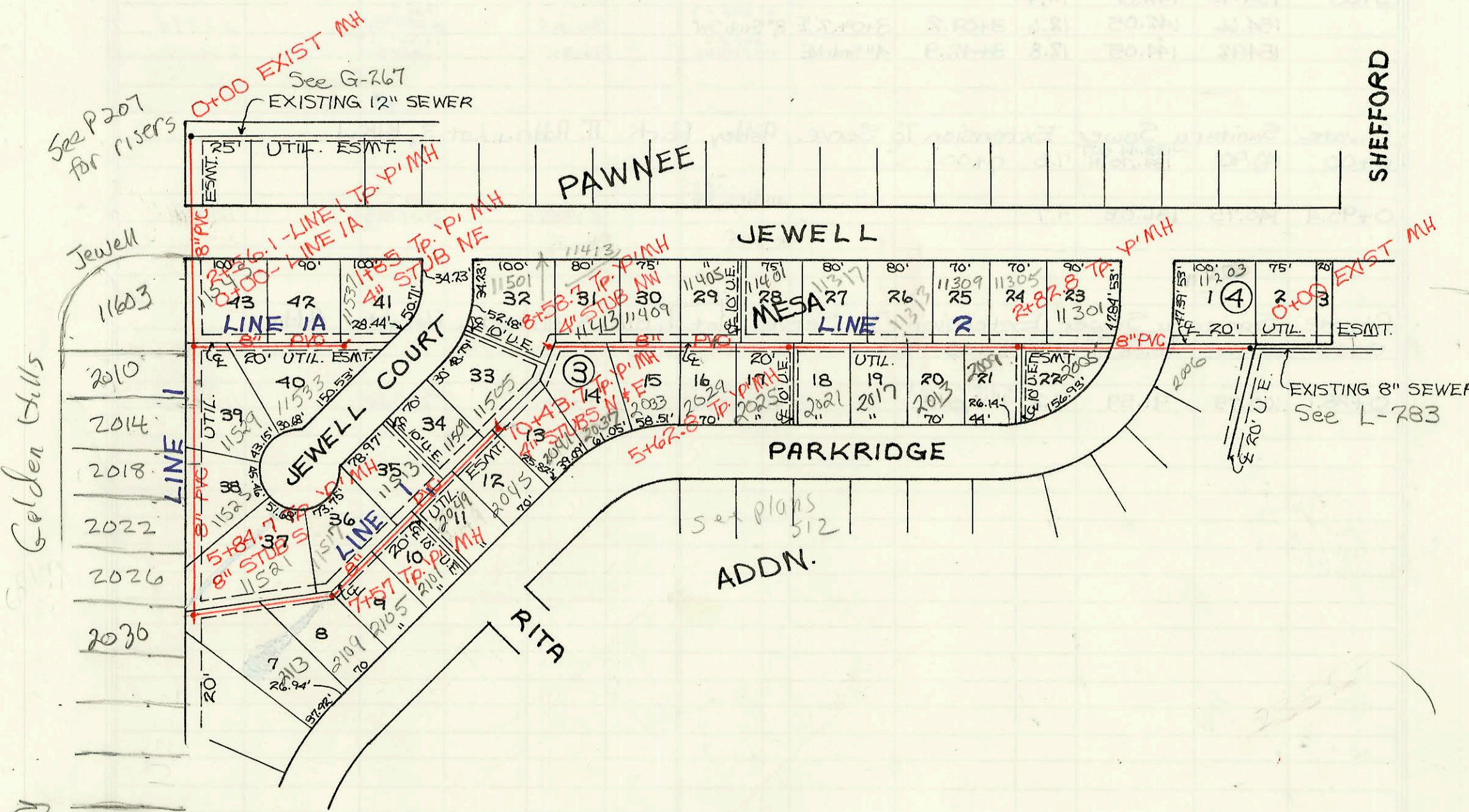
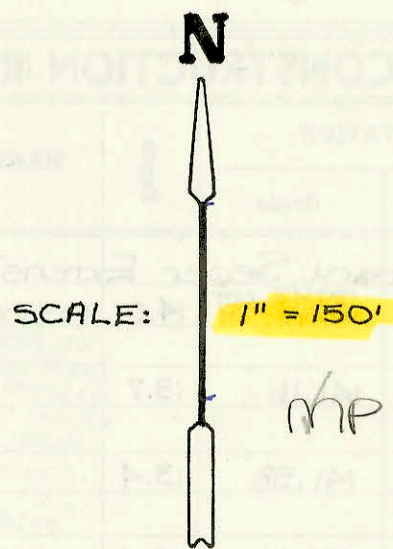


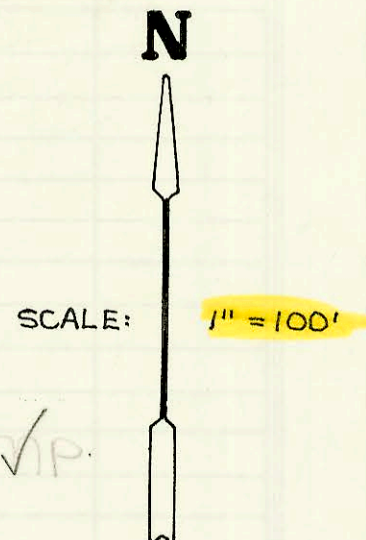
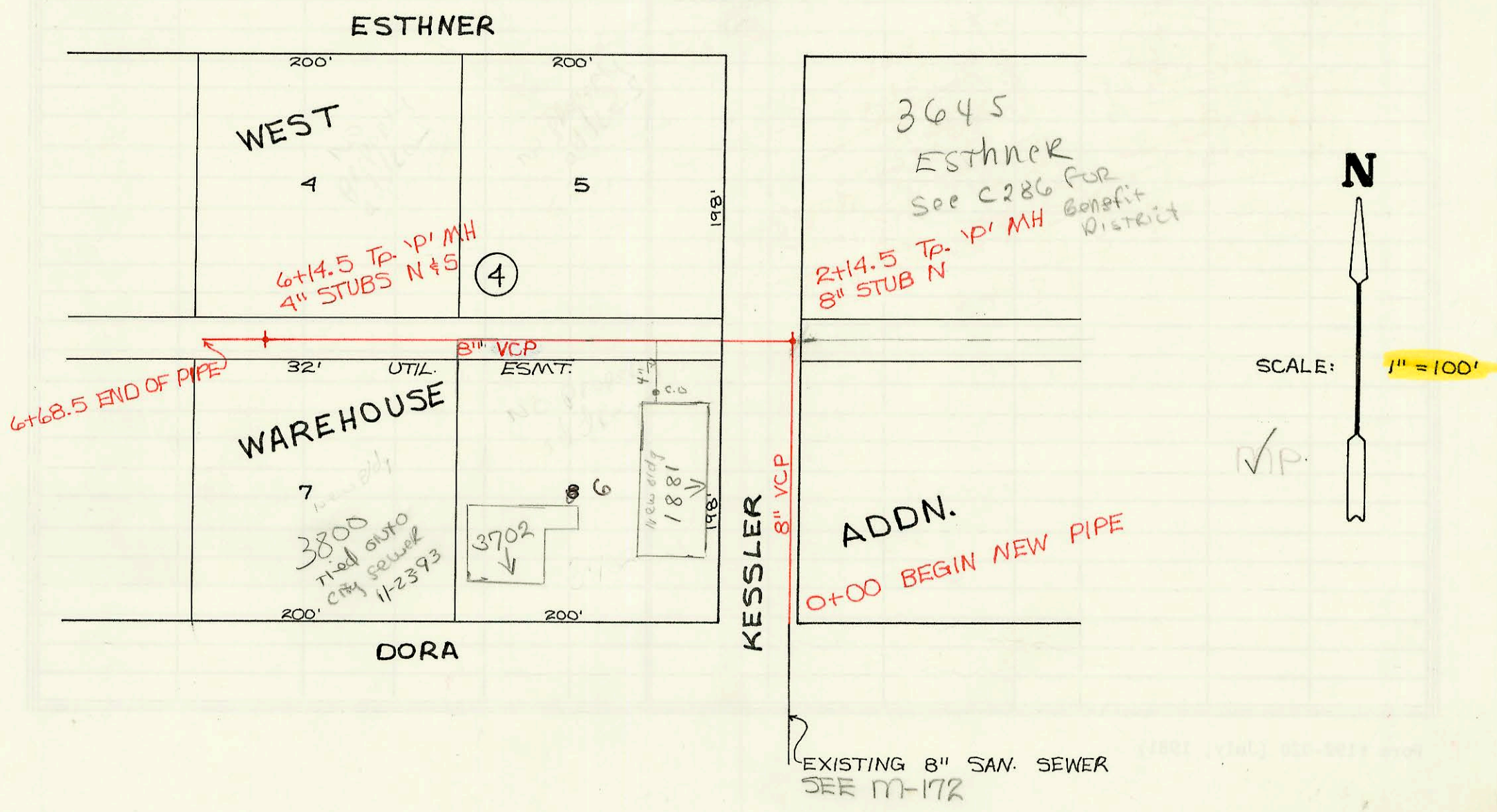
LATERAL 10, MAIN 13, SW1
PROJ. NO. 468-82343 (741652)
BUILT BY NOWAK CONST. CO.
BOOKED 2-11-94 AS PER PLAN



Golden Hills

N242

LATERAL 13, MAIN 14, S.S.#22
PROJ. NO. 468-82342 (741678)
BUILT BY DONDLINGER CONST. CO.
BOOKED 2-14-94 AS PER PLAN



CONSTRUCTION RECORD							SERVICE RECORD					
STATION	ELEVATION		Depth	MANHOLE	4-INCH "Y" BRANCHES		No. of Permit		House Number		DATE OF PERMITS	
	Ground	Grade			North West	South East	North West	South East	North West	South East	North West	South East
Lateral 10, Main 13, SW1												
0+00	144.80	127.37 OUT 127.91 IN	17.0	0+00								
1+00	145.00	128.31	16.7									
2+00	144.70	128.71	16.0									
	144.90	128.94 OUT 129.04 IN	16.0	0+00-LINE 2+56.1	1A							
3+00	144.70	129.22	15.5		3+21 4" W 12.5 V 28 H	3+00-4" Riser E. 136.75	94-6355-7	2010 Golden Hills	11529 w Jewell	5-28-02	4-29-94	
4+00	144.90	129.62	15.3		3+27 4" W 13 V 24 H	4+00-4" Riser E. 137.15	94-5063-7	2014 Golden Hills	11545 Jewell	1-13-03	4-11-94	
5+00	145.10	130.02	15.1		4+44.7 4" W 12 V 29 H			2022 Golden Hills		1-13-03		
	145.50	130.36 OUT 132.36 IN	15.1	5+84.7	5+60.7 4" W 11.5 V 29 H	8" Stub S	94-578-7	2026 Golden Hills		4-30-03		
6+00	145.50	132.57	12.9		5+66.7 4" W 12 V 30 H			2030 Golden Hills				
7+00	145.90	133.99	11.9		4" SDR 35 9+95.7		94-1166-7	11521 Jewell	2104 Parkridge	1-18-94	7-11-97	
	146.00	134.75 OUT 134.85 IN	11.3	7+57	4" SDR 35 8+08.0		94-3026	2105 S Parkridge			3-7-96	
8+00	146.00	135.02	11.0		4" SDR 35 8+14.0	4" SDR 35 8+59.0	94-1167-7	11517 Jewell	2101 Parkridge	1-18-94	1-18-96	
9+00	145.90	135.42	10.5		4" SDR 35 9+33.0	4" SDR 35 8+20.0	94-5062-7	11513 Jewell	2057 Parkridge	4-11-94	10-3-95	
	145.80	135.82	10.0		4" SDR 35 9+71.1	4" SDR 35 9+87.7	94-5062-7	11509 Jewell	2045 Parkridge	4-26-94	8-14-95	
Lateral 13, Main 14, SS# 22												
0+00	145.70	136.00	9.7	10+43.7	4" SDR 35 0+20-4" Riser N. 136.50	4" SDR 35 4" Stub E	94-5081-7	11505 Jewell	2041 S Parkridge	4-26-94	6-21-95	
1+00	145.50	133.68	11.8		4" SDR 35 1+42.0		94-10964-7	11533 w Jewell		7-7-94		
	145.90	136.00	9.9	1+85	4" SDR 35 0+24.6		94-13463-7	11537 w Jewell		2-18-94		
2+00	142.60	131.24	11.4		4" SDR 35 1+87.8		94-2486-7	11501 w Jewell		2-23-94		
3+00	143.20	132.20	11.0	2+82.8	4" SDR 35 2+69.8	4" SDR 35 2+53.8	94-10992-7	11305 w Jewell	2005 Parkridge	7-12-94	12-22-95	
4+00	143.40	132.28	11.1		4" SDR 35 3+31.8	4" SDR 35 3+26.0	94-10987-7	11309 Jewell	2009 Parkridge	7-7-94	2-9-95	
5+00	143.90	132.74	11.2		4" SDR 35 4+28.8	4" SDR 35 3+24.3	94-18248-7	11313 Jewell	2013 Parkridge	11-7-94	2-9-95	
6+00	144.50	133.21	11.3		4" SDR 35 4+95.8	4" SDR 35 4+46.3 Tap	94-18249-7	11317 Jewell	2017 Parkridge	11-7-94	2-9-95	
7+00	145.00	133.50	11.5	5+62.8	4" SDR 35 5+76.3	4" SDR 35 5+26.8	94-16497-7	11401 w Jewell	2005 Parkridge	10-6-94	2-29-95	
8+00	145.00	133.69	11.3		4" SDR 35 6+51.8	4" SDR 35 6+57.2	94-16499-7	11405 Jewell	2005 Parkridge	10-6-94	2-29-95	
9+00	145.50	134.20	11.3		4" SDR 35 7+40.7	4" SDR 35 7+19.2	94-10033-7	11409 Jewell	2029 Parkridge	6-30-95	6-21-95	
10+00	145.60	134.70	10.9		4" SDR 35 8+19.7	4" SDR 35 8+14.7	94-2250-7	11413 w Jewell	2032 Parkridge	11-7-94	6-21-95	
	145.50	135.00	10.5	8+58.7	4" SDR 35 4" Stub NW		94-10973	11501 w Jewell	2001 Parkridge	7-7-94	6-21-95	
0+00	108.70	99.72	9.0									
1+00	108.10	99.92	8.2									
2+00	108.20	100.12	8.1									
	108.30	100.15 OUT 100.25 IN	8.2	2+14.5	8"							
3+00	108.20	100.59	7.6			4" SCH 40 CITY 3+22.1 TAP	2000 02294	1881 Kessler			10/19/00	
4+00	109.10	100.99	8.1			4" SDR 35 4+49.5	94-12773-7	3702 DORA			8-7-95	
5+00	110.60	101.39	9.2									
6+00	110.90	101.79	9.1									
	110.95	101.85 OUT 101.95 IN	9.1	6+14.5	4" Stub N	4" Stub S	93-2935-7	3800 w DORA			11-9-93	
6+68.5	110.20	102.15	8.1									

LINE 1

LINE 1A

LINE 2