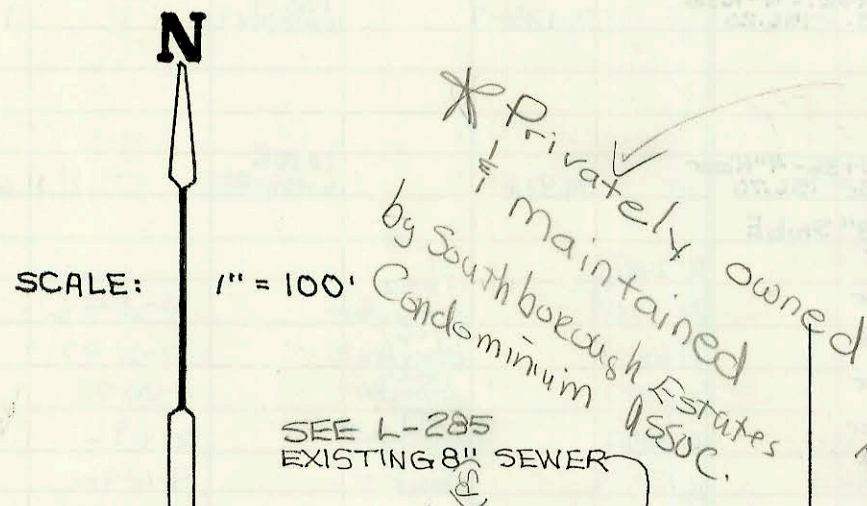
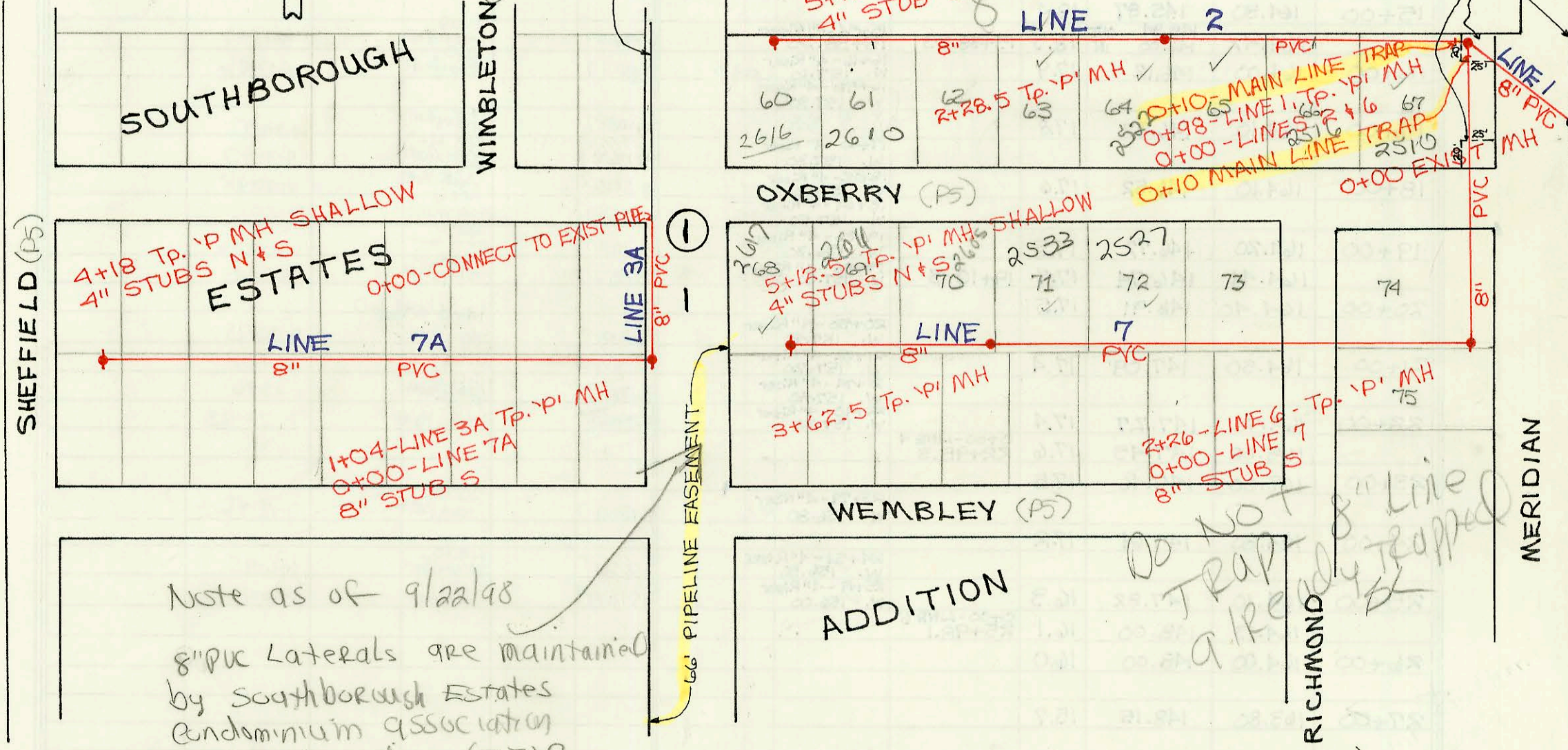


LATERAL 316, S.W.I.
 PROD. NO. 468-82270 (741660)
 BUILT BY DONDLINGER CONST. CO.
 BOOKED 3-14-94 AS PER PLAN

SCALE: 1" = 100'

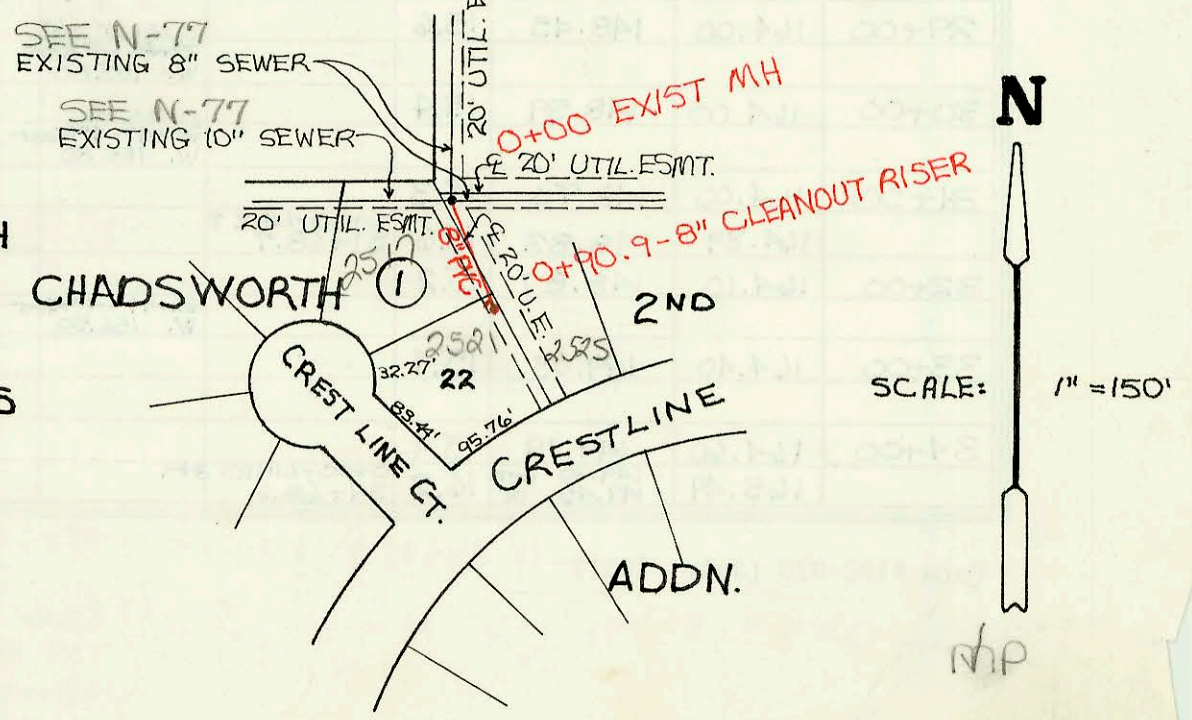


PRIVATE SANITARY SEWER EXTENSIONS TO
 SERVE SOUTHBOROUGH ESTATES
 PRIV. PROJ. NO. 387 PPS (607861)
 BUILT UTILITY MAINTENANCE CONTRACTORS
 BOOKED 3-15-94 FROM AS BUILTS



Note as of 9/22/98
 8" PVC Laterals are maintained
 by Southborough Estates
 Condominium Association
 4911 S. Meridian (67217)
 per Jeff Lang

PRIVATE SANITARY SEWER EXTENSION
 TO SERVE LOT 22, BIK. 1, CHADSWORTH
 2ND ADDITION
 PRIV. PROJ. NO. 428 PPS (607861)
 BUILT BY MIES CONST. CO.
 BOOKED 3-16-94 FROM AS BUILTS



CONSTRUCTION RECORD							SERVICE RECORD					
STATION	ELEVATION		Depth	MANHOLE	4-INCH "Y" BRANCHES		No. of Permit		House Number		DATE OF PERMITS	
	Ground	Grade			North West	South East	North West	South East	North West	South East	North West	South East
Lateral	316.5	SW1										
0+00	102.61	91.26 OUT 93.41 IN	11.4	0+00								
1+00	102.70	95.09	7.6									
	102.93	95.59 OUT 95.62 IN	7.9	1+29.7				95-148357	3828 W 21st S			9-20-95
2+00	103.30	96.36	6.9									
3+00	104.20	97.40	6.8									
	104.64	97.45	7.2	3+04.7	4" SDR 35 4" Stub SW			94-14057	3920 W 21st S			2-1-94
Private Sanitary Sewer Extensions To Serve Southborough Estates												
Line 1	0+00	91.50	74.12 OUT 79.09 IN	17.4	0+00							
		90.40	79.48 OUT 79.58 IN	10.9	0+00-Line 2 & 6 0+98							
LINE 2	0+00	90.40	79.48 OUT 79.58 IN	10.9	0+00			94-15871-7	2570 W Oxberry			9-28-94
	0+10											
	1+00	90.50	79.88	10.6				1997-00243	2516 Oxberry			7-22-99
	2+00	90.40	80.18	10.2								
		90.20	80.27	9.9	2+28.5			94-128667	2582 Oxberry			8-12-94
	3+00	90.20	80.48	9.7								
	4+00	89.70	80.78	8.9								
								5-2829-298	2610 Oxberry			8-2-99
	5+00	89.40	81.08	8.3								
		89.00	81.15	7.9	5+22.5			98-28947	2616 Oxberry			11-2-98
LINE 3A	0+00	89.90	80.73	9.2	0+00							
	1+00	89.80	81.00	8.8								
		89.80	81.01	8.8	0+00-LINE 7A 1+04							
LINE 6	0+00	90.40	79.48 OUT 79.58 IN	10.9	0+00-LINE 2 & 0+98-LINE 1 0+00							
	0+10											
	1+00	92.00	79.88	12.1								
	2+00	91.20	80.18	11.0								
		91.40	80.26	11.1	0+00-LINE 7 2+26			2000- 02107	5111 Meridian #245			12-13-00
LINE 7	0+00	91.40	80.26 OUT 80.36 IN	11.1	2+26-LINE 6 0+00	8" Stub S						
	1+00	91.70	80.66	11.0								
	2+00	90.80	80.96	9.8				98-200627	2527 Oxberry			10-21-98
	3+00	90.50	81.26	9.2				94-175977	2533 Oxberry			8-12-94
		90.00	81.45	8.6	3+62.5							
	4+00	90.00	81.56	8.4								
								2033 Oxberry	2611 Oxberry			1-23-02
	5+00	89.70	81.86	7.8								
		89.30	81.90	7.4	5+12.5							
LINE 7A	0+00	89.80	81.01 OUT 83.01 IN	8.8	1+04-LINE 3A 0+00	4" Stub N 4" Stub S		94-128677	2617 Oxberry			8-12-94
	1+00	90.20	83.56	6.6								
	2+00	90.70	84.11	6.6								
	3+00	90.50	84.66	5.8								
	4+00	90.00	85.21	4.8								
		89.80	85.31	4.5	4+18	4" Stub N 4" Stub S						
Private Sanitary Sewer Extension To Serve Lot 22, BIK. 1, Chadsworth 2 ND Addition												
	0+00	165.50	155.38 OUT 156.56 IN	10.1	0+00	4" SDR 35 0+28.0 4" SDR 35 0+85.0		93-31367	2517 Crestline			12-22-93
	0+90.9	165.20	156.86	8.3	0+90.0	4" SDR 35 W 21st S		94-42817	2521 Crestline			3-9-94