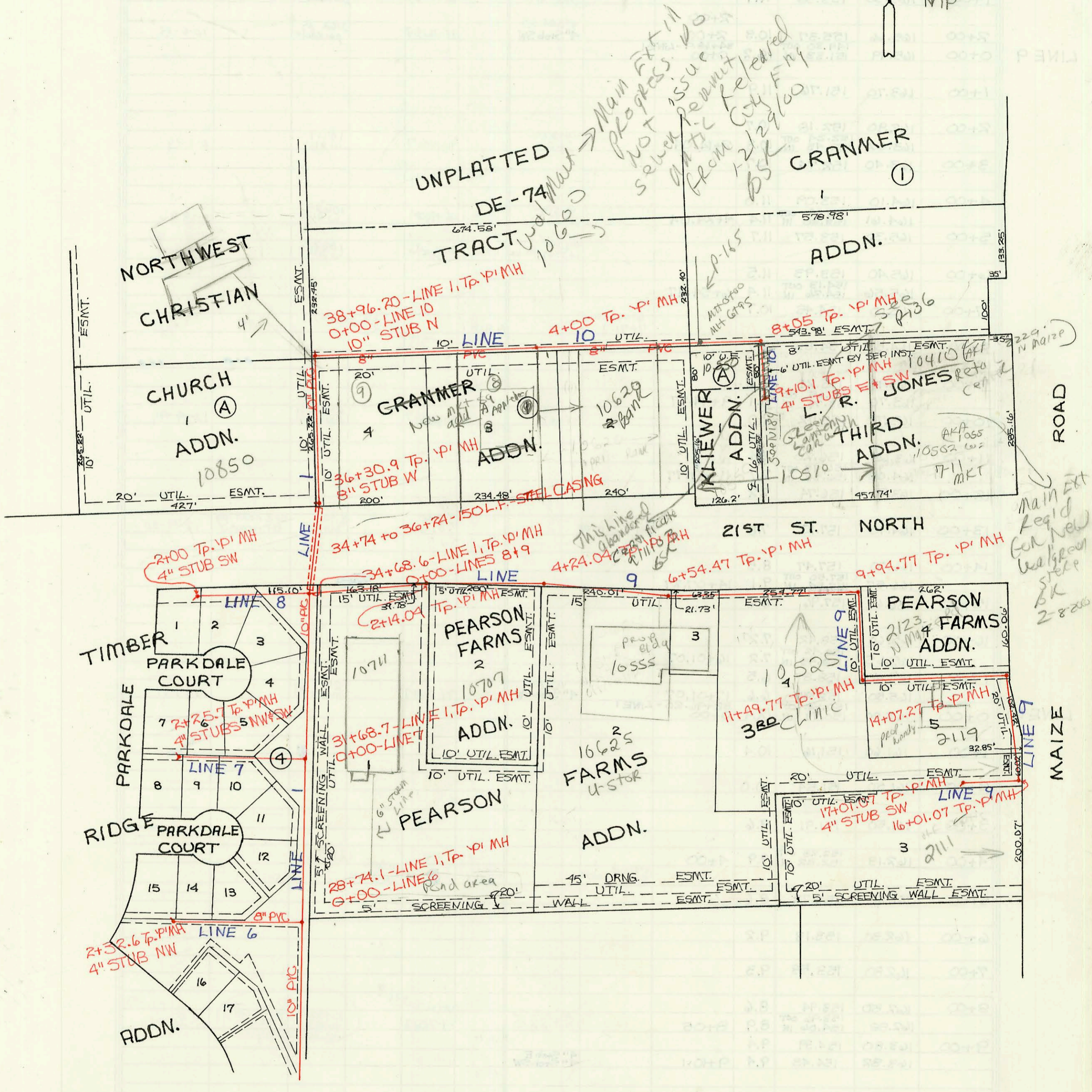
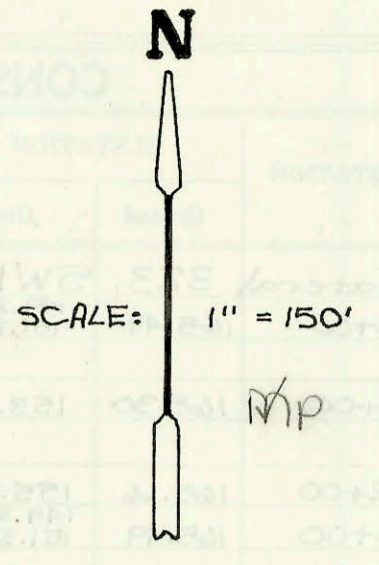


LATERAL 323, S.W.1.
PROJ. NO. 468-82314 (741488)
BUILT BY DULING CONST. CO.
BOOKED 3-18-94 FROM AS BUILTS



UNPLATTED
DE-74 TRACT

CRANMER
ADDN.

NORTHWEST
CHRISTIAN
ADDN.

CHURCH
ADDN.
10850

CRANMER
ADDN.
10629

KLEINER
ADDN.

THIRD
ADDN.
10510

JONES
ADDN.
10410

21ST ST. NORTH

PEARSON
FARMS
ADDN.
10707

PEARSON
FARMS
ADDN.
2123

PEARSON
FARMS
ADDN.
16625

TIMBER
PARKDALE
COURT

PARKDALE
COURT

RIDGE
PARKDALE
COURT

PARKDALE
COURT

ADDN.

Main Ext
Reg'd
for New
Water
Sewer
S&K
2-8-2006

MAIZE

CONSTRUCTION RECORD

SERVICE RECORD

STATION	ELEVATION		Depth	MANHOLE	4-INCH "Y" BRANCHES		No. of Permit		House Number		DATE OF PERMITS	
	Ground	Grade			North West	South East	North West	South East	North West	South East	North West	South East
Lateral 323 SW1 (Continued From Page N-100)												
35+00	165.30	149.54	15.8									
36+00	163.00	149.85	13.2									
37+00	162.92	149.94 OUT 150.23 IN	13.0	36+30.9	8" Stub W							
38+00	162.50	150.45	12.1									
	163.00	150.58	12.4	0+00-LINE 10 38+96.20	10" Stub N							
0+00	164.40	155.04 OUT 155.67 IN	9.4	0+00								
	165.98	156.00	10.0	0+53.9	4" Stub NE							10-4-95
0+00	165.05	144.88 OUT 146.94 IN	20.2	0+81.1-LINE 1 0+00								
				0+50-4" Riser W. 155.30								2-24-96
1+00	163.00	148.40	14.6									
				1+15-4" Riser W. 155.10								6-7-96
2+00	163.20	149.85	13.4									
	163.90	150.20 OUT 150.20 IN	13.7	2+24	4" Stub SW							3-14-96
3+00	163.20	150.48	12.7									
				2+77.0								5-12-97
4+00	163.40	150.85	12.6									
	164.35	151.05 OUT 151.07 IN	13.3	4+54	4" Stub N							2-3-97
5+00	163.60	151.30	12.3									
				3+75.0								11-21-95
6+00	164.40	151.80	12.6									
	165.14	152.06 OUT 152.09 IN	13.1	6+52	4" Stub							4-17-97
7+00	165.50	152.33	13.2									
	166.22	152.72 OUT 152.88 IN	13.5	7+78	4" Stub							4-22-96
8+00	166.00	152.94	13.1									
				7+67.0 top								
9+00	166.30	153.19	13.1									
	166.56	153.20 OUT 153.36 IN	13.4	9+04								
10+00	164.70	153.66	11.0									
				10+19.0								11-8-96
11+00	164.80	154.07	10.7									
	164.85	154.08 OUT 154.20 IN	10.8	0+00-LINE 3A 11+03	4" Stub							3-14-96
	164.20	154.60	9.6	11+81	4" Stub NE							7-2-96
0+00	164.85	154.08 OUT 154.27 IN	10.8	11+03-LINE 3 0+00	4" Stub SE							9-12-96
	164.44	154.46	10.0	0+54	4" Stub N							12-14-95
0+00	165.08	147.45 OUT 149.38 IN	17.6	22+95.3-LINE 1 0+00								4-21-97
1+00	163.20	150.85	12.4									
				2+12.0								
2+00	163.40	152.32	11.1									
	164.35	153.34 OUT 153.52 IN	11.0	0+00-LINE 4A 2+69								1-24-97
3+00	164.30	153.66	10.6									
	165.02	154.02	11.0	3+78	4" Stub SE							9-17-97
0+00	164.35	153.34 OUT 153.49 IN	11.0	2+69-LINE 4 0+00								4-21-96
				0+47.0								7-14-95
1+00	163.40	153.90	9.5									
				1+01.0								6-11-95
2+00	163.60	154.31	9.3									
	164.26	154.71	9.6	2+98.9	4" Stub N							2-13-95
0+00	164.13	148.00 OUT 149.92 IN	16.1	25+98.1-LINE 1 0+00								12-5-94
				0+12.0								4-1-95
1+00	163.10	152.32	10.8									
				1+77.9								2-19-98
2+00	163.40	152.72	10.7									
	164.20	153.20	11.0	2+34.4	4" Stub SW							9-20-95
0+00	164.42	148.42 OUT 150.39 IN	16.0	28+74.7-LINE 1 0+00								2-3-97
1+00	163.00	151.87	11.1									
				1+24 N/C								10-6-93
2+00	163.80	153.36	10.4									
	164.71	153.84	10.9	2+32.6	4" Stub NW							10-6-93
0+00	164.39	148.82 OUT 150.83 IN	15.6	31+68.7-LINE 1 0+00								10-6-93
1+00	165.70	152.74	13.0									
				1+12 N/C								10-6-93
2+00	166.00	154.64	11.4									
	166.23	155.13	11.1	2+25.7	4" Stub SW							8-18-97

LINE 1
(Cont'd.)

LINE 2

LINE 3

LINE 3A

LINE 4

LINE 4A

LINE 5

LINE 6

LINE 7