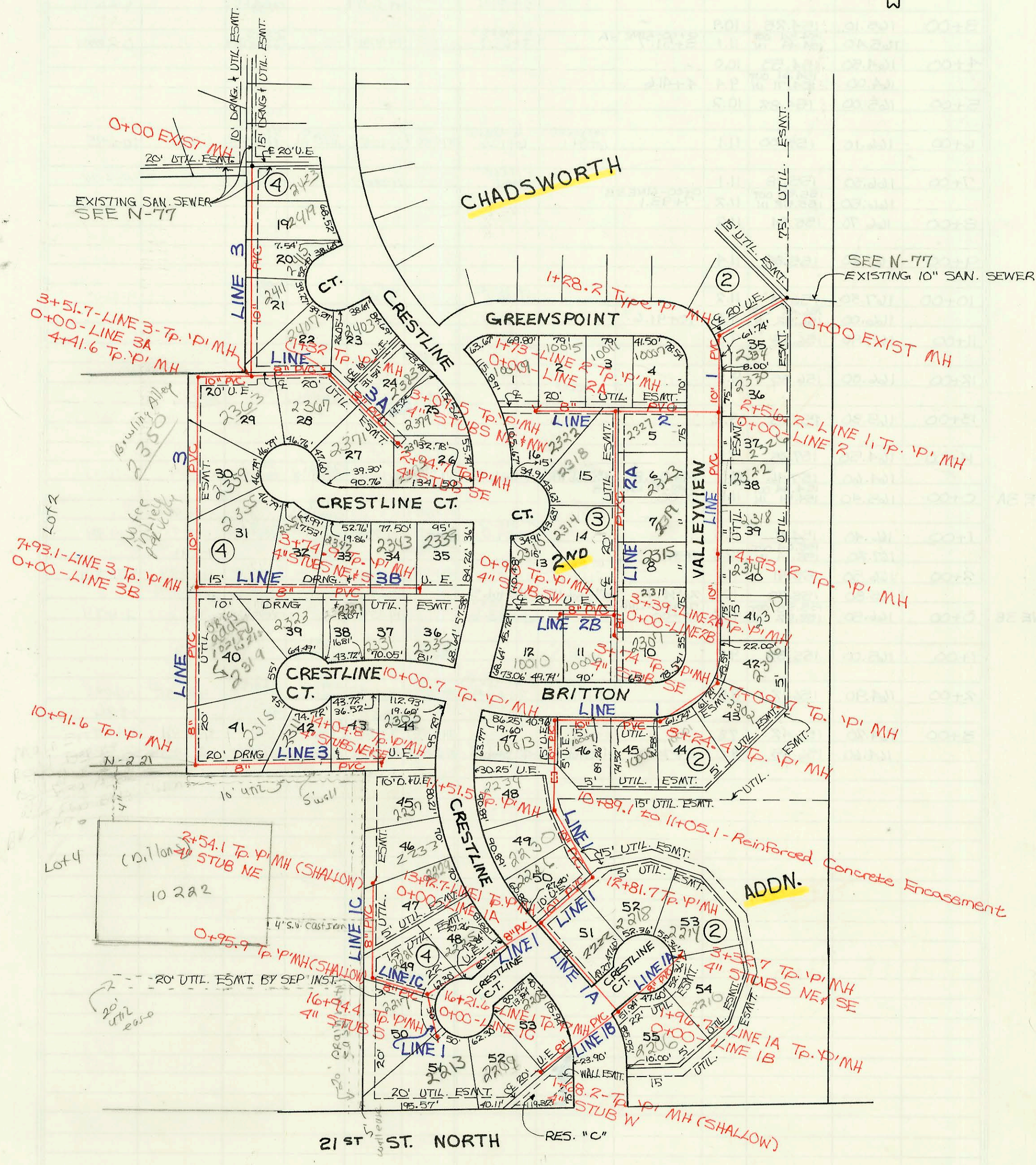
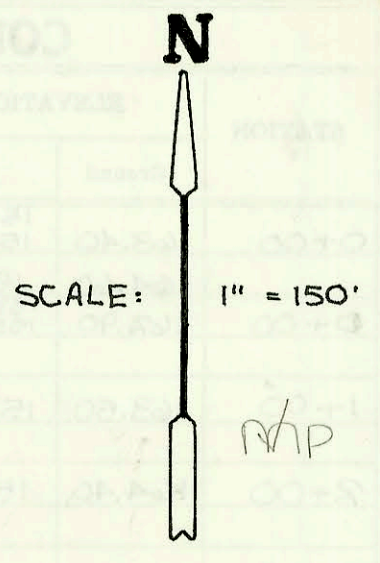


LATERAL 101, WESTLINK SEWER
PROJ. NO. 468-82175 (741702)
BUILT BY UTILITY CONTRACTORS, INC.
BOOKED 4-14-94 AS PER PLAN



CONSTRUCTION RECORD							SERVICE RECORD					
STATION	ELEVATION		Depth	MANHOLE	4-INCH "Y" BRANCHES		No. of Permit		House Number		DATE OF PERMITS	
	Ground	Grade			North West	South East	North West	South East	North West	South East	North West	South East
LINE 2B 0+00	163.40	154.08 OUT 154.18 IN	9.3	3+39-LINE 2A 0+72.0	4" SDR35 0+38.0	4" SDR35 0+38.0	95-16657	95-15207	2310 Crestline	10590 Benton	10-17-95	9-25-95
0+00	164.60	154.54	10.1	0+90	4" SDR35 0+11.1	4" SDR35 0+11.1	95-48657	95-48657	2411 Crestline	8110 Benton	3-20-95	3-20-95
LINE 3 0+00	162.90	153.51 OUT 153.76 IN	9.4	0+00	4" SDR35 0+23.6	4" SDR35 0+23.6	94-8041-7		2423 Crestline			5-20-94
1+00	163.50	153.88	9.6				98-16517		2449 Crestline			8-25-91
2+00	164.40	154.06	10.3				94-0970-7		2415 Crestline			6-24-94
3+00	165.10	154.25	10.9				94-6037-7		2411 Crestline			4-25-94
3+00	165.40	154.34 OUT 154.44 IN	11.1	0+00-LINE 3A 3+51.7	4" SDR35 3+65.7	4" SDR35 3+65.7	94-0970-7		2363 Crestline			6-24-94
4+00	164.50	154.53	10.0									
4+00	164.00	154.61 OUT 154.71 IN	9.4	4+41.6								
5+00	165.00	154.82	10.2									
6+00	166.10	155.00	11.1		4" SDR35 6+10.6	4" SDR35 6+10.6	97-988-7	95-20188-7	2350 Mater Pd	2359 Crestline	6-4-97	12-4-95
7+00	166.30	155.18	11.1									
7+00	166.50	155.35 OUT 155.52 IN	11.2	0+00-LINE 3B 7+93.1	4" SDR35 7+20.5	4" SDR35 7+20.5	94-20465-7		2355 N Crestline			12-16-94
8+00	166.70	155.54	11.2									
9+00	167.20	155.84	11.4									
10+00	167.30	156.14	11.2									
10+00	166.00	156.42 OUT 156.52 IN	9.6	10+91.6	4" SDR35 11+74.6	4" SDR35 11+74.6		2500 02090	2325 Crestline			9-21-00
11+00	165.90	156.64	9.3									
12+00	166.00	156.85	9.2									
13+00	165.30	157.15	8.2									
14+00	164.50	157.45	7.1									
14+00	164.60	157.46	7.1	14+04.8	4" SDR35 4" Stub NE	4" SDR35 4" Stub SE	90-299-7	98-10567	2302 Crestline	2317 Crestline	1-8-97	6-16-98
LINE 3A 0+00	165.40	154.34 OUT 154.51 IN	11.1	3+51.7-LINE 3 0+00	4" SDR35 0+71.0	4" SDR35 0+71.0	94-7642-7	94-111-1	2407 Crestline		5-19-94	
1+00	166.40	154.91	11.5				98-16337	94-77057	2408 Crestline	2367 Crestline	8-31-98	5-19-94
1+00	167.20	155.04 OUT 155.14 IN	12.2	4+32	4" SDR35 2+16.7	4" SDR35 2+16.7	98-77157		2323 Crestline		9-11-97	
2+00	166.50	155.41	11.1				94-18117	98-15418-7	2371 Crestline	2374 Crestline	11-10-94	9-19-98
2+00	165.80	155.79	10.0	2+94.7	4" SDR35 4" Stub NE	4" SDR35 4" Stub S	98-529-7		2395 Crestline	2395 Crestline	1-14-98	
LINE 3B 0+00	166.50	155.35 OUT 155.52 IN	11.2	7+93.1-LINE 3 0+00	4" SDR35 0+43.6	4" SDR35 0+43.6	94-1591-7		2319 Crestline			2-4-94
1+00	165.00	155.82	9.2				96-290-7		2351 Crestline			1-8-96
2+00	164.90	156.12	8.8				95-5674-7	96-508-7	2347 N Crestline	2307 Crestline	4-21-95	4-12-91
2+00	164.90	156.12	8.8				96-292-7		2351 Crestline			1-8-96
3+00	164.20	156.42	7.8				94-14947	98-11325-7	2343 Crestline	2325 Crestline	9-14-94	6-24-91
3+00	164.60	156.65	8.0	3+74.9	4" SDR35 4" Stub NE	4" SDR35 4" Stub S	96-2640-7	96-2312-7	2329 Crestline	2335 Crestline	2-29-96	2-22-91

