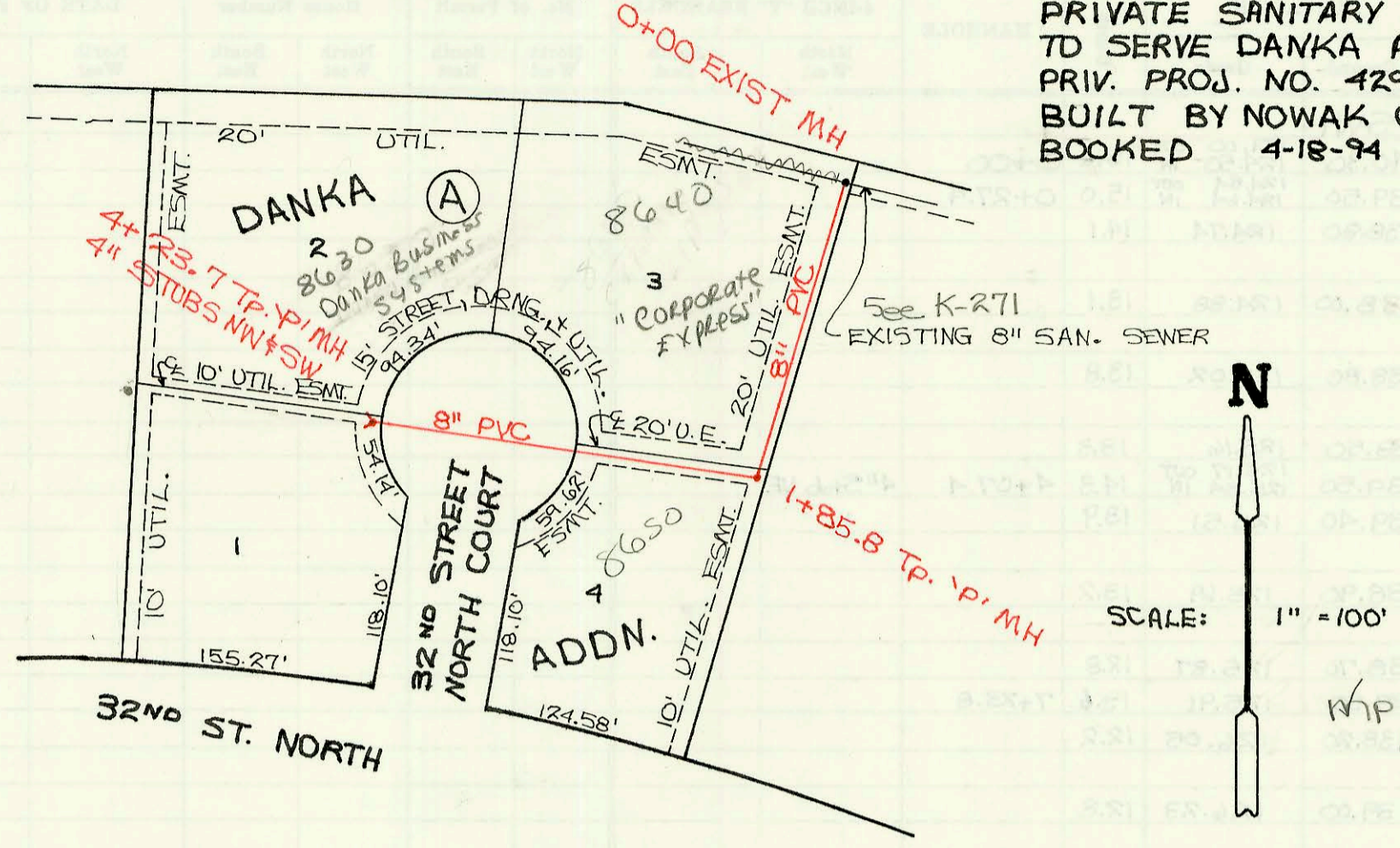


K-96 (NORTHEAST EXPRESSWAY)

PRIVATE SANITARY SEWER EXTENSION TO SERVE DANKA ADDITION
PRIV. PROJ. NO. 429 PPS (607861)
BUILT BY NOWAK CONSTRUCTION CO.
BOOKED 4-18-94 FROM AS BUILTS



LATERAL 12, MAIN 14, S.S.#22
PROJ. NO. 468-82267 (741413)
BUILT BY W. B. CARTER CONST. CO.
BOOKED 4-19-94 AS PER PLAN

