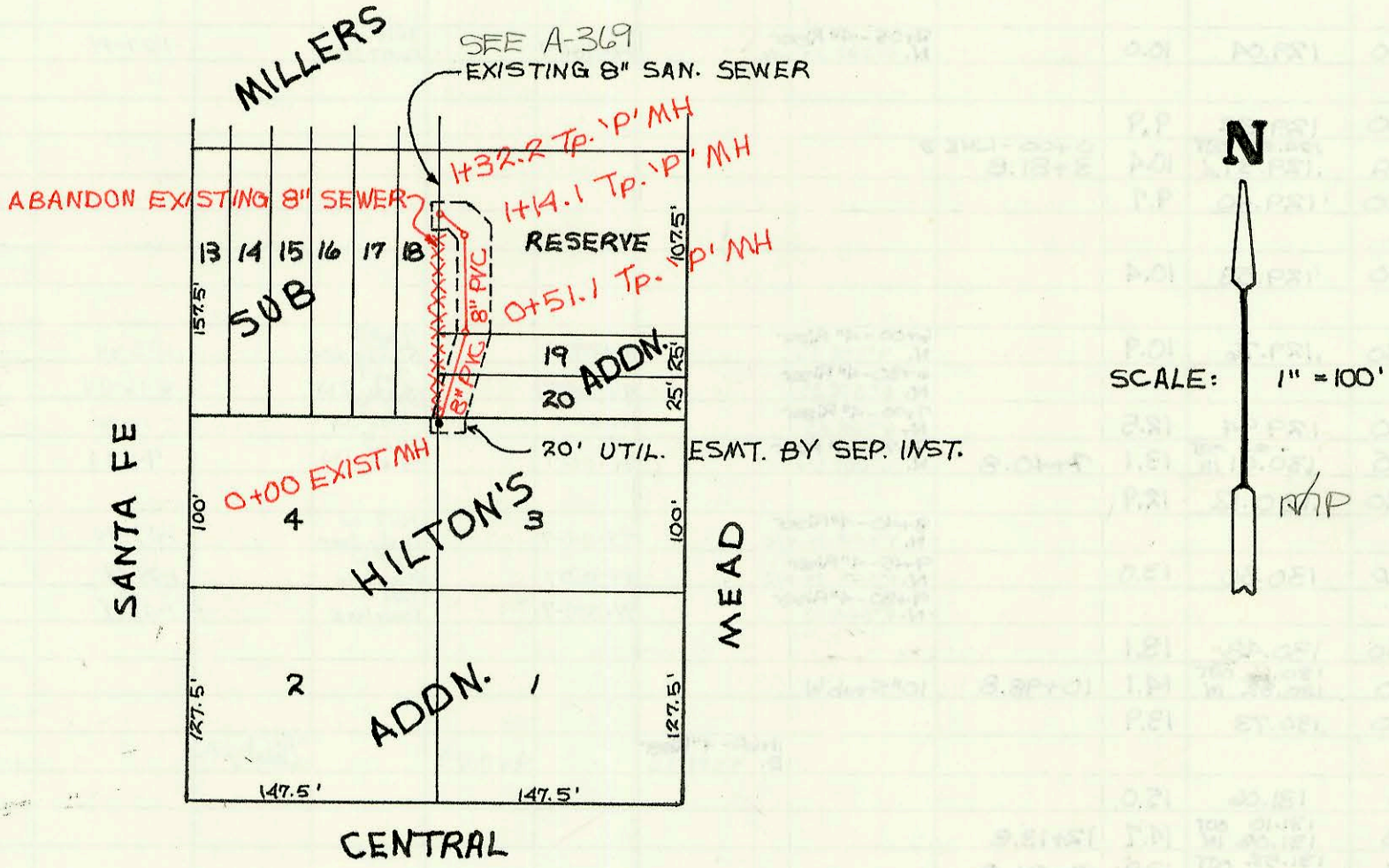
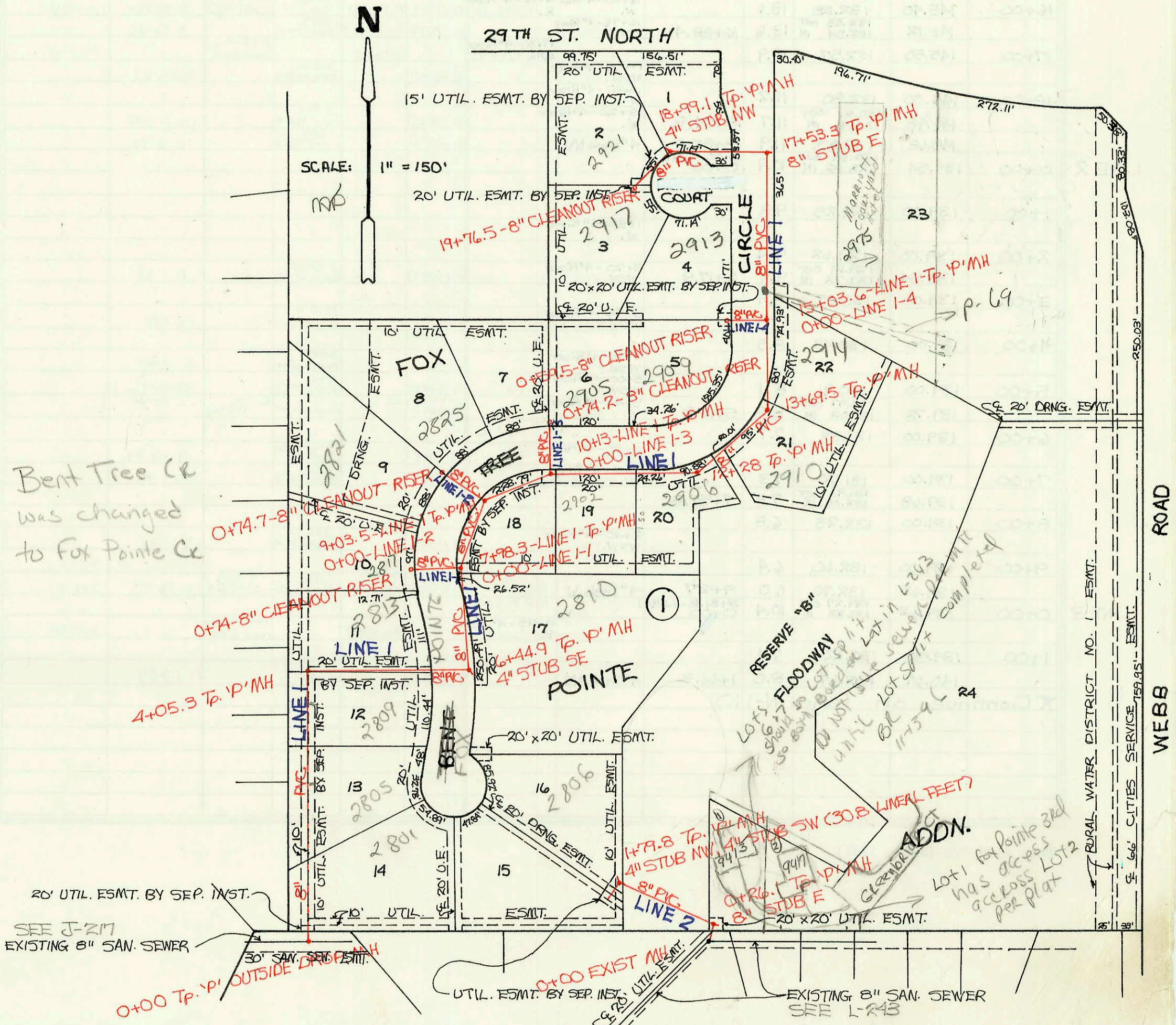


RELOCATION OF PART OF LATERAL "N"
 SUBMAIN "D", SANITARY SEWER #1
 PRIV. PROJ. NO. 446 PPS (607861)
 BUILT BY PEARSON EXCAVATING
 BOOKED 4-25-94 FROM AS BUILTS



LATERAL 100, WAR INDUSTRIES SEWER
 PROJ. NO. 468-81892 (741637)
 BUILT BY NOWAK CONSTRUCTION CO.
 BOOKED 4-29-94 FROM AS BUILTS



CONSTRUCTION RECORD						SERVICE RECORD						
STATION	ELEVATION		Depth	MANHOLE	4-INCH "Y" BRANCHES		No. of Permit		House Number		DATE OF PERMITS	
	Ground	Grade			North West	South East	North West	South East	North West	South East	North West	South East
Relocation of Part of Lateral "N", Submain "D", Sanitary Sewer #1												
0+00	114.33	106.78	7.6	0+00								
	113.53	106.83 OUT 106.93 IN	6.7	0+51.1								
1+00	114.00	107.03	7.0									
	113.51	107.06 OUT 107.11 IN	6.5	1+14.1								
	115.62	107.17	8.5	1+32.2	4" sch 40 1+24.7		94-11627		700 Center		3-14-94	
Lateral 100, War Industries Sewer												
0+00	210.81	196.12 OUT 203.76 IN		0+00				94-8797-7		2805 Bent Tee		6-7-94
1+00	211.50	204.04	7.5		4" PVC 40 1+01		94-15527-7		2801 N Bent Tee		9-23-94	
2+00	211.80	204.32	7.5		4" sch 40 2+40.3		94-8797		2805 Bent Tee		6-7-94	
3+00	212.40	204.60	7.8		4" sch 40 3+60.5		94-82007		2804 Bent Tee		6-7-94	
4+00	215.30	204.89	10.4									
	215.59	204.90 OUT 205.09 IN	10.6	4+05.3								
5+00	216.60	205.60	11.0									
6+00	218.00	206.13	11.9		4" sch 40							
	217.77	206.31 OUT 206.53 IN	11.4	6+44.9	4" Stub SE		94-534-7		2810 Bent Tee		1-11-94	
7+00	217.60	207.78	9.8									
	219.44	207.23 OUT 207.26 IN	12.2	0+00-LINE 1-1 7+98.3								
8+00	218.90	207.27	11.6									
9+00	220.00	207.67	12.3									
	220.69	207.68 OUT 207.78 IN	13.0	0+00-LINE 1-2 9+03.5								
10+00	219.70	208.04	11.7									
	219.76	208.08 OUT 208.22 IN	11.7	0+00-LINE 1-3 10+13	4" sch 40 10+34.0		96-17097-1		2902 Bent Tee	Fox Pointe	10-14-95	
11+00	218.40	208.52	9.9		4" sch 40 11+74.4		94-835-7		2906 Bent Tee	Fox Pointe	1-11-94	
12+00	217.60	208.87	8.7									
	218.42	208.97 OUT 208.97 IN	9.5	12+28								
13+00	217.50	209.36	8.1		4" sch 40 13+19.5		95-14697-7		2910 Bent Tee	Fox Pointe	9-18-95	
	218.83	209.74 OUT 209.75 IN	9.1	13+69.5								
14+00	218.40	210.04	8.4				95-2735		2911 Bent Tee	Fox Pointe	10-4-92	
15+00	219.40	210.99	8.4									
	219.48	211.02 OUT 211.12 IN	8.5	0+00-LINE 1-4 15+03.6								
16+00	220.50	212.11	8.4				94-43747		2975 N Unk R		3-11-99	
17+00	221.70	213.14	8.6									
	222.72	213.81 OUT 213.77 IN	9.0	17+53.3	8" Stub E							
18+00	222.50	213.94	8.6									
	222.97	214.21 OUT 214.45 IN	8.7	18+99.1	4" Stub NW		95-22687		2921 Bent Tee		5-19-95	
19+00	222.90	214.46	8.4									
19+76.5	223.31	214.71	8.6	Clean out 19+76.5	4" Wye	4" PVC 40 Wye	95-11137		2917 Bent Tee		1-24-95	
LINE 1-1 0+00	219.44	207.23 OUT 207.36 IN	12.2	0+00								
0+74	219.63	209.62	10.0	7+98.3-LINE 1 0+00	4" sch 40 0+69.07		95-19617		2817 Bent Tee		8-1-95	
LINE 1-2 0+00	220.69	207.68 OUT 207.81 IN	13.0	0+00								
0+74.7	220.68	211.36	9.3	9+03.5-LINE 1 0+00			98-17527	97-14927	2825 Fox Pointe	2821 Fox Pointe	4-30-88	8-27-97
LINE 1-3 0+00	219.76	208.08 OUT 208.21 IN	11.7	0+00								
0+74.2	220.05	211.28	8.8	10+13-LINE 1 0+00	5DR35 tied to Wye 72.8' No	NE MH 2001- 03007	8005 6218		2905 Fox Pointe			1-23-82
LINE 1-4 0+00	219.48	211.02 OUT 211.20 IN	8.5	0+00	4" sch 40 conn to leader		95-10749-7		2913 Fox Pointe		11-27-01	
0+59.5	219.91	211.57	8.3		4" sch 40 conn to C.O. Riser				2904 Bent Tee		7-11-95	
LINE 2 0+00	211.21	201.78 OUT 202.44 IN	9.4	0+00								
	212.93	202.59 OUT 202.75 IN	10.3	0+26.1								
1+00	209.90	203.12	6.8									
	210.04	203.51	6.5	1+79.8	4" Stub NW	4" Stub SW	74-10517		2806 Bent Tee		3-22-94	

LINE 1

LINE 1-1

LINE 1-2

LINE 1-3

LINE 1-4

LINE 2

rel