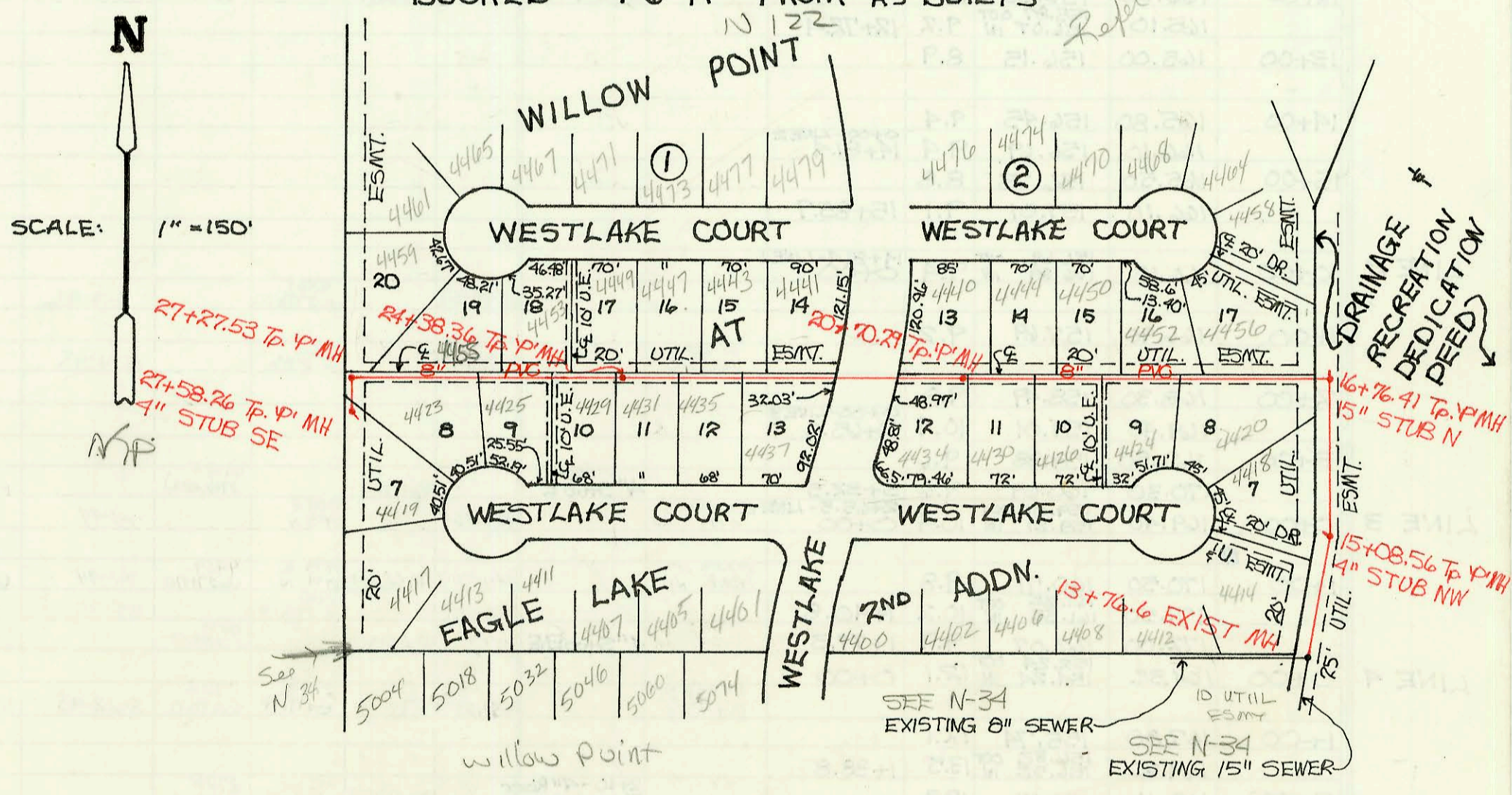
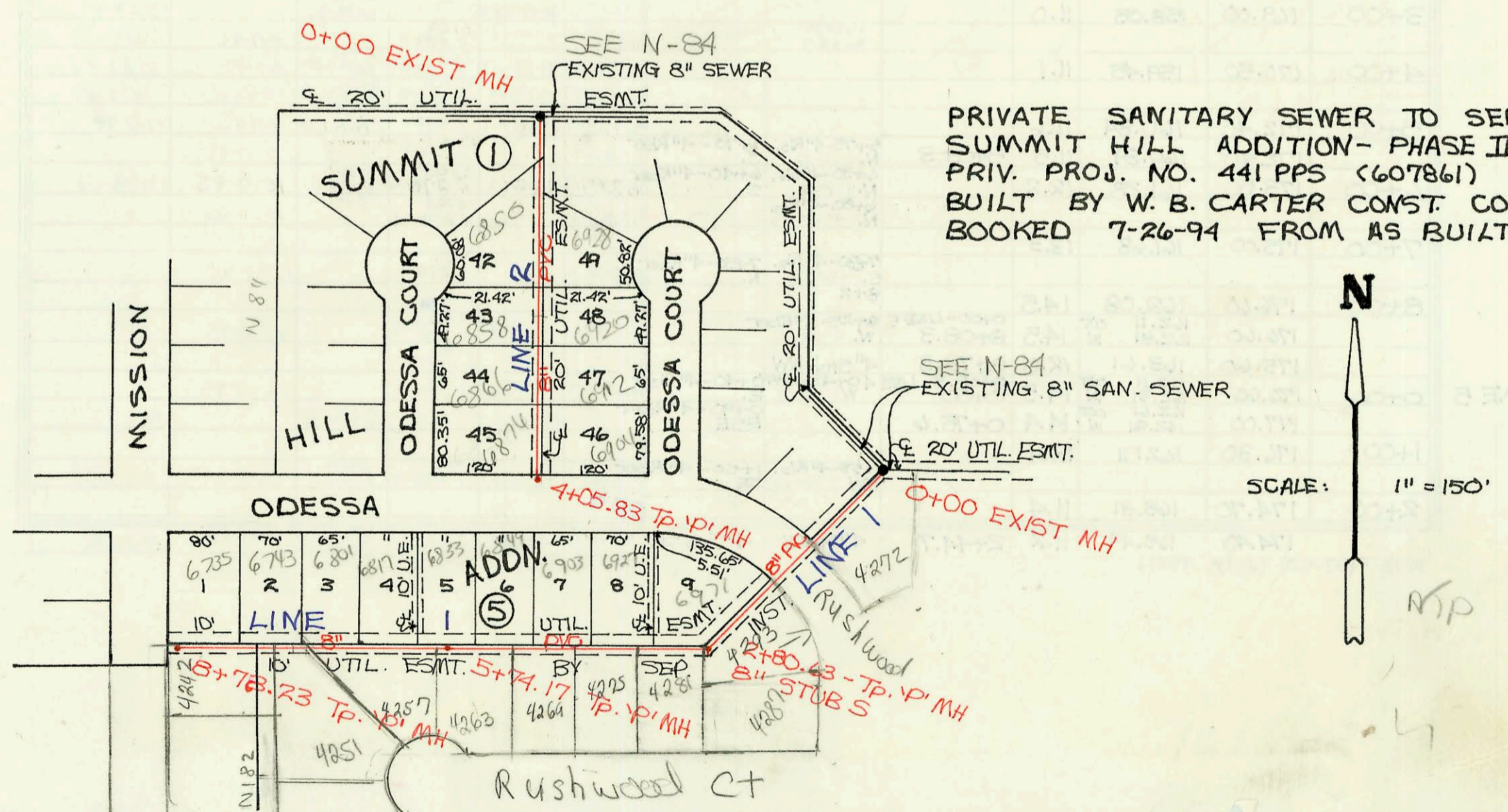


PRIVATE SANITARY SEWER EXTENSION TO SERVE LOT 4, BLOCK 1, REFLECTION RIDGE ADDITION  
 PRIV. PROJ. NO. 464PPS (607861)  
 BUILT BY DAVID LIES PLUMBING, INC.  
 BOOKED 7-5-94 FROM AS BUILTS

PRIVATE SANITARY SEWER TO SERVE WILLOW POINT AT EAGLE LAKE 2<sup>ND</sup> ADDITION  
 PRIV. PROJ. 438PPS (607861)  
 BUILT BY W. B. CARTER CONST. CO.  
 BOOKED 7-6-94 FROM AS BUILTS



PRIVATE SANITARY SEWER TO SERVE SUMMIT HILL ADDITION - PHASE III  
 PRIV. PROJ. NO. 441 PPS (607861)  
 BUILT BY W. B. CARTER CONST. CO.  
 BOOKED 7-26-94 FROM AS BUILTS



CONSTRUCTION RECORD						SERVICE RECORD							
STATION	ELEVATION		Depth	MANHOLE	4-INCH "Y" BRANCHES		No. of Permit		House Number		DATE OF PERMITS		
	Ground	Grade			North West	South East	North West	South East	North West	South East	North West	South East	
Private Sanitary Sewer To Serve Lot 4, Block 1, Reflection Ridge Commercial 2 <sup>ND</sup> Addn.													
0+00	141.49	137.54 OUT 139.54 IN	14.0	0+00									
0+48	141.00	132.91	8.1		4" SDR 35 4" Wye W		94-10477		2319 Ridge Rd		7-5-94		
Private Sanitary Sewer To Serve Willow Point At Eagle Lake 2 <sup>ND</sup> Addition													
LINE 1	13+76.6	206.95	139.31 OUT 199.55 IN	7.6	13+76.6								
	14+00	207.90	199.60	8.3									
	15+00	208.60	199.80	8.8									
		208.57	199.82 OUT 199.82 IN	8.8	15+08.56	4" Sch 40 4" Stab W		3465	4418 Westlake		2-27-98		
	16+00	209.50	200.08	9.4									
		209.25	200.30 OUT 200.15 IN	9.0	16+76.41	15" Stab N							
	17+00	212.00	202.47	9.5									
						4" PVC 40 17+48.4	4" SDR 35 17+69.41	2801	2752	4456 Westlake	4420 Westlake	3-29-95	1-9-94
	18+00	216.70	203.81	12.9									
						4" SDR 35 18+73.4	4" SDR 35 18+87.41 Tap	2800	2789	4452 Westlake	4424 Westlake	3-22-95	3-29-95
	19+00	218.50	205.15	13.4		4" Sch 40 19+39.2	4" Sch 40 19+60.3	2790	2681	4450 Westlake	4426 Westlake	3-8-95	6-28-94
						4" Sch 40 R.V.C. 20+06.29 Tap	4" Sch 40 20+26.0	2791	2690	4444 Westlake	4430 Westlake	3-8-95	6-28-94
	20+00	219.50	206.50	13.0									
		220.34	207.44 OUT 207.44 IN	12.9	20+70.29	4" SDR 35 20+81.7	4" SDR 35 20+55.79	2696	02695	4440 Westlake	4434 Westlake	7-7-94	3-9-94
	21+00	221.20	207.82	13.4									
	22+00	223.40	209.09	14.3		4" Sch 40 22+30.3	4" SDR 35 22+70.0	2815	2844	4441 Westlake	4427 Westlake	5-12-95	6-9-95
	23+00	223.70	210.36	13.3		4" Sch 40 23+30.92	4" SDR 35 23+35.3	2816	2796	4443 Westlake	4435 Westlake	5-12-95	3-29-95
	24+00	224.50	211.63	12.9		4" SDR 35 23+68.5	4" SDR 35 24+24.8	2865	2714	4447 Westlake	4431 Westlake	7-25-95	
		224.52	212.12	12.4	24+38.36	4" Sch 40 24+50.3	4" Sch 40 24+50.3	2759		4449 Westlake	4425 Westlake	12-5-94	
	25+00	224.30	212.38	11.9		4" SDR 35 25+27.9	4" Sch 40 25+55.14	2866	2845	4453 Westlake	4425 Westlake	7-25-95	6-13-95
	26+00	224.00	212.80	11.2		4" SDR 35 26+36.5	4" Sch 40 26+20.5	2799	2838	4455 Westlake	4423 Westlake	3-22-95	4-5-95
	27+00	222.50	213.21	9.3									
		222.63	213.38 OUT 213.38 IN	9.3	27+27.53	4" Sch 40 27+18.9	4" SDR 35 27+35.5	3153		4459 Westlake	4419 Westlake	6-27-97	
		222.17	213.42	8.8	27+58.26	4" SDR 35 27+58.26	4" Stab SE	2895		4419 Westlake		9-28-95	
Private Sanitary Sewer To Serve Summit Hill Addition-Phase III													
LINE 1	0+00	189.80	181.30 OUT 181.30 IN	8.5	0+00								
	1+00	192.00	181.63	10.4									
	2+00	192.50	181.96	10.5									
		191.73	182.23 OUT 182.41 IN	9.5	2+80.63	4" SDR 35 2+99.6	4" ABS 2+38.6	2856	2919	6911 Odessa	4293 Rushwood	7-14-95	11-27-95
	3+00	192.70	182.48	10.2		4" PVC 40 3+71.6	4" Sch 40 3+28.6	2777	2993	6921 Odessa	4281 Rushwood	4-15-96	4-15-96
	4+00	192.50	182.87	9.6									
						4" ABS 40 4+29 Tap	4" SDR 35 4+59.6	2793	2976	6903 Odessa	4269 Rushwood	3-20-95	4-15-96
	5+00	193.50	183.25	10.3		4" Sch 40 4+99.1	4" Sch 40 5+22.4	2880	3028	6844 Odessa	4263 Rushwood	9-12-95	7-25-95
		194.39	183.54 OUT 183.67 IN	10.9	5+74.17	4" SDR 35 5+61.1	4" Sch 40 6+25.2	2767		6833 Odessa		12-16-94	
	6+00	195.20	183.73	11.5		4" SDR 35 6+37.2	4" Sch 40 6+25.2	2813	3027	6817 Odessa	4257 Rushwood	5-9-95	9-25-95
	7+00	196.20	184.18	12.0		4" ABS 40 7+10.17 Tap	4" Sch 40 7+16.2	2774	3004	6851 Odessa	4251 Rushwood	3-20-95	6-14-96
						4" SDR 35 7+60.2		2728		6713 Odessa		8-5-94	
	8+00	196.40	184.62	11.8									
		196.55	184.97	11.6	8+78.23	4" SDR 35 8+43.23	4" SDR 35 8+53.2	2772	3006	6735 Odessa	4242 Mission	1-31-95	11-14-96
LINE 2	0+00	193.90	184.60 OUT 184.65 IN	9.3	0+00								
	1+00	194.50	185.02	9.5		4" ABS 1+67.8	4" PVC 40 1+67.0	2869	2779	6850 Odessa	6928 Odessa	8-1-95	2-21-95
	2+00	194.50	185.40	9.1		4" ABS Sch 40 2+17.8	4" ABS 2+23.8	2710	2868	6858 Odessa	6720 Odessa	8-4-94	8-1-95
						4" SDR 35 2+90.8	4" Sch 40 2+99.8	2729	2781	6866 Odessa	6912 Odessa	8-5-94	3-1-95
	3+00	196.00	185.77	10.2									
						4" SDR 35 3+67.8	4" PVC 40 3+74.8	2731	2757	6874 Odessa	6904 E. Odessa C.T.	9-2-94	11-28-94
	4+00	196.00	186.15	9.9									
		195.94	186.17	9.8	4+05.83			2731		6874 Odessa		9-2-94	

Form #192-020 (July, 1981) 6903 Odessa (Note Augusta Hwy - 1-45° ell at house within 2' of found a 3-45° ell between main & sewer