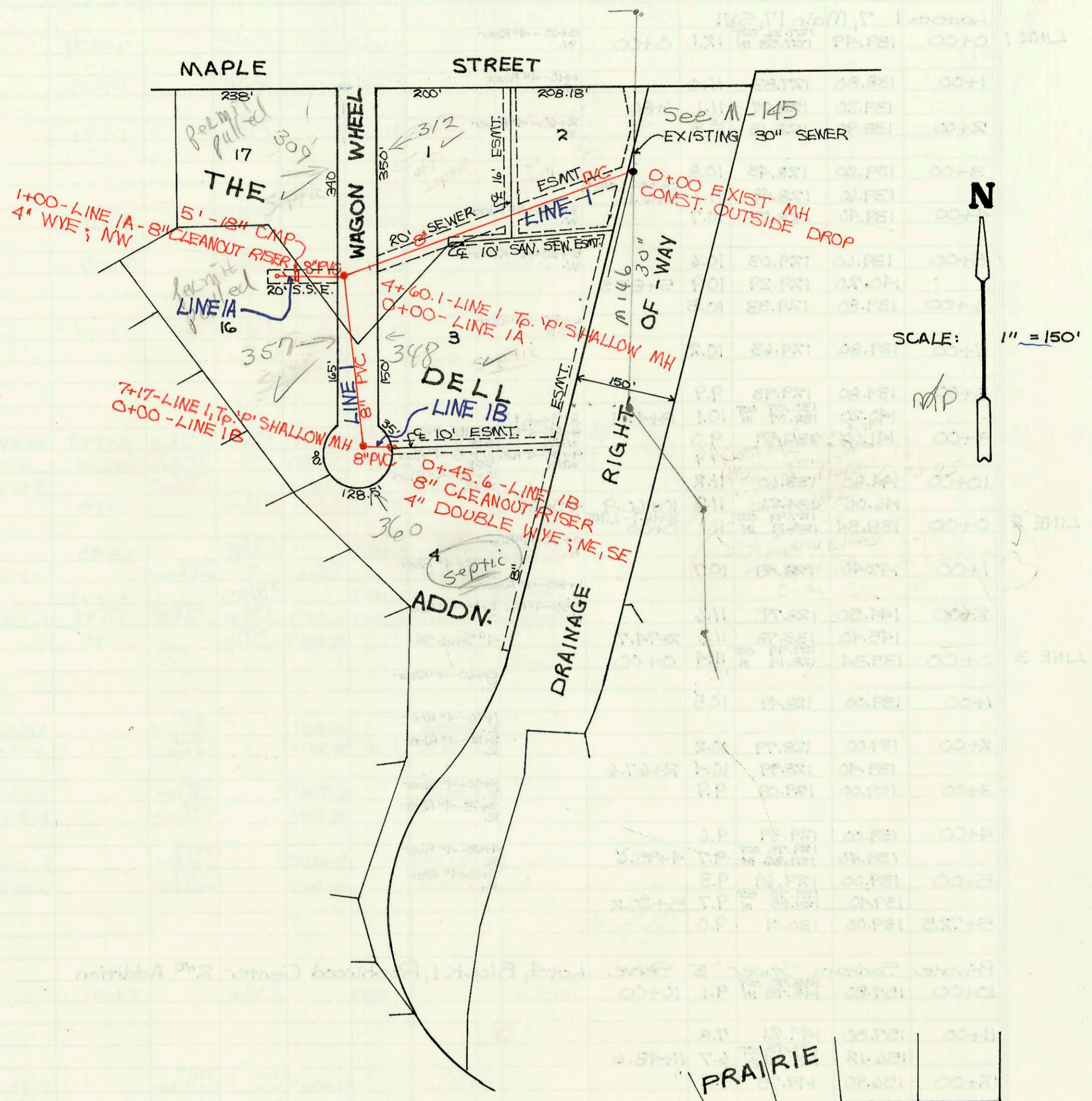
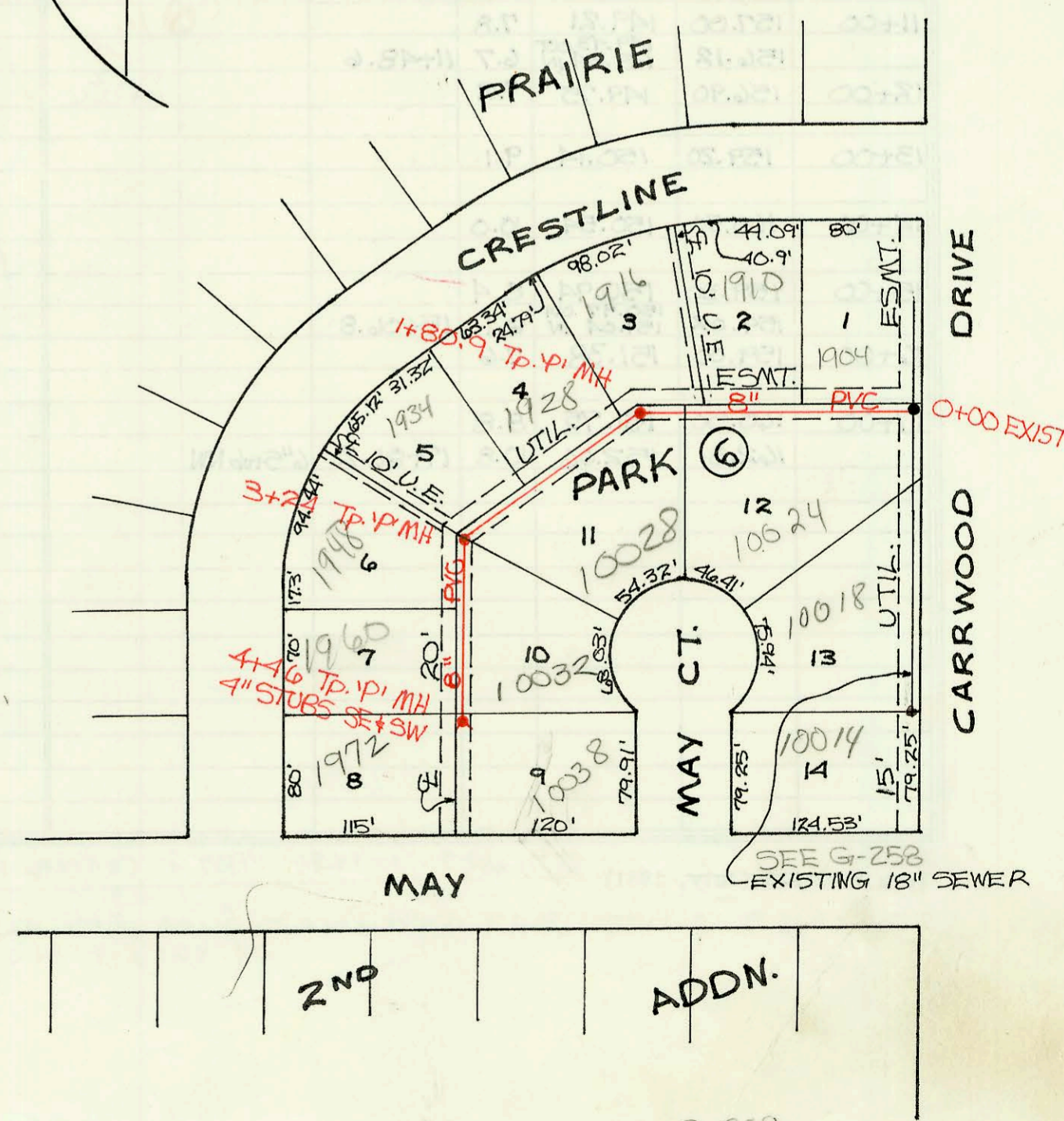
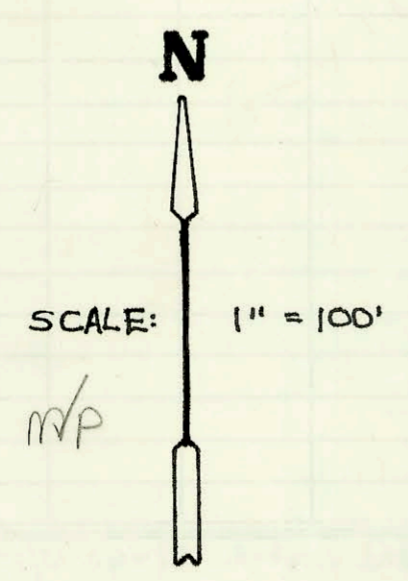


LATERAL 332, SWI  
PROJ. NO. 468-82372 (741793)  
BUILT BY HOPPER CONST. CO.  
BOOKED 8-22-94 FROM AS BUILTS



LATERAL 5, MAIN II, SWI  
PROJ. NO. 468-81107 (741785)  
BUILT BY MIES CONST. CO.  
BOOKED 9-1-94 AS PER PLAN



See G-259

CONSTRUCTION RECORD						SERVICE RECORD							
STATION	ELEVATION		Depth	MANHOLE	4-INCH "Y" BRANCHES		No. of Permit		House Number		DATE OF PERMITS		
	Ground	Grade			North West	South East	North West	South East	North West	South East	North West	South East	
Lateral 332, SW1				0+00									
0+00	122.80	109.93 OUT 119.66 IN	12.9					7655401				4-22-96	
1+00	129.00	119.30	9.7										
2+00	124.40	119.60	4.8					94-11035-7	312 S wagon wheel			8-2-94	
3+00	123.30	119.90	3.4										
4+00	128.70	120.20	8.5										
	125.36	120.38 OUT 120.48 IN	5.0	0+00-LINE 1A 4+60.1				7655007		348 S wagon wheel		4-22-96	
5+00	126.10	120.60	5.5										
6+00	126.60	120.90	5.7										
7+00	126.90	121.20	5.7										
	127.45	121.25	6.0	0+00-LINE 1B 7+17									
0+00	125.36	120.38 OUT 120.38 IN	5.0		4" SCH 40 0+40.6			95-10087-7	95-10027-7	309 S wagon wheel	357 S wagon wheel	6-30-95	6-30-95
1+00	123.20	120.67	2.5										
0+00	127.45	121.25 OUT 121.35 IN	6.2	7+17-LINE 1 0+00									
0+45.6	126.66	121.47	5.2	0+45.6 <sup>CO</sup>									
Lateral 5, Main 11, SW1				0+00									
0+00	127.80	111.33 OUT 116.33 IN	16.5		4" SDR35 0+32			94-14412-7		1904 S crestline st		9-2-94	
1+00	130.00	118.07	11.9		4" SDR35 0+89.0	4" SDR35 0+89.0		95-9954-7	95-8230-7	1910 crestline	10524 w May Ct	6-30-95	6-6-95
1+00	130.20	119.48 OUT 119.58 IN	10.7	1+80	4" SDR35 1+67.3			95-9956-7		1916 crestline		6-30-95	
2+00	130.00	119.65	10.4		4" SDR35 2+34.9	4" SDR35 2+47.4		95-16451-7	95-72-7	1928 crestline	10528 May Ct	10-16-95	12-19-94
2+00	130.00	119.65	10.4		4" SDR35 2+96.5			95-8331-7		1934 crestline		6-6-95	
3+00	129.90	120.06	9.8		4" P.V.C. 40 3+49.5			94-2092-7		1948 S crestline		12-20-94	
3+00	130.00	120.16 OUT 120.26 IN	9.8	3+24	4" SDR35 4+17	4" SDR35 4+12		95-882-7	95-5067-7	1960 crestline	10532 w May Ct	1-20-95	4-10-95
4+00	129.60	120.57	9.0		4" PVC 40 M/C 4" Stub SW	4" SDR35 4" Stub SE		94-2097-7	95-1431-7	1972 S crestline	10538 May Ct	12-20-94	2-1-95
4+00	129.50	120.75	8.8	4+46									

LINE 1A

LINE 1B