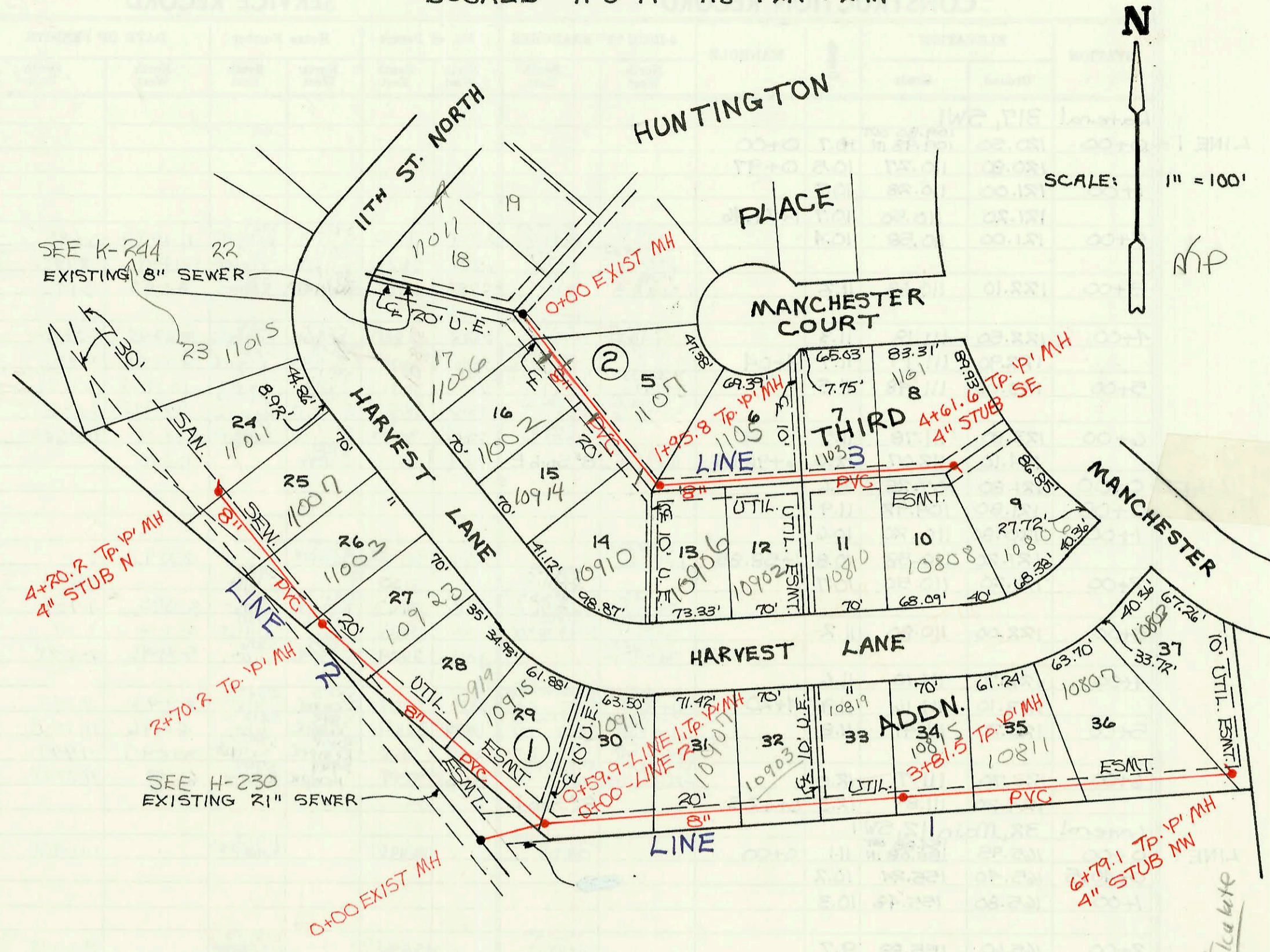
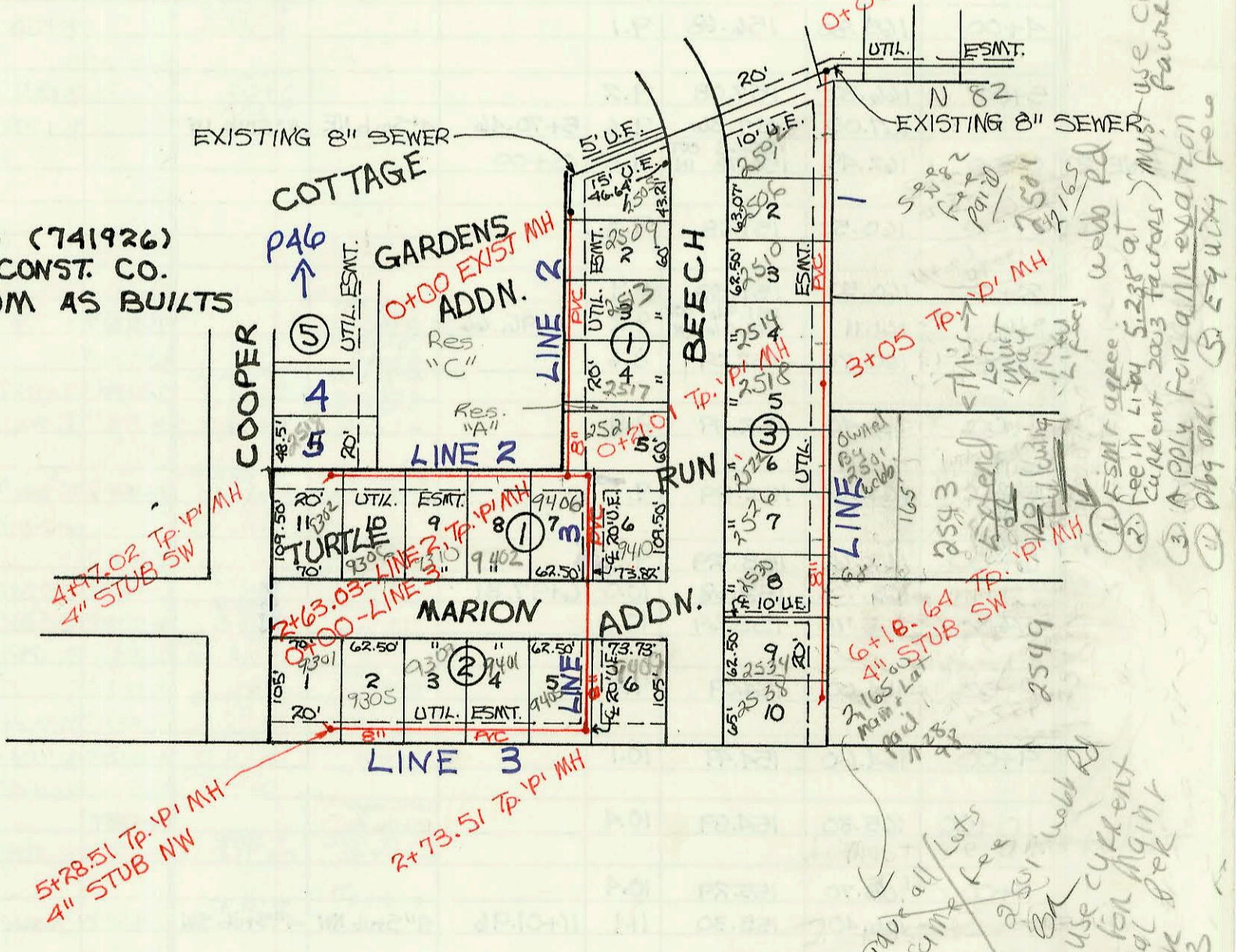
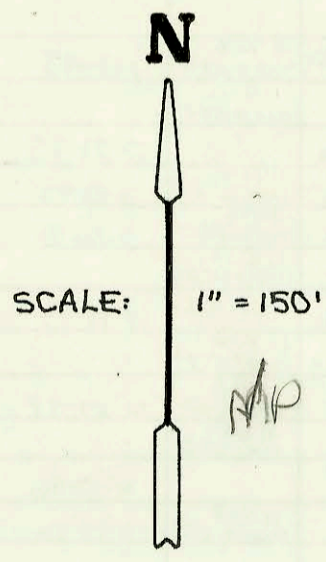


LATERAL 261, SWI
PROJ. NO. 468-81715 (741934)
BUILT BY NOWAK CONST. CO.
BOOKED 11-3-94 AS PER PLAN



LATERAL 121, WIS
PROJ. NO. 468-82330 (741926)
BUILT BY WILDCAT CONST. CO.
BOOKED 11-4-94 FROM AS BUILTS



use current plans to calculate
 1) ESMNT agree
 2) see in line 523 at
 current 2003 factors) MH
 3) apply for a 10' exaction
 4) apply for a 10' exaction
 5) apply for a 10' exaction
 6) apply for a 10' exaction
 7) apply for a 10' exaction
 8) apply for a 10' exaction
 9) apply for a 10' exaction
 10) apply for a 10' exaction
 11) apply for a 10' exaction
 12) apply for a 10' exaction
 13) apply for a 10' exaction
 14) apply for a 10' exaction
 15) apply for a 10' exaction
 16) apply for a 10' exaction
 17) apply for a 10' exaction
 18) apply for a 10' exaction
 19) apply for a 10' exaction
 20) apply for a 10' exaction
 21) apply for a 10' exaction
 22) apply for a 10' exaction
 23) apply for a 10' exaction
 24) apply for a 10' exaction
 25) apply for a 10' exaction
 26) apply for a 10' exaction
 27) apply for a 10' exaction
 28) apply for a 10' exaction
 29) apply for a 10' exaction
 30) apply for a 10' exaction
 31) apply for a 10' exaction
 32) apply for a 10' exaction
 33) apply for a 10' exaction
 34) apply for a 10' exaction
 35) apply for a 10' exaction
 36) apply for a 10' exaction
 37) apply for a 10' exaction
 38) apply for a 10' exaction
 39) apply for a 10' exaction
 40) apply for a 10' exaction
 41) apply for a 10' exaction
 42) apply for a 10' exaction
 43) apply for a 10' exaction
 44) apply for a 10' exaction
 45) apply for a 10' exaction
 46) apply for a 10' exaction
 47) apply for a 10' exaction
 48) apply for a 10' exaction
 49) apply for a 10' exaction
 50) apply for a 10' exaction
 51) apply for a 10' exaction
 52) apply for a 10' exaction
 53) apply for a 10' exaction
 54) apply for a 10' exaction
 55) apply for a 10' exaction
 56) apply for a 10' exaction
 57) apply for a 10' exaction
 58) apply for a 10' exaction
 59) apply for a 10' exaction
 60) apply for a 10' exaction
 61) apply for a 10' exaction
 62) apply for a 10' exaction
 63) apply for a 10' exaction
 64) apply for a 10' exaction
 65) apply for a 10' exaction
 66) apply for a 10' exaction
 67) apply for a 10' exaction
 68) apply for a 10' exaction
 69) apply for a 10' exaction
 70) apply for a 10' exaction
 71) apply for a 10' exaction
 72) apply for a 10' exaction
 73) apply for a 10' exaction
 74) apply for a 10' exaction
 75) apply for a 10' exaction
 76) apply for a 10' exaction
 77) apply for a 10' exaction
 78) apply for a 10' exaction
 79) apply for a 10' exaction
 80) apply for a 10' exaction
 81) apply for a 10' exaction
 82) apply for a 10' exaction
 83) apply for a 10' exaction
 84) apply for a 10' exaction
 85) apply for a 10' exaction
 86) apply for a 10' exaction
 87) apply for a 10' exaction
 88) apply for a 10' exaction
 89) apply for a 10' exaction
 90) apply for a 10' exaction
 91) apply for a 10' exaction
 92) apply for a 10' exaction
 93) apply for a 10' exaction
 94) apply for a 10' exaction
 95) apply for a 10' exaction
 96) apply for a 10' exaction
 97) apply for a 10' exaction
 98) apply for a 10' exaction
 99) apply for a 10' exaction
 100) apply for a 10' exaction

CONSTRUCTION RECORD

SERVICE RECORD

LINE 1

LINE 2

LINE 3

LINE 1

LINE 2

LINE 3

STATION	ELEVATION		Depth	MANHOLE	4-INCH "Y" BRANCHES		No. of Permit		House Number		DATE OF PERMITS	
	Ground	Grade			North West	South East	North West	South East	North West	South East	North West	South East
Lateral	261	SW										
0+00	141.70	132.15 OUT 134.15 IN	9.6	0+00								
	144.30	136.50 OUT 137.00 IN	7.8	0+00-LINE 2 0+59.9								
1+00	144.80	137.77	7.0		4" SDR 35 1+00.9		95-5281-7		10911 Harvest		4-11-95	
2+00	146.50	139.70	6.8		4" SDR 35 2+19.4 4" SDR 35 2+71.5		95-18291-7		10901 Harvest		11-3-95	
3+00	148.40	141.63	6.8		4" SDR 35 3+26.5 top		96-0987		10903 Harvest		1-13-96	
	150.10	143.20 OUT 143.30 IN	6.9	3+81.5	4" sch 40 3+26.5		96-3104-7		10819 Harvest		3-6-96	
4+00	150.20	143.45	6.8		4" sch 40 4+13.5		95-2095-7		10815 Harvest		2-5-95	
5+00	152.20	144.28	7.9		4" sch 40 5+09.5		95-6169-7		10811 Harvest		4-26-95	
6+00	153.50	145.10	8.4		4" SDR 35 5+97.1		95-9410-7		10801 Harvest		6-19-95	
	154.50	145.75	8.8	6+79.1	4" Stub NW		96-1766-7		10803 Harvest		10-4-96	
0+00	144.30	136.50 OUT 137.00 IN	7.8	0+00	4" SDR 35 0+90.5		95-18042-7		10915 Harvest		10-30-95	
1+00	144.30	137.74	6.6		4" SDR 35 1+48.0		95-868-7		10914 Harvest		1-20-95	
2+00	144.50	138.48	6.0		4" SDR 35 2+22.6 4" SDR 35 2+89.2		95-16267		10923 Harvest		5-22-95	
	145.00	139.00 OUT 140.00 IN	6.0	2+70.2	4" SDR 35 2+89.2		95-52967		11003 Harvest		4-11-95	
3+00	144.90	140.30	4.6		4" SDR 35 3+86.6		95-5408-7		11007 Harvest		4-7-95	
4+00	145.30	141.30	4.0		4" SDR 35		95-52977		11011 Harvest		4-11-95	
0+00	145.70	139.10 OUT 139.15 IN	15.9	0+00	4" Stub N Tap 4" SDR 40 0+68.0		96-9947		11006 Harvest		6-26-96	
1+00	152.50	140.48	12.0		4" sch 40 1+10.0 Riser 146.20		96-1621-7		11002 Harvest		9-27-96	4-11-95
	149.50	141.75 OUT 141.85 IN	7.8	1+95.8	4" SDR 35 1+75.0 Riser 145.80		95-2070-7		11007 Manchester		2-13-95	
2+00	149.50	141.90	7.6		4" sch 40 1+76.8 Tap 4" sch 40 2+100.8		96-9931-7		10910 Harvest	10906 Harvest	6-14-96	11-8-96
3+00	151.40	143.18	8.2		4" sch 40 3+43.6		95-25071		11057 Manchester		12-22-95	
4+00	153.50	144.46	9.0		4" sch 40 4+15.6		95-807-7		1103 Manchester	10402 Harvest	4-24-96	12-2-95
	154.90	145.25	9.7	4+61.6	4" sch 40 4+38.6 4" Stub SE		96-9948-7		11011 Manchester	10802 Harvest	6-14-96	1-18-96
Lateral	121	W 15										
0+00	202.60	191.30 OUT 191.40 IN	11.3	0+00	4" SDR 35 0+62.0		95-692-7		2502 Beech		5-9-95	
1+00	203.20	191.80	11.4		4" SDR 35 1+62.0		95-6930-7		2506 Beech		5-9-95	
2+00	203.60	192.20	11.4		4" SDR 35 1+92.0		96-2847-7		2510 Beech		8-29-96	
3+00	203.80	190.60	13.2		4" SDR 35 2+65.0		96-8036-7		2514 Beech		5-23-96	
	203.83	192.62	11.2	3+05	4" sch 40 3+71.0		96-12552-7		2518 Beech		7-25-96	
4+00	204.00	193.00	11.0		4" sch 40 4+88.6		96-15613-7		2522 Beech		9-17-96	
5+00	204.00	193.40	10.6		4" SDR 35 5+06.4		96-15611-7		2524 Beech		9-17-96	
6+00	203.90	193.80	10.1		4" sch 40 5+60.6		95-20587-7		2530 Beech		3-18-96	
	203.92	193.87	10.1	6+18.64	4" sch 40 5+18.6 (Tap 20' N of MH)		96-16219-7		2534 Beech		12-14-95	
0+00	200.40	189.85	10.6	0+00	4" Stub SW		96-12562-7		2538 Beech		7-25-96	
1+00	201.30	190.25	11.1		4" SDR 35 0+31.6		96-16167		2507 Beech		1-12-96	
2+00	202.20	190.65	11.6		4" SDR 35 1+19.0		95-6931-7		2513 Beech		5-9-95	
	202.73	190.90 OUT 191.00 IN	11.8	0+00-LINE 3 2+63.03	4" SDR 35 1+57.5		96-8449-7		2517 Beech		1-21-97	
3+00	202.50	191.25	11.3		4" SDR 35 2+46.0		95-10767-7		2521 Beech		7-14-95	
4+00	202.00	191.55	10.5		4" SDR 35 3+34.0		95-13621-7		9402 MARION		8-25-95	
	201.44	191.94	9.5	4+97.02	4" SDR 35 4+02.0		95-9994-7		9310 MARION		6-30-95	
0+00	202.73	190.90 OUT 191.10 IN	11.8	2+63.03-LINE 2 0+00	4" SDR 35 4+53.4		96-3343-7		9306 MARION		3-12-96	
	203.00	191.18 OUT 191.28 W	11.8	0+21.01	4" SDR 35 4+67.02		2000-01961		2518 S COOPER	9302 MARION	9-1-00	10-2-96
1+00	203.40	191.60	11.8		4" SDR 35 0+62.0		95-9097-7		9410 MARION		11-13-95	
2+00	203.10	192.00	11.1		4" SDR 35 2+58.5		95-13620-7		9409 MARION		5-22-97	8-25-95
	203.40	192.27 OUT 192.39 IN	11.1	2+73.51	4" sch 40 3+55.5		97-2768-7		9405 MARION		12-8-97	
3+00	203.30	192.50	10.8		4" SDR 35 4+08.5		97-1114-7		9401 MARION		5-3-97	
4+00	202.90	192.90	10.0		4" SDR 35 4+81.5		97-452-7		9309 MARION		1-13-97	
5+00	202.50	193.30	9.2		4" SDR 35		95-19067		9305 MARION		11-13-95	
	202.38	193.41	9.0	5+28.51	4" Stub NW		96-20243-7		9301 MARION		12-4-96	

95-2090-7 2-13-95 10914 w. Harvest - JWP indicates Tap. 4" sch 40 PVC (Tap 57.9 1+10.8)
85' N of MH 1195.8 instead of using RISER

95-8257-7 2-10-95 11003 N Manchester