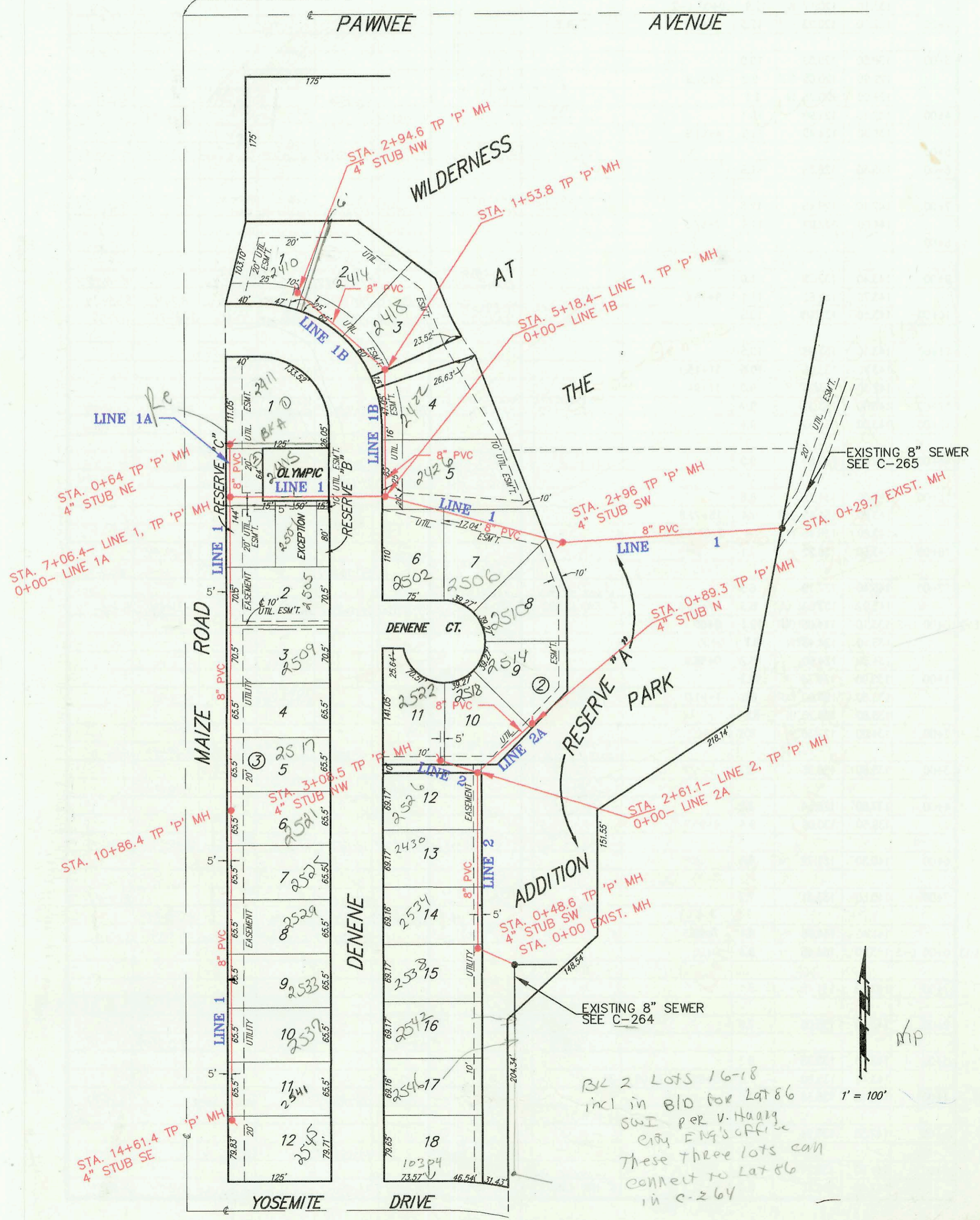


LATERAL 327, SOUTHWEST INTERCEPTOR SEWER  
PROJECT NO. 468-82352 (741975)  
BUILT BY NOWAK CONSTRUCTION CO.  
BOOKED 11-10-94 AS PER PLAN

N.W. COR. SEC. 5, TWP. 28-S, R-1-W



BLK 2 LOTS 16-18  
incl in BID for Lot 86  
SWI per V. Haazg  
City Eng's office  
These three lots can  
connect to Lot 86  
in C-264

1" = 100'

CONSTRUCTION RECORD							SERVICE RECORD					
STATION	ELEVATION		DEPTH	MANHOLE	4-INCH "Y" BRANCHES		No. of Permit		House Number		DATE OF PERMITS	
	GROUND	GRADE			North West	South East	North West	South East	North West	South East	North West	South East
LATERAL	327, SWI											
LINE 1	0+00	130.80	122.87 OUT	7.9	0+00							
		130.80	123.36 IN	7.4								
	1+00	131.90	123.65	8.2								
2+00		133.40	124.05	9.3								
		134.60	124.43 OUT	10.2	2+96	4" SDR35 4" STUB SW	75-200297		2510 S. Denene		12-4-95	
		134.60	124.53 IN	10.1								
	3+00	134.60	124.55	10.1								
4+00		137.00	124.95	12.1								
						3+92.4 4" SCH 40		96-180737	2506 Denene		10-22-96	
5+00		138.00	125.35	12.7								
		137.80	125.42 OUT	12.4	5+18.4-LINE 1							
		137.80	125.52 IN	12.3	0+00-LINE 1B							
	6+00	137.70	128.55	9.1								
7+00		139.10	130.55	8.6								
		139.10	130.68 OUT	8.4	7+06.4-LINE 1							
		139.10	130.78 IN	8.3	0+00-LINE 1A			97-21017	2501 Denene		11-24-97	
8+00		139.50	131.15	8.4				95-107777	2505 Denene		7-14-95	
						4" SDR35 2+07.4 4" SCH 40 8+83.4		99-01440	2504 Denene		12-13-99	
		140.00	131.55	8.4				199-04229	2517 Denene		7-20-99	
10+00		140.20	131.95	8.3								
		140.30	132.30 OUT	8.0	10+86.4			97-01008	2511 Denene		10-25-99	
		140.30	132.30 IN	8.0				97-38987	2525 Denene		3-3-99	
	11+00	140.30	132.35	7.9				98-131267	2529 Denene		7-14-98	
	12+00	140.90	132.75	8.1								
13+00		141.60	133.15	8.5								
						4" SDR35 12+88.6		95-201867	2533 Denene		12-4-95	
		142.70	133.55	9.1				199-00382	2537 Denene		8-10-99	
14+00		143.60	133.80	9.8	14+61.4	4" STUB SE		2500- 00641	2541 Denene		3-10-00	
								99-1007	2545 Denene		10-25-99	
LINE 1A	0+00	139.10	130.68 OUT	8.4	0+00							
		139.10	130.88 IN	8.2	7+06.4-LINE 1			97-210187	2415 Denene		11-24-97	
		138.70	131.14	7.6	0+64	4" STUB NE		97-	2411 S. Denene		6-18-97	
LINE 1B	0+00	137.80	125.42 OUT	12.4	0+00							
		137.80	125.52 IN	12.3	5+18.4-LINE 1			96-139417	2426 Denene		8-14-96	
1+00		137.50	125.92	11.6								
		137.90	126.14 OUT	11.8	1+53.8			97-	2422 Denene		6-18-97	6-18-97
		137.90	126.24 IN	11.7				98-51647	2418 Denene		4-2-98	
2+00		137.50	126.43	11.1				98-110247	2414 Denene		6-19-98	
		138.30	126.80	11.5	2+94.6	4" STUB NW		98-116237	2410 Denene		6-19-98	
		137.80	128.18 OUT	9.6	0+00							
LINE 2		137.80	128.63 IN	9.2								
		137.90	128.82 OUT	9.1	0+48.6	4" SDR35 4" STUB SW		95-106577	2538 Denene		2-10-95	
		137.90	128.92 IN	9.0								
1+00		137.60	129.13	8.5								
						4" SDR35 1+02.4		96-121967	2534 Denene		7-19-96	
								98-287467	2530 Denene		10-21-98	
2+00		137.00	129.53	7.5								
		136.60	129.77 OUT	6.8	2+61.1							
		136.60	129.87 IN	6.7	0+00-LINE 2A			95-155557	2526 Denene		7-27-95	
	3+00	137.70	130.03	7.7								
		137.90	130.39	7.5	3+08.5	4" SDR35 4" STUB NW		96-78467	2522 Denene Ct		5-17-96	
LINE 2A	0+00	136.60	129.77 OUT	6.8	0+00							
		136.60	129.87 IN	6.7				98-51707	2518 Denene Ct		4-2-98	
		135.80	130.23	5.6	0+89.3	4" STUB N		97-156307	2514 Denene Ct		9-2-97	