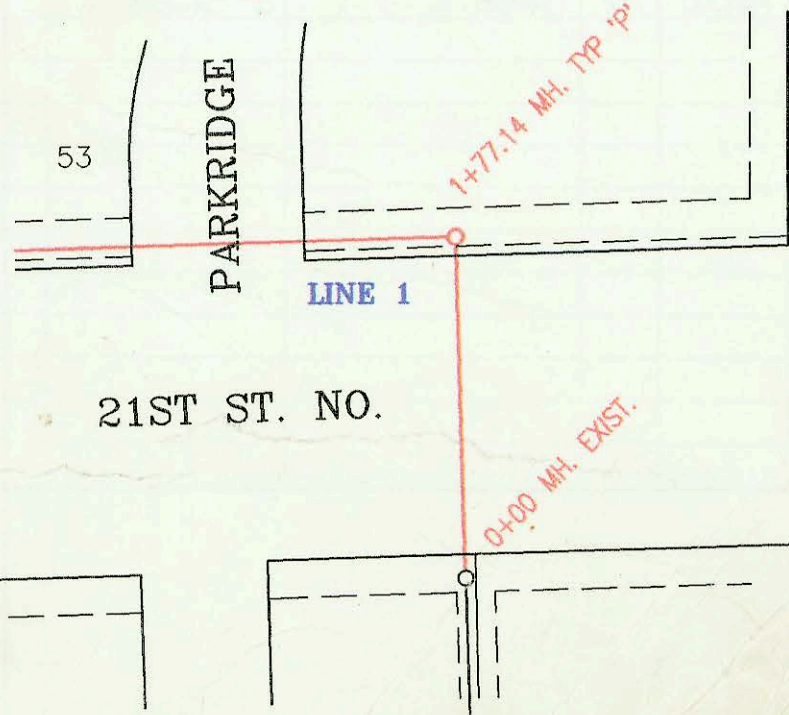


LATERAL 333, SOUTHWEST INTERCEPTOR SEWER
 PROJECT NO. 468-82382 (741900)
 BUILT BY WILDCAT CONSTRUCTION CO.
 BOOKED 11/29/94 PER PLAN



CONSTRUCTION RECORD						SERVICE RECORD						
STATION	ELEVATION		DEPTH	MANHOLE	4-INCH "Y" BRANCHES		No. of Permit		House Number		DATE OF PERMITS	
	GROUND	GRADE			North West	South East	North West	South East	North West	South East	North West	South East
L-1	LAT 333, SW											
0+00	163.00	147.84	15.2	0+00 EXIST								
1+00	165.90	148.14	17.8									
	165.50	148.37 out	17.1	1+77.14		8" SUB E						
	165.50	148.47 in	17.0									
2+00	165.80	148.54	17.3									
3+00	167.10	148.84	18.3									
4+00	167.40	149.14	18.3		4" SDR 35 4+07 4" N 162.5		96-868-7		2201 Parkridge Ct		1-25-96	
5+00	166.50	149.44	17.1									
	165.30	149.68	15.6	5+79.0								
	165.30	149.78	15.5									
6+00	165.20	149.84	15.4									
7+00	165.50	150.14	15.4		4" SDR 35 6+55 4" E 160.5		96-5341-7		2205 Parkridge Ct		4-18-96	
8+00	165.80	150.44	15.4									
	166.80	150.75	16.1	9+01.81								
	166.80	158.58 in	8.2	0+00 L-2								
10+00	166.80	151.05	15.8									
	167.30	151.12	16.2	10+24.15								
	167.30	161.18 in	6.1	0+00 L-3		4" SDR 35 10+55 4" E 161.0		95-5614-7		2209 Parkridge Ct		4-19-95
11+00	167.50	151.35	16.1									
	168.10	151.51 out	16.6	11+54.62								
	168.10	151.61 in	16.5		4" SDR 35 11+60 4" NW 162.0		96-302-7		2303 Parkridge Ct		3-14-96	
12+00	167.50	151.75	15.8									
					4" sch 40 12+20 4" NW 163.5	4" SDR 35 12+10 4" SE 161.5	95-1222-7	96-4770-7	2201 Parkridge Ct	2203 Parkridge Ct	11-14-95	4-8-96
13+00	168.30	152.05	16.3									
	169.00	152.14 out	16.9	13+30.65								
	169.00	152.24 in	16.8									
14+00	169.00	152.45	16.6									
	169.30	152.17	17.1	14+40.15								
	169.30	158.45	10.9	0+00 L-4								
15+00	169.00	152.75	16.3									
					4" SDR 35 15+65 4" NE 163.5		95-2322-7		2230 Parkridge Ct		6-6-95	
16+00	169.40	153.05	16.3									
	169.70	153.08 out	16.6	16+10.66								
	169.70	153.18 in	16.5									
	169.70	161.15 in	8.6	0+00 L-6								
17+00	169.30	153.45	15.9		4" SDR 35 17+10 4" E 165.0		96-2347-7		2332 Parkridge Ct		2-21-96	
	169.50	153.63 out	15.9	17+60.26								
	169.50	153.73 in	15.8									
18+00	169.00	153.85	15.1									
					4" SDR 35 18+20 4" E 165.0		95-12029-7		2338 Parkridge Ct		8-1-95	
19+00	168.60	154.15	14.5									
	168.40	154.21	14.2	19+20.47		4" E. 156.21 4" sch 40	95-10817-1		2342 Parkridge Ct		7-17-95	
	168.40	154.31 in	14.1	0+00 L-7		19+70 4" E 162.5	97-2046-7		2348 Parkridge Ct		2-5-97	
20+00	171.40	154.45	16.9			20+40 4" E 162.0	96-8673-7		2350 Parkridge Ct		5-31-96	
	168.00	154.59	13.4	20+46.1								
L-2	0+00 L-2	166.80	158.58	8.2	0+00 = 9+01.81 L-1							
					4" SDR 35 0+81.0		95-15842-7		2205 Parkridge Ct		10-4-95	
1+00	167.00	158.98	8.0			4" SDR 35 1+24.6	95-4223-7		2213 Parkridge Ct		3-30-95	
2+00	167.50	159.38	8.1		4" SDR 35 2+20.7	4" SDR 35 2+22.7	96-12790-7	96-6247-7	2251 Parkridge Ct	2217 Parkridge Ct	7-19-96	4-26-96
	168.30	159.50	8.8	2+30.66								
L-3	0+00 L-3	167.30	161.18	6.1	0+00 = 10+24.15 L-1							
					4" sch 40 0+87.0		95-16444-7		2305 Parkridge Ct		7-16-95	
1+00	167.50	161.58	5.9									
					1+76.0 4" sch 40		96-4332-7		2307 N Parkridge Ct		4-1-96	
2+00	168.30	161.98	6.3									
							96-2685-7		2309 Parkridge Ct		7-9-99	
3+00	169.00	162.38	6.6		3+40.2 4" SDR 35				2311 Parkridge Ct		2-29-96	
	169.50	162.60	6.9	3+55.17								
4+00	169.50	162.78	6.7		4+29.2 4" SDR 35	4" SDR 35 4+28.7	95-20165-7		2313 Parkridge Ct		12-19-95	
							95-19459-7		2315 Parkridge Ct		11-27-95	
5+00	170.00	163.18	6.8									
					5+85.8 4" SDR 35		96-1635-7		2317 Parkridge Ct		2-9-96	
6+00	170.50	163.58	6.9									
	171.10	164.02	7.1	7+05.41	4" sch 40 6+97.4		96-8683-7		2319 Parkridge Ct		6-4-96	

2330 N ParkRidge Ct - Inspector Reports Riser within 3' of Bldg

5