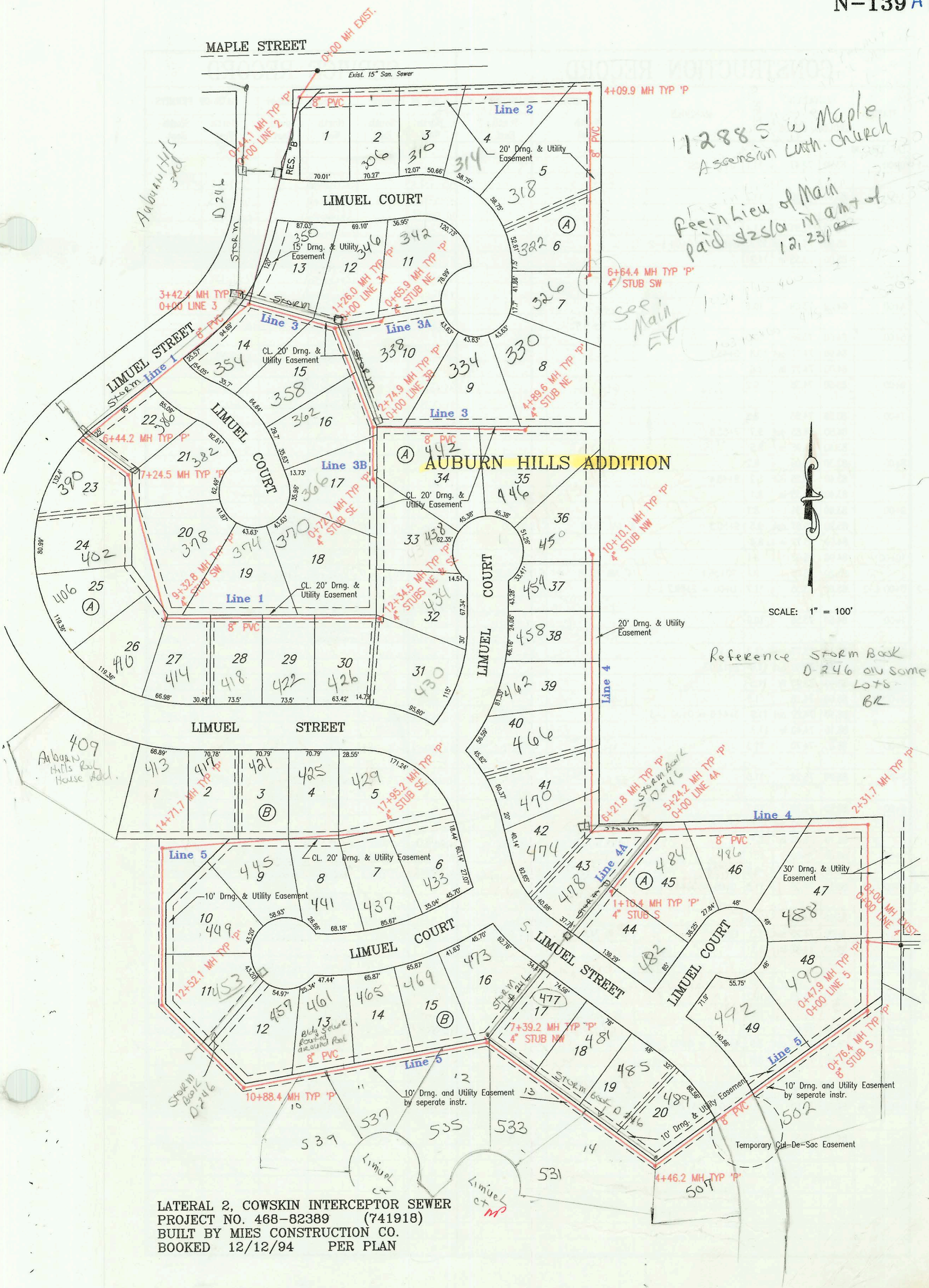


MAPLE STREET



12885 W Maple
Ascension Luth. Church

See in lieu of Main
paid \$2500 in amt of
12, 23/02

See Main
EXT



SCALE: 1" = 100'

Reference STORM BACK
D-246 on some
lots
BL

LATERAL 2, COWSKIN INTERCEPTOR SEWER
PROJECT NO. 468-82389 (741918)
BUILT BY MIES CONSTRUCTION CO.
BOOKED 12/12/94 PER PLAN

CONSTRUCTION RECORD						SERVICE RECORD						
STATION	ELEVATION		DEPTH	MANHOLE	4-INCH "Y" BRANCHES		No. of Permit		House Number		DATE OF PERMITS	
	GROUND	GRADE			North West	South East	North West	South East	North West	South East	North West	South East
L-1	LATERAL 2,	COWSKIN	INTERCEPTOR									
0+00 L-1	138.70	132.28	6.4	0+00 EXIST								
	142.50	132.46 out	10.0	0+44.1=0+00 L-2								
	142.50	132.56 in	9.9									
1+00	141.90	132.78	9.1									
2+00	142.30	133.18	9.1									
3+00	142.80	133.58	9.2									
	143.40	133.75 out	9.6	3+42.4=0+00 L-3								
	143.40	133.85 in	9.5									
4+00	143.50	134.08	9.4									
5+00	143.80	134.48	9.3									
6+00	144.70	134.88	9.8									
	145.80	135.06 out	10.7	6+44.2								
	145.80	135.16 in	10.6		4" sch 40 6+69.5		95-16600-7		386 Limuel ct		10-18-95	
7+00	143.00	135.38	7.6									
	143.50	135.48 out	8.0	7+24.5	4" SDR 35 7+47.5		95-9948-7		382 S. Limuel ct		6-30-95	
	143.50	135.58 in	7.9									
8+00	143.30	136.23	7.1		4" SDR 35 8+25.8 9+66.8 4" SDR 35	4" SDR 35 8+21.0	96-995-7 96-15609-7	94-19625-7 402 Limuel	378 Limuel ct	1-25-96 9-18-96	11-16-94	
9+00	144.20	137.10	7.1									
	145.10	137.39 out	7.7	9+32.8		4" SW 137.72						
	145.10	137.49 in	7.6									
10+00	145.00	137.89	7.1		9+59.8 4" SDR 35 4" SDR 35 10+26.3 4" SDR 35 10+89.5		96-973-7 97-691-7	95-9949-7 374 Limuel	414 Limuel 418 Limuel 482 S. Limuel	1-25-96 7-15-97	6-30-95 11-14-96	
11+00	145.90	138.49	7.4									
	146.80	139.09	7.7		11+69.5 4" sch 40	11+64.9 4" sch 40	96-1631-7	96-19926-7	370 S. Limuel ct	426 Limuel	2-9-96	11-20-96
12+00	148.00	139.30	8.7	12+34.5		4" NE 139.63	4" SE 139.63	99-15209-7	434 Limuel	430 S. Limuel ct	8-28-97	8-10-95
L-2	0+00 L-2	142.50	132.56	9.9	0+00=0+44.1 L-1							
1+00	142.20	132.96	9.2					98-7780-7	310 Limuel		4-30-94	
2+00	141.90	133.36	8.5					96-561-7	315 S. Limuel ct		1-9-96	
3+00	141.00	133.76	7.2									
4+00	140.20	134.16	6.0									
	140.70	134.20 out	6.5	4+09.9								
	140.70	134.30 in	6.4									
5+00	141.30	134.66	6.6									
6+00	142.80	135.06	7.7		4" SDR 35 6+13.9 4" SDR 35 6+33.4		95-19461-7 95-19460-7	318 S. Limuel ct 322 S. Limuel ct		11-27-95 11-27-95		
144.40	135.32	9.1	6+64.4	4" SW 135.65			94-19632-7			11-29-94		
L-3	0+00 L-3	143.40	133.85	9.5	0+00=3+24.5 L-1							
1+00	142.10	135.05	7.1									
	142.50	135.36 out	7.1	1+26.0=0+00 L-3A	4" SDR 35 1+03.0		94-19180-7	358 Limuel		11-16-94		
	142.50	135.46 in	7.0									
2+00	143.00	136.35	6.6		4" SDR 35 1+60.0 4" SDR 35 2+35.4		94-19185-7	338 S. Limuel ct	362 S. Limuel ct		11-16-94	3-22-94
	144.80	137.24 out	7.6	2+74.9=0+00 L-3B			95-491-7					
	144.80	137.34 in	7.5									
3+00	144.50	137.49	7.0									
	144.80	138.09	7.3		4" sch 40 3+86.9		94-18246-7	442 S. Limuel ct		10-19-94		
	146.80	138.63	8.2	4+89.6		4" NE 138.97 sch 40		97-11662-7	446 S. Limuel		1-27-97	
L-3A	0+00 L-3A	142.50	135.46	7.0	0+00=1+26.0 L-3							
	144.00	135.72	8.3	0+65.9		4" NE 136.05		94-19059-7	330 S. Limuel		11-16-94	
	144.00	135.72	8.3	0+65.9		4" NE 136.05		97-689-7	346 Limuel ct		1-17-97	
L-3B	0+00 L-3B	144.80	137.35	7.4	0+00=2+74.9 L-3	4" SDR 35 0+57.7		96-21085-7	342 Limuel ct		12-16-96	
	145.70	138.08	7.6	0+72.7		4" SE 138.41 4" SDR 35		95-6531-7	360 Limuel	55-95		
L-4	0+00 L-4	140.50	128.62	11.9	0+00 EXIST							
	139.10	129.10 out	10.0	0+47.9=0+00 L-5								
	139.10	129.20 in	9.9									
1+00	138.80	129.72	9.1									
	139.50	130.72	8.8		4" sch 40 PVC 1+43.8 tap				488 S. Limuel ct		4-17-96	
2+00	140.30	131.04 out	9.3	2+31.7								
	140.30	131.14 in	9.2									