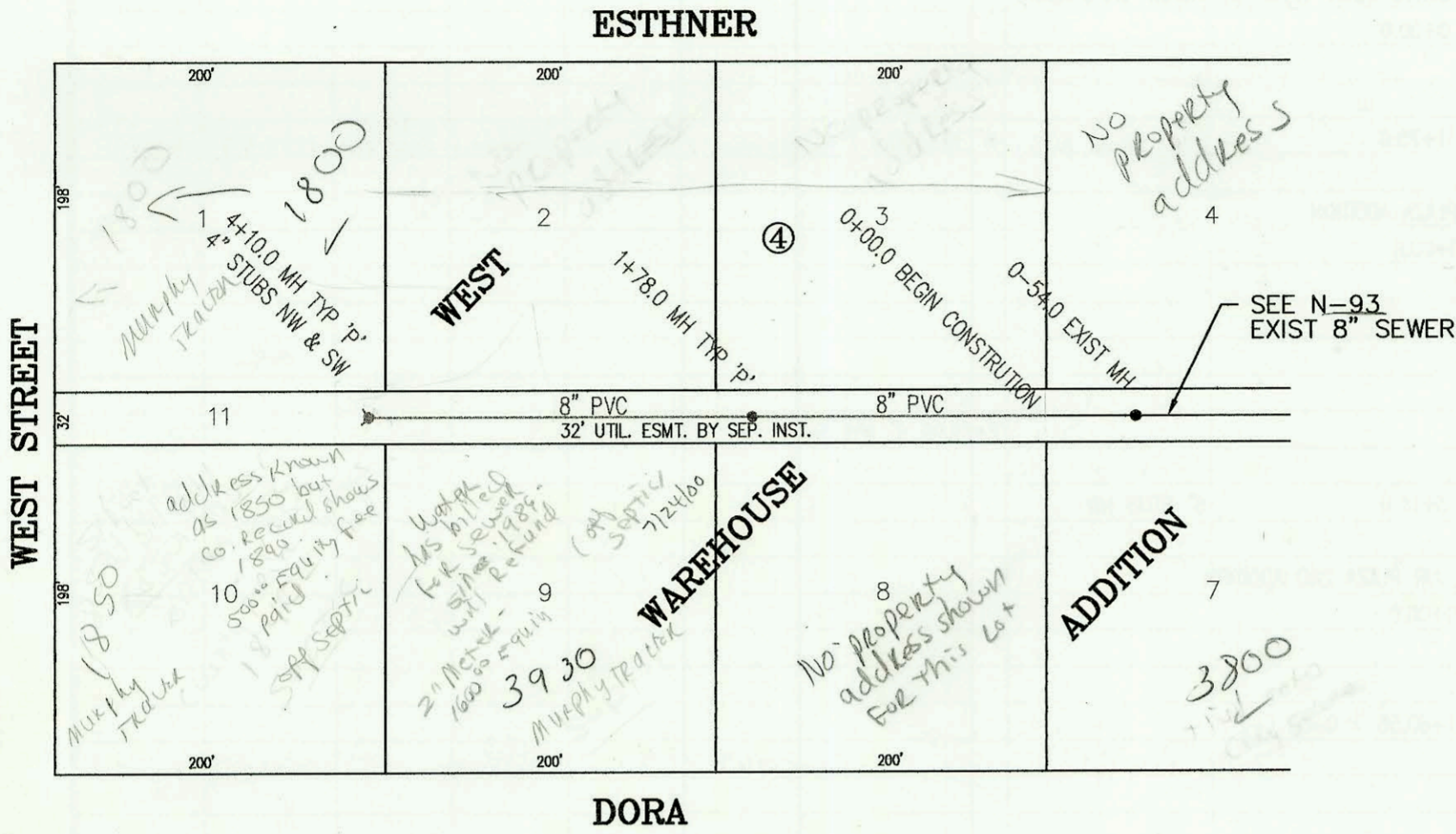


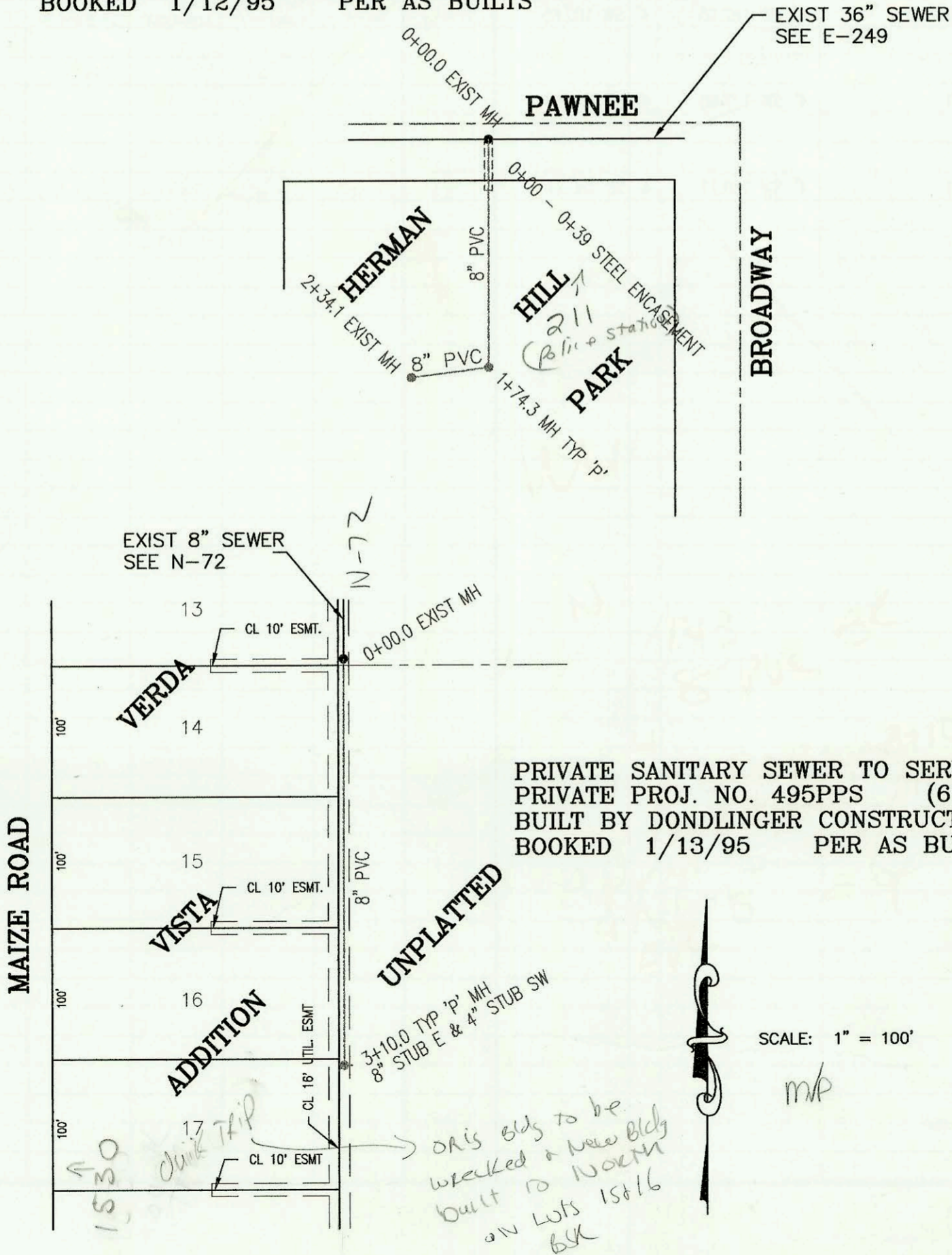
PRIVATE SANITARY SEWER TO SERVE WEST WAREHOUSE ADDITION  
 PRIVATE PROJ. NO. 498PPS (607861)  
 BUILT BY PEARSON EXCAVATION  
 BOOKED 1/11/95 PER AS BUILTS



SCALE: 1" = 100'

mp  
 follow up to Health Dept  
 6-20-95

PRIVATE SANITARY SEWER TO SERVE PUBLIC SAFETY FACILITY  
 IN HERMAN HILL PARK  
 PRIVATE PROJ. NO. 459PPS (607861)  
 BUILT BY W. B. CARTER CONSTRUCTION CO.  
 BOOKED 1/12/95 PER AS BUILTS



SCALE: 1" = 100'

mp

PRIVATE SANITARY SEWER TO SERVE VERDA VISTA ADDITION  
 PRIVATE PROJ. NO. 495PPS (607861)  
 BUILT BY DONDLINGER CONSTRUCTION CO.  
 BOOKED 1/13/95 PER AS BUILTS

SCALE: 1" = 100'

mp

CONSTRUCTION RECORD					SERVICE RECORD							
STATION	ELEVATION		DEPTH	MANHOLE	4-INCH "Y" BRANCHES		No. of Permit		House Number		DATE OF PERMITS	
	GROUND	GRADE			North West	South East	North West	South East	North West	South East	North West	South East
PRIVATE SANITARY SEWER TO WEST WAREHOUSE ADDITION												
0-54	113.27	101.85 out	11.4	0-54.0 EXIST MH								
	113.27	101.95 in	11.3									
0+00	109.50	102.15	7.3	BEGIN CONST.								
1+00	110.60	102.51	8.1									
	111.83	102.79 out	9.0	1+78.0								
	111.83	102.80 in	9.0									
2+00	110.50	102.90	7.6									
3+00	110.40	103.33	7.1		4" SDR 35 3+34.0 tap		95-1049-7	1800 S. West		1-25-95		
						4" sch 40 2+92		2000 01652	3930 well			7-18-00
4+00	111.20	103.77	7.4			4" sch 40						
	111.54	103.81	7.7	4+10.0	4" NW & SW 104.15	4" stub SW		2000 01651	1850 west	See Below		7-18-00
PRIVATE SANITARY SEWER TO SERVE PUBLIC SAFETY FACILITY TO HERMAN HILL PARK												
0+00	97.17	90.27	6.9	0+00.0 EXIST MH								
						4" sch 40 #65 0+67.3		95-224-7		211 E. Pawnee		9-15-94
1+00	97.20	90.57	6.6									
	97.40	90.81 out	6.6	1+74.3								
	97.40	90.91 in	6.5									
2+00	97.20	91.26	5.9									
	97.40	91.73	5.7	2+34.1								
PRIVATE SANITARY SEWER TO SERVE VERDA VISTA ADDITION												
0+00.0	134.00	125.60 out	8.4	0+00.0								
	134.00	125.60 in	8.4									
1+00	134.60	126.13	8.5									
2+00	135.20	126.66	8.5									
3+00	135.50	127.20	8.3		Seal off SDR 35		2001-0825					
	135.85	127.25	8.6	3+10.0	4" SW 127.48	8" E 127.25	74-1995-7		1530 S. Maize Rd	See below	4-9-01	12-8-94
<p>NC-2000-01651-1850 S West St- 4" sch 40 - 1-way, 1-Twin co, 2H22, 4H45- installed new 1000 gal mud 9011 interceptor with invert on outlet.</p> <p>Sp 2001-00825- 1530 S Maize Rd- McCullough Exc- 4" sch 40 line slo in MH stub. Stubbed south. MH is located in NE corner of lot</p>												