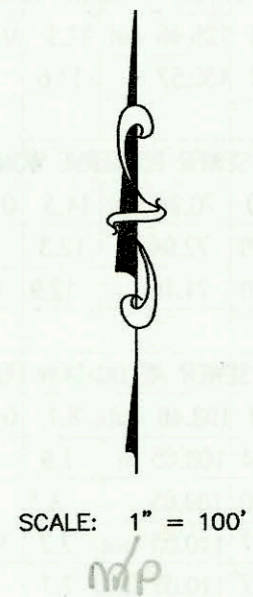
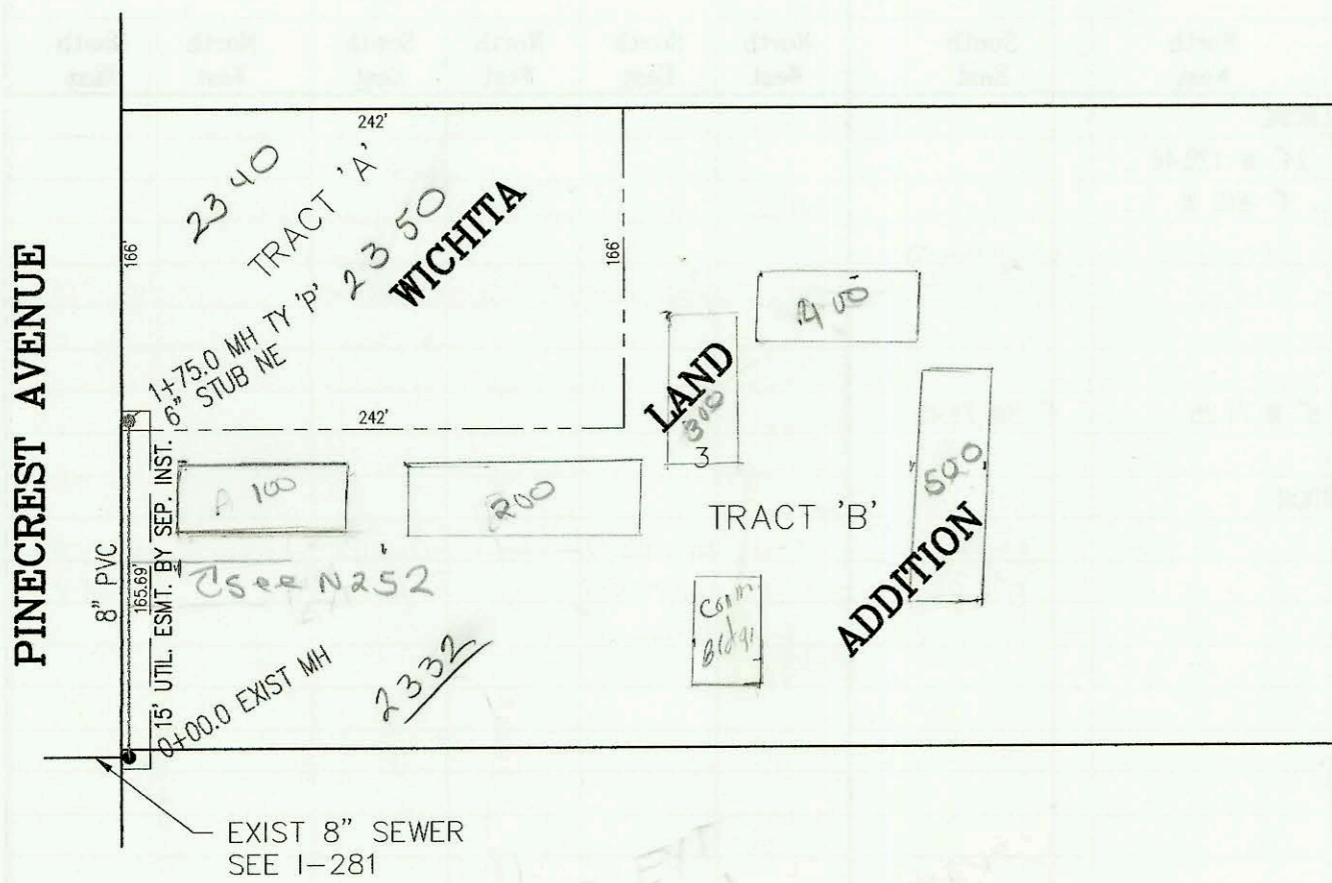
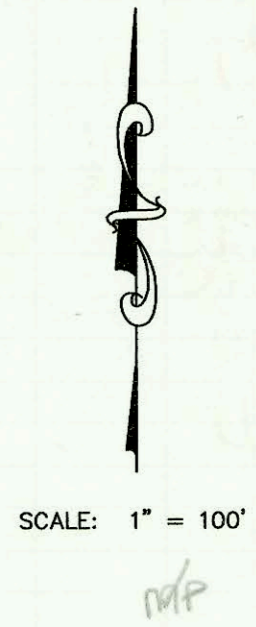
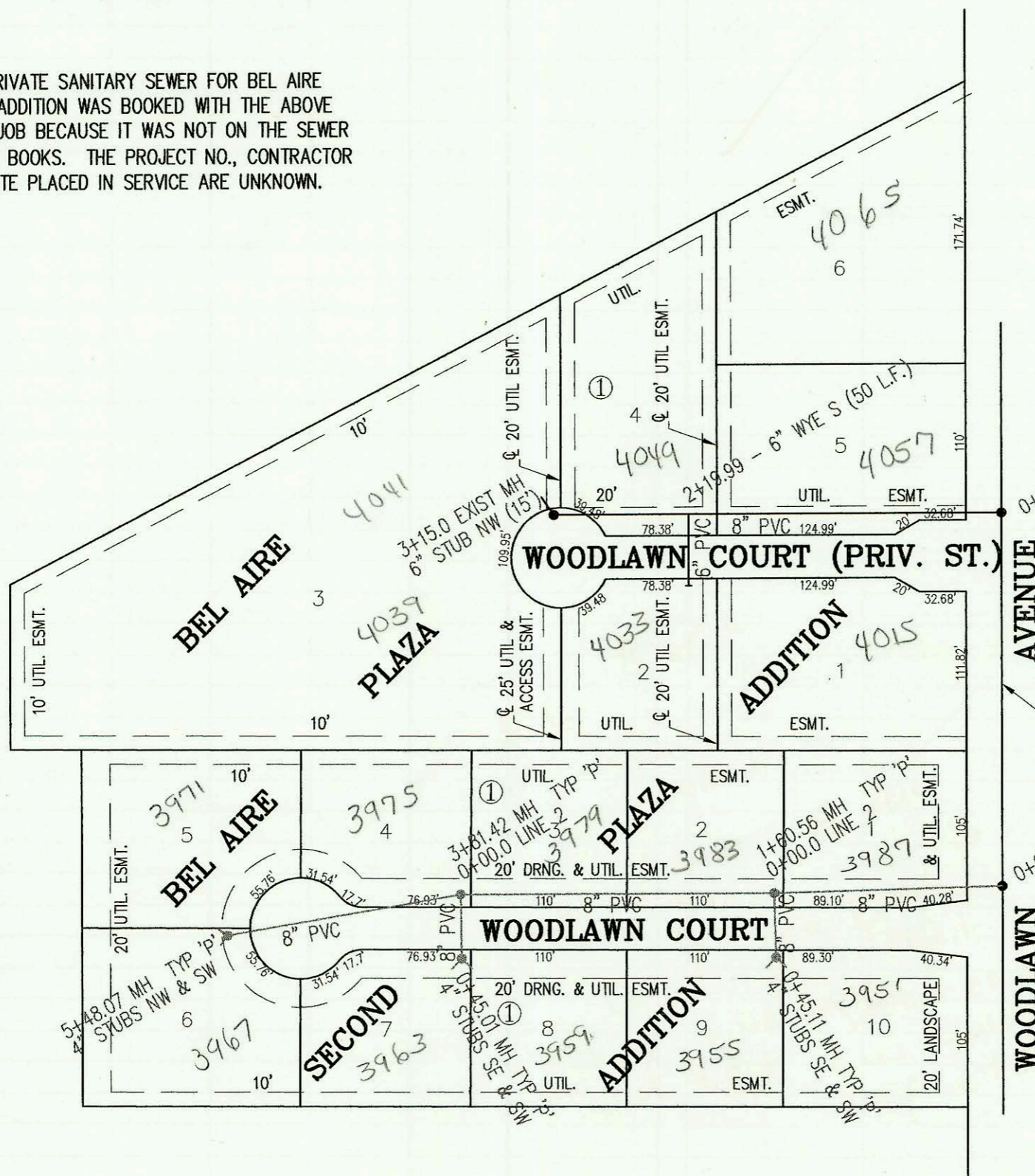


PRIVATE SANITARY SEWER TO SERVE TRACT 'A', LOT 3, WICHITA LAND ADDITION  
 PRIVATE PROJECT NO. 419 PPS (607861)  
 BUILT BY MIES CONSTRUCTION CO.  
 BOOKED 01/17/95 PER AS BUILTS



PRIVATE SANITARY SEWER TO SERVE BEL AIRE PLAZA SECOND ADDITION  
 PRIVATE PROJECT NO. 479 PPS (607861)  
 BUILT BY DONDLINGER CONSTRUCTION CO.  
 BOOKED 01/17/95 PER AS BUILTS

NOTE: THE PRIVATE SANITARY SEWER FOR BEL AIRE PLAZA ADDITION WAS BOOKED WITH THE ABOVE NOTED JOB BECAUSE IT WAS NOT ON THE SEWER RECORD BOOKS. THE PROJECT NO., CONTRACTOR AND DATE PLACED IN SERVICE ARE UNKNOWN.



*Bel Aire  
 issue manual  
 sewer permits*

