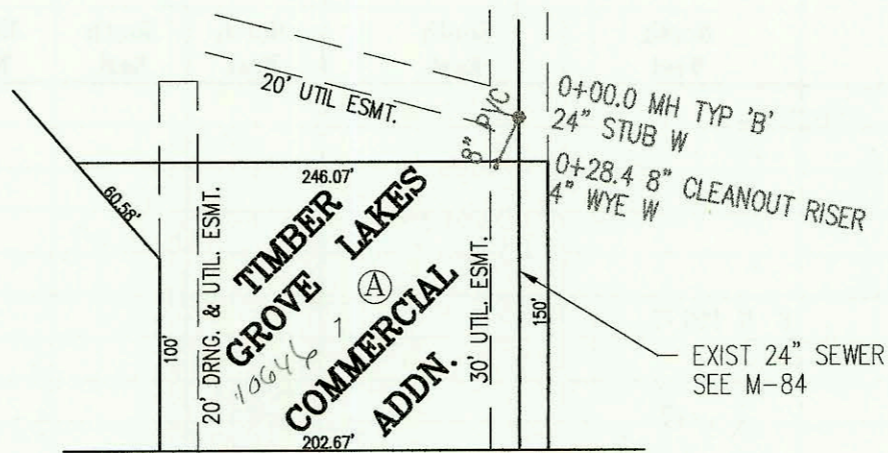


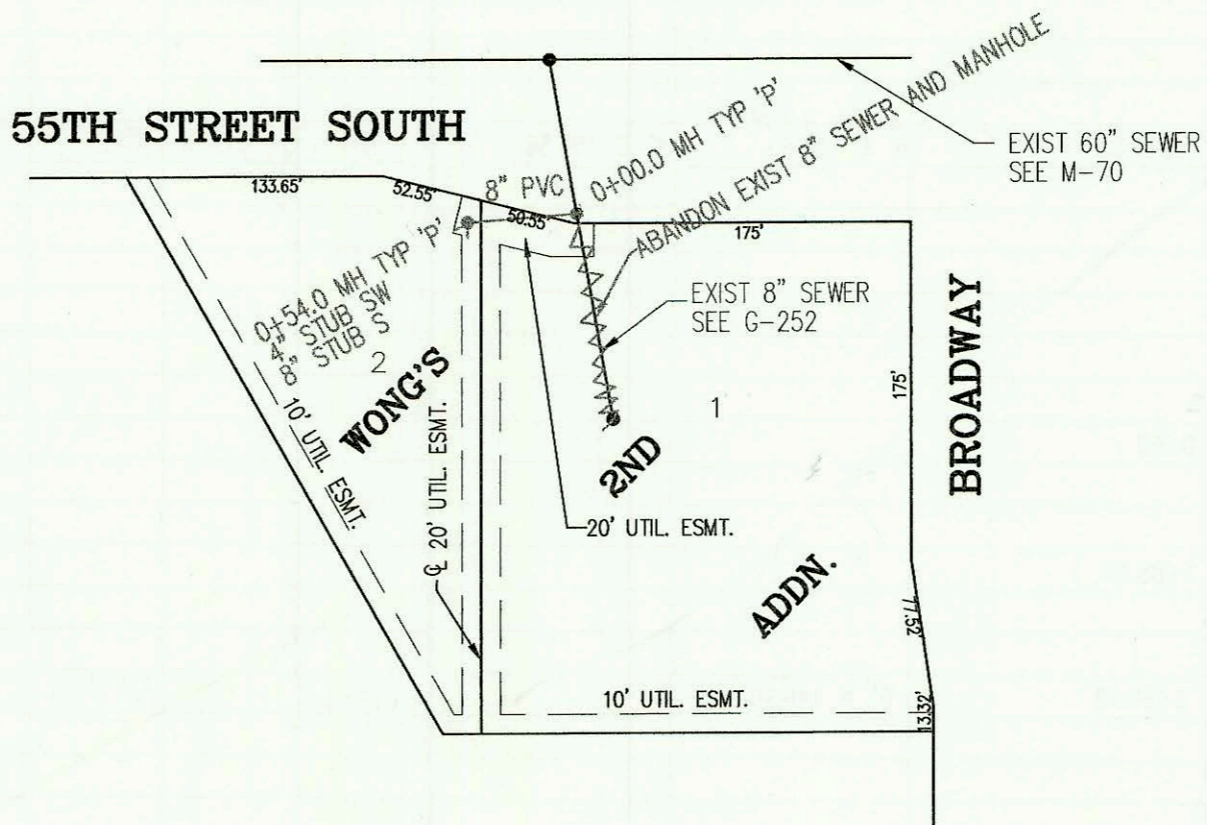
PRIVATE SANITARY SEWER TO SERVE TIMBER GROVE LAKES COMMERCIAL ADDITION
PRIVATE PROJECT NO. 483PPS (607861)
BUILT BY DULING CONSTRUCTION CO.
BOOKED 01/19/95 PER AS BUILTS



SCALE: 1" = 100'

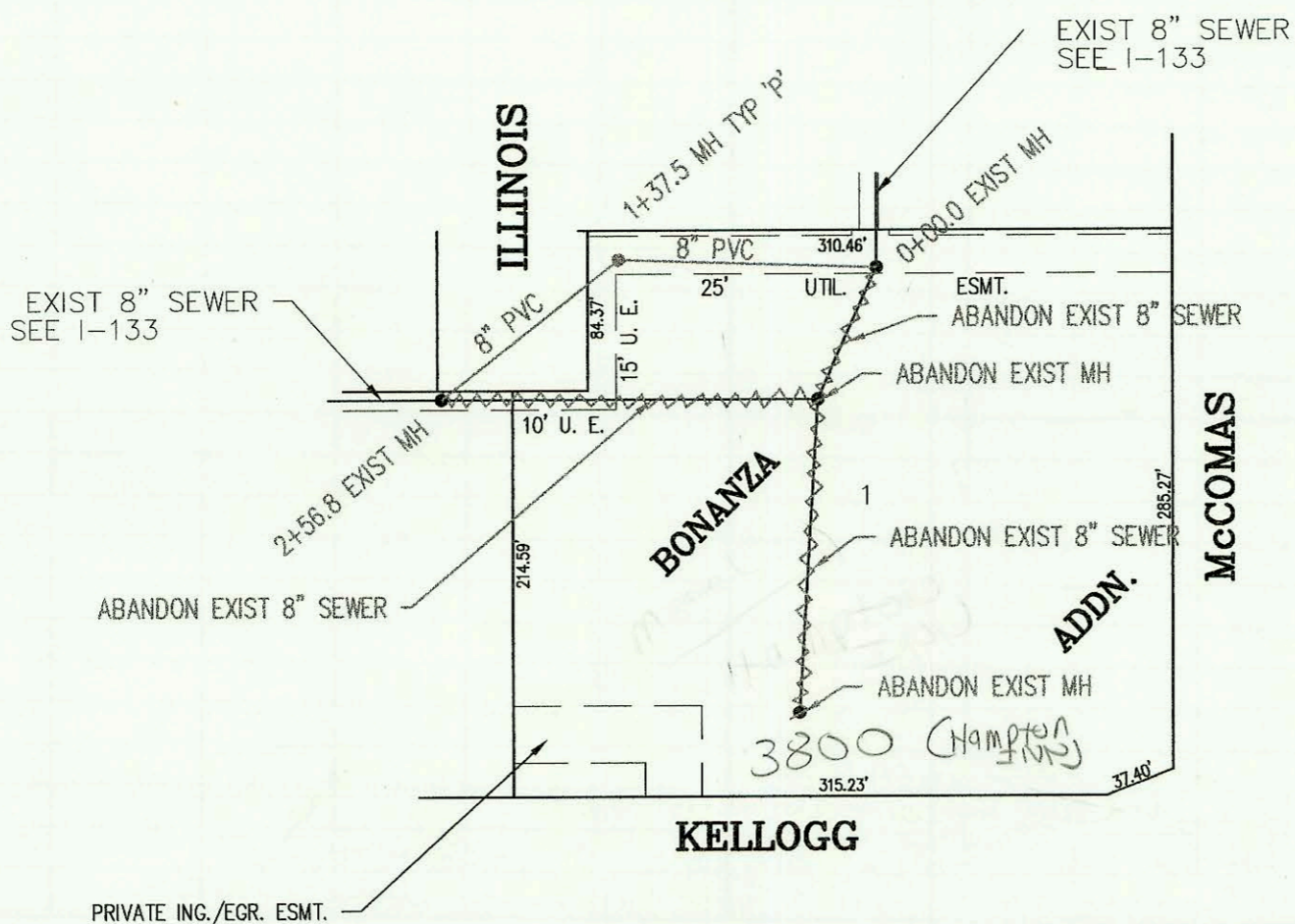
CENTRAL

PRIVATE SANITARY SEWER TO SERVE WONG'S 2ND ADDITION
PRIVATE PROJECT NO. 501 PPS (607861)
BUILT BY DONDLINGER CONSTRUCTION CO.
BOOKED 01/19/95 PER AS BUILTS



SCALE: 1" = 100'

PRIVATE SANITARY SEWER RELOCATION TO LOT 1, BONANZA ADDITION
PRIVATE PROJECT NO. 492 PPS (607861)
BUILT BY W. B. CARTER CONSTRUCTION CO.
BOOKED 01/23/95 PER AS BUILTS



SCALE: 1" = 100'

CONSTRUCTION RECORD						SERVICE RECORD						
STATION	ELEVATION		DEPTH	MANHOLE	4-INCH "Y" BRANCHES		No. of Permit		House Number		DATE OF PERMITS	
	GROUND	GRADE			North West	South East	North West	South East	North West	South East	North West	South East
PRIVATE SANITARY SEWER TO SERVE TIMBER GROVE LAKES COMMERCIAL												
0+00.0	141.41	128.46 out	12.9	0+00.0	24" W 128.46							
0+28.4	142.22	130.57	11.6		4" WYE W		74-14622-7		10646 w Central	500 Below	9-12-94	
PRIVATE SANITARY SEWER TO SERVE WONG'S 2ND ADDITION												
0+00.0	85.20	70.94 out	14.3	0+00.0								
	85.20	72.94 in	12.3									
	84.10	71.16	12.9	0+54.0	8" W 71.25	4" SW 71.45						
PRIVATE SANITARY SEWER RELOCATION FOR LOT 1, BONANZA ADDITION												
0+00.0	116.54	108.46 out	8.1	0+00.0								
	116.54	108.65 in	7.9									
1+00	118.00	109.65	8.3									
	117.77	110.03 out	7.7	1+37.5								
	117.77	110.07 in	7.7									
2+00	117.70	110.76	6.9									
	117.90	111.38 out	6.5	2+56.8								
	117.90	111.46 in	6.4									

74-14622-7 9-12-94 10646 W CENTRAL - 4" ABS - 8X4 SP35 WYE ON VERTICAL RISE PIP