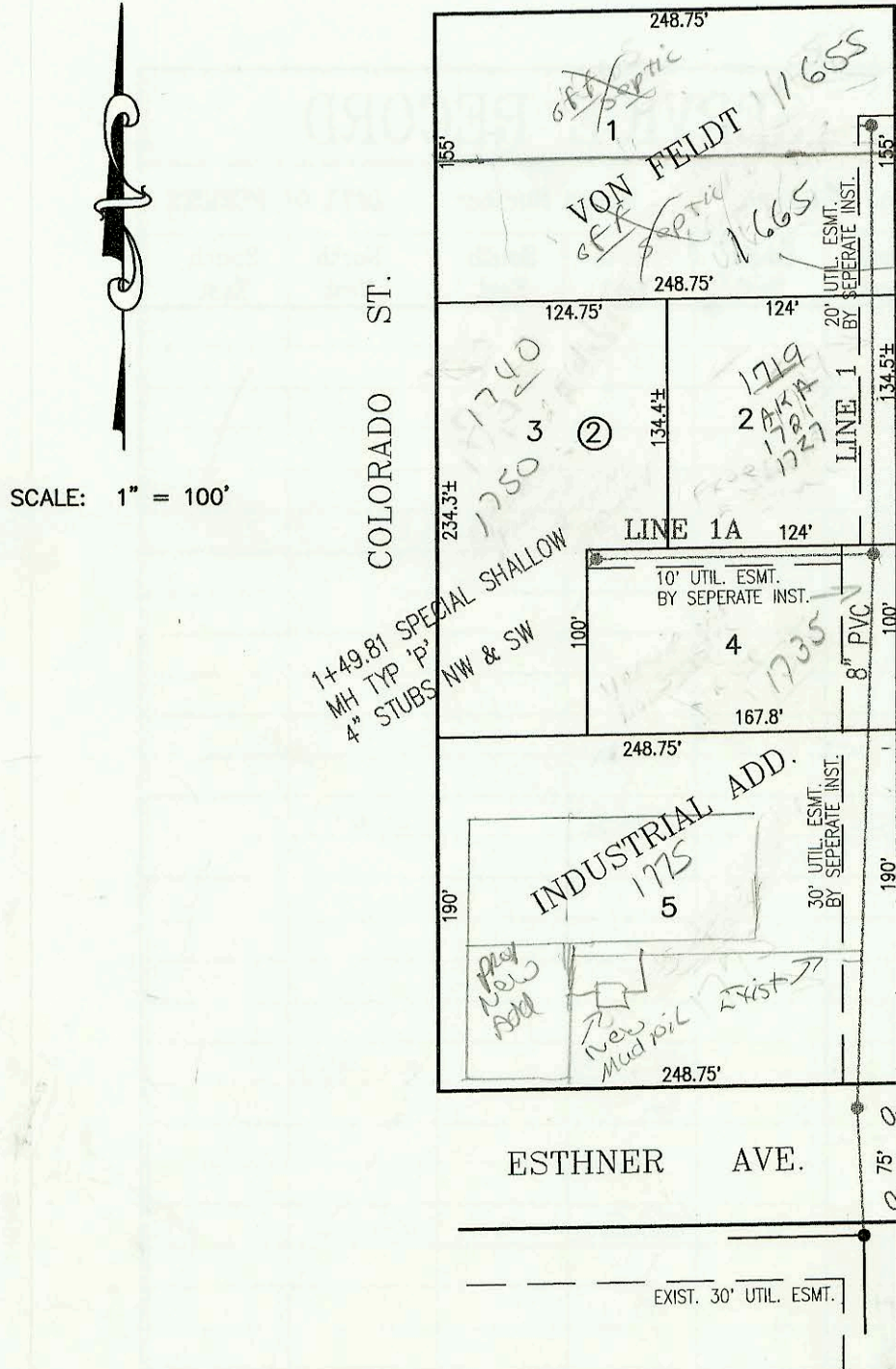


BOUNOUS ST.



SCALE: 1" = 100'

LATERAL 9, MAIN 14, SOUTHWEST INTERCEPTOR SEWER
 PROJECT NO. 468-82373 (741868)
 BUILT BY W. B. CARTER CONSTRUCTION CO.
 BOOKED 3/27/95 PER PLAN

IN PROCESS of getting private ease from 1655 west to 1665 west Run and sewer service line on their lot to connect to city sewer. Terry Irwin Plbg is working on getting us a copy of ease so we can issue him a permit.

1. Need to play parcel under 1655 to record PRW ease.
2. Keep copy of ease in sewer book.
3. Put Not on List for 1655 about ease. FRASE These NOTES
4. Issue sewer permit

LAT 2, MAIN 16, SWI SEWER SERVICE TABLE

NO.	TYPE	LOCATION				FOR INFORMATION ONLY	
		LOT NO.	BLOCK NO.	LINE NO.	STATION/DIRECTION	APPROXIMATE LENGTH 4" PIPE	
						VERTICAL	HORIZONTAL
1	8"x4" Tapping Saddle	1	1	1	4+45/LT	9'	9'
2	4" Stub	2	1	1	6+93.2/WSW	9'	14'
3	4" Stub	3	1	1	8+12.5/W	9'	15'
4	4" Stub	4	1	1	10+14.9/W	9'	14'
5	4" Stub	5	1	1	10+14.9/NW	9'	19'
6	8"x4" Tapping Saddle	6	1	1	11+55/LT	9'	12'
7	4" Stub	7	1	1	14+31.7/SW	7'	15'
8	4" Stub	8	1	1	16+34.9/SW	6'	14'
9	4" Stub	9	1	1	16+34.9/W	6'	20'
10	8"x4" Tapping Saddle	10	1	1	17+95/LT	5'	19'
11	4" Stub	11	1	1	18+63.1/NW	4'	29'
12	8"x4" In-line Wye	12	1	1	19+80.8/LT	3'	16'
13	8"x4" In-line Wye	13	1	1	19+82.4/RT	3'	12'
14	8"x4" In-line Wye	33	1	2	0+87.2/RT	5'	16'
15	8"x4" In-line Wye	32	1	2	0+88.8/LT	5'	25'
16	8"x4" In-line Wye	17	1	3	0+84.5/LT	5'	20'
17	8"x4" In-line Wye	18	1	3	0+86.1/LT	5'	8'
18	8"x4" In-line Wye	16	1	4	0+78.2/RT	4'	20'
19	8"x4" In-line Wye	15	1	4	0+79.8/LT	4'	10'
20	8"x4" In-line Wye	14	1	5	0+77.9/LT	3'	40'
21	8"x4" Tapping Saddle	34	1	6	1+00/LT	6'	40'
22	4" Stub	35	1	6	2+00.3/NE	6'	14'
23	4" Stub	36	1	6	3+29/NNE	6'	14'
24	8"x4" Tapping Saddle	37	1	6	5+45/LT	5'	14'
25	8"x4" Tapping Saddle	38	1	6	6+50/LT	4'	6'
26	4" Stub	39	1	6	7+17.4/NE	4'	5'
27	4" Stub	40	1	6	7+83.4/ESE	4'	12'
28	8"x4" In-line Wye	41	1	6	8+36.4/LT	3'	9'
29	8"x4" Tapping Saddle	31	1	7	1+00/RT	7'	12'
30	8"x4" Tapping Saddle	30	1	7	3+00/RT	6'	9'
31	4" Stub	29	1	7	3+86.3/SSE	6'	4'
32	8"x4" Tapping Saddle	28	1	7	5+30/RT	5'	4'
33	8"x4" Tapping Saddle	27	1	7	6+95/RT	4'	3'
34	4" Stub	26	1	7	7+90.1/SE	4'	6'
35	8"x4" In-line Wye	25	1	7	8+58.6/LT	3'	42'
36	8"x4" In-line Wye	19	1	8	0+80.0/LT	4'	18'
37	8"x4" In-line Wye	20	1	8	0+81.6/RT	4'	14'
38	8"x4" In-line Wye	22	1	9	0+71.4/RT	4'	22'
39	8"x4" In-line Wye	21	1	9	0+73.0/LT	4'	10'
40	8"x4" In-line Wye	24	1	10	1+22.4/RT	3'	18'
41	8"x4" In-line Wye	23	1	10	1+24.0/LT	3'	10'

*17469
68.9*

90 off line

NOTES:

1. Vertical Riser Pipe shall be extended to 2' minimum above ground water elevation and 4' maximum below proposed ground elevation.

CONSTRUCTION RECORD						SERVICE RECORD						
STATION	ELEVATION		DEPTH	MANHOLE	4-INCH "Y" BRANCHES		No. of Permit		House Number		DATE OF PERMITS	
	GROUND	GRADE			North West	South East	North West	South East	North West	South East	North West	South East
LATERAL 9, MAIN 14, SOUTHWEST INTERCEPTOR SEWER												
LINE 1	0+00 L-1	112.66	89.76 out	22.9	0+00 EXIST							
		112.66	105.43 in	7.2								
		110.74	105.71 out	5.0	0+89.99-0+68.99							
		110.74	105.81 in	4.9								
	1+00	110.60	105.93	4.7		4" SDP 35 1+46.9	97-437-7		1775 West		12-24-96	
	2+00	110.80	106.33	4.5		4" sch 40 2+62.9	97-652-7		1735 West		4-24-97	
	3+00	111.80	106.73	5.1								
		111.12	107.00 out	4.1	3+66.85 = 0+00 L-1A							
		111.12	107.10 in	4.0		4" SDP 35 4+82.35 N/C	75-4673-7		1719 SWEST	1727 SWEST	3-30-95	
	4+00	111.60	107.23	4.4								
	5+00	111.00	107.63	3.4		4" sch 40 5+30.3	95-8736-7		1665 West		10-26-95	
		111.42	108.02	3.4	5+97.35	4" W 108.35 4" sch 40	95-0087-36-07-01		1655		10-25-95	
LINE 1A	0+00 L-1A	111.12	107.20	3.9	0+00 = 3+66.85 L-1							
	1+00	111.90	107.60	4.3								
		112.43	107.80	4.6	1+49.81	4" SDP 35 4" NW 108.13	95-8730-7	95-8731-7	1750 Colorado	1740 Colorado	6-15-95	6-15-95
LATERAL 2, MAIN 16, SWI CONTINUED FROM N-160												
LINE 6	7+00	139.40	132.02	7.4								
		139.60	132.07 out	7.5	7+17.4	4" NE, #26 4" SDP 35	96-20480-7		2014 Northshore		12-9-96	
		139.60	132.17 in	7.4								
		139.30	132.37 out	6.9	7+83.4	4" SDP 35 7+83.4 4" ESE, #2		96-18668-7		2610 Northshore		10-30-96
		139.30	132.47 in	6.8								
	8+00	139.00	132.52	6.5								
	8+42.9	139.40	132.65	6.8		8+36.4 4" SE, #28		96-269-7		2606 Northshore		1-8-96
LINE 7	0+00 L-7	142.40	129.88	12.5	0+00=12+27.6 L-1							
	1+00	141.40	130.18	11.2		4" SDP 35 1+00 4" S, #29		95-12451-7		2646 Northshore		8-9-95
		141.50	130.37	11.1	1+64.0							
	2+00	141.60	130.48	11.1								
	3+00	140.50	130.78	9.7		3+00 4" S, #30		98-2493-7		2728		
		141.30	131.04	10.3	3+86.3=0+00 L-8	4" SSE, #31 4" SDP 35		95-2327-7		2732 Northshore		6-6-95
	4+00	141.00	131.08	9.9								
	5+00	141.00	131.38	9.6		4" SDP 35 5+30 4" S, #32		96-980-7		2736 Northshore		1-25-96
		140.70	131.63	9.1	5+83.0=0+00 L-9							
	6+00	140.50	131.68	8.8								
						6+95 4" S, #33		97-1647-7		2740 Northshore		2-3-97
	7+00	140.30	131.98	8.3								
		140.20	132.25	7.9	7+90.1=0+00 L-10	4" SE, #34 4" SDP 35		96-2790-7		2744 Northshore		2-29-96
	8+00	139.90	132.28	7.6								
	8+65.1	139.70	132.48	7.2		8+58.6 4" NE, #35		96-16725-7		2748 Northshore		10-7-96
LINE 8	0+00 L-8	141.30	131.24	10.1	0+00=3+86.3 L-7							
	0+88.1	141.10	133.00	8.1		0+80 4" NW, #36	0+81.6 4" NE, #37	96-19897-7	96-15461-7	2772 Northshore	2768 Northshore	11-25-96 9-16-96
LINE 9	0+00 L-9	140.70	131.83	8.9								
	0+79.5	140.60	132.94	7.7		4" sch 40 0+73 4" N, #39	4" sch 40 0+71.4 4" NE, #38	96-15461-7	95-9899-7	2764 Northshore	2760 Northshore	9-16-96 6-20-95
LINE 10	0+00 L-10	140.20	132.45	7.8	0+00 = 7+90.1 L-7							
	1+00	138.80	132.85	5.9								
	1+30.5	139.60	132.97	6.6	1+30.5 C.O.	4" sch 40 1+24 4" N, #41	4" SDP 35 1+22.4 4" NE, #40	96-9487-7	95-6585-7	2756 Northshore	2752 Northshore	1-25-96 5-5-95