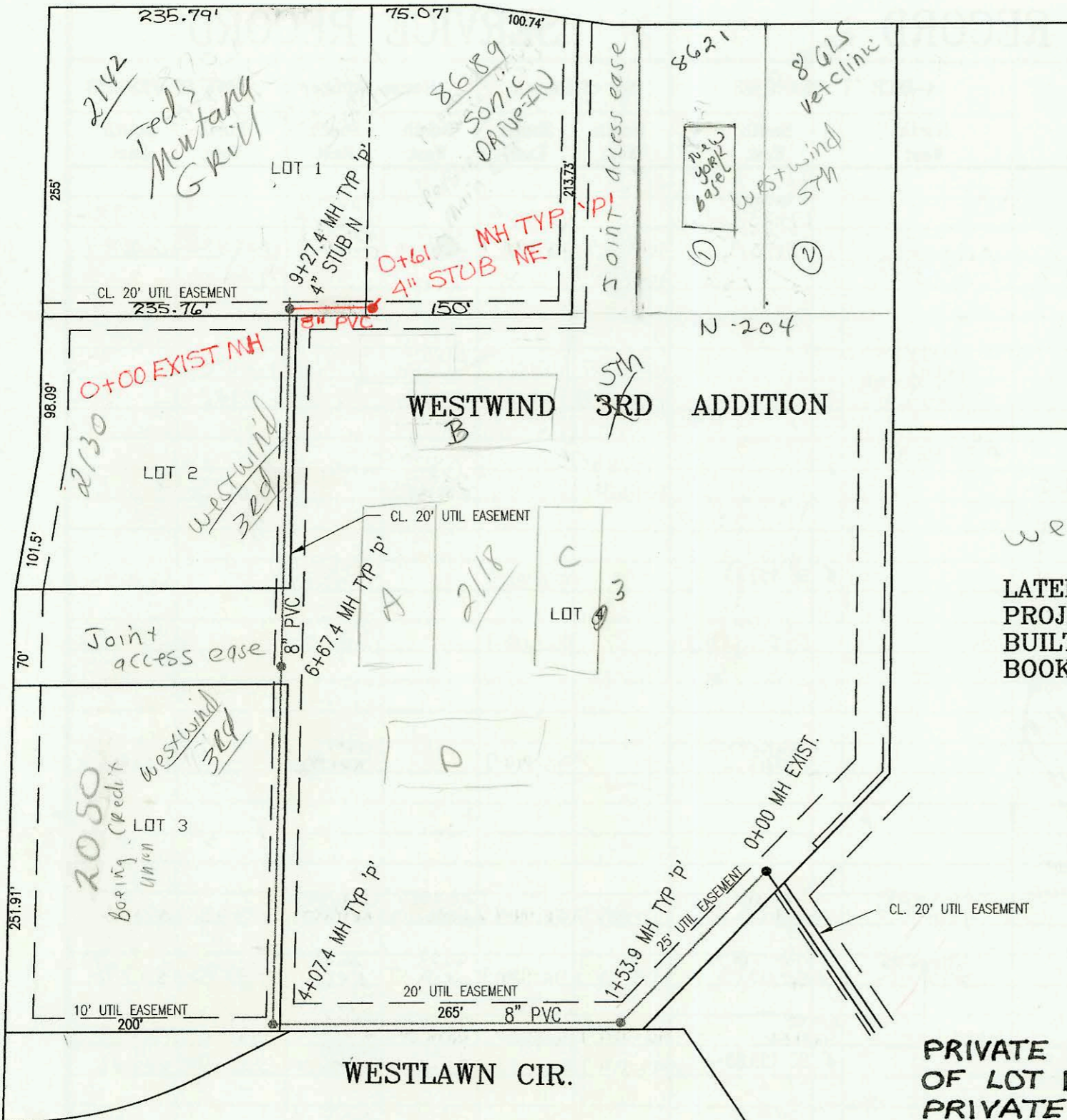


21ST STREET NORTH

TYLER ROAD



SCALE: 1" = 100'

LATERAL 243, SW. INTERCEPTOR SEWER
 PROJECT NO. 468-81700 (742171)
 BUILT BY NOWAK CONSTRUCTION CO.
 BOOKED 4/5/95 PER PLAN

PRIVATE SANITARY SEWER TO SERVE PART
 OF LOT 1, WESTWIND 3RD ADDITION
 PRIVATE PROJECT NO. 573 PPS (607861)
 BUILT BY MIES CONST. CO.
 BOOKED 9-15-95 FROM AS BUILTS

CONSTRUCTION RECORD					SERVICE RECORD							
STATION	ELEVATION		DEPTH	MANHOLE	4-INCH "Y" BRANCHES		No. of Permit		House Number		DATE OF PERMITS	
	GROUND	GRADE			North West	South East	North West	South East	North West	South East	North West	South East
LAT 113, WESTLINK (CONT. FROM N-163)												
LINE 10	7+00	165.60	158.06	7.5								
						4" SDR 35 7+08.9		96-985-7		8806 Central PK		1-25-96
						4" SDR 35 7+58.0		98-19600-7	96-13849-7	8817 Meadow Knoll	8810 Central PK	10-14-98
	8+00	165.70	158.36	7.3		4" SCH 40 8+47.4			2000- 00687	8814 Central PK		3-27-00
		166.60	158.58	8.0	8+75.0	4" SDR 35 8+83.0		96-944-7		8902 Central PK		1-25-96
	9+00	166.10	158.66	7.4				2001- 02761		8906 Central PK		10-30-01
						4" SCH 40 9+53.0		2000- 00686		8913 Meadow Knoll		3-15-00
	10+00	166.90	158.96	7.9		4" SDR 35 10+37.0				8910 Central PK		2-27-96
								2000- 00688		8913 Meadow Knoll		3-15-00
	11+00	167.40	159.26	8.1				2002- 00692		8914 Central PK		3-8-02
		168.00	159.43	8.6	11+55.0	5" SDR 35 11+85.0		96-404-7	96-2772-7	8917 Meadow Knoll	8918 Central PK	1-8-98
	12+00	167.90	159.56	8.3		4" SDR 35 12+52.0		95-18688-7		8922 Central PK		11-8-95
	13+00	168.50	159.86	8.6								
	14+00	169.00	160.16	8.8		4" SCH 40 14+08.6		2000- 00687		9021 W Meadow Knoll		3-15-00
		169.40	160.22	9.2	14+21.6=0+00 L-12							
	15+00	169.50	160.40	9.1								
	16+00	169.90	160.76	9.1		4" SDR 35 16+14.7		97-634-7	95-17054-7	9031 Meadow Knoll	9118 Central PK	4-17-97
	17+00	169.00	161.06	7.9				97-974-7		9205 Meadow Knoll		6-12-97
		168.80	161.20	7.6	17+45.78							
		168.80	161.30	7.5								
	18+00	168.70	161.46	7.2		4" SDR 35 18+62.8		96-987-7	95-17054-7	9214 Central PK	9122 W Central PK	1-25-96
	19+00	169.20	161.76	7.4		4" SCH 40 19+67.4		96-775-7	95-16046-7	9210 W Central PK	9126 W Central PK	1-8-96
	20+00	169.60	162.06	7.5		4" SDR 35 20+22.4				9206 Central PK	9130 Central PK	7-14-95
		170.30	162.34	8.0	20+92.38	4" SE 162.67		95-10781-7	95-16047-7	9202 Central PK	9134 Central PK	10-23-95
LINE 11	0+00 L-11	166.50	158.85	7.6	0+00=3+29.02 L-10							
	1+00	167.10	159.25	7.9		4" SDR 35 1+06.7				8827 Central PK		2-9-96
						4" SDR 35 1+97.8		96-6021-7		8825 Central PK		4-14-96
	2+00	168.00	159.65	8.4	2+43.79	4" SW 160.23		96-11398-7		8821 Central PK		7-16-96
LINE 12	0+00 L-12	169.40	160.32	9.1	0+00=14+21.6 L-10							
	1+00	169.60	160.72	8.9		4" SDR 35 1+01.5		95-17056-7		9110 Central PK		10-26-95
						4" SDR 35 1+58.8		95-17057-7		9115 Central PK		10-26-95
	2+00	170.00	161.12	8.9		4" SDR 35 2+05.3		95-18685-7		8930 Central PK		11-8-95
						4" SDR 35 2+52.8		95-18684-7		9106 Central PK		11-8-95
	3+00	170.60	161.52	9.1								
		171.00	161.55	9.4	3+07.83	4" SW 161.88		96-10971-7		9102 W Central PK		7-2-96
		171.00	161.65	9.4						9014 Central PK		11-3-96
	4+00	170.60	162.02	8.6		4" SDR 35 4+04.8		95-18673-7	96-11731-7	8934 W Central PK	9010 Central PK	11-8-95
	5+00	170.50	162.42	8.1		4" SDR 35 5+18.0		96-10975-7	96-2503-7	8938 Central PK	9006 Central PK	7-2-96
		170.80	162.71	8.1	5+74.01	4" SDR 35 5+32		95-20052-7		9052 Central PK		12-19-95
		170.80	162.81	8.0								
	6+00	170.40	162.92	7.5		4" SDR 35 6+19.0		96-13942-7		8954 Central PK		8-14-96
	7+00	170.00	163.32	6.7				99-3908-7	96-	8972 Central PK	8950 Central PK	3-1-99
		170.30	163.33	7.0	7+03.45	4" SE 163.66		96-4975-7		8946 Central PK		4-8-96
LINE 13	0+00 L-13	169.20	158.82	10.4	0+00 EXIST	0+20.0 4" SDR 35		96-9153-7		8905 W Central PK		6-11-96
						0+77.0 4" SDR 35		95-15347-7		8909 Central PK		9-27-95
	1+00	168.90	159.84	9.1								
						1+54.0 4" SDR 35		97-845-7		8913 Central PK		5-28-97
	2+00	168.50	160.87	7.6		2+33.0 4" SDR 35		96-15581-7		8917 Central PK		9-18-96
						4" SDR 35 2+51.2		00	95-20018-7	9001 Central PK	9002 Charley	2-17-97
	3+00	168.50	161.89	6.6								
		168.70	162.40	6.3	3+49.88	4" NW 162.73		96-11089-7		9005 Central PK		7-2-96
Private Sanitary Sewer To Serve Part Of Lot 1, Westwind 3RD Addition												
	0+00	170.42	161.51	8.9	0+00							
		170.42	161.88	8.5								
		170.38	162.04	8.3	0+61	4" NE 162.31		95-13101-7		8689 W 21st		8-21-95