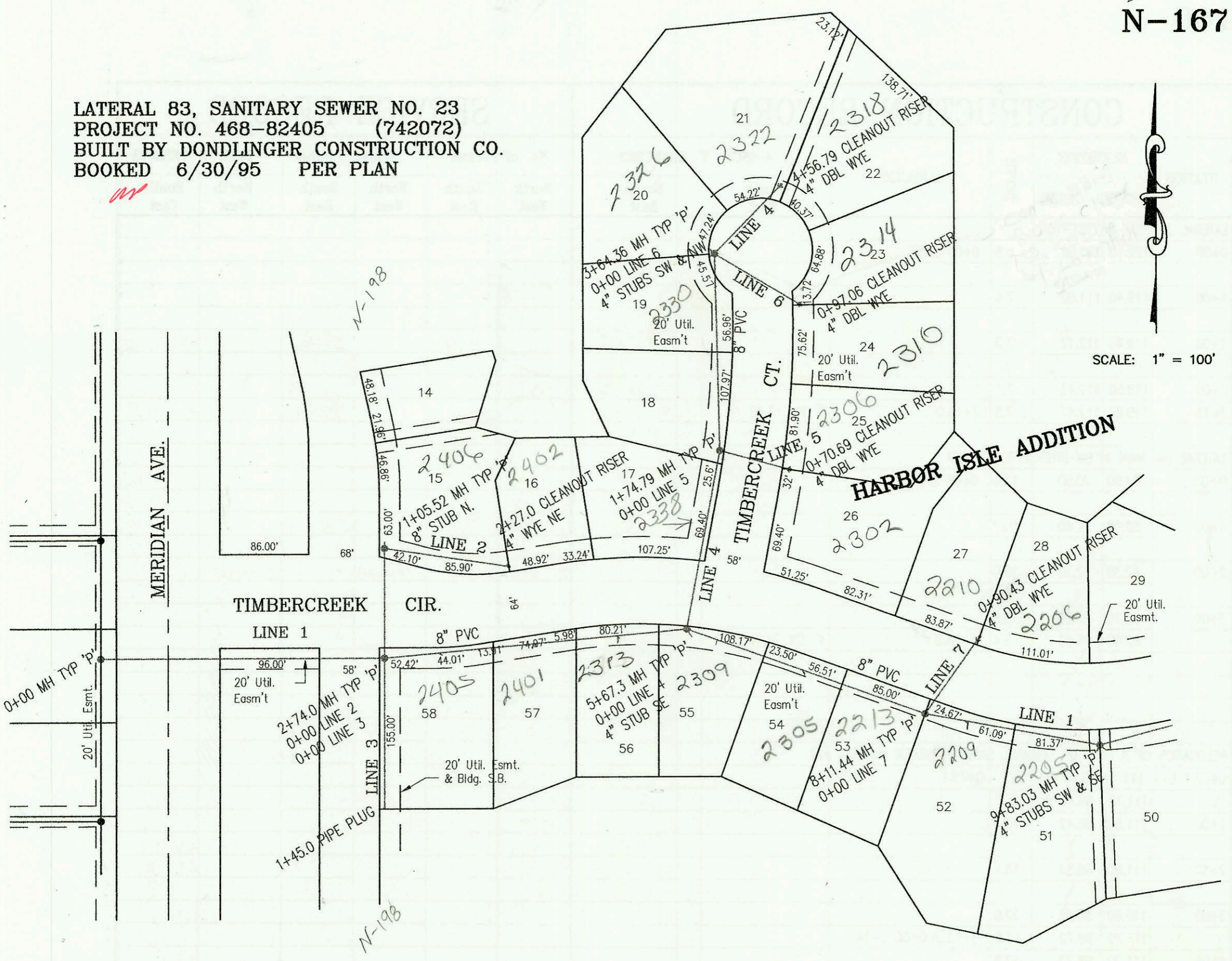


LATERAL 83, SANITARY SEWER NO. 23
PROJECT NO. 468-82405 (742072)
BUILT BY DONDLINGER CONSTRUCTION CO.
BOOKED 6/30/95 PER PLAN



SCALE: 1" = 100'



CONSTRUCTION RECORD						SERVICE RECORD								
STATION	ELEVATION		DEPTH	MANHOLE	4-INCH "Y" BRANCHES		No. of Permit		House Number		DATE OF PERMITS			
	GROUND	GRADE			North West	South East	North West	South East	North West	South East	North West	South East		
L-1	LATERAL 83, SANITARY SEWER NO. 23													
0+00 L-1	139.60	125.11 out	14.5	0+00										
	139.60	125.31 in	14.3											
1+00	141.40	125.61	15.8											
2+00	142.00	125.91	16.1											
	142.00	126.13 out	15.9	2+74.0 = 0+00 L-2										
	142.00	127.13 in	14.9	2+74.0 = 0+00 L-3										
3+00	142.00	127.73	14.3											
						3+24 4" S 138.40		97-14207	2405	Timber Creek		8-13-97		
4+00	143.30	127.63	15.7			4+19 4" S 139.50		97-39087	2401	Timber Creek		3-11-97		
						4+99 4" S 139.90		96-194987	2313	Timber Creek		11-20-96		
5+00	143.90	128.03	15.9			4" SE 130.30		95-107417	2309	Timber Creek		7-11-95		
	144.00	128.30 out	15.7	5+67.3 = 0+00 L-4										
	144.00	128.41 in	15.6											
6+00	143.60	128.54	15.1			6+00 4" S 139.65			2305	Timber Creek		7-11-95		
						6+86 4" S 139.50		95-107427						
7+00	143.50	128.94	14.6			7+65 4" S 139.50		95-138817	2313	Timber Creek		8-30-95		
8+00	143.50	129.34	14.2											
	143.70	129.39 out	14.3	8+11.44 = 0+00 L-7										
	143.70	129.49 in	14.2											
9+00	143.10	129.84	13.3			8+55 4" S 139.25		95-98507	2209	Timber Creek		6-20-95		
	143.10	130.18 out	12.9	9+83.03	4" SW 132.18	4" SE 132.18		97-157347	2405	Timber Creek	9-3-97	7-25-96		
	143.10	130.28 in	12.8						2203	Timber Creek				
10+00	142.90	130.34	12.6											
11+00	143.50	130.74	12.8											
	144.20	130.94 out	13.3	11+48.37 = 0+00 L-8	4" SW 135.00	4" SE 135.00		98-206917	2115	Timber Creek	10-21-98			
	144.20	131.04 in	13.2			11+68-4 4" S		96-204487	2109	Timber Creek		12-3-96		
12+00	143.70	131.24	12.5			12+77 4" S 139.49		97-157317	2105	Timber Creek		7-2-97		
13+00	143.40	131.64	11.8											
	143.50	131.91 out	11.6	13+65.54 = 0+00 L-9		13+83 6 4" S		97-112087	2011	Timber Creek		7-8-97		
	143.50	132.84 in	10.7											
14+00	143.00	132.98	10.0											
15+00	142.50	133.38	9.1											
	142.50	133.58 out	8.9	15+51.12 = 0+00 L-12				98-132417	2052	Timber Creek	7-21-98	5-24-96		
	142.50	133.68 in	8.8					96-79987	2003	Timber Creek				
16+00	142.00	133.88	8.1											
16+30.41	141.90	134.00	7.9			4" DB WYE								
L-2	0+00 L-2	142.00	128.13	13.9	0+00 = 2+74.0 L-1									
1+00		142.00	131.50 out	10.5	1+05.52	8" N 131.50		2500-00163	2105	Timber Creek		1-19-2000		
		142.00	133.50 in	8.5										
2+00	142.40	133.88	8.5											
2+27.0	142.60	133.98	8.6	2+27 C.O.	4" WYE NE			98-112207	2402	Timber Creek		6-24-98		
L-3	0+00 L-3	142.00	126.23	15.8	0+00 = 2+74.0 L-1									
1+00	141.40	126.53	14.9											
1+45.0	141.20	126.67	14.5	PLUG										
L-4	0+00 L-4	144.00	130.30	13.7	0+00 = 5+57.3 L-1									
						4" SCH 40 1+69.19		97-00914	2338	Timber Creek		10-14-99		
1+00	143.80	131.66	12.1											
	144.00	132.67 out	11.3	1+74.79 = 0+00 L-5										
	144.00	132.77 in	11.2											
2+00	143.80	132.87	10.9											
3+00	143.30	133.27	10.0											
	142.60	133.53 out	9.1	3+64.36 = 0+00 L-6	4" NW 133.86	4" SW 133.86		97	2326	Timber Creek				
	142.60	133.63 in	9.0											
4+00	141.80	133.77	8.0											
4+56.79	142.90	134.00	8.9			4" DB WYE		98-228977	2318	Timber Creek		1-30-98		
L-5	0+00 L-5	144.00	134.72	9.3	0+00 = 1+74.79 L-4									
0+70.69	143.70	135.00	8.7			4" DB WYE	4" WYE 4" SCH 40	97-0182	2330	Timber Creek	2302	Timber Creek	4-30-98	
L-6	0+00 L-6	142.60	134.11	8.5	0+00 = 3+64.36 L-4									
0+97.06	143.20	134.50	8.7			4" DB WYE	4" WYE 4" SCH 40	97-143227	96-195057	2314	Timber Creek	2310	Timber Creek	8-18-97
L-7	0+00 L-7	143.70	131.39	12.3	0+00 = 8+11.44 L-1									
0+90.43	143.10	134.50	8.6			4" DB WYE	4" SCH 40 4" WYE	96-146227	96-12817	2210	Timber Creek	2206	Timber Creek	8-20-96