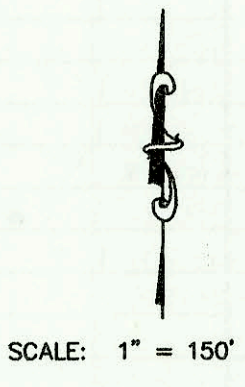
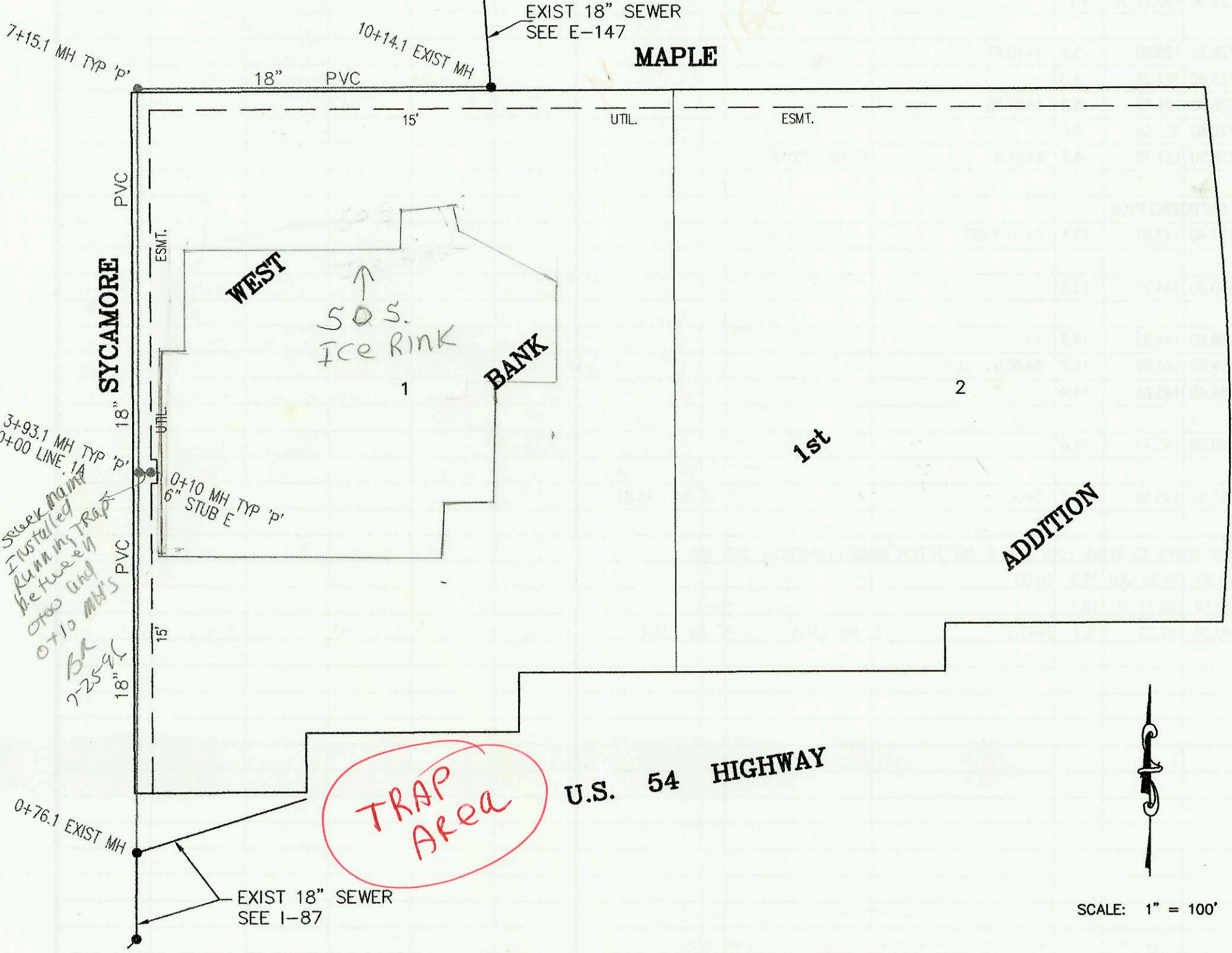
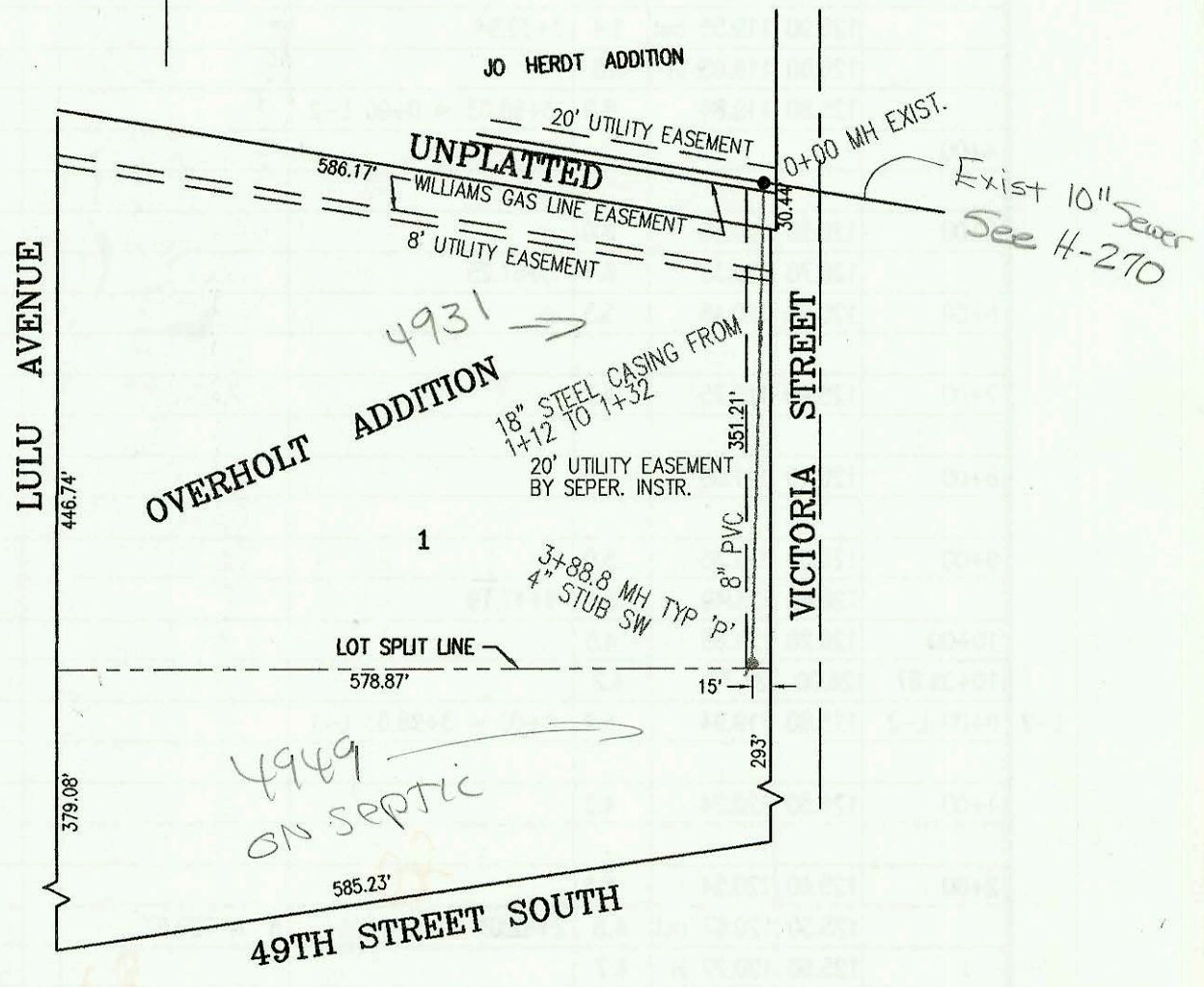


SCALE: 1" = 100'

LATERAL 337, SOUTHWEST INTERCEPTOR SEWER
PROJECT NO. 468-82398 (742007)
BUILT BY DULING CONSTRUCTION CO.
BOOKED 7/5/95 PER PLAN



LATERAL 84, MAIN 1, SOUTHWEST INTERCEPTOR SEWER
PROJECT NO. 468-82455 (742221)
BUILT BY W.B. CARTER CONSTRUCTION CO.
BOOKED 7/5/95 PER PLAN



RELOCATION OF A PORTION OF SUBMAIN, SANITARY SEWER DISTRICT NO. 21
PROJECT NO. 468-82454 (621037)
BUILT BY DONDLINGER CONSTRUCTION CO.
BOOKED 07/05/95 FROM AS BUILTS

MP

CONSTRUCTION RECORD						SERVICE RECORD						
STATION	ELEVATION		DEPTH	MANHOLE	4-INCH "Y" BRANCHES		No. of Permit		House Number		DATE OF PERMITS	
	GROUND	GRADE			North West	South East	North West	South East	North West	South East	North West	South East
LATERAL 337, SW INTERCEPTOR												
0+00	120.10	111.52	8.6	0+00 EXIST								
1+00	119.40	111.82	7.6									
2+00	119.40	112.12	7.3			4" SDR 35 2+15.0		2797	640 W 35th			3-28-95
3+00	119.50	112.42	7.1									
3+15	119.97	112.47	7.5	3+15.0	8" W 112.47	4" SDR 35 TAP INTO 8" STUB AT 3.5' W. of MTH		2855	6512 35th s.			7-6-95
LATERAL 84, MAIN 1, SW INTERCEPTOR SEWER												
0+00	83.90	70.50	13.4	0+00 EXIST								
1+00	82.10	71.40	10.7									
2+00	82.30	72.30	10.0			4" SDR 35 2+32.8		258407-1	4931 S. Victoria			6-7-95
3+00	82.10	73.20	8.9									
	82.40	74.00	8.4	3+88.8	4" SW 74.10							
RELOCATION OF A PART OF SUBMAIN, SANITARY SEWER DISTRICT #21												
L-1	0+76.1 L-1	111.10	98.40	OUT 12.7	0+76.1							
		111.10	98.40	IN 12.7								
1+00		111.50	98.42	13.1								
2+00		111.60	98.53	13.1								
3+00		110.60	98.63	12.0								
		111.70	98.72	13.0	3+93.3=0+00 L-1A							
4+00		111.20	98.73	12.5								
5+00		111.50	98.83	12.7								
6+00		111.30	98.94	12.4								
7+00		111.30	99.04	12.3								
		111.28	99.05	12.2								
8+00		111.70	99.14	12.6								
9+00		110.50	99.24	11.3								
10+00		110.00	99.35	10.7								
		110.10	99.36	10.7	10+14.1							
L-1A	0+00 L-1A	111.70	98.72	OUT 13.0	0+00=3+93.3 L-1							
		111.70	100.68	IN 11.0								
		111.70	101.18	10.5	0+10	6" E 103.18		96 120817	505 W Maple			7-25-96

* 505 W Maple - sewer main put running trap in 8" main between 0+00 and 0+10 MTH's because bldg line not trapped also 1,000 grease trap installed by D.L.