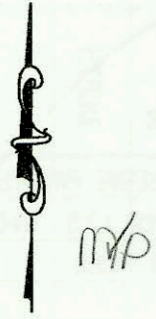
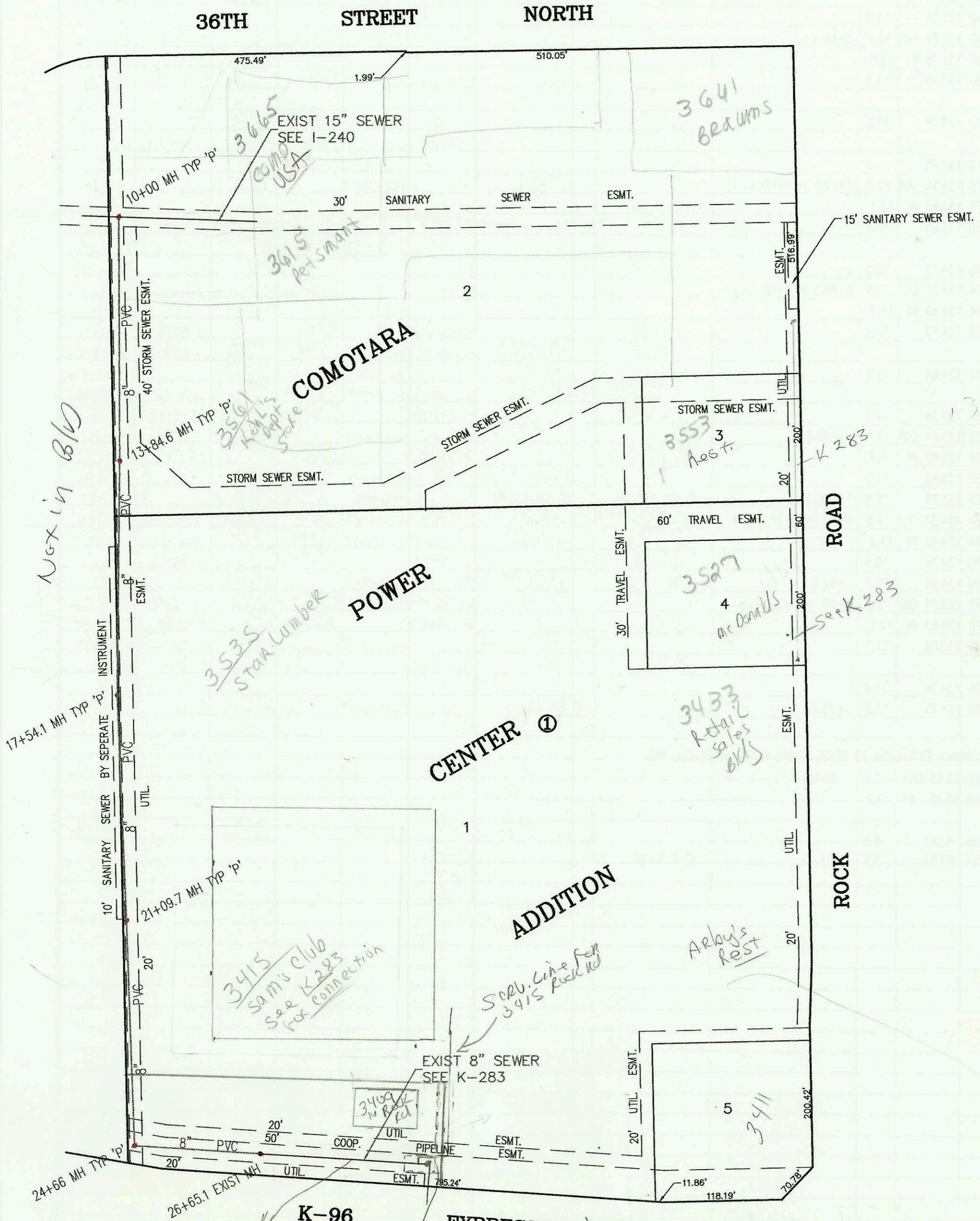


PRIVATE SANITARY SERWER TO SERVE COMOTARA POWER CENTER  
PRIVATE PROJECT NO. 356 PPS (607861)  
BUILT BY CRANE CONSTRUCTION CO.  
BOOKED 07/20/95 FROM AS BUILTS



SCALE: 1" = 150'



*Next in Bld*

*3535 STAIR LUMBER*

*3415 Sam's Club see K-283 for connection*

*SEWER LINE FOR 3415 Rock Rd*

*See K-283*

*Private Sewer ESMT. CHANGED TO 3415 N Rock Rd Film 2459 Page 445 6/5/02 see K-283*

*3641 Braums*

*3615 PetSmart*

*3553 Aest.*

*3527 Mc Donalds*

*3433 Retail sales Bldg*

*Arlo's Rest*

*3411*

**ROAD**

**ROCK**

**36TH STREET NORTH**

**POWER**

**CENTER**

**ADDITION**

**EXPRESSWAY**

**K-96**

15' SANITARY SEWER ESMT.

2

STORM SEWER ESMT.

3

60' TRAVEL ESMT.

4

1

ESMT.

UTIL.

UTIL.

UTIL.

UTIL.

UTIL.

UTIL.

UTIL.

UTIL.

UTIL.

UTIL.

UTIL.

UTIL.

UTIL.

UTIL.

UTIL.

UTIL.

UTIL.

UTIL.

UTIL.

UTIL.

UTIL.

UTIL.

UTIL.

UTIL.

UTIL.

UTIL.

UTIL.

UTIL.

UTIL.

UTIL.

UTIL.

UTIL.

UTIL.

UTIL.

UTIL.

UTIL.

UTIL.

UTIL.

UTIL.

UTIL.

UTIL.

UTIL.

UTIL.

UTIL.

UTIL.

UTIL.

UTIL.

UTIL.

UTIL.

UTIL.

UTIL.

UTIL.

UTIL.

UTIL.

UTIL.

UTIL.

UTIL.

UTIL.

UTIL.

UTIL.

UTIL.

UTIL.

UTIL.

UTIL.

UTIL.

UTIL.

UTIL.

UTIL.

UTIL.

UTIL.

UTIL.

UTIL.

UTIL.

UTIL.

UTIL.

UTIL.

UTIL.

UTIL.

UTIL.

UTIL.

UTIL.

UTIL.

UTIL.

UTIL.

UTIL.

UTIL.

UTIL.

UTIL.

UTIL.

UTIL.

UTIL.

UTIL.

UTIL.

UTIL.

UTIL.

UTIL.

UTIL.

UTIL.

UTIL.

UTIL.

UTIL.

UTIL.

UTIL.

UTIL.

UTIL.

UTIL.

UTIL.

UTIL.

UTIL.

UTIL.

UTIL.

UTIL.

UTIL.

UTIL.

UTIL.

UTIL.

UTIL.

UTIL.

UTIL.

UTIL.

UTIL.

UTIL.

UTIL.

UTIL.

UTIL.

UTIL.

UTIL.

UTIL.

UTIL.

UTIL.

UTIL.

UTIL.

UTIL.

UTIL.

UTIL.

UTIL.

UTIL.

UTIL.

UTIL.

UTIL.

UTIL.

UTIL.

UTIL.

UTIL.

UTIL.

UTIL.

UTIL.

UTIL.

UTIL.

UTIL.

UTIL.

UTIL.

UTIL.

UTIL.

UTIL.

UTIL.

UTIL.

UTIL.

UTIL.

UTIL.

UTIL.

UTIL.

UTIL.

UTIL.

UTIL.

UTIL.

UTIL.

UTIL.

UTIL.

UTIL.

UTIL.

UTIL.

UTIL.

UTIL.

UTIL.

UTIL.

UTIL.

UTIL.

UTIL.

UTIL.

UTIL.

UTIL.

UTIL.

UTIL.

UTIL.

UTIL.

UTIL.

UTIL.

UTIL.

UTIL.

UTIL.

UTIL.

UTIL.

UTIL.

UTIL.

UTIL.

UTIL.

UTIL.

UTIL.

UTIL.

UTIL.

UTIL.

UTIL.

UTIL.

UTIL.

UTIL.

UTIL.

UTIL.

UTIL.

UTIL.

UTIL.

UTIL.

UTIL.

UTIL.

UTIL.

UTIL.

UTIL.

UTIL.

UTIL.

UTIL.

UTIL.

UTIL.

UTIL.

UTIL.

UTIL.

UTIL.

UTIL.

UTIL.

UTIL.

UTIL.

UTIL.

UTIL.

UTIL.

UTIL.

UTIL.

| CONSTRUCTION RECORD   |           |            |       |         |                          | SERVICE RECORD |  |            |              |                         |                 |            |
|---|-----------|------------|-------|---------|--------------------------|----------------|--|------------|--------------|-------------------------|-----------------|------------|
| STATION   | ELEVATION |            | DEPTH | MANHOLE | 4-INCH "Y" BRANCHES      |                | No. of Permit                                  |            | House Number |                         | DATE OF PERMITS |            |
|   | GROUND    | GRADE      |       |         | North West               | South East     | North West                                     | South East | North West   | South East              | North West      | South East |
| PRIVATE SANITARY SEWER TO SERVE COMOTARA POWER CENTER                 |           |            |       |         |                          |                |  |            |              |                         |                 |            |
| 10+00   | 187.94    | 174.69 OUT | 13.3  | 10+00   |                          |                |  | 97-133237  |              | 3015 Rock Rd            |                 | 8-6-97     |
|   | 187.94    | 174.79 IN  | 13.2  |         |                          |                |  |            |              |                         |                 |            |
| 11+00   | 185.00    | 175.18     | 9.8   |         |                          |                |  |            |              |                         |                 |            |
| 12+00   | 187.00    | 175.57     | 11.4  |         |                          |                |  |            |              |                         |                 |            |
| 13+00   | 188.00    | 175.96     | 12.0  |         |                          |                |  |            |              |                         |                 |            |
|   | 188.99    | 176.29 OUT | 12.7  | 13+84.6 | 4" SDR35<br>13+25.6      |                |  | 95-143067  |              | 3561 Rock Rd            |                 | 9-13-95    |
| 14+00   | 188.00    | 177.25     | 10.8  |         |                          |                |  |            |              |                         |                 |            |
| 15+00   | 190.00    | 177.97     | 12.0  |         |                          |                |  |            |              |                         |                 |            |
| 16+00   | 192.00    | 178.69     | 13.3  |         |                          |                |  |            |              |                         |                 |            |
| 17+00   | 192.00    | 179.41     | 12.6  |         |                          |                |  |            |              |                         |                 |            |
|   | 191.95    | 179.80 OUT | 12.1  | 17+54.1 | 4" PVC 40<br>17+75.1 TAP |                |  | 98-110947  |              | 3535 of file<br>Rock Rd |                 | 6-22-98    |
|   | 191.95    | 181.55 IN  | 10.4  |         |                          |                |  | 94-5987    |              | 3535<br>to Rock Rd      | 1-14-94         |            |
| 18+00   | 193.00    | 181.72     | 11.3  |         |                          |                |  |            |              |                         |                 |            |
| 19+00   | 193.00    | 181.72     | 11.3  |         |                          |                |  |            |              |                         |                 |            |
| 20+00   | 194.00    | 182.48     | 11.5  |         |                          |                |  |            |              |                         |                 |            |
| 21+00   | 195.00    | 182.85     | 12.1  |         |                          |                |  |            |              |                         |                 |            |
|   | 195.14    | 182.89 OUT | 12.3  | 21+09.7 |                          |                |  |            |              |                         |                 |            |
|   | 195.14    | 183.26 IN  | 11.9  |         |                          |                |  |            |              |                         |                 |            |
| 22+00   | 196.00    | 183.59     | 12.4  |         |                          |                |  |            |              |                         |                 |            |
| 23+00   | 197.00    | 183.99     | 13.0  |         |                          |                |  |            |              |                         |                 |            |
| 24+00   | 197.00    | 184.39     | 12.6  |         |                          |                |  |            |              |                         |                 |            |
|   | 197.21    | 184.31 OUT | 12.9  | 24+66   |                          |                |  |            |              |                         |                 |            |
|   | 197.21    | 184.46 IN  | 12.8  |         |                          |                |  |            |              |                         |                 |            |
| 25+00   | 197.00    | 184.75     | 12.3  |         |                          |                |  |            |              |                         |                 |            |
| 26+00   | 198.00    | 185.59     | 12.4  |         |                          |                |  |            |              |                         |                 |            |
|   | 198.89    | 186.14 OUT | 12.8  | 26+65.1 |                          |                |  |            |              |                         |                 |            |
|   | 198.89    | 185.84 IN  | 13.1  |         |                          |                |  |            |              |                         |                 |            |
| 2001-02029-8115101-3475 N Rock Rd - J-Hawk P10g - (Grease Inter Only) |           |            |       |         |                          |                | 2x40 PVC, 2 ea, 4#45 Tied back to Bldg (Drain) |            |              |                         |                 |            |