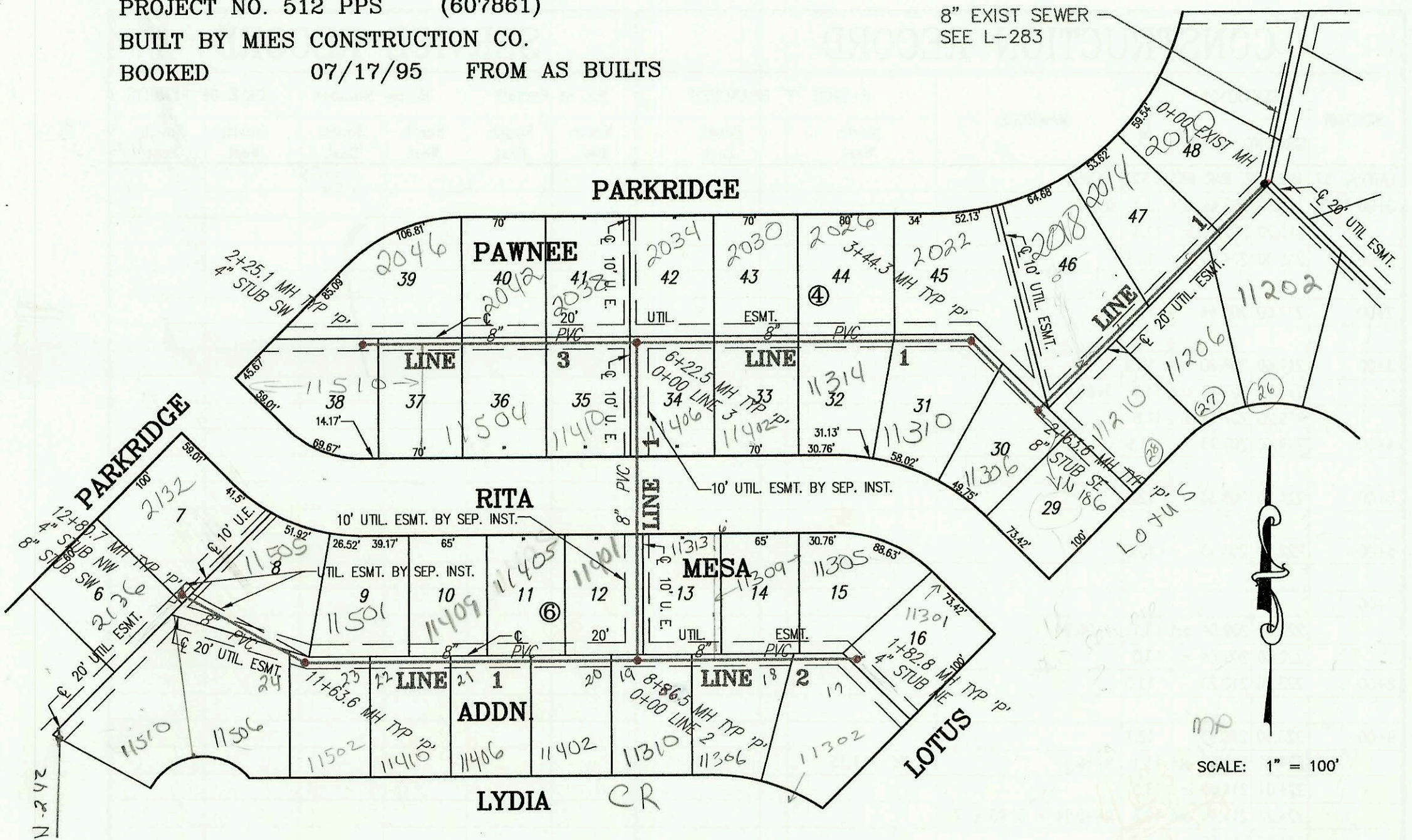
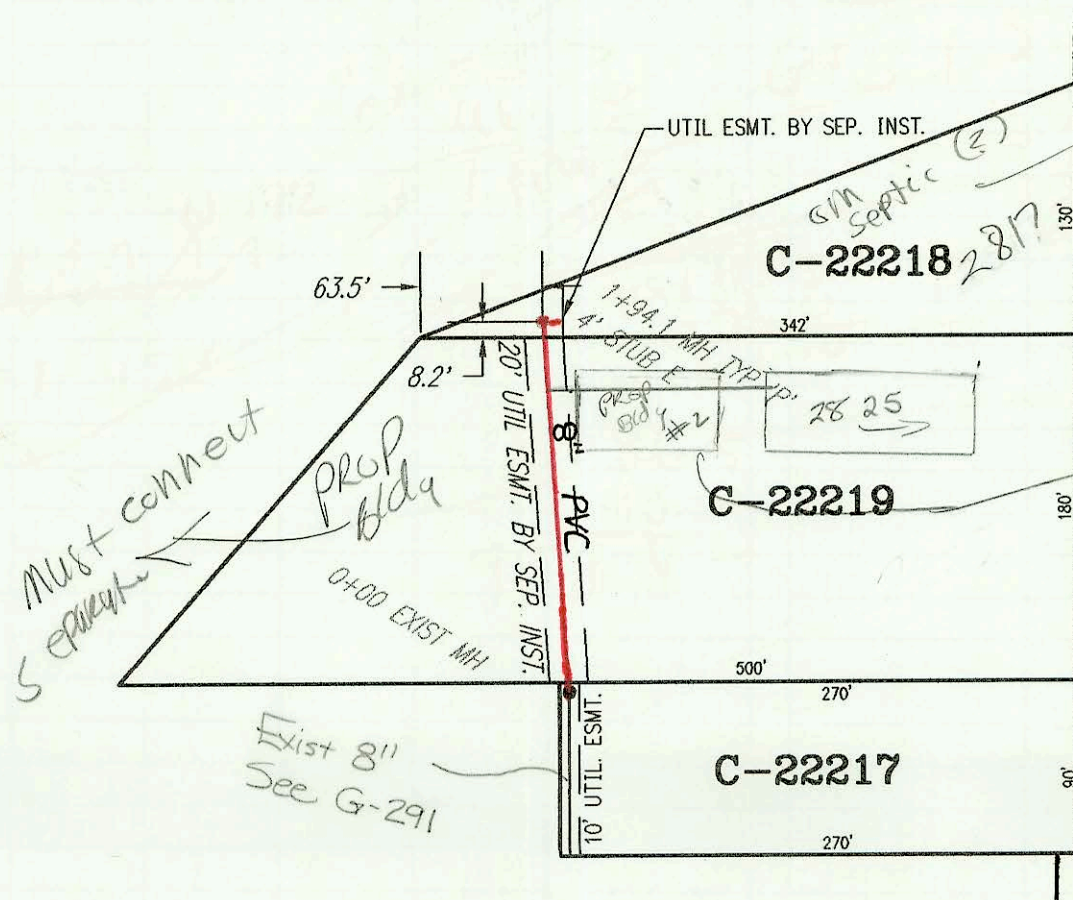
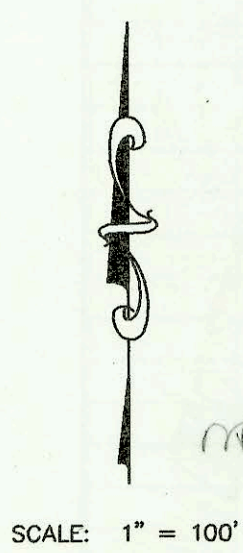


PRIVATE SANITARY SEWER TO SERVE PAWNEE MESA ADDITION- PHASE 2
PROJECT NO. 512 PPS (607861)
BUILT BY MIES CONSTRUCTION CO.
BOOKED 07/17/95 FROM AS BUILTS



PRIVATE SANITARY SEWER EXTENSION TO SERVE LIVING WORD OUTREACH, INC.
PROJECT NO. 476 PPS (607861)
BUILT BY MIES CONSTRUCTION CO.
BOOKED 08/30/95 FROM AS BUILTS



*2817 S Hillside
MS Record
in Tidemark
of this Bldg
connecting
since sewer made
available in 1995
BR*

*The Rear Bldg must
connect separate
to city main
BR
9/26/00*

*Advised by David
Lies Plumbing that
plbg for bldg #2
ties into exist.
sew line for
front bldg even
though there is
advised not
to exist since
was plumber
1-16-08*

CONSTRUCTION RECORD						SERVICE RECORD						
STATION	ELEVATION		DEPTH	MANHOLE	4-INCH "Y" BRANCHES		No. of Permit		House Number		DATE OF PERMITS	
	GROUND	GRADE			North West	South East	North West	South East	North West	South East	North West	South East
PRIVATE SANITARY SEWER TO SERVE PAWNEE MESA ADDITION- PHASE 2												
LINE 1 0+00 L-1	143.98	131.43 OUT	12.6	0+00	4" SDR 35 0+94.5		95-942-7		2014 Parkridge		6-5-95	
	143.98	131.43 IN	12.6				95-943-7		2014 Parkridge	11300 Rita	6-21-95	9-27-95
1+00	143.70	131.74	12.0		4" SDR 35 1+54.6			95-1657-7	11406 Rita			10-16-95
2+00	143.50	132.06	11.4		4" SDR 35 2+12.0		95-944-7	95-1526-7	2018 Parkridge	11810 Lynia	6-21-95	9-27-95
	144.10	132.26 OUT	11.8	2+63.6	8" SE 132.32 4" sch 40 2+77.2			95-2080-7		11306 Rita		1-22-95
3+00	143.60	132.56	11.0		4" SDR 35 3+60.3		95-11008-7	95-16782-7	2012 Parkridge	11310 Rita	7-14-95	10-19-95
	144.80	132.71 OUT	12.1	3+44.3	4" sch 40 3+74.3							
4+00	144.30	132.93	11.4		4" SDR 35 4+39.3		95-11009-7	95-16699-7	2016 Parkridge	11314 Rita	7-14-95	10-19-95
	144.80	132.78 IN	12.0		4" sch 40 4+60.3							
5+00	144.70	133.19	11.5		4" sch 40 5+06.5		95-11481-7	95-16700-7	2030 Parkridge	11492 Rita	7-14-95	10-19-95
	145.73	133.51 OUT	12.2	6+22.5 = 0+00 L-3	4" sch 40 5+76.5		95-11482-7		2034 Parkridge		7-14-95	10-19-95
6+00	145.73	133.63 IN	12.1		4" sch 40 6+51.1			95-16701-7		11406 Rita		10-14-95
	144.70	133.85	10.8									
8+00	144.60	134.13	10.5									
9+00	145.84	134.37 OUT	11.5	8+86.5 = 0+00 L-2								
	145.84	134.49 IN	11.3									
10+00	145.30	134.53	10.8		4" sch 40 9+19.5		96-507-6		11481 w Rita		1-10-96	
	145.80	134.84	11.0		4" sch 40 9+84.5		96-506-7	96-8261-7	11405 Rita	11462 Lydia	1-10-96	5-29-96
11+00	146.20	135.14	11.1		4" sch 40 10+61.5		96-508-7	96-8262-7	11909 Rita	11496 Lydia	1-10-96	6-21-96
	147.08	135.34 OUT	11.7	11+63.6	4" SDR 35 11+19.6		95-20175-7		11501 w Rita		12-7-95	
12+00	147.08	135.43 IN	11.7		4" SDR 35 12+13.6		95-20176-7	96-12655-7	11505 Rita	11502 Lydia	12-7-95	
	146.50	135.53	11.0		12+17.7 4" sch 40			96-17201-7		11506 Lydia		10-18-96
LINE 2 0+00 L-2	145.84	134.37 OUT	11.5	0+00 = 6+22.5 L-1	4" NW 136.18 0+21.0		96-737-7	96-12657-7	11313 w Rita	11315 Lydia	1-18-96	6-21-96
	145.84	134.49 IN	11.3		4" SW 135.88 0+10.0		96-736-7	96-12659-7	11304 w Rita	11306 Lydia	1-18-96	8-1-96
1+00	145.20	134.76	10.4		4" sch 40 1+45.8		96-734-7		11305 Rita		1-18-96	
	145.60	134.99	10.6	1+82.8	4" NE 135.39 1+59.8			96-12658-7		11302 Lydia		8-1-96
LINE 3 0+00 L-3	145.73	133.51 OUT	12.2	0+00 = 6+22.5 L-1	4" sch 40 0+31.0		95-14629-7	95-16763-7	2038 Parkridge	11410 Rita	9-12-95	10-19-95
	145.73	133.63 IN	12.1		4" sch 40 0+96.0		95-14627-7		2042 Parkridge		9-12-95	
1+00	145.70	133.99	11.7		4" sch 40 1+40.1			95-16704-7		11504 Rita		10-19-95
	146.20	134.36	11.8				95-14628-7		2046 Parkridge		9-12-95	
2+00	146.70	134.45	12.3	2+25.1	4" SW 134.78			95-14626-7		11510 Rita		9-12-95
	PRIVATE SANITARY SEWER EXTENSION TO SERVE LIVING WORD OUTREACH, INC.											
0+00	100.88	93.13 OUT	7.8	0+00								
	100.88	93.23 IN	7.7									
1+00	102.00	93.53	8.5		4" sch 40 1+58 TAP			95012207001		2825 SHILWIL		8/18/95
	101.50	93.91	7.6	1+94.1	4" E 94.26							