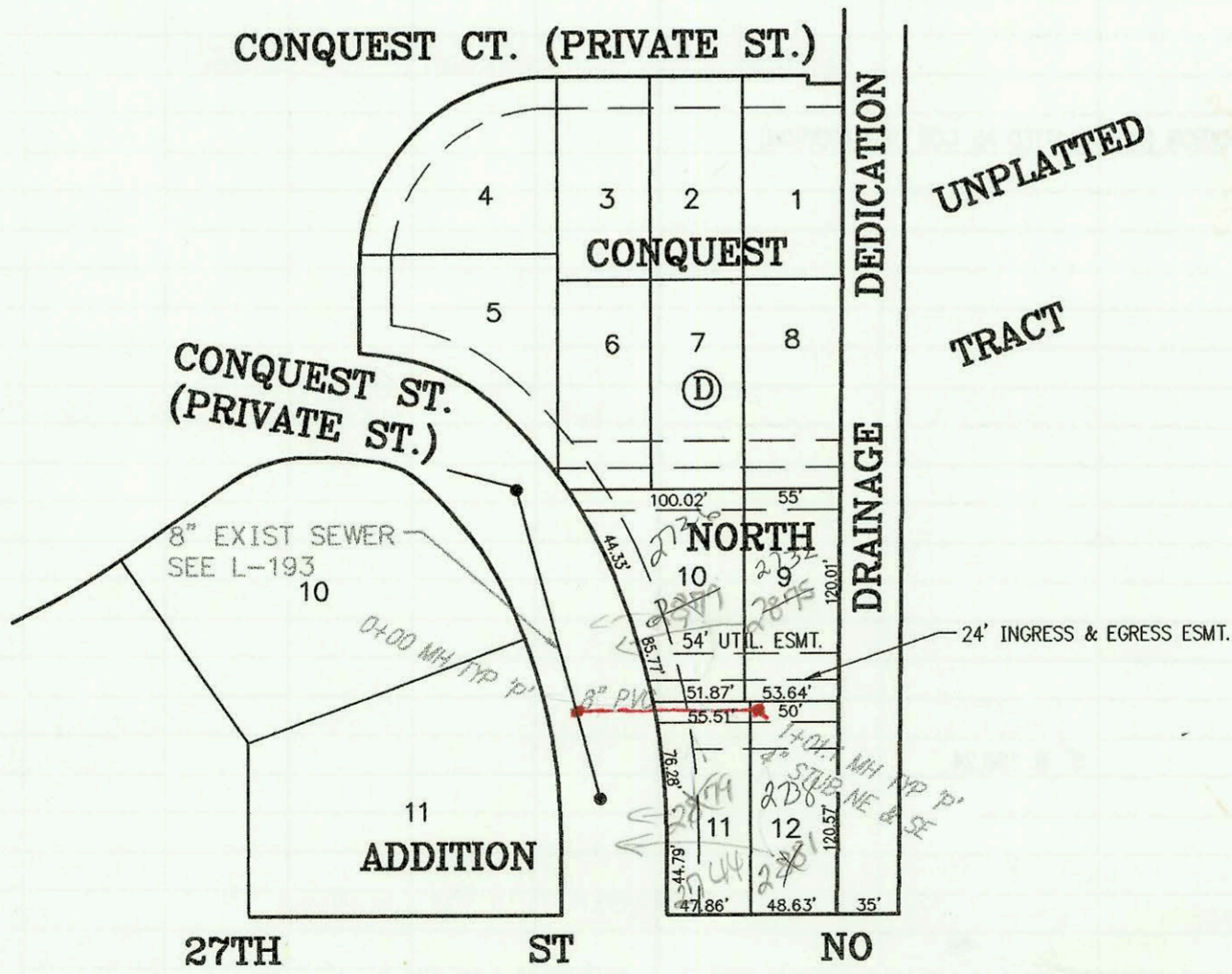


LATERAL 30, MAIN 1, WESTLINK INTERCEPTOR SEWER  
 PROJECT NO. 468-82474 (742270)  
 BUILT BY W. B. CARTER CONSTRUCTION CO.  
 BOOKED 8/31/95 PER PLAN



SCALE: 1" = 100'

PRIVATE SANITARY SEWER TO SERVE CONQUEST NORTH ADDITION  
 PRIV. PROJ. NO. 556 PPS (607861)  
 BUILT BY MCCULLOUGH EXCAVATING CO.  
 BOOKED 09/01/95 FROM AS BUILTS



SCALE: 1" = 100'

M/P

