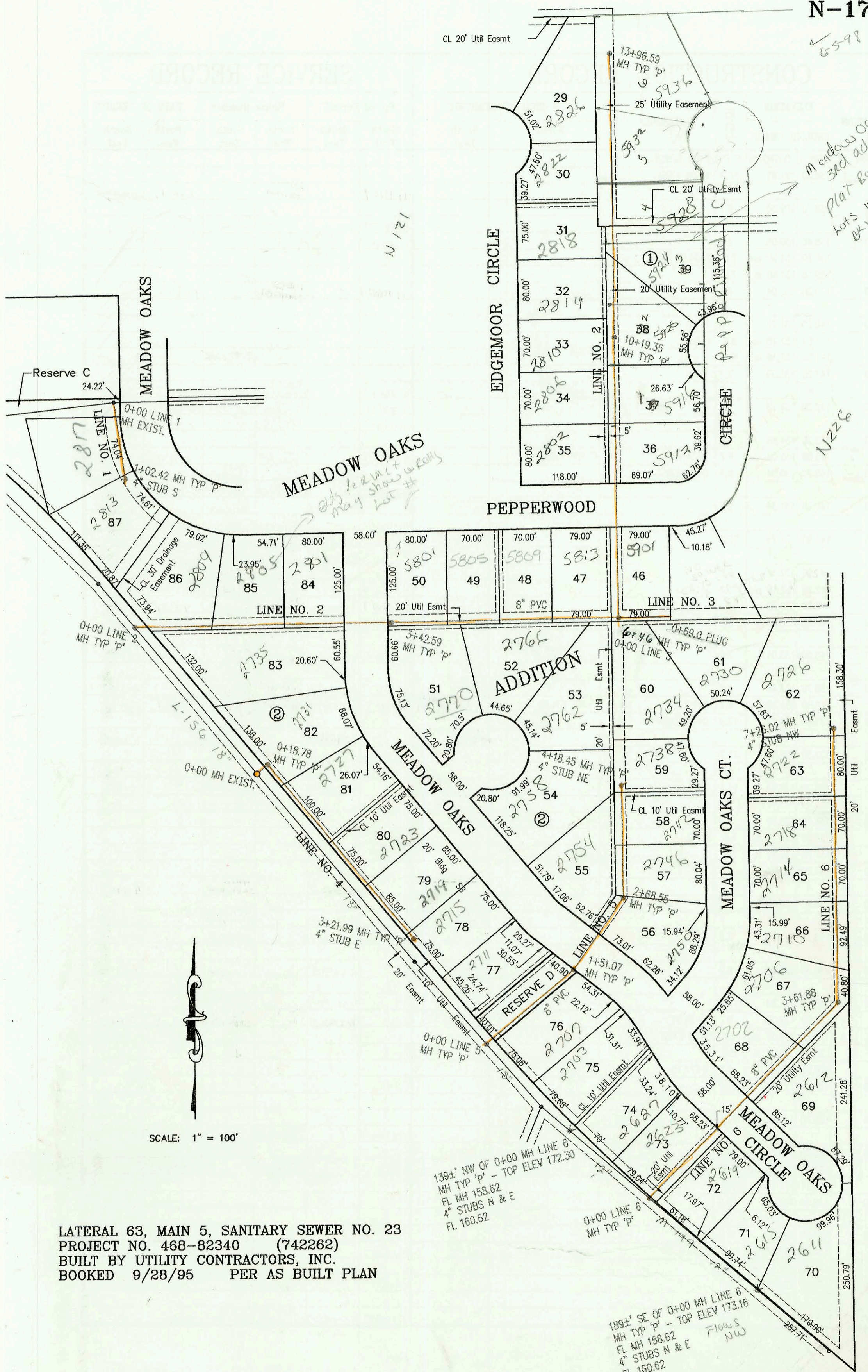


6598

Meadow Oaks
3rd add
Plat Book 1133
lots 1-6



SCALE: 1" = 100'

LATERAL 63, MAIN 5, SANITARY SEWER NO. 23
 PROJECT NO. 468-82340 (742262)
 BUILT BY UTILITY CONTRACTORS, INC.
 BOOKED 9/28/95 PER AS BUILT PLAN

139± NW OF 0+00 MH LINE 6
 MH TYP 'P' - TOP ELEV 172.30
 FL MH 158.62
 4" STUBS N & E
 FL 160.62

189± SE OF 0+00 MH LINE 6
 MH TYP 'P' - TOP ELEV 173.16
 FL MH 158.62
 4" STUBS N & E
 FL 160.62
 Flows NW

CONSTRUCTION RECORD						SERVICE RECORD						
STATION	ELEVATION		DEPTH	MANHOLE	4-INCH "Y" BRANCHES		No. of Permit		House Number		DATE OF PERMITS	
	GROUND	GRADE			North West	South East	North West	South East	North West	South East	North West	South East
LAT 63, MAIN 5, SS NO. 23												
LINE 1 0+00 L-1	171.74	161.09 out	10.7	0+00 EXIST								
	171.74	161.20 in	10.5		4" SDR 35 0+76.42		96-2777-7		2877 N Meadow Oaks			2-29-96
1+00												
	171.19	161.61	9.6	1+02.42		4" S 161.94 SDR 35		96-15586-1		2813 Meadow Oaks		9-18-96
LINE 2 0+00 L-2	166.26	155.02 out	11.2	0+00 EXIST								
	166.26	155.13 in	11.1				96-135018-7		2809 Meadow Oaks			9-14-96
1+00	168.50	157.19	11.3				96-8106-1		2805 Meadow Oaks			1-24-97
2+00	169.50	159.25	10.3						2801 Meadow Oaks			2-17-97
3+00	171.50	161.31	10.2									
	172.70	162.19	10.5	3+42.59		3+57.59 SDR 35	97-1320-7	96-2778-7	5801 F Pepperwood	2770 Meadow Oaks		1-24-97
4+00	172.70	162.42	10.3				98-9640-7		5805 Pepperwood			6-5-98
5+00	173.50	162.82	10.7			4" SDR 35 0+24.5 6+23.0	97-1802-1	96-1185-7	5804 Pepperwood	2766 Meadow Oaks		5-29-97
6+00	172.90	163.22	9.7						5813 Pepperwood	2767 Meadow Oaks		10-8-97
	172.98	163.41 out	9.6	6+46.59 = 0+00 L-3								12-19-95
	173.00	163.51 in	9.5									
7+00	173.10	163.72	9.4									
8+00	174.30	164.12	10.2			8+44.4 4" SCH 40		97-1082-7		5718 F Pepperwood		6-18-97
9+00	172.50	164.52	8.0			4" SDR 35 8+87.4		96-5068-7		2802 N Edgemore		4-8-96
10+00	173.00	164.92	8.1					97-1387-7	98-9619-7	2806 Edgemore	5916 Pepperwood	1-24-97
	173.30	165.00 out	8.3	10+19.36				98-9861-7		5925 Pepperwood		6-5-98
	173.30	165.10 in	8.2				96-1702-1		2810 Edgemore			7-09-96
11+00	173.50	165.72	7.8			4" SDR 35 11+09.3 4" SDR 35 11+41.9		95-1901-7		2814 Edgemore		11-8-95
12+00	174.10	166.49	7.6				96-9847-7	97-1633-7	2818 Edgemore	5928 Pepperwood		5-17-96
13+00	174.70	167.26	7.4			4" SDR 35 13+69.57		97-2096-7	98-220 Edgemore	5982 Pepperwood		11-24-97
	175.68	168.00	7.7	13+96.59			96-2791-7	98-701-7	2820 Edgemore	5936 Pepperwood		2-24-96
LINE 3 0+00 L-3	173.00	163.41	9.6	0+00 = 6+46.59 L-2		4" SDR 35 0+18.0		96-11076-7		2734 Meadow Oaks		7-2-96
0+69	173.10	163.69	9.4	PLUG		4" SCH 40 0+28.6		2000- 0207-0	95-19518-7	5901 Pepperwood	2730 N Meadow Oaks	1-11-2000
LINE 4 0+00 L-4	168.56	155.98 out	12.6	0+00 EXIST								
	168.56	156.08 in	12.5									
	169.32	159.40 out	9.9	0+18.78		4" SDR 35 0+27.7		96-8351-7		2731 Meadow Oaks		6-3-96
	169.32	159.50 in	9.8			4" SDR 35 0+90.7		96-8085-7		2737 Meadow Oaks		12-19-95
1+00	169.50	160.57	8.9									
2+00	170.30	161.89	8.4			4" SDR 35 2+11.2 4" SDR 35 2+50.3		96-5064-7		2723 Meadow Oaks		4-8-96
3+00	170.40	163.21	7.2					95-20642-7		2719 Meadow Oaks		12-19-95
LINE 5 0+00 L-5	170.79	163.50	7.3	3+21.99		4" E 163.83 SDR 35		96-7541-7		2715 Meadow Oaks		5-17-96
1+00	170.60	157.65 out	13.0	0+00		4" SDR 35 0+54.1		96-11947-7	96-19664-1	2711 Meadow Oaks	2707 Meadow Oaks	7-24-96
	170.60	157.75 in	12.9									11-19-96
	172.96	163.40 out	9.6	1+51.07								
	172.96	163.50 in	9.5									
2+00	172.00	163.74	8.3			4" SDR 35 2+37.9		96-19672-7	96-6125-7	2754 Meadow Oaks	2750 N Meadow Oaks	11-19-96
	171.27	164.09 out	7.2	2+68.55								4-19-96
	171.27	164.19 in	7.1					97		2746 Meadow Oaks		2-17-97
3+00	171.00	164.35	6.6					97-1322-7		2742 Meadow Oaks		1-24-97
4+00	171.40	164.85	6.5									
	171.63	164.94	6.7	4+18.45		4" SCH 40 4" SDR 35 165.87	97-3307-7	97-6944-7	2758 Meadow Oaks	2738 Meadow Oaks		3-7-97
LINE 6 0+00 L-6	173.10	159.72 out	13.4	0+00								
	173.10	159.82 in	13.3					96-11908-7	96-17000-7	2623 Meadow Oaks	2619 Meadow Oaks	7-19-96
1+00	172.80	161.37	11.4									10-9-96
2+00	173.40	162.92	10.5									
3+00	174.30	164.47	9.8			2+67.8 4" SCH 40		97-8488-7	96-11900-7	2727 Meadow Oaks	2612 Meadow Oaks	5-28-97
	176.42	165.43 out	11.0	3+61.88		4" SDR 35 2+59.8		97-6093-7		2706 Meadow Oaks		4-17-97
	176.42	165.54 in	10.9			3+83.8 4" SCH 40						
4+00	176.60	165.69	10.9					98-7126-7		2710 Meadow Oaks		4-20-98

96-1824-7 4-8-96 2615 Meadow Oaks CR - N/C - Tied to Mbl Sta 6 - 4" SDR 35
 96-11914-7 7-19-96 2627 Meadow Oaks - M+H Stub Conn - 4" SDR 35
 97-1319-7 1-24-97 2703 Meadow Oaks -
 97-1319-7 1-24-97 2611 Meadow Oaks -
 97-3306-7 3-7-97 2703 Meadow Oaks -