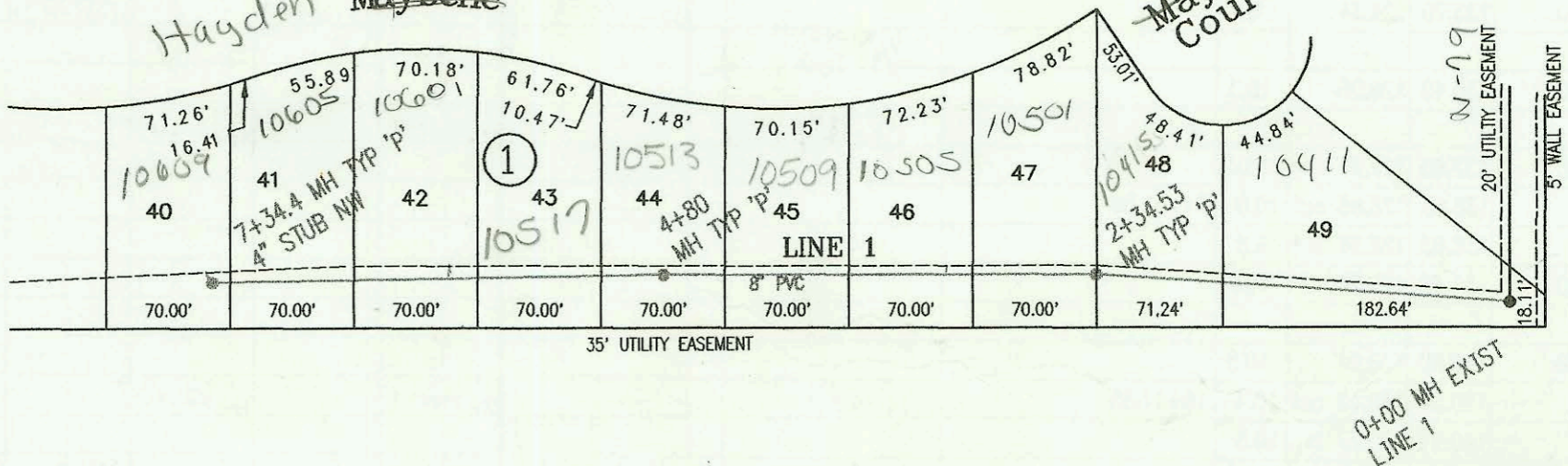
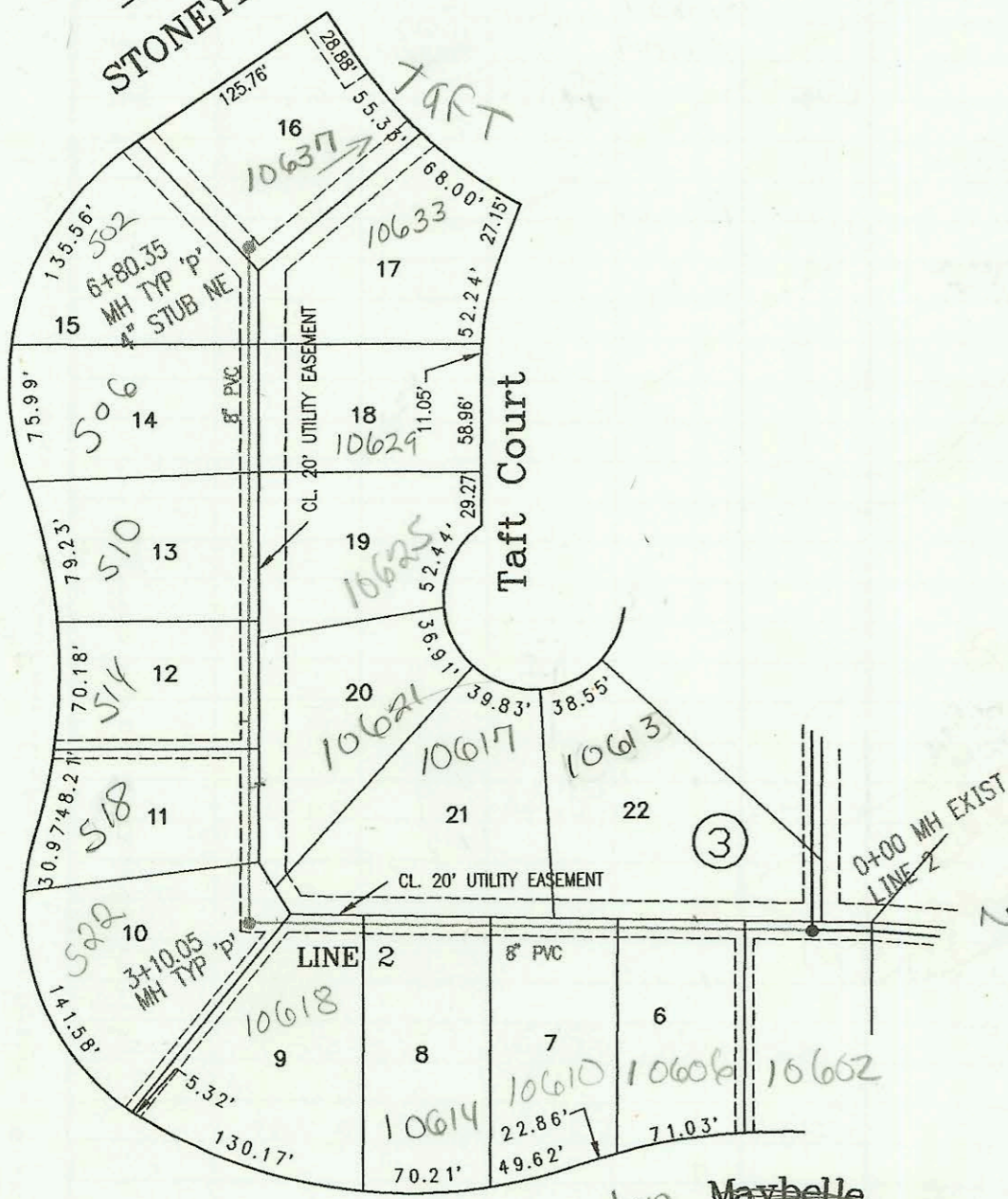


LATERAL 19, MAIN 1, COWSKIN INTERCEPTOR SEWER
 PROJECT NO. 468-82260 (742031)
 BUILT BY NOWAK CONSTRUCTION CO.
 BOOKED 10/2/95 PER AS BUILT PLAN



CONSTRUCTION RECORD						SERVICE RECORD						
STATION	ELEVATION		DEPTH	MANHOLE	4-INCH "Y" BRANCHES		No. of Permit		House Number		DATE OF PERMITS	
	GROUND	GRADE			North West	South East	North West	South East	North West	South East	North West	South East
LATERAL 19, MAIN 1, COSWSKIN				INTERCEPTOR SEWER								
0+00 L-1	138.00	127.81	10.2	0+00 EXIST								
1+00	138.10	129.38	8.7				97-1324-7		10411 Hayden		1-24-97	
2+00	138.40	130.96	7.4				98-1842-1		10541 Hayden		2-2-98	
	139.10	131.50 out	7.6	2+34.53			97-15384-7		10415 Hayden		9-2-97	
	139.10	131.60 in	7.5									
3+00	139.30	132.04	7.3		3+20.5 4" SCH 40		97-10842-7		10825 Hayden		10-18-97	
4+00	140.20	132.72	7.5									
	141.50	133.26 out	8.2	4+80	4" SDR 35 4+63.0		96-9203-7		10513 W Hayden		6-11-96	
	141.50	133.36 in	8.1									
5+00	141.20	133.50	7.7									
					4" SDR 35 5+58.5		95-12637-7		10517 Hayden		8-10-95	
6+00	142.30	134.18	8.1		5+99.4 4" SDR 35		96-13828-7		10691 Hayden		8-14-96	
							98-1320-7		10605 Hayden		1-3-98	
7+00	143.20	134.86	8.3									
	143.80	135.09	8.7	7+34.4	4" NW 135.42		98-3073-7		10609 Hayden		2-19-98	
0+00 L-2	140.30	130.94	9.4	0+00 EXIST								
					4" SDR 35 0+63.0		95-12629-7	97-	10613 W Taft	10602 Hayden	8-10-95	2-17-97
1+00	140.90	131.34	9.6		4" SDR 35 1+13.0		95-11464-7		10610 Hayden	10600 Hayden	8-10-95	2-17-97
					4" SDR 35 1+87.0		96-5066-7		10611 W Taft	10610 Hayden	4-8-96	11-27-95
2+00	141.90	131.74	10.2				95-13879-7		10614 Hayden	10618 Hayden	8-30-95	12-19-95
							95-20797-7					
3+00	141.90	132.14	9.8									
	142.20	132.18 out	10.0	3+10.05	4" SDR 35 3+14.1		95-16659-7		582 S Stoney Point	10021 W Taft	10-17-95	
	142.20	132.28 in	9.9				97-13640-7	96-10146-7	514 S Stoney Point		7-31-97	7-2-96
4+00	141.10	132.64	8.5		4+20.1 4" SDR 35		96-15887-7		514 S Stoney Point		9-18-96	
5+00	140.00	133.04	7.0		4" SDR 35 4+91.3		96-982-7	97-	510 S Stoney Point	10625 Taft	1-25-96	2-17-97
							96-3625-7		10629 W Taft		3-14-96	
6+00	139.70	133.44	6.3		4" SDR 35 5+73.35 tap 4" SDR 35 6+48.6		97-13673-7	96-10740-7	506 Stoney Point	10633 W Taft	7-31-97	7-2-96
	139.90	133.76	6.1	6+80.35	4" SDR 35 5+67.4	4" NE 134.09	97-4069-7	96-5067-7	502 S Stoney Point	10637 R Taft	3-18-97	7-2-96
0+00 L-3	137.00	124.04	13.0	0+00 EXIST								
					4" SDR 35 0+93.0		95-19463-7		410 S Stoney Point			11-27-95
1+00	137.30	125.59	11.7									
2+00	138.20	127.14	11.1		2+00.0 4" SCH 40		97-10346-7		414 S Stoney Point		6-18-97	
3+00	138.10	128.69	9.4									
	137.70	130.10 out	7.6	3+90								
	137.70	130.20 in	7.5									
4+00	137.20	130.24	7.0									
5+00	136.90	130.64	6.3									
					4" SDR 35 5+58.5		96-3065-7		417 S Stoney Point		4-29-96	
6+00	138.30	131.04	7.3		4" SDR 35 6+10.8		95-16655-7		421 S Stoney Point		10-17-95	
7+00	138.30	131.44	6.9		4" SDR 35 7+00.8		95-15124-7		425 S Stoney Point		9-27-95	
8+00	138.30	131.84	6.5									
	138.70	132.00	6.7	8+38.84	3" SDR 35 8+13.84 tap 4" SE 132.33 4" SDR 35		96-2720-7		433 Stoney Point		2-29-96	
0+00 L-4	125.24	109.67 out	15.6	0+00 EXIST			96-13826-7		437 S Stoney Point		8-14-96	
	125.24	117.23 in	8.0									
	126.22	117.37	8.8	0+77.75								
1+00	128.70	117.60	11.1									
2+00	129.70	118.63	11.1		4" SCH 40 2+75.8		95-12026-7		606 S Hidden Valley		8-22-95	
3+00	130.00	119.67	10.3									
	132.11	120.38 out	11.7	3+68.8	4" SDR 35 3+58.8		95-21784-7		626 Hidden Valley		12-19-95	
	132.11	121.12 in	11.0									
4+00	132.00	121.41	10.6									
5+00	133.60	122.33	11.3									
	134.40	122.78 out	11.6	5+48.6	4" SCH 40 5+93.2		95-12050-7		609 S Hidden Valley		8-1-95	
	134.40	122.84 in	11.6									
6+00	135.10	123.05	12.1									
7+00	135.00	123.47	11.5		4" SCH 40 7+69.7	4" SDR 35 7+63.6	95-12010-7	95-12612-7	566 S Hidden Valley	525 S Stoney Point	8-1-95	8-10-95

CONT. ON N-181

510 SWR 2001-00995-4/25/01-10637 W Taft - Mies Const - 3/0 in MH stubbed N
 Reconnect SWR 2001-00442-2/28/01-10637 W Taft - Mies Const - 4" DLTAP 6' SE OF MH 6+80.3(6+74.3) 4" SCH 40 - Relocated
 Connection to Main - Replaced entire line - ITWIN CO, 1H22, 2H45