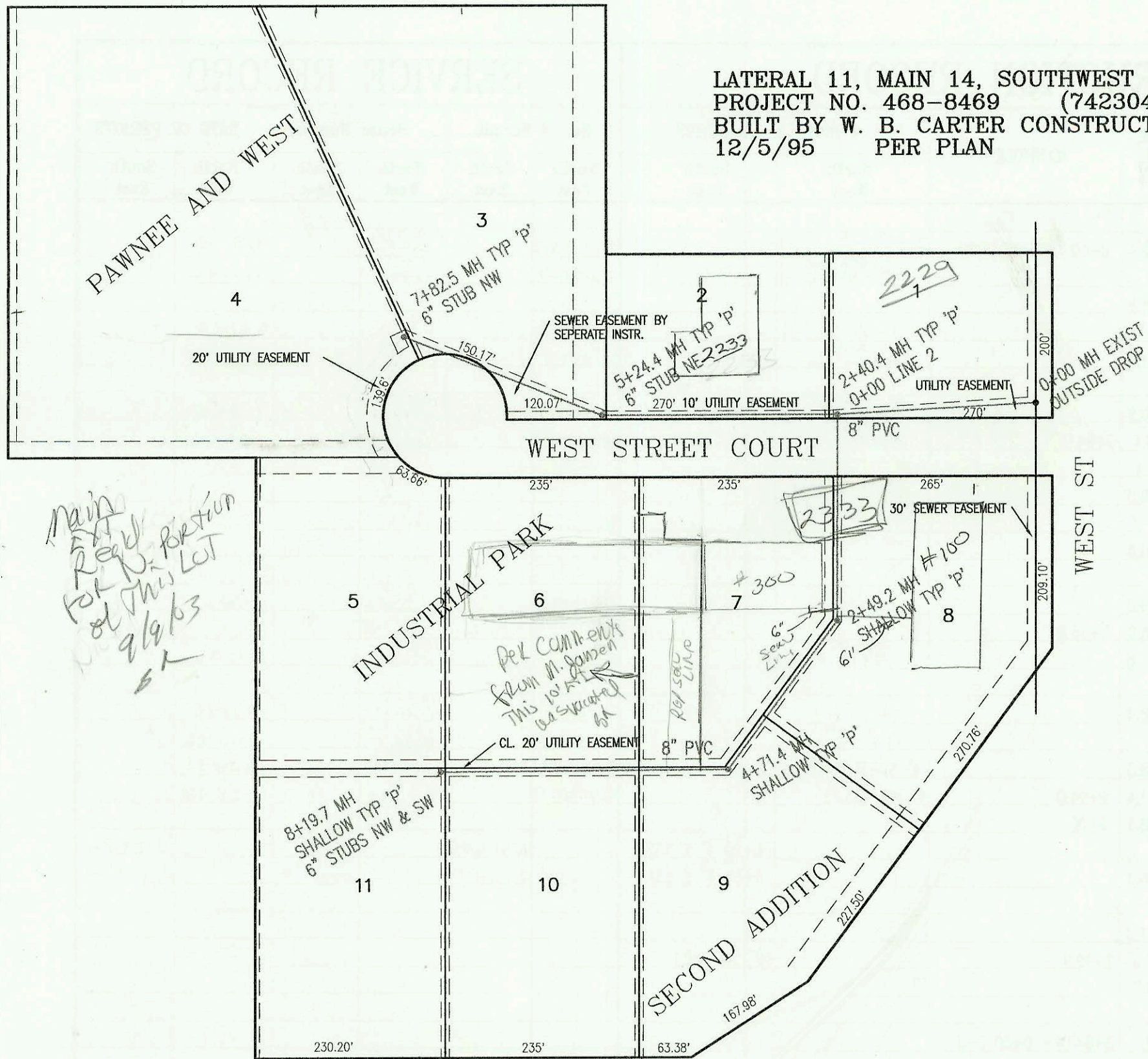
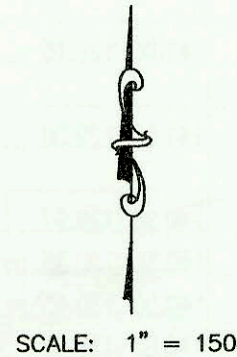


LATERAL 11, MAIN 14, SOUTHWEST INTERCEPTOR SEWER  
 PROJECT NO. 468-8469 (742304)  
 BUILT BY W. B. CARTER CONSTRUCTION CO.  
 12/5/95 PER PLAN

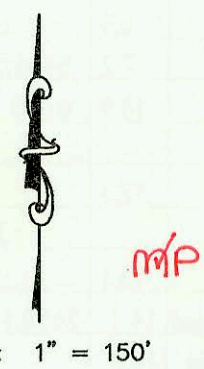
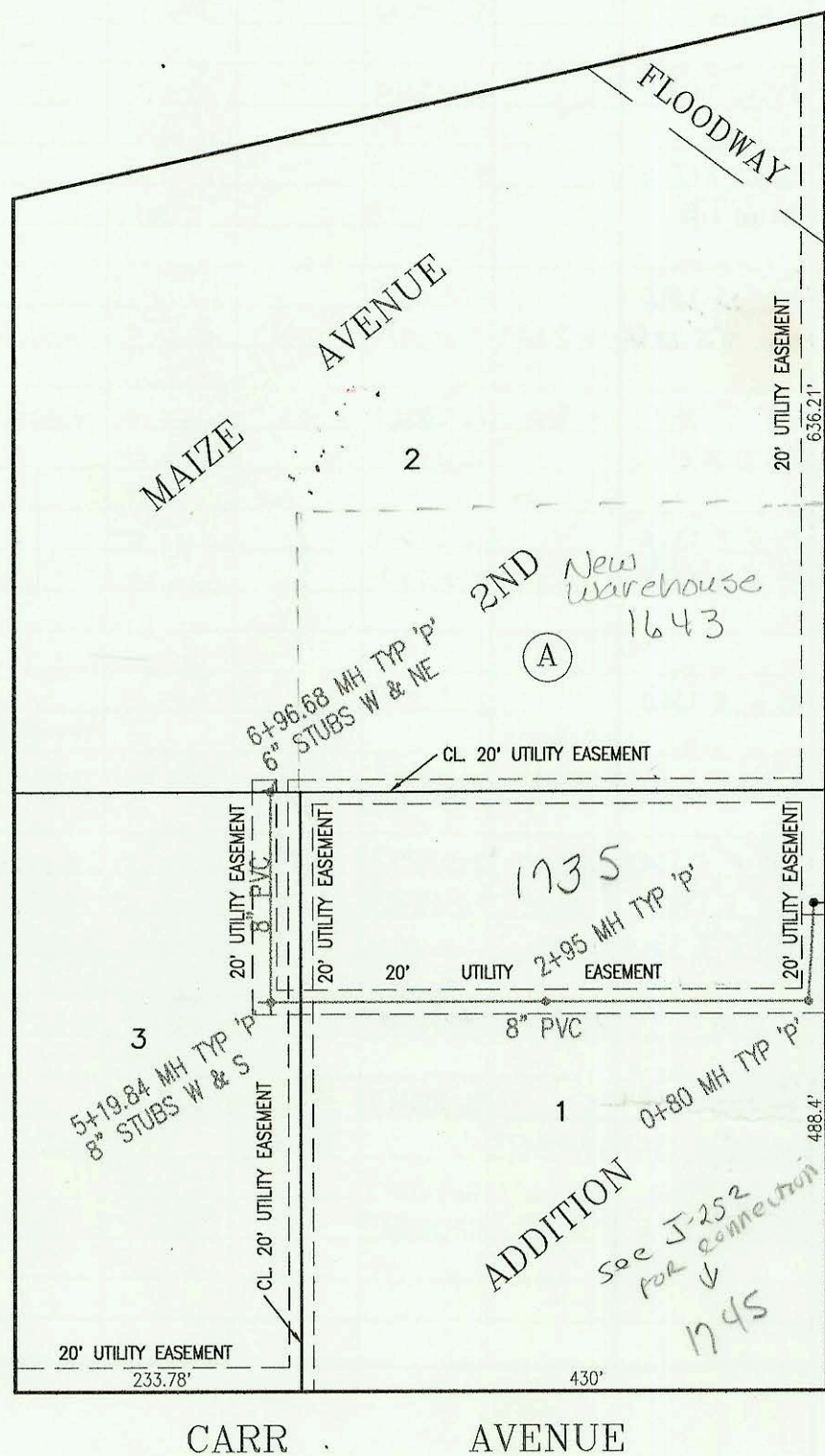


*Main 14  
 Reg'd  
 for this location  
 of this lot  
 2/19/03  
 SK*

*Per comment  
 from M. Gannon  
 this is not  
 to be separated  
 at  
 key sewer  
 line*



SANITARY SEWER EXTENSION TO SERVE LOTS 1-3, MAIZE AVENUE 2ND ADDITION  
 PRIVATE PROJECT NO. 562PPS (607861)  
 BUILT BY MIES CONSTRUCTION CO.  
 BOOKED 12/5/95 FROM AS BUILTS



Note: Data for this sewer is on Page N-191.

*EXIST 8\"/>*

