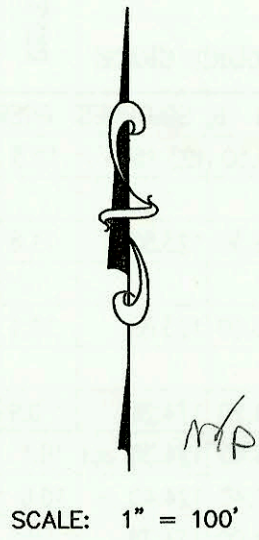
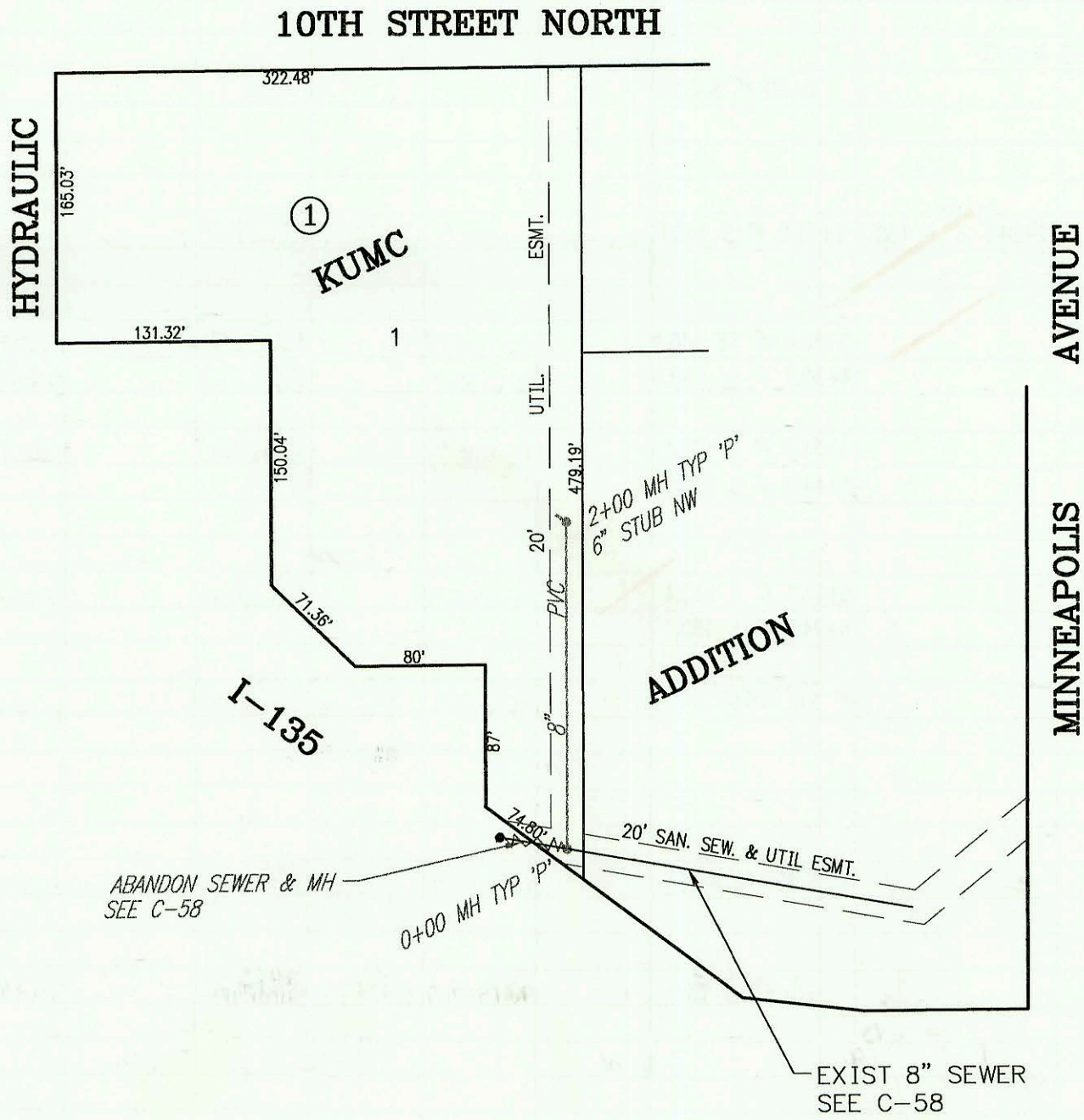
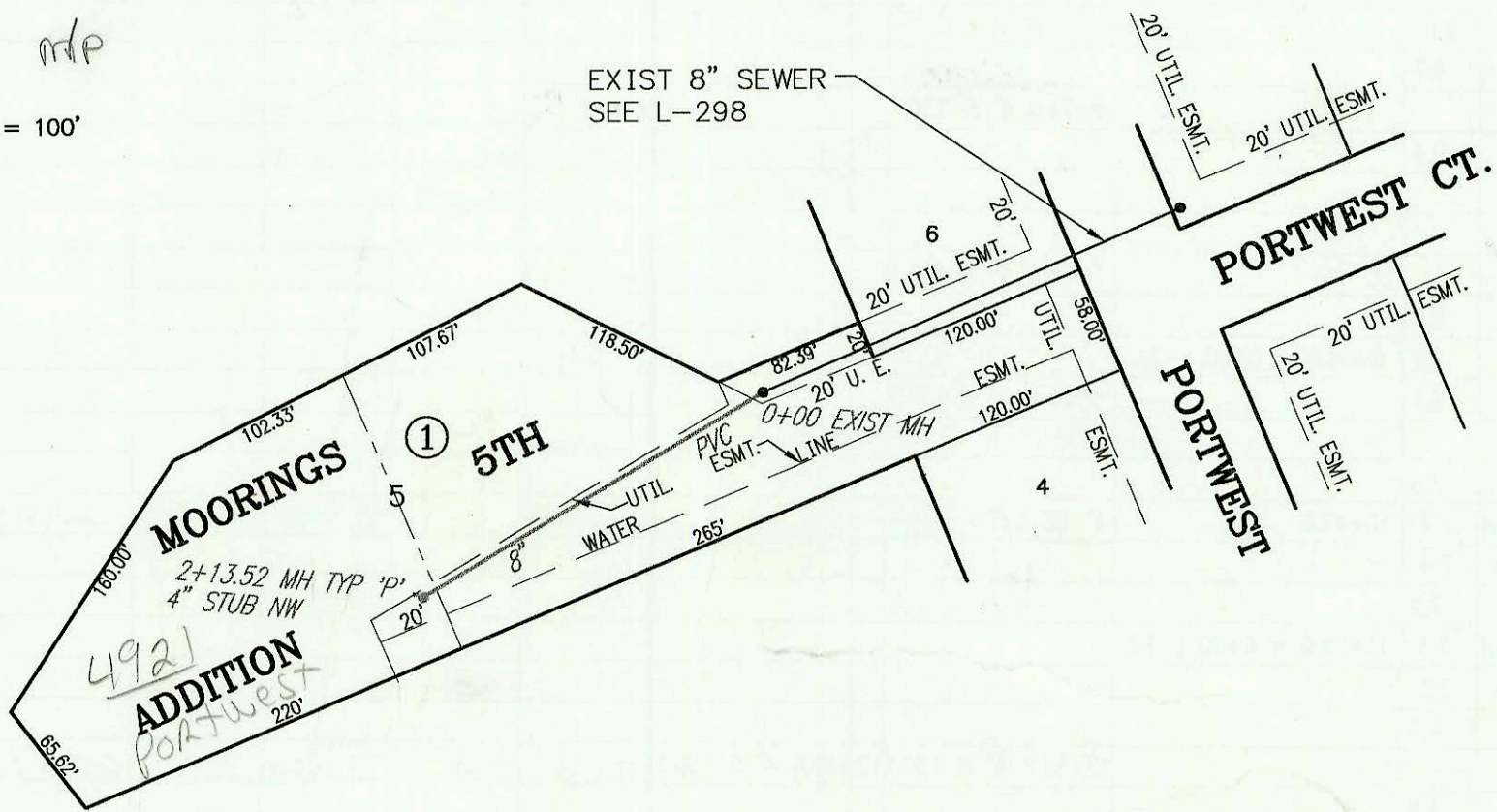
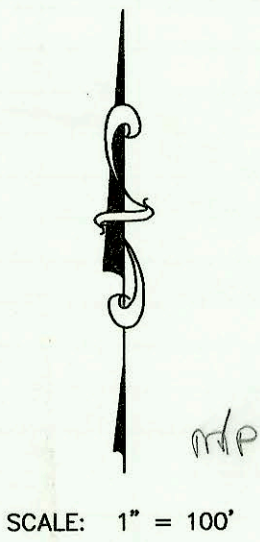


PRIVATE SANITARY SEWER TO SERVE LOT 1, BLOCK 1, KUMC ADDITION  
PRIVATE PROJECT NO. 537PPS (607861)  
BUILT BY W.B. CARTER CONSTRUCTION CO.  
BOOKED 1/05/96 FROM AS BUILTS



LATERAL 82, SANITARY SEWER NO. 23  
PROJECT NO. 468-82358 (742379)  
BUILT BY DULING CONSTRUCTION CO.  
BOOKED 01/08/96 AS PER PLAN



CONSTRUCTION RECORD						SERVICE RECORD						
STATION	ELEVATION		DEPTH	MANHOLE	4-INCH "Y" BRANCHES		No. of Permit		House Number		DATE OF PERMITS	
	GROUND	GRADE			North West	South East	North West	South East	North West	South East	North West	South East
PRIVATE SANITARY SEWER TO SERVE LOT 1, BLOCK 1, KUMC ADDITION												
0+00	112.61	108.06 OUT	4.6	0+00								
	112.61	108.20 IN	4.4									
1+00	113.00	108.60	4.4									
2+00	114.60	109.00	5.6	2+00	6" NW	109.10						
LATERAL 82, SANITARY SEWER NO. 23												
0+00	143.10	137.07 OUT	6.0	0+00								
	143.10	137.26 IN	5.8									
1+00	142.80	137.66	5.1									
2+00	142.50	138.06	4.4									
	142.90	138.11	4.8	2+13.52	4" NW	138.44	96-12576-7		4981 Postwest		7-25-96	
LAT 1, MAIN 16, SW (cont from N-195)												
LINE 2	14+00	135.80	128.26	7.5								
		136.45	128.35 out	8.1	14+21.7 = 0+00 L-2C	4" SCH 40 4" STUB NW	96-9304-7		2205 Sandplum		5-16-96	
		136.45	128.45 in	8.0								
		135.85	129.20	6.7	14+78.8 CLEANOUT RISER	4" SCH 40 Tied to 4" wye at C.O.	96-13172-7		2209 Sandplum		8-14-96	
LINE 2A	0+00 L-2A	134.40	125.67	8.7	0+00 = 8+04.6 L-2							
					0+59.7 4" W 130.1	4" SCH 40	98-8247-7	2000-00502	2208 Sandplum	2238 Sandplum	5-14-98	2-24-00
	1+00	137.00	126.61	10.4		1+53.1 4" SCH 40	96-8981-7		2230 Sandplum		6-7-96	
		137.00	127.35	9.7	1+79.1	4" NW 127.70		97-1788-7	2234 Sandplum			10-8-97
LINE 2B	0+00 L-2B	134.50	127.28	7.2	0+00 = 11+54.0 L-2							
		135.50	127.60	7.9	0+65.0	4" NW 127.95	96-8960-7	96-13971-7	2210 Sandplum	2214 Sandplum	6-7-96	8-14-96
LINE 2C	0+00 L-2C	136.45	128.45	8.0								
		136.55	129.20	7.4	0+22.0 CLEANOUT RISER	4" SCH 40 Tied to 4" wye	96-6931-7		2201 Sandplum		5-8-96	
LINE 3	0+00 L-3	135.50	123.15	12.3	0+00 = 0+00 L-1 & L-2							
					0+25.0 4" W 130.1							
	1+00	136.30	123.52	12.8		0+90.0 4" W 130.1						
						1+55 4" W 130.1						
	2+00	137.30	123.90	13.4		2+20.0 4" W 130.1	2003-05321		2318 Sandplum		2-5-98	
	3+00	137.00	124.27	12.7		3+24.7 4" W 130.1	97-7946-7		2314 Sandplum			
						4+29.3 4" N 130.1						
		135.80	124.65	11.2								
		135.80	124.68 out	11.1	4+09.2	4+81.0 4" N 130.1	2003-01048		2358 Sandplum		4-18-03	
		135.80	124.78 in	11.0								
	5+00	137.00	125.15	11.8		5+46.0 4" N 130.1	98-7516-7		2318 Sandplum		4-20-98	
						6+11.0 4" N 130.1	2001-01932	2000-01960	2350 N Sandplum	2322 Sandplum	8-3-01	9-6-00
						6+76.0 4" N 130.1						
	6+00	136.00	125.55	10.4								
		135.70	125.89 out	9.8	6+84.8	4" SW 126.34	2000-01109		2326 Sandplum		5-3-00	
		135.70	125.99 in	9.7								
	7+00	135.00	126.05	8.9								
						7+40.9 4" N 130.1	2002-00372	2002-00679	2347 Sandplum	2328 Sandplum	3-31-03	3-2-02
						7+66.5 4" S 130.1						
	8+00	135.90	126.45	9.4								
						8+29.1 4" N 130.1	97-4026-7	97-3211-7	2338 Sandplum	2334 Sandplum	3-7-97	3-8-97
						8+39.1 4" S 130.1						
	9+00	135.30	126.85	8.5								
		135.10	127.20	7.9	9+87.2	4" SW 127.55	96-629-7		2333 Sandplum		5-8-96	
LINE 4	0+00 L-4	134.40	124.40	10.0	0+00 = 3+10.8 L-1							
						0+69.3 4" E 130.1	97-593-7		2301 Sandplum		1-14-97	
	1+00	134.10	125.39	8.7								
		134.40	125.64 out	8.8	1+25.4	4" N 126.09	96-19435-7		2305 Sandplum		11-18-96	
		134.40	125.74 in	8.7								
	2+00	134.00	126.04	8.0		1+74.1 4" N 130.1	97-17978-7		2309 Sandplum		10-8-97	
						2+38.8 4" N 130.1	97-0477-7		2315 Sandplum		4-17-97	
						2+89.1 4" N 130.1	97-5977-7		2317 Sandplum		1-14-97	
	3+00	134.00	126.44	7.6								
	4+00	134.00	126.84	7.2								
		134.40	126.93 out	7.5	4+22.1	4" N 127.38						
		134.40	127.03 in	7.4		4" SCH 40 4" TAP	96-19908-7		2321 Sandplum		11-21-96	
	5+00	134.00	127.34	6.7								
		134.40	127.63 out	6.8	5+71.4	4" SW 128.08	96-19037-7		2325 Sandplum		11-14-96	
		134.40	127.73 in	6.7								
	6+00	134.00	127.85	6.2								
		134.40	128.15	6.3	6+75.7	4" SCH 40 4" STUB E 128.50	96-12891-7		2329 Sandplum		8-5-96	