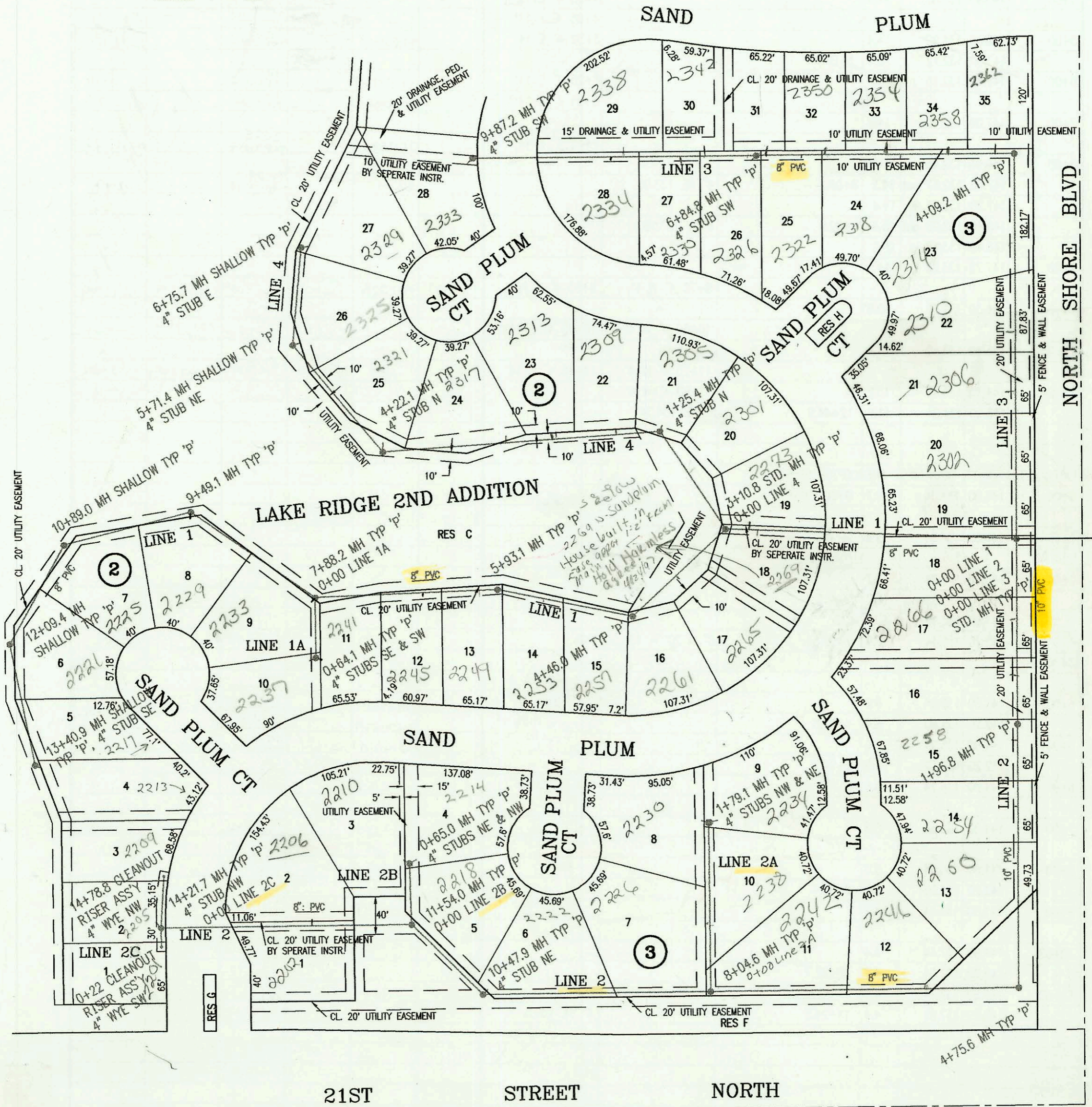


LATERAL 1, MAIN 16, SOUTHWEST INTERCEPTOR SEWER  
PROJECT NO. 468-82335 (742346)  
BUILT BY UTILITY CONSTRUCTION CO.  
BOOKED 1/9/95 PER PLAN *MP*



N 137

SCALE: 1" = 100'



2269 N Sand Plum

CONSTRUCTION RECORD						SERVICE RECORD						
STATION	ELEVATION		DEPTH	MANHOLE	4-INCH "Y" BRANCHES		No. of Permit		House Number		DATE OF PERMITS	
	GROUND	GRADE			North West	South East	North West	South East	North West	South East	North West	South East
LATERAL 1, MAIN 16, SOUTHWEST				INTERCEPTOR SEWER								
0+00 L1	135.50	123.15	12.3	0+00 L-1 = 0+00 L-2 & L-3								
					0+50 4" S 130.1							
1+00	135.30	123.52	11.8									
2+00	136.00	123.89	12.1									
					4" sch 40 2+84.5 4" N 130.1		96-16534-7	97-574-7	2279 N sand plum	2269 sand plum	10-3-96	1-14-97
3+00	134.20	124.26	9.9									
	134.40	124.30 out	10.1	3+10.4 = 0+00 L-4								
	134.40	124.40 in	10.0		3+80.8 4" SE 130.1		97-16077		2265 sand plum		9-17-97	
4+00	134.00	124.78	9.2		4+30.8 4" SE 130.1		96-6930-7		2260 sand plum		5-8-96	
	134.40	124.95 out	9.4	4+46.0								
	134.40	125.05 in	9.3		4+71.0 4" S 130.1		97-610-7		2257 sand plum		4-15-97	
5+00	134.10	125.27	8.8		5+44.0 4" S 130.1							
	134.40	125.64 out	8.8	5+93.1								
	134.40	125.74 in	8.7									
6+00	134.10	125.77	8.3		6+13.1 4" S 130.1		97-12882-7		2249 sand plum		7-20-97	
					6+74.1 4" S 130.1							
7+00	134.10	126.17	7.9									
	134.40	126.52 out	7.9	7+88.2 = 0+00 L- 1A	4" SW 126.97		96-6277-7		2233 sand plum		7-17-96	
	134.40	126.62 in	7.8									
8+00	134.10	126.67	7.4									
9+00	134.10	127.07	7.0									
	134.40	127.27 out	7.1	9+49.1	4" S 127.72		96-7456-7		2229 sand plum		5-17-96	
	134.40	127.37 in	7.0									
10+00	134.10	127.57	6.5									
	134.40	127.93 out	6.5	10+89.0	4" SDR 35 10+60.0		96-15577-7		2225 sand plum		9-18-96	
	134.40	128.03 in	6.4									
11+00	134.10	128.07	6.0									
12+00	134.10	128.48	5.6									
	134.40	128.52 out	5.9	12+09.4	12+41.0 4" sch 40		96-11455-7		2221 N sand plum		7-16-96	
	134.40	128.62 in	5.8									
13+00	134.10	128.99	5.1		4" sch 40 12+98.9		97-14955-7		2217 sand plum		8-29-97	
	134.40	129.15	5.3	13+40.9	4" SE 129.50		98-20934-7		2213 sand plum		10-24-98	
0+00 L-1A	134.40	126.62	7.8	0+00 = 7+88.2 L-1	4" SW 127.25		96-18890-7		2207 N sand plum		11-6-96	
	137.10	126.90	10.2	0+64.1	4" SE 127.75		2013 05831		3-31-93			
0+00 L-2	135.50	123.15	12.3	0+00 = 0+00 L-1 & L-3								
					0+86.7 4" W 130.1		2052 05348		2206 sand plum		2-8-02	
1+00	135.00	123.32	11.7		1+51.7 4" W 130.1							
	135.20	123.49 out	11.7	1+96.8								
	135.20	123.59 in	11.6									
2+00	134.50	123.60	10.9		2+16.7 4" W 130.1		2001 01292		2208 sand plum		11-26-91	
					2+81.7 4" W 130.1				2204 sand plum		5-24-91	
3+00	134.30	123.80	10.5		3+43.8 4" W 130.1		96-18440-7		2205 sand plum		10-31-96	
4+00	134.00	124.00	10.0									
	134.10	124.15 out	10.0	4+75.6								
	134.10	124.25 in	9.9									
5+00	134.00	124.35	9.7		5+71.9 4" N 130.1							
6+00	134.10	124.75	9.4									
7+00	134.10	125.15	9.0		7+09.8 4" N 130.1							
8+00	134.10	125.55	8.5									
	134.40	125.57	8.8	8+04.6 = 0+00 L-2A								
9+00	134.10	126.05	8.1		8+39.6 4" N 130.1							
10+00	134.10	126.46	7.6									
	134.30	126.65 out	7.7	10+47.6	4" NE 127.1		97-6465-7		2208 sand plum		4-7-97	
	134.30	126.75 in	7.6									
11+00	134.20	126.96	7.2									
	134.50	127.18 out	7.3	11+54.0 = 0+00 L-2B								
	134.50	127.28 in	7.2									
12+00	134.40	127.46	6.9		12+59.8 4" N 130.1		97-8735-7		2205 00104	2206 sand plum	2207 sand plum	6-4-97
					12+49.8 4" S 130.1						1-11-95	
13+00	135.40	127.86	7.5									

cont. on N-194