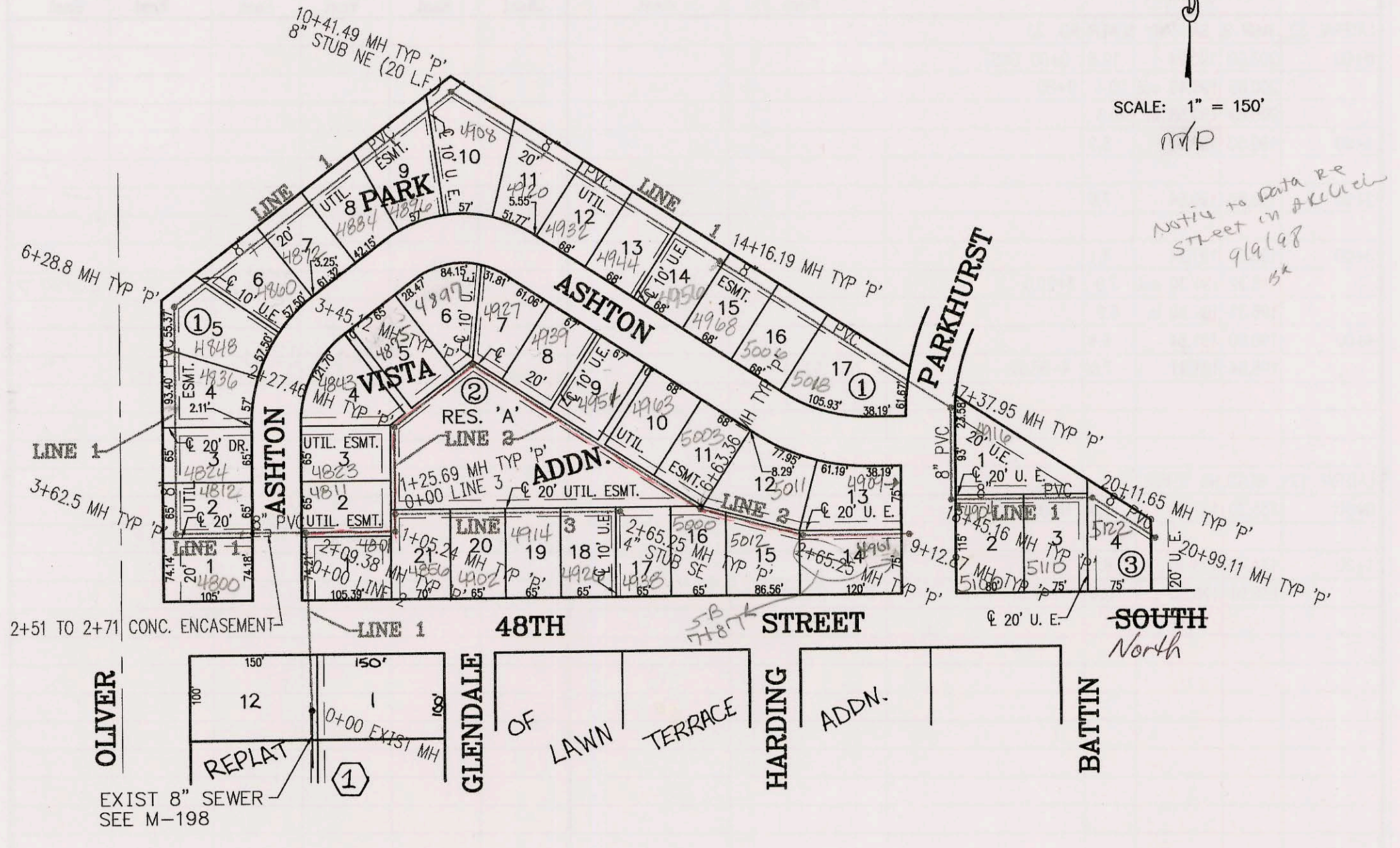
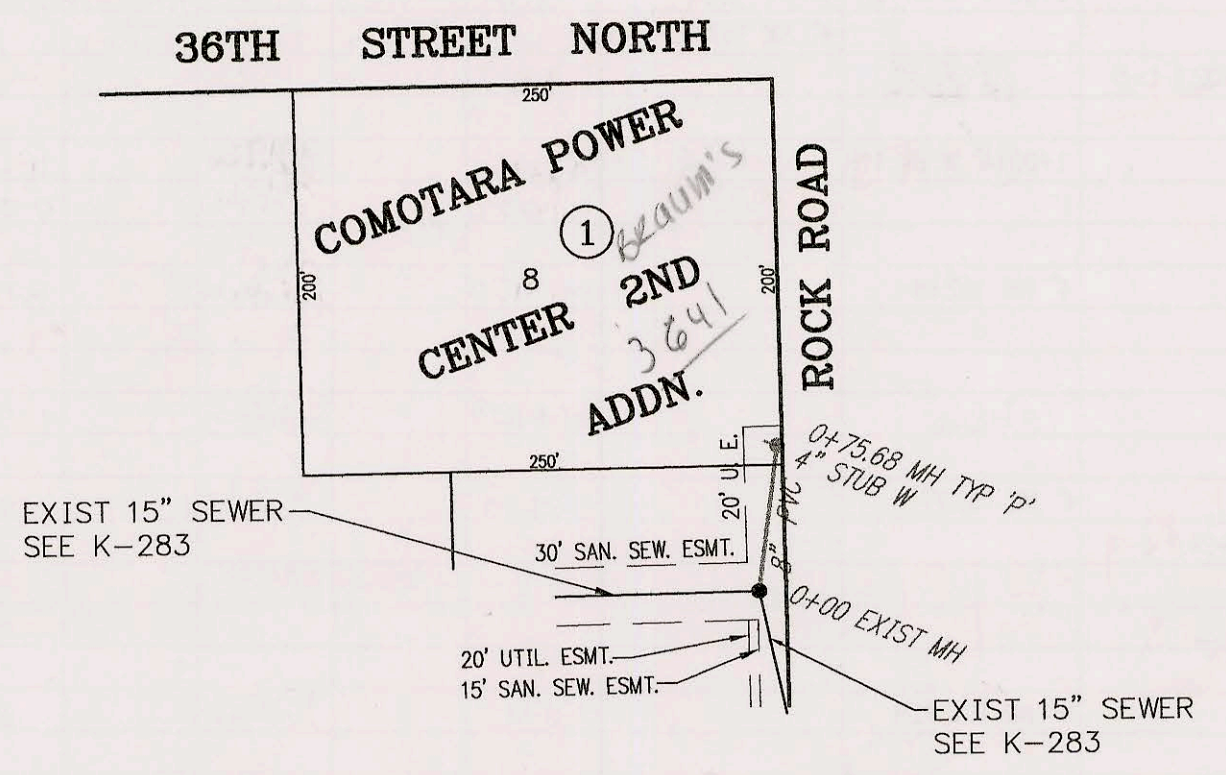


PRIVATE SANITARY SEWER TO SERVE PARK VISTA ADDITION
 PRIVATE PROJECT NO. 527PPS (607861)
 BUILT BY NOWAK CONSTRUCTION CO.
 BOOKED 01/12/96 FROM AS BUILTS



PRIVATE SANITARY SEWER TO SERVE BRAUM'S ICE CREAM DEVELOPMENT
 PRIVATE PROJECT NO. 553PPS (607861)
 BUILT BY UTILY CONTRACTORS CO.
 BOOKED 1/19/96 FROM AS BUILTS



Note: Data for this private contract sewer is on page N-197.

CONSTRUCTION RECORD						SERVICE RECORD						
STATION	ELEVATION		DEPTH	MANHOLE	4-INCH "Y" BRANCHES		No. of Permit		House Number		DATE OF PERMITS	
	GROUND	GRADE			North West	South East	North West	South East	North West	South East	North West	South East
PRIVATE SANITARY SEWER TO SERVE PARK VISTA ADDITION												
Line 1 0+00 L-1	221.12	212.00	OUT	9.1	0+00							
	221.12	212.96	IN	8.2								
1+00	220.70	218.39		2.3								
2+00	222.00	213.81		8.2								
	222.49	213.85	OUT	8.6	2+09.38 = 0+00 L-2							
3+00	222.49	213.96	IN	8.5		4" SCH 40 3+53.9	2000 00276	4800 Ashton			2-1-2000	
	220.50	214.42		6.1								
3+00	220.45	214.74	OUT	5.7	3+62.5	4" SCH 40 3+08.38	2000- 00977	4812 E Ashton			4-20-00	
	220.45	214.82	IN	5.6		4" SCH 40 4+12.5	2000 00218	4821 Ashton			5-17-00	
4+00	220.00	214.93		5.1		4" SCH 40 5+37.2	99-01389	4836 Ashton			12-2-99	
	219.40	215.24		4.2								
6+00	220.40	215.54		4.9		4" SCH 40 6+42 Saddle	99-01227	4848 Ashton			11-18-99	
	220.39	215.63	OUT	4.8	6+28.8							
7+00	220.39	215.63	IN	4.8			3512	4860 Ashton			4-29-99	
	221.00	215.96		5.0		4" SCH 40 PVC 7+45.8 Saddle	3333	4872 Ashton			9-24-98	
8+00	222.00	216.41		5.6		4" SCH 40 PVC 7+96.8 Saddle	3388	4886 Ashton			9-27-98	
9+00	223.20	216.87		6.3								
10+00	223.70	217.33		6.4								
	223.52	217.52	OUT	6.0	10+41.49	4" SCH 40 PVC 9+51.5 Saddle	3262	4896 Ashton			1-22-99	
11+00	223.52	217.58	IN	5.9			3143	4908 Ashton			5-21-97	
	224.50	217.82		6.7		4" SCH 40 PVC 10+81.5 Saddle	3314	4920 Ashton			12-7-98	
12+00	225.90	218.22		7.7			3499	4932 Ashton			9-9-99	
13+00	226.50	218.63		7.9		4" SCH 40 13+70.19	2000-00999	4944 Ashton			4-20-00	
	227.70	219.03		8.7		4" SCH 40 13+87.2	3142	4956 Ashton			5-7-97	
14+00	227.45	219.10	OUT	8.3	14+16.19	4" SCH 40 14+45.2	3172	4968 Ashton			7-30-97	
	227.45	219.16	IN	8.3			99-01093	5018 Ashton			10-29-99	
15+00	229.00	219.49		9.5		4" SCH 40 15+72.9	3490	5018 Ashton			12-29-97	
16+00	229.70	219.88		9.8								
17+00	231.00	220.27		10.7								
	231.10	220.42	OUT	10.7	17+37.95		189-416	4910 PARKVIEW			8-17-99	
18+00	231.10	220.55	IN	10.6								
	230.80	220.83		10.0			3264	5100 E 48TH			1-22-99	
18+00	230.67	221.03	OUT	9.6	18+45.16							
	230.67	221.07	IN	9.6								
19+00	231.50	221.30		10.2			3261	5115 E 48TH			1-21-99	
20+00	232.10	221.71		10.4								
	231.92	221.76	OUT	10.2	20+11.65		189-444	5125 E 48TH ST			8-17-99	
20+00	231.92	221.89	IN	10.0								
	230.98	222.23		8.8	20+99.11							
Line 2 0+00 L-2	222.49	213.85	OUT	8.6	0+00 = 2+09.38 L-1							
	222.49	214.09		8.4		4" SCH 40 0+75.2 Saddle	99-00887	4801 Ashton			10-12-99	
1+00	222.90	214.51		8.4								
	223.43	214.53	OUT	8.9	1+05.24			4811 Ashton			5-4-99	
2+00	223.43	214.60	IN	8.8			3513					
	222.80	214.57	OUT	8.2	1+25.69 = 0+00 L-3			4823 Ashton			5-12-98	
2+00	222.80	214.66	IN	8.1		1+93.5 4" SCH 40	3406					
	222.30	215.11		7.2								
2+00	221.75	215.27	OUT	6.5	2+27.46		3514	4843 Ashton			5-4-99	
	221.75	215.27	IN	6.5		4" SCH 40 2+85.0	2933	4855 Ashton			12-15-95	
3+00	223.00	215.45		7.6		4" SCH 40 3+87.0	2954	4867 Ashton			2-21-96	
	223.35	215.57	OUT	7.8	3+45.12	4" SCH 40 3+87.0	199-445	4887 Ashton			8-17-99	
4+00	224.00	216.32		7.7			3407	4899 Ashton			5-12-98	
	224.90	217.59		7.3			3263	4937 Ashton			1-22-99	
6+00	224.50	218.85		5.6			3384	4952 Ashton			7-27-98	
	225.95	219.65	OUT	6.3	6+63.36	4" SCH 40 6+42.36	3373	2000-01130 5003 Ashton	5000 E 48TH		9-2-98	5-8-00
7+00	225.95	219.75	IN	6.2								
	227.00	219.89		7.1		4" SCH 40 7+42.87	2000-01223	5012 E 48TH N			5-26-00	
7+00	228.67	220.20	OUT	8.5	7+87.87							
	228.67	220.34	IN	8.3			3313	5011 Ashton			12-17-98	
8+00	229.20	220.39		8.8								
9+00	230.00	220.82		9.2		4" SCH 40 8+38.8	99-01271	2000-00649 4909 PARKVIEW	4901 PARKVIEW		11-26-99	3-10-00
	230.10	220.88		9.2	9+12.87							
Line 3 0+00 L-3	222.80	214.57	OUT	8.2	0+00							
	222.80	214.66	IN	8.1								
1+00	224.30	215.25		9.1								
2+00	225.00	215.84		9.2		4" SCH 40 1+85.3 Saddle	99-01034	4906 E 48TH			10-27-99	
	225.30	216.22		9.1	2+65.25	4" SE 216.51	3282	4938 E 48TH			3-10-99	