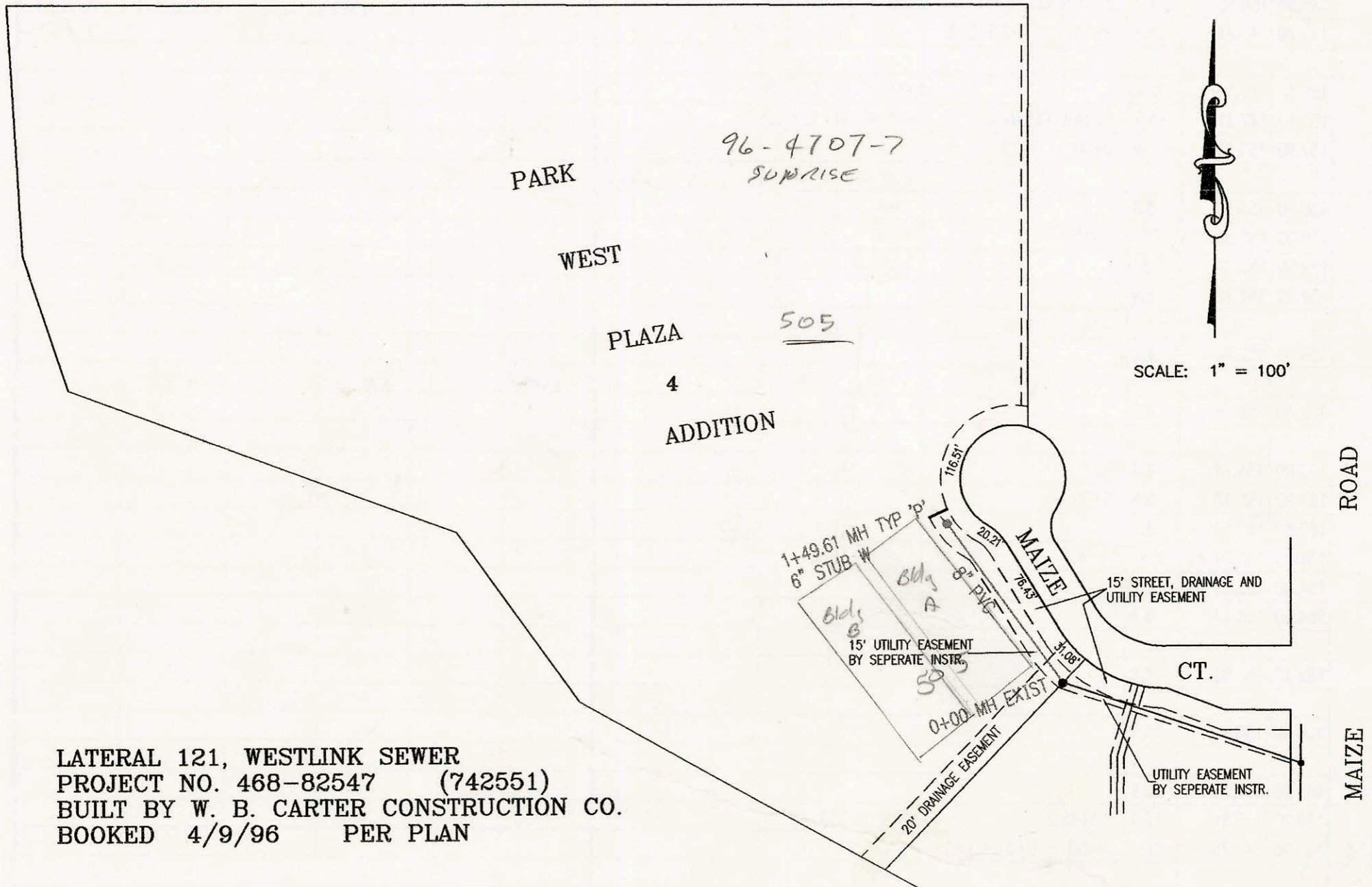
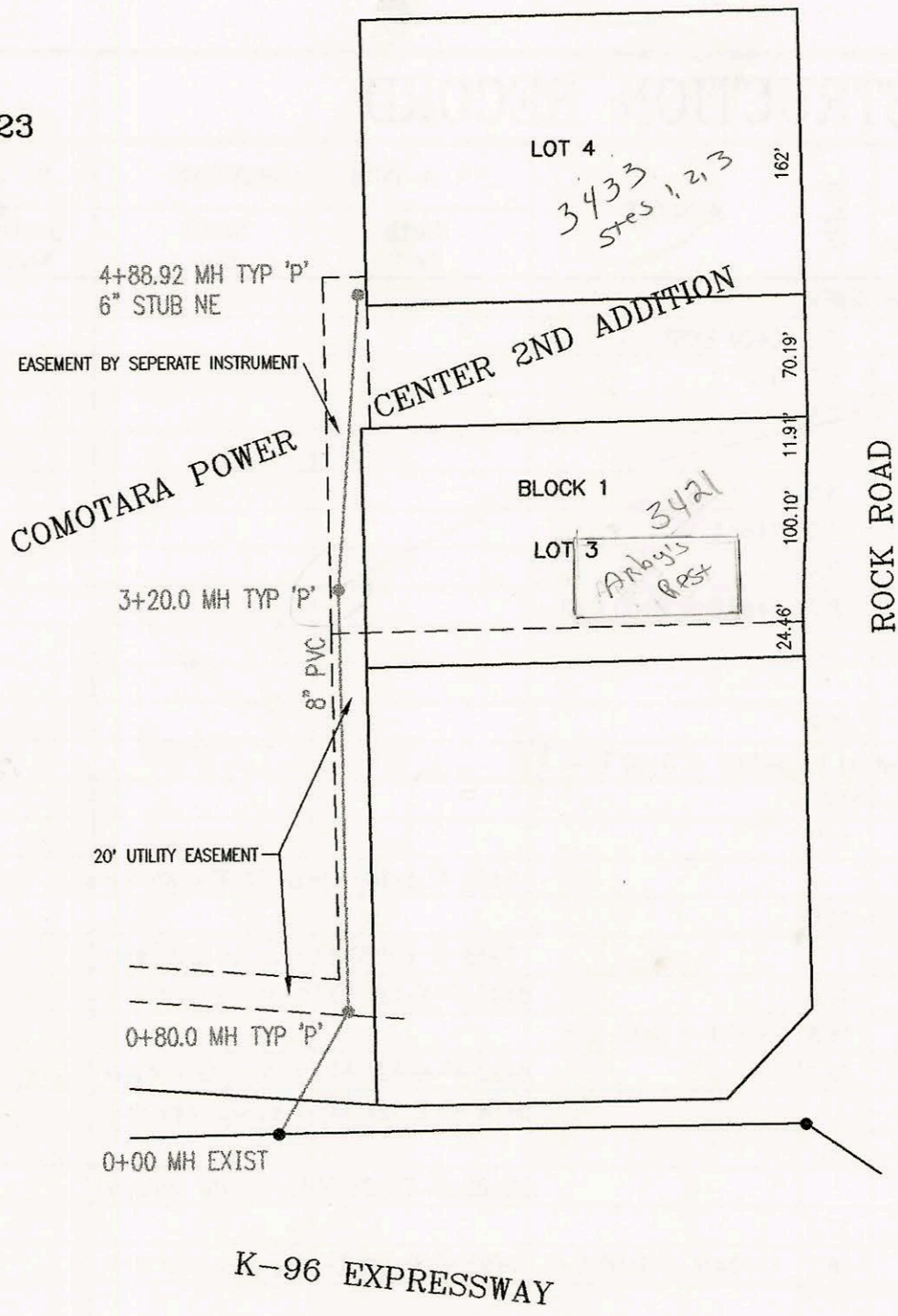
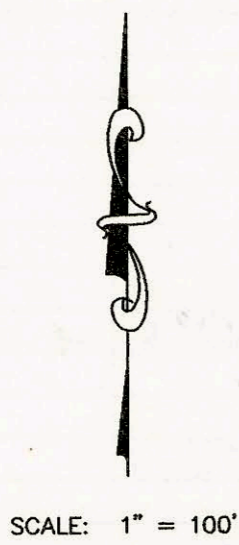


LATERAL 52, MAIN 9, SANITARY SEWER NO. 23
PROJECT NO. 468-82502 (742528)
BUILT BY W. B. CARTER CONSTRUCTION CO.
BOOKED 3/13/96 PER PLAN



LATERAL 121, WESTLINK SEWER
PROJECT NO. 468-82547 (742551)
BUILT BY W. B. CARTER CONSTRUCTION CO.
BOOKED 4/9/96 PER PLAN

CONSTRUCTION RECORD						SERVICE RECORD						
STATION	ELEVATION		DEPTH	MANHOLE	4-INCH "Y" BRANCHES		No. of Permit		House Number		DATE OF PERMITS	
	GROUND	GRADE			North West	South East	North West	South East	North West	South East	North West	South East
LATERAL 52,	MAIN 9,	SANITARY	SEWER	NO. 23								
0+00	203.00	190.24	12.8	0+00 EXIST								
	200.89	190.48 out	10.4	0+80								
	200.89	190.58 in	10.3									
1+00	199.50	190.64	8.9									
2+00	198.50	190.94	7.6									
3+00	198.30	191.24	7.1									
	198.32	191.30 out	7.0	3+20.0			97-149757		3421 Rock Rd		9-20-97	
	198.32	191.40 in	6.9									
4+00	198.00	191.64	6.4									
	198.94	191.91	7.0	4+88.92	6" NE 192.01		96-55827		3423 (suites 1, 2, 3) Rock Rd		4-22-96	
LATERAL 121, WESTLINK SEWER												
0+00	135.30	127.90	7.4	0+00 EXIST			98-5337		505 Meadow Pass		4-3-98	
1+00	134.40	128.30	6.1		505 6" W 128.67		96-49877		505 N Meadow Pass		4-8-96	
	136.90	128.50	8.4	1+49.51								
LAT 352, SWI CONT FROM N-203												
2+00	163.60	149.16	14.4		2+50 4" S 10V 12H	4" S OR 35 2+50 4" S 10V 12H	96-13537		8221 Meadow Pass		8-13-96	
3+00	163.30	149.86	13.4									
4+00	163.40	150.57 out	12.8	4+02.1 = 0+00 L-6								
	163.40	150.77 in	12.6		4+15 4" W 8V 9H		97-55567		2708 Lake Ridge		3-19-99	
					4+40 4" E 9V 21H	4" SCH 40 4+40 4" E 9V 21H	2000- 05 889		8217 Meadow Pass		4-2-00	
5+00	165.00	151.94	13.1		4+95 4" W 9V 9H	4" SCH 40 4+95 4" W 9V 9H	2000- 08 49		2702 Lake Ridge		12-19-00	
					5+90 4" E 10V 21H	4" SCH 40 5+90 4" E 10V 21H	97-57851		8213 Meadow Pass		4-10-97	
6+00	167.00	153.14	13.9		6+00 4" W 10V 9H		2000- 00 408		2618 Lake Ridge		2-23-01	
7+00	169.70	154.42	15.3	7+05.5								
					7+20 4" W 11V 9H		98-169947		2614 Lake Ridge		9-8-98	
					7+35 4" E 12V 21H	4" SCH 40 7+35 4" E 12V 21H	2000- 01 320		2610 N LAKE RIDGE		5-31-00	
8+00	168.70	155.54	13.2		7+95 4" W 9V 9H	4" SCH 40 7+95 4" W 9V 9H	2000- 00 789		2605 Lake Ridge		9-17-99	
					8+50 4" W 9V 21H	4" SCH 40 8+50 4" W 9V 21H	99-00619		1101 Used			
9+00	168.80	156.74	12.1		8+85 4" W 9V 9H	4" SCH 40 8+85 4" W 9V 9H	2000- 02 619		8205 Meadow Pass		3-28-00	
	167.60	157.60	10.0	9+70.9	4" SW 157.93	4" SCH 40			2602 Lake Ridge		11-30-00	
LINE 6	0+00 L-6	163.40	150.77	12.6	0+00 = 4+02.1 L-5							
1+00	163.60	151.37	12.2		1+00 4" W 8V 11H		98-224057		2710 Lake Ridge		11-16-98	
							98-140037		2718 Lake Ridge		7-23-98	
2+00	163.60	151.97	11.6									
	163.40	152.53 out	10.9	2+92.5	4" NW 152.86		1999-429		2718 Lake Ridge		8-6-99	
	163.40	152.73 in	10.7									
3+00												
							97-119627		8203 Meadow Pass		7-15-97	
4+00	162.60	153.17	9.4									
	163.00	153.44	9.6	4+11.0	4" NE 153.77		97-30977		8227 Meadow Pass		2-12-97	
LINE 7	0+00 L-7	166.60	148.43 out	18.2	0+00 = 11+24.9 L-1							
		166.60	154.92 in	11.7								
1+00	167.70	156.12	11.6									
	171.70	157.21 out	14.5	1+91.1	4" NE 10V 12H	4" SCH 40	2000- 01 194		8202 Meadow Pass		5-8-00	
	171.70	157.41 in	14.3									
2+00					2+05 4" N 11V 9H		98-178057		8206 Meadow Pass		9-30-98	
3+00	174.00	158.72	15.3		3+00 4" N 11V 9H							
	176.30	159.71	16.6	3+83.1	8" W 159.71							