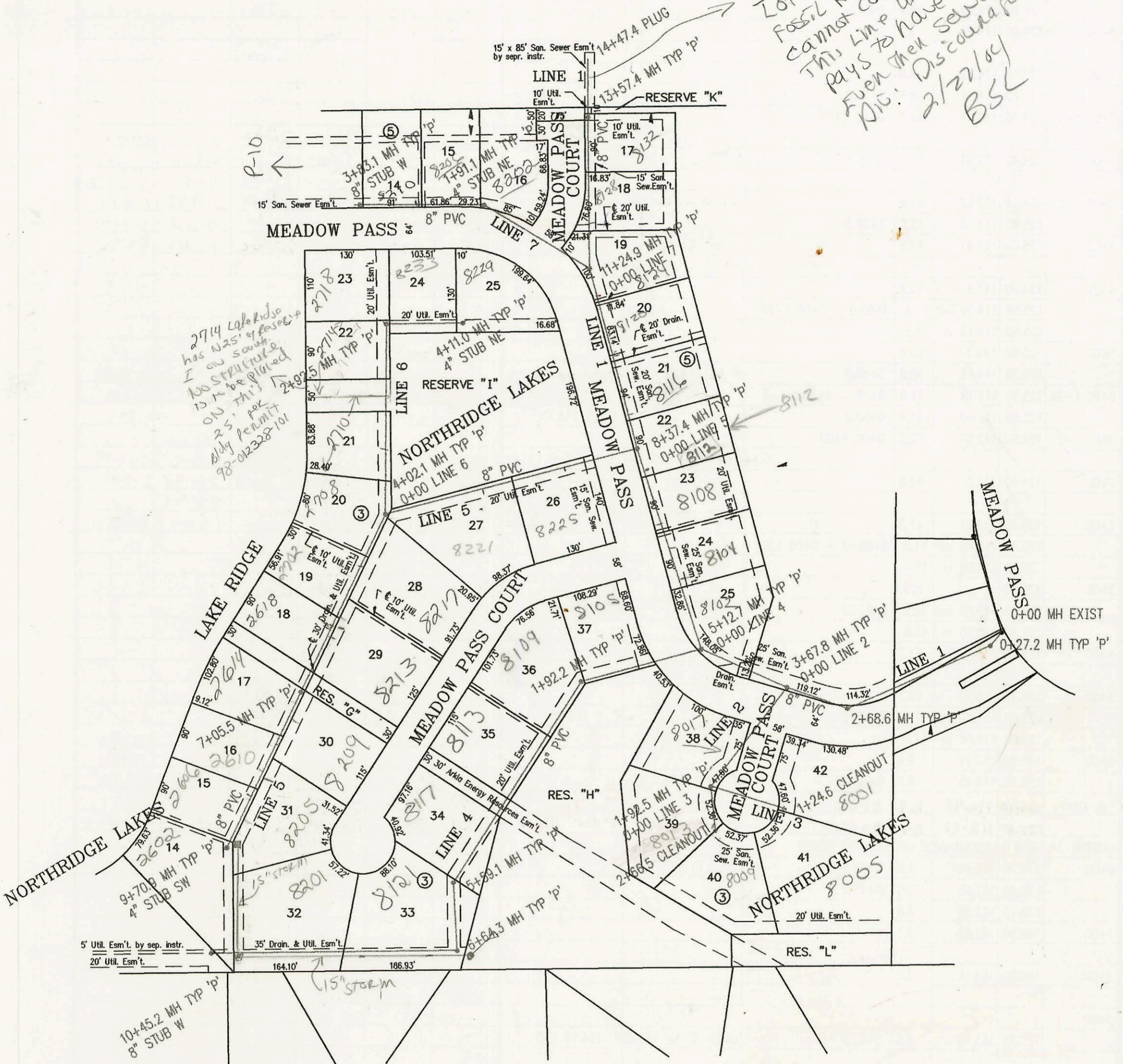


LATERAL 352, SOUTHWEST INTERCEPTOR SEWER
PROJECT NO. 468-82488 (742737)
BUILT BY W. B. CARTER CONSTRUCTION CO.
1/24/96 PER PLAN

SCALE: 1" = 150'

NOTE 2904 Fossil Rim
Lot 6 BKA Add
Fossil Rim Add
cannot connect to
this line unless owner
pays to have sewer
Even then sewer maint
D/C: Discourager
2/27/04
BSC



*Storm
hook
0-305*

CONSTRUCTION RECORD						SERVICE RECORD						
STATION	ELEVATION		DEPTH	MANHOLE	4-INCH "Y" BRANCHES		No. of Permit		House Number		DATE OF PERMITS	
	GROUND	GRADE			North West	South East	North West	South East	North West	South East	North West	South East
LATERAL 352, SW INTERCEPTOR			SEWER									
LINE 1	0+00 L-1	152.19	144.96	7.2	0+00 EXIST							
		151.20	145.04	6.2	0+27.2							
	1+00	151.40	145.26	6.1								
	2+00	151.10	145.56	5.5								
		152.80	145.76	7.0	2+68.6							
	3+00	153.30	145.86	7.4								
		154.80	146.06	8.7	3+67.8 = 0+00 L-2							
	4+00	155.30	146.16	9.1								
	5+00	157.20	146.46	10.7								
		157.60	146.50 out	11.1	5+12.7 = 0+00 L-4	4" SDR 35 5+28.17		96-7455-7	8152 Meadow Pass		5-20-96	
		157.60	146.60 in	11.0								
	6+00	160.00	146.86	13.1		4" SDR 35 6+23 4" E 10V 3H		96-10729-7	8104 Meadow Pass		7-2-96	
	7+00	162.20	147.16	15.0		4" SDR 35 7+13 4" E 12V 8H		96-11429-7	8108 Meadow Pass		7-16-96	
	8+00	163.50	147.46	16.0		8+03 4" E 12V 13H		97-0476-7	8117 Meadow Pass		2-12-97	
		163.90	147.57	16.3	8+37.4 = 0+00 L-5							
	9+00	163.50	147.76	15.7		4" SDR 35 8+92 4" E 12V 14H		96-1832-7	8116 Meadow Pass		2-13-96	
						8+86 4" E 12V 14H		97-12304-7	8120 Meadow Pass		7-5-98	
	10+00	164.20	148.06	16.1		10+80 4" E 13V 14H		97-10173-7	8124 Meadow Pass		6-23-97	
11+00	165.70	148.36	17.3									
	166.60	148.43	18.2	11+24.9 = 0+00 L-7	11+92 4" E 14V 8H							
12+00	166.40	148.66	17.7		12+92 4" E 11V 10H		98-11774-7	8132 Meadow Pass		7-1-98		
13+00	163.80	148.96	14.8									
	164.00	149.13	14.9	13+57.4								
14+00	157.50	149.26	8.2									
14+47.4	156.50	149.40	7.1									
LINE 2	0+00 L-2	154.80	146.16	8.6	0+00 = 3+76.8 L-1							
	1+00	157.00	146.46	10.5		4" sch 40 4" NNW 13V 18H		97-11103-7	8017 Meadow Pass		7-1-97	
		163.20	146.74 out	16.5	1+92.5	4" SW 13V 20H		2002-872	8013 Meadow Pass		8-22-00	
2+00	163.00	148.93	14.1									
	165.30	150.59	14.7	2+66.5 CLEANOUT	2+55 4" S 10V 24H		97-11350-7	8008 Meadow Pass		7-9-97		
LINE 3	0+00 L-3	163.20	146.84	16.4	0+00 = 1+92.5 L-2							
	1+00	162.50	147.14	15.4		1+15 4" SE 12V 28H		99-00802	8005 Meadow Pass		9-29-99	
	163.10	147.21	15.9	1+24.6 CLEANOUT	1+18 4" NE 12V 22H		99-10297	8001 Meadow Pass		1-21-99		
LINE 4	0+00 L-4	157.60	150.73	6.9	0+00 = 5+12.7 L-1							
	1+00	158.10	150.13	8.0								
		159.00	151.50 out	7.5	1+92.2							
		159.00	151.70 in	7.3								
	2+00	158.70	151.78	6.9								
						4" SDR 35 2+87.2 tags		96-1896-7	8109 Meadow Pass		2-14-96	
	3+00	159.00	152.78	6.2				2003 061208	8113 Meadow Pass		5-6-03	
	4+00	162.40	153.78	8.6				96-1833-7	8117 Meadow Pass		2-13-96	
	5+00	163.00	154.78	8.2								
		163.90	155.37	8.5	5+59.1							
	6+00	163.60	155.53	8.1								
		164.20	155.79 out	8.4	6+64.3							
		164.20	155.99 in	8.2								
	7+00	164.50	156.13	8.4								
								2002 02047	8101 Meadow Pass		7-29-02	
8+00	166.30	156.53	9.8									
							96-11430-7	8201 Meadow Pass		7-16-96		
9+00	168.00	156.93	11.1									
10+00	167.50	157.33	10.2									
	170.20	157.51	12.7	10+45.2	8" W 157.51							
LINE 5	0+00 L-5	163.90	147.76	16.1	0+00 = 8+37.4 L-1							
	1+00	163.60	148.46	15.1								
							99-3848-7	8225 Meadow Pass		3-3-99		