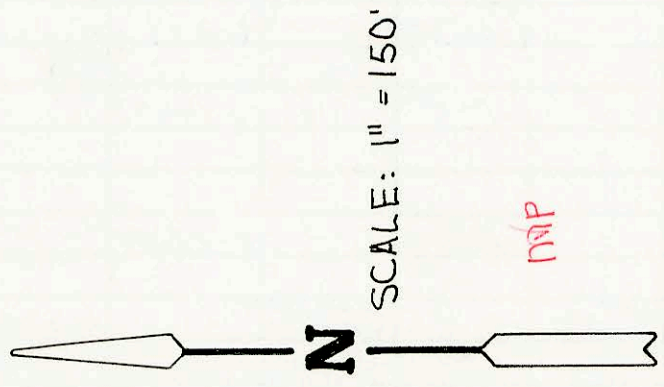
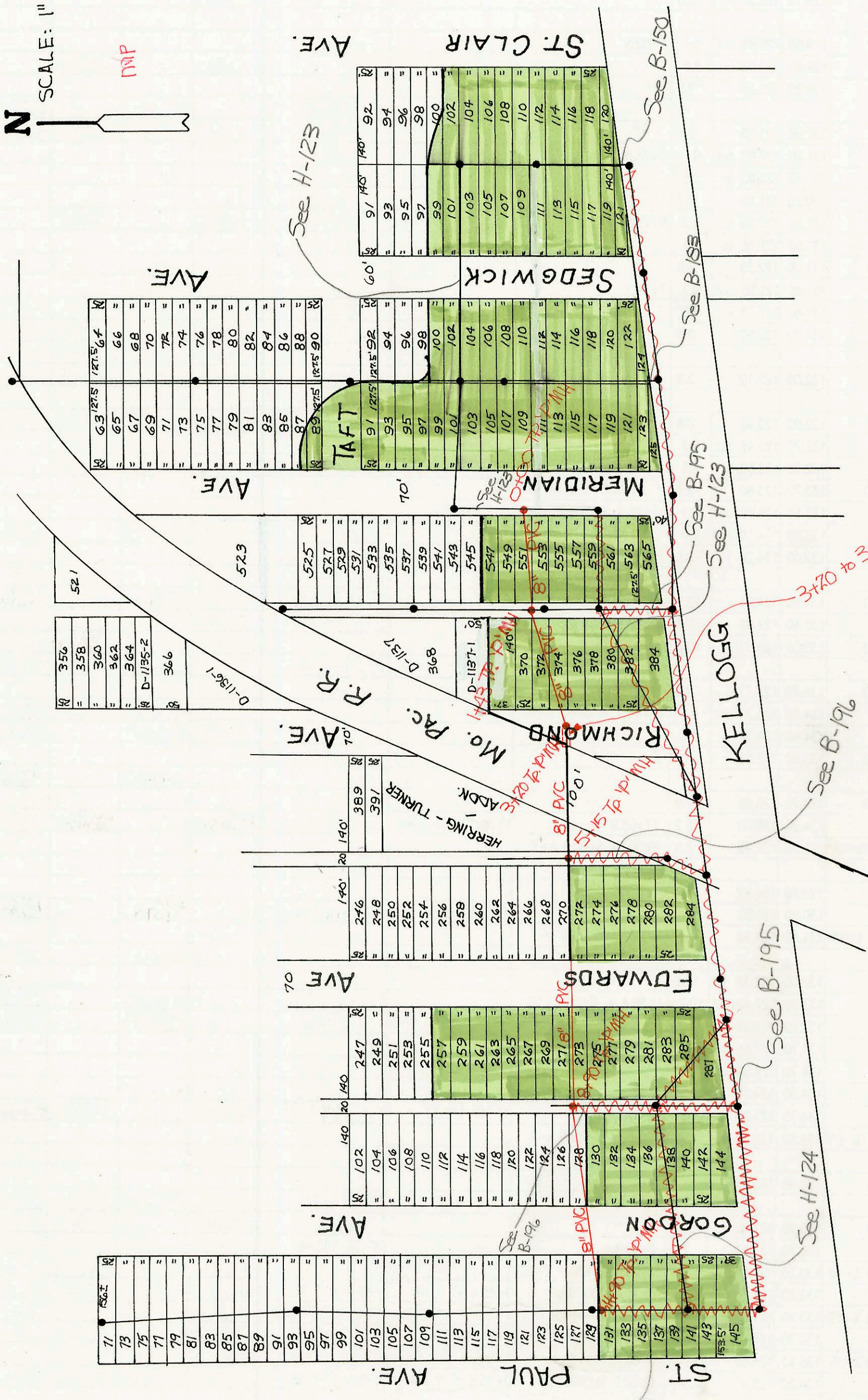


KELLOGG - K-42 TO SYCAMORE
(SANITARY SEWER CHANGES)
PROJ. NO. 700500
BUILT BY WILDCAT CONST. CO.
BOOKED 2-9-96 FROM AS BUILTS



MVP

SCALE: 1" = 150'



R	356
=	358
=	360
=	362
=	364
R	D-1135-2
R	366

R	521
=	523
=	525
=	527
=	529
=	531
=	533
=	535
=	537
=	539
=	541
=	543
=	545
=	547
=	549
=	551
=	553
=	555
=	557
=	559
=	561
=	563
R	565

R	63	127.5	127.5	64
=	65			66
=	67			68
=	69			70
=	71			72
=	73			74
=	75			76
=	77			78
=	79			80
=	81			82
=	83			84
=	85			86
=	87			88
R	89	127.5	127.5	90

R	91	140	140	92
=	93			94
=	95			96
=	97			98
=	99			100
=	101			102
=	103			104
=	105			106
=	107			108
=	109			110
=	111			112
=	113			114
=	115			116
=	117			118
=	119			120
R	121	140	140	122

R	246
=	248
=	250
=	252
=	254
=	256
=	258
=	260
=	262
=	264
=	266
=	268
=	270
=	272
=	274
=	276
=	278
=	280
=	282
R	284

R	102
=	104
=	106
=	108
=	110
=	112
=	114
=	116
=	118
=	120
=	122
=	124
=	126
=	128
=	130
=	132
=	134
=	136
=	138
=	140
R	142
R	144

R	247
=	249
=	251
=	253
=	255
=	257
=	259
=	261
=	263
=	265
=	267
=	269
=	271
=	273
=	275
=	277
=	279
=	281
=	283
=	285
R	287

R	131
=	133
=	135
=	137
=	139
=	141
=	143
R	145

340 to 340-Steel Sleeve

See B-196

See B-195

See H-124

See B-150

See B-153

See B-195

See H-123

See E-220

CONSTRUCTION RECORD						SERVICE RECORD						
STATION	ELEVATION		DEPTH	MANHOLE	4-INCH "Y" BRANCHES		No. of Permit		House Number		DATE OF PERMITS	
	GROUND	GRADE			North West	South East	North West	South East	North West	South East	North West	South East
KELLOGG- K-42 TO SYCAMORE (SANITARY SEWER CHANGES)												
0+00	109.81	105.07	4.7	0+00								
1+00	111.00	105.29	5.7									
	110.80	105.34	5.5	1+43								
2+00	112.00	105.41	6.6									
3+00	113.30	105.53	7.8									
	112.90	105.55	7.3	3+20								
4+00	114.00	105.65	8.3									
5+00	113.70	105.77	7.9									
	113.30	105.79	7.5	5+15								
6+00	112.30	105.89	6.4									
7+00	112.60	106.01	6.6									
8+00	111.00	106.13	4.9									
	111.40	106.24	5.2	8+90								
9+00	111.40	106.25										
10+00	112.50	106.37	6.1									
11+00	112.00	106.49	5.5									
	112.80	106.60	6.2	11+90								
LATERAL 357, SWI. (CONT. FROM N-207)												
L-2 (CONT.)	130.30	123.72 out	6.6	14+07.1 = 0+00 L-3C								
	130.30	123.82 in	6.5				99-5688-7		6601 School			8-1-99
	130.20	124.05 out	6.1	14+80.9								
	130.20	124.15 in	6.0				98-2137-7		6611 W School Cr			2-10-98
15+00	130.00	124.21	5.8									
	130.00	124.35	5.7	15+46.3	4" NW 124.45		99-11597-7		6610 School			6-2-99
L-3A	0+00 L-3A	131.20	122.55	8.6	0+00 = 10.54.2 L-3							
		131.00	122.87	8.1	0+83.5 CLEANOUT	4" SCH 40 0+78.5 4" Y NW	0+78.5 4" Y NE	2000-0736	6506 School			7-27-00
L-3B	0+00 L-3B	130.70	123.19	7.5	0+00 = 12+32.7 L-3							
		130.30	123.48	6.8	0+77.0 CLEANOUT	4" SCH 40 0+72.0 4" Y NW	0+72.0 4" Y NE	2000-0891	6510 School			4-21-00
L-3C	0+00 L-3C	130.30	123.82	6.5	0+00 = 14+07.1 L-3							
		129.80	124.15	5.7	0+85.4 CLEANOUT	4" SCH 40 0+80.4 4" Y NW	0+80.4 4" Y NE	2000-0856 96-1966-7	6606 School 6602 School			3-2-00 11-25-96
L-4	0+00 L-4	130.30	119.92	10.4	0+00 = 3+18.5 L-3							
								2001-01731	6417 W Warren Cir			7-13-01
1+00	131.10	120.85	10.3					2000-0872	6501 Warren			4-14-00
2+00	130.90	121.78	9.1			4" SCH 40 2+14.6						
	130.50	122.48 out	8.0	2+76.6 = 0+00 L-4A		4" SCH 40 2+85.6		99-01515	6505 Warren			12-23-99
	130.50	122.58 in	7.9									
3+00	131.30	122.67	8.6			4" SCH 40 3+77.6		99-01516	6509 Warren			12-23-99
4+00	131.50	123.07	8.4									
	131.80	123.29 out	8.5	4+53.6 = 0+00 L-4B								
	131.80	123.39 in	8.4									
5+00	132.30	123.57	8.7			4" SDP 35 5+28.3		96-1738-7 2000-0847	6605 Warren 6513 Warren 6502 Warren			7-19-96 2-25-04
	133.70	123.92 out	9.8	5+84.3				99-11627	6605 Warren			6-2-99
	133.70	124.02 in	9.7									
6+00	133.50	124.08	9.4									
	133.60	124.32 out	9.3	6+57.0								
	133.60	124.42 in	9.2					99-4185-7	6606 Warren			3-2-99
7+00	132.70	124.50	8.2									
	132.60	124.67	7.9	7+16.9	4" N 125.00 4" SCH 40			99-6450-7	6602 Warren			4-17-97
L-4A	0+00 L-4A	130.50	122.58	7.9	0+00 = 2+76.6 L-4							
		131.20	122.88	8.3	0+78.2 CLEANOUT	4" SCH 40 0+73.2 4" Y NW	0+73.2 4" Y NE	2000-06340	6506 Warren			2-7-2000
L-4B	0+00 L-4B	131.80	123.39	8.4	0+00 = 4+53.6 L-4							
		131.90	123.67	8.2	0+86.0 CLEANOUT	0+81.0 4" Y NW	0+81.0 4" Y NE	99-8515-7 98-9030-7	6514 Warren 6510 Warren			5-23-97 6-4-98

* 2000-08340 6506 Warren Ct - Mies Const - 2/10/00 Tied to c/o 5748