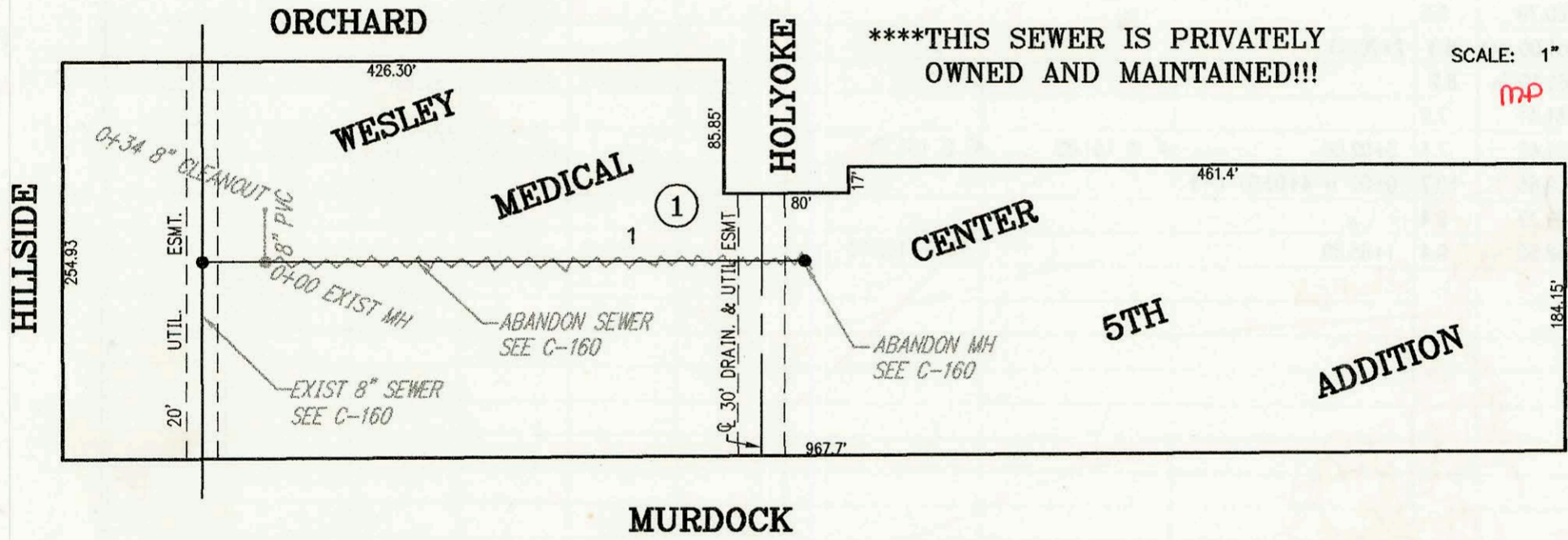


SCALE: 1" = 100'

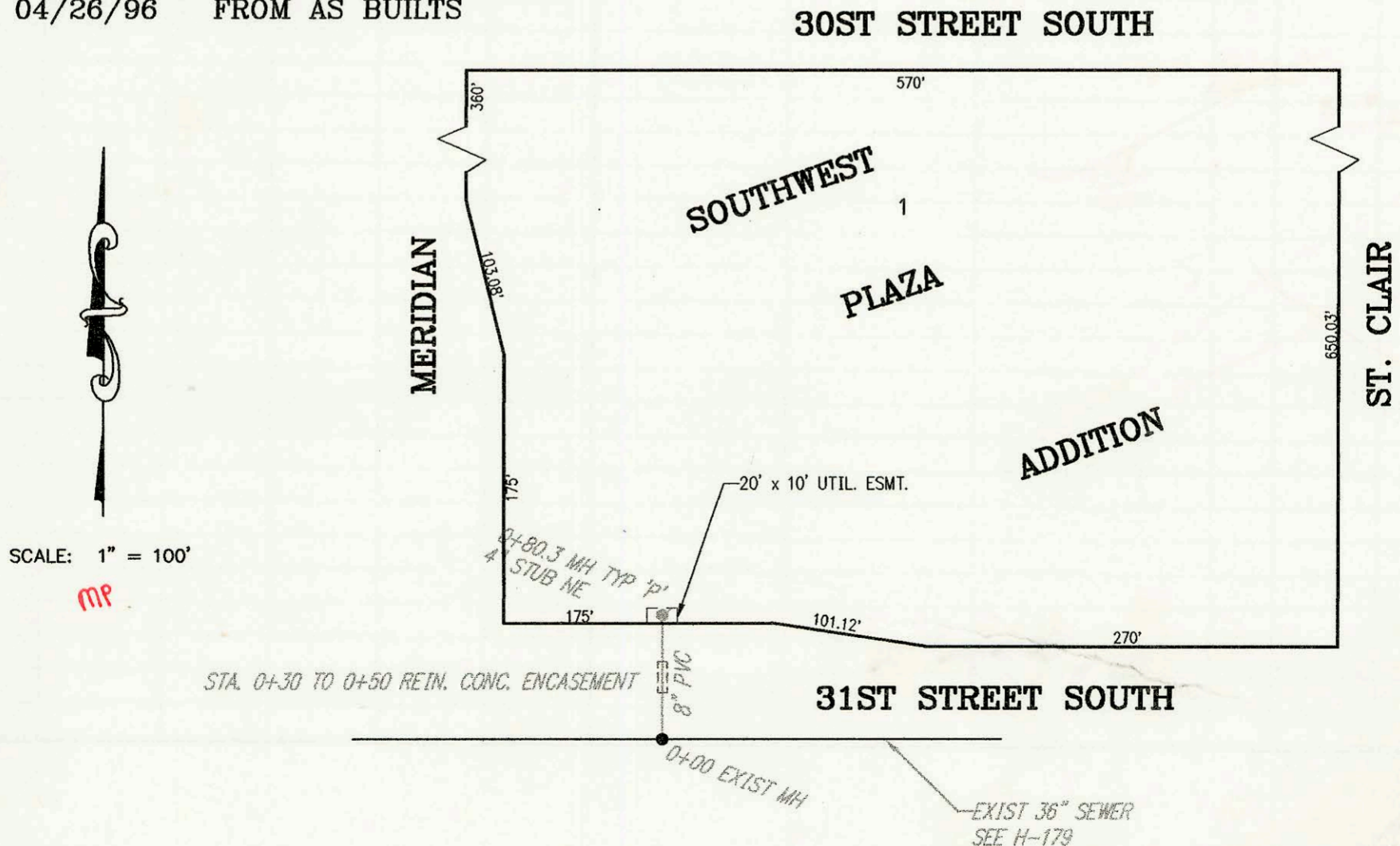
LATERAL 351, SOUTHWEST INTERCEPTOR SEWER  
 PROJECT NO. 468-82485 (742502)  
 BUILT BY NOWAK CONSTRUCTION CO.  
 BOOKED 4/12/96 PER PLAN

8" SANITARY SEWER EXTENSION TO SERVE BIRTHING CENTER  
 COLUMBIA/HCA HEALTHCARE CORP., LOT 1, BLOCK 1, WESLEY  
 MEDICAL CENTER 5TH ADDITION  
 PRIVATE PROJECT NO. 598 PPS (607861)  
 BUILT BY W. B. CARTER CONSTRUCTION CO.  
 BOOKED 04/26/96 FROM AS BUILTS



SCALE: 1" = 100'

SANITARY SEWER TO SERVE SOUTHWEST PLAZA ADDITION  
 PRIVATE PROJECT NO. 620 PPS (607861)  
 BUILT BY JESS MCCULLOUGH CONSTRUCTION CO.  
 BOOKED 04/26/96 FROM AS BUILTS



SCALE: 1" = 100'

