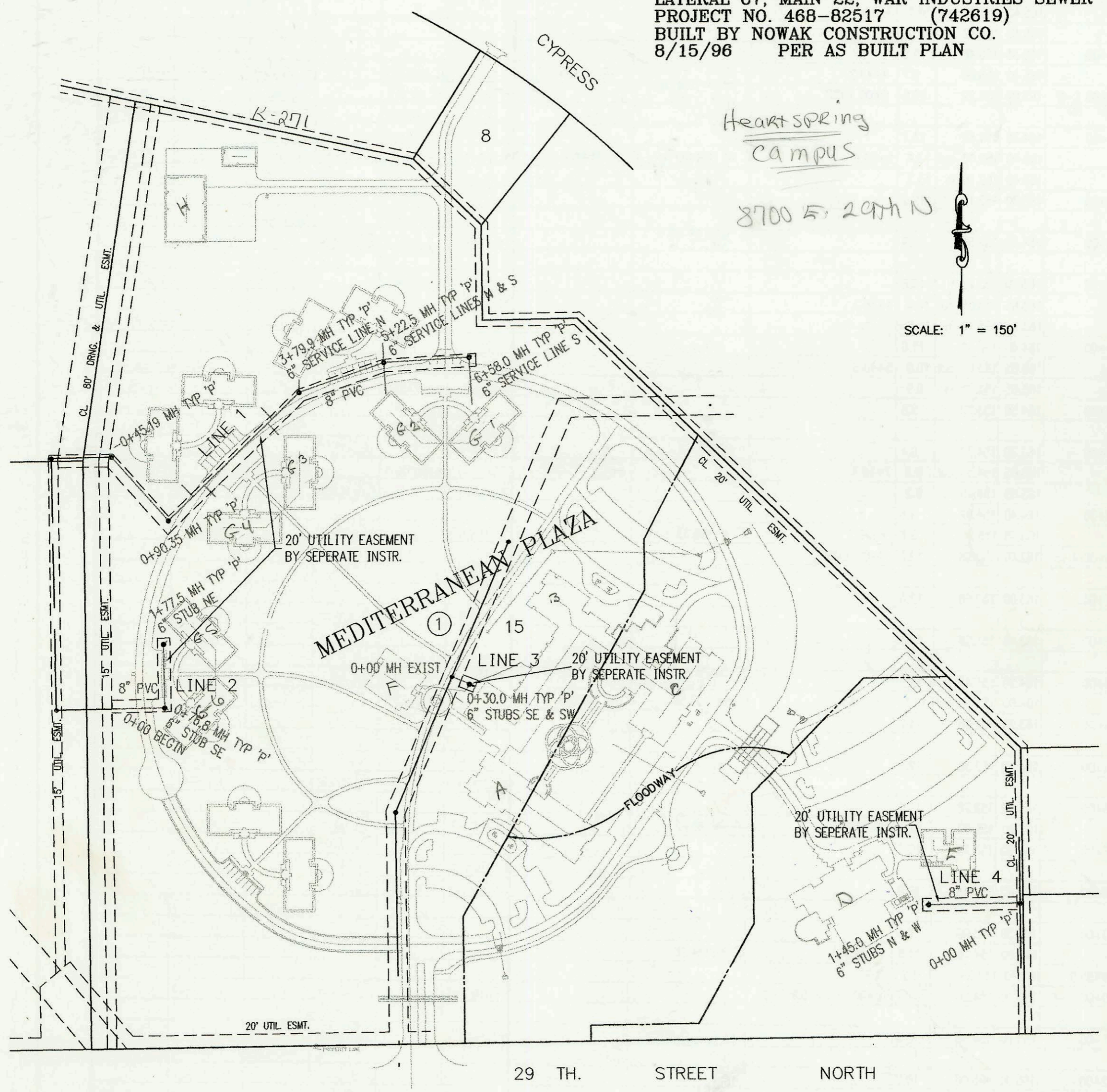
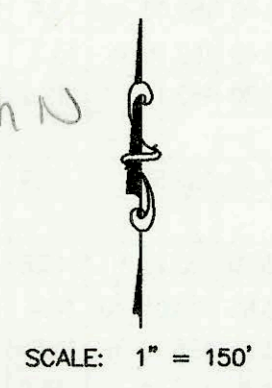


LATERAL 67, MAIN 22, WAR INDUSTRIES SEWER  
PROJECT NO. 468-82517 (742619)  
BUILT BY NOWAK CONSTRUCTION CO.  
8/15/96 PER AS BUILT PLAN

Heart Spring  
Campus  
8700 E. 29th N



29 TH. STREET NORTH

CONSTRUCTION RECORD						SERVICE RECORD						
STATION	ELEVATION		DEPTH	MANHOLE	4-INCH "Y" BRANCHES		No. of Permit		House Number		DATE OF PERMITS	
	GROUND	GRADE			North West	South East	North West	South East	North West	South East	North West	South East
LATERAL 360, SOUTHWEST INTERCEPTOR SEWER (CONTINUED FROM N-214)												
1+00	165.50	150.30	15.2				97-11467	97-83787	1829 LARK	10614 WESTPORT	7-1-97	5-20-97
2+00								99-00370		10702 WESTPORT		8-6-99
	164.90	151.13 out	13.8	2+04.0 = 0+00 L-3A								
	164.90	151.23 in	13.7									
3+00	163.50	151.61	11.9				97-11461-7		1833 LARK CT		7-1-97	
4+00												
	163.00	152.04	11.0	4+06.44	4" NW 152.37							
0+00 L-3A	165.22	151.28	13.9		0+15.0 4" SE 155.33		97-8373-7	97	1825 LARK CR	10610 WESTPORT	5-20-97	11-7-97
	164.90	155.00	9.9	0+60.7				99-00231		10606 WESTPORT		9-9-99
0+00 L-4	162.40	149.10	13.3	0+00 = 8+79.37 L-2								
1+00	164.20	149.50	14.7									
	164.30	148.88 out	15.4	1+96.0								
	164.30	149.98 in	14.3									
2+00												
					2+94.0 4" PVC 40	4" SCH 40 2746.6	96-11652-7	97-01130	1828 LARK CT	10510 WESTPORT	9-27-96	11-5-99
3+00	163.20	150.00	13.2									
						4" SCH 40 3+16.0	96-11658-7	2000 00935	1832 W LARK CT	10506 WESTPORT	9-27-96	4-11-00
4+00	162.30	150.40	11.9					98-7157-7		10502 WESTPORT		4-30-98
	162.20	150.87 out	11.3	4+18.0								
	162.20	150.97 in	11.2			4+75.0 4" PVC	97	97-8855-7	1842 LARK CT	10414 WESTPORT	11-7-97	5-20-97
5+00	161.30	150.90	10.4									
								98-71456-7		10406 WESTPORT		4-30-98
6+00	160.60	151.30	9.3									
	160.80	151.90	8.9	6+50.0	4" SE 152.23			98-71455-7		10402 WESTPORT		4-30-98
0+00 L-4A	165.22	149.98	15.2	0+00 = 1+96.0 L-4			97-17024-7	98-371-7	1824 LARK CT	10614 WESTPORT	9-2-97	12-31-97
	165.10	155.00	10.1	0+61.77	4" NW 155.33		97-16360-7		1820 LARK CT		9-17-97	
LATERAL 67, MAIN 22, WAR INDUSTRIES SEWER												
LINE 1	-0+45.19	220.88	210.50	10.4	-0+45.19							
	0+00	220.40	210.62	9.8								
		221.82	210.86 out	11.0	0+90.35							
		221.82	210.96 in	10.9								
1+00	221.50	211.00	10.5		1+45.4 6" NW 25' 211.28							
					1+70.4 6" SE 25' 211.38		96-18754-7		8700 Bldg W 29th G-4			
2+00	222.50	211.40	11.1									
					3+10.4 6" SE 25' 211.94		96-18755-7		8700 Bldg W 29th G-3		11-8-96	
3+00	223.40	211.80	11.6		3+20.4 6" NW 25' 211.98							
	224.82	212.12 out	12.7	3+79.9	6" N 18' 212.46							
	224.82	212.22 in	12.6									
4+00	224.60	212.30	12.3									
5+00	224.00	212.70	11.3									
	224.26	212.79 out	11.5	5+22.5	6" N 28' 213.17							
	224.26	212.89 in	11.4					96-18752-7		8700 Bldg W 29th G-2		
6+00	223.30	213.20	10.1									
	223.18	213.43	9.8	6+58.0				96-18751-7		8700 Bldg W 29th G-1		
LINE 2	0+00 L-2	217.50	206.66	10.8								
		220.40	207.70 out	12.7	0+76.8			2002 00474		8700 Bldg W 29th G-6		2-21-02
		220.40	207.80 in	12.6								
1+00	220.00	200.11	19.9									
	220.40	209.11	11.3	1+77.5	6" NE 209.38		96-18755-7		8700 Bldg W 29th G-5		11-8-96	
LINE 3	0+00 L-3	220.60	200.07 out	20.5	0+00 EXIST							
		220.60	208.88 in	11.7	OUTSIDE DROP							
		221.15	209.00	12.1	0+30.0	6" SW 209.17	96-18750-7	96-18701-7	8700 Bldg W 29th F	8700 Bldg W 29th ABC	11-8-96	11-5-96
LINE 4	0+00 L-4	224.29	210.13	14.2	0+00							
1+00	222.80	210.53	12.3									
	222.50	210.71	11.8	1+45.0	6" N 210.88	6" W 210.88	97-21273-7		8700 Bldg W 29th B		11-21-97	