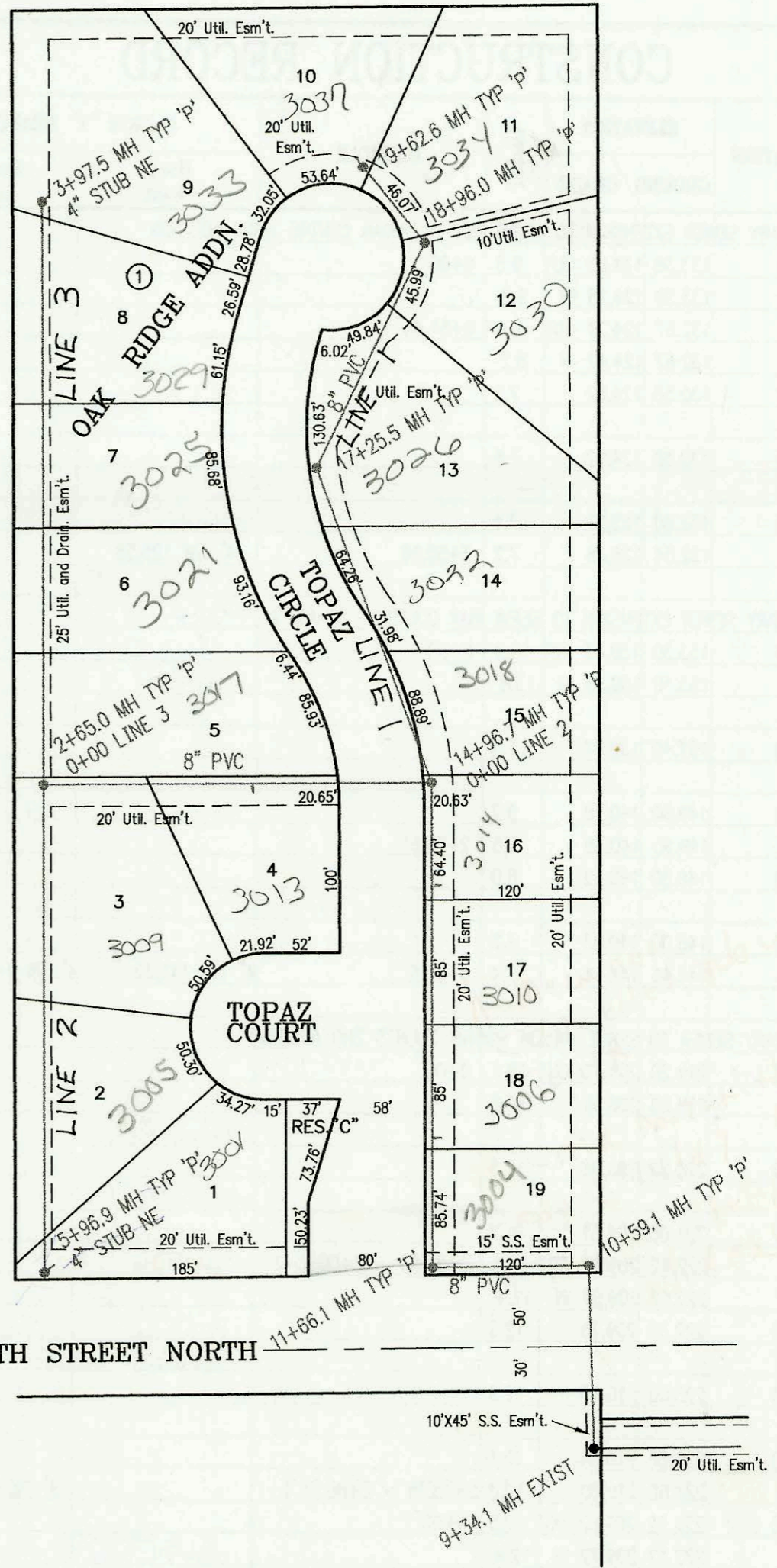


LATERAL 364, SOUTHWEST INTERCEPTOR SEWER  
 PROJECT NO. 468-82554 (742577)  
 BUILT BY W. B. CARTER CONSTRUCTION CO.  
 BOOKED 7/15/96 PER PLAN



SCALE: 1" = 100'



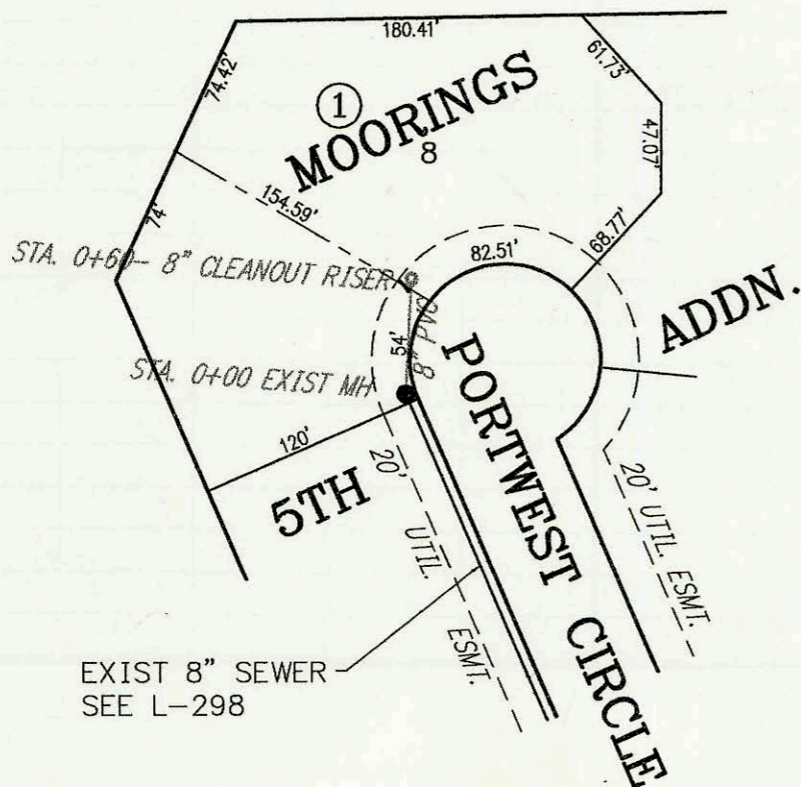
29TH STREET NORTH

SANITARY SEWER EXTENSION TO SERVE LOT 8, BLOCK 1, MOORINGS 5TH ADDITION  
 PRIVATE PROJECT NO. 615PPS (607861)  
 BUILT BY MCCULLOUGH CONSTRUCTION CO.  
 BOOKED 08/02/96 FROM AS BUILTS



SCALE: 1" = 100'

*MAP*



EXIST 8" SEWER  
 SEE L-298

