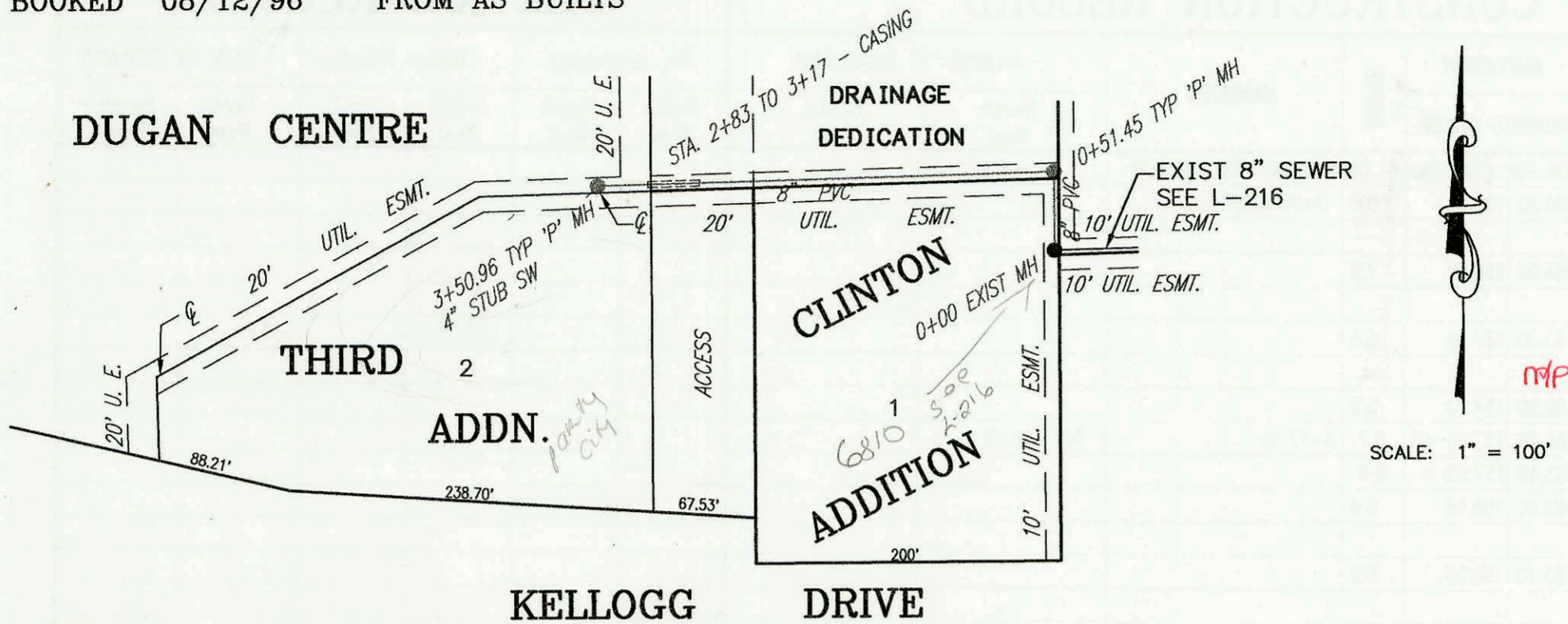
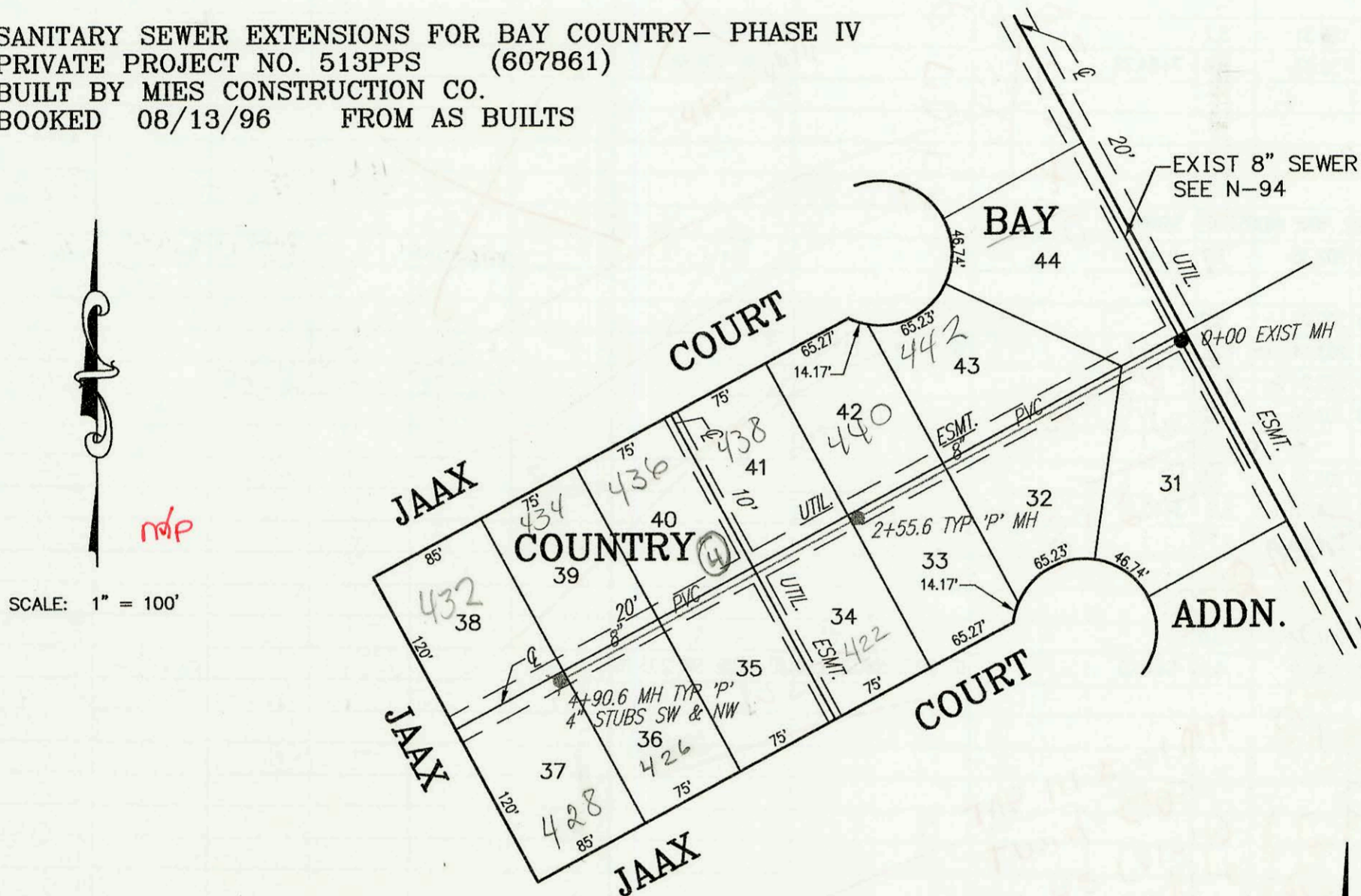


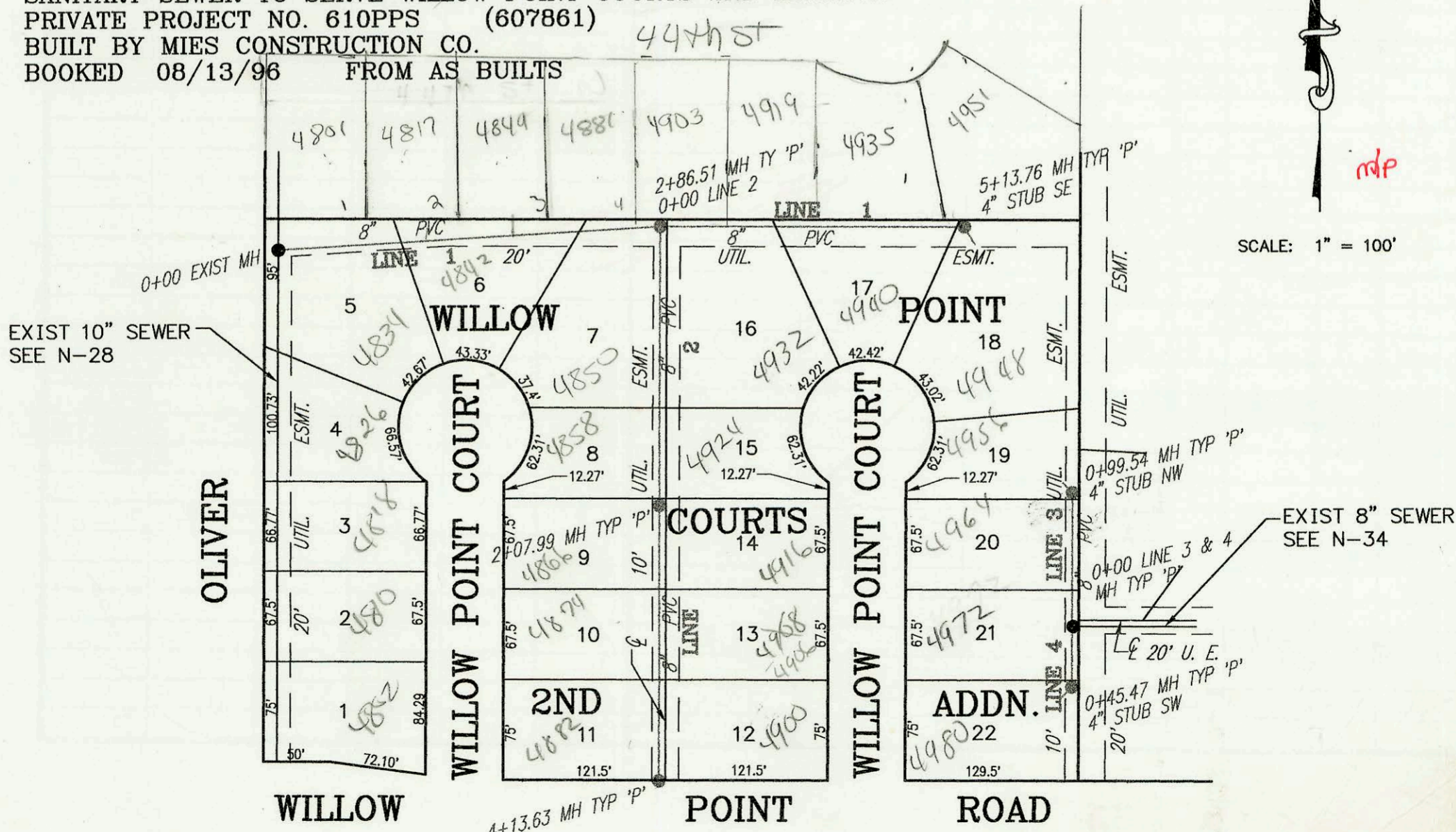
SANITARY SEWER IMPROVEMENTS TO SERVE LOT 2, DUGAN CENTRE THIRD ADDITION  
PRIVATE PROJECT NO. 629PPS (607861)  
BUILT BY MCCULLOUGH CONSTRUCTION CO.  
BOOKED 08/12/96 FROM AS BUILTS



SANITARY SEWER EXTENSIONS FOR BAY COUNTRY- PHASE IV  
PRIVATE PROJECT NO. 513PPS (607861)  
BUILT BY MIES CONSTRUCTION CO.  
BOOKED 08/13/96 FROM AS BUILTS



SANITARY SEWER TO SERVE WILLOW POINT COURTS 2ND ADDITION  
PRIVATE PROJECT NO. 610PPS (607861)  
BUILT BY MIES CONSTRUCTION CO.  
BOOKED 08/13/96 FROM AS BUILTS



CONSTRUCTION RECORD						SERVICE RECORD							
STATION	ELEVATION		DEPTH	MANHOLE	4-INCH "Y" BRANCHES		No. of Permit		House Number		DATE OF PERMITS		
	GROUND	GRADE			North West	South East	North West	South East	North West	South East	North West	South East	
SANITARY SEWER EXTENSION TO SERVE LOT 2, DUGAN CENTRE THIRD ADDITION													
0+00	133.38	124.08 OUT	9.3	0+00									
	133.38	124.18 IN	9.2										
	132.67	124.27 OUT	8.4	0+51.45									
	132.67	124.47 IN	8.2										
1+00	132.50	124.62	7.9										
2+00	132.50	124.92	7.6										
3+00	132.60	125.22	7.4										
	132.54	125.38	7.2	3+50.96	4" SW 125.58								
SANITARY SEWER EXTENSION TO SERVE BAY COUNTRY- PHASE IV													
0+00	153.30	139.43 OUT	13.9	0+00	4" sch 40 H21.0	97-1829-7		442 TAP CT		7-21-97			
	153.30	139.55 IN	13.8										
1+00	151.40	139.87	11.5			97-1829-7		440 TAP CT		1-28-99			
2+00	149.90	140.20	9.7		4" sch 40 2+27.6	97-1829-7	97-883-7	438 TAP CT	420 TAP CT	7-21-98	1-24-97		
	149.85	140.38	9.5	2+55.6		97-18531-7		436 TAP CT		10-20-97			
3+00	148.50	140.52	8.0										
						97-4023-7	97-4877-7	434 TAP CT	420 TAP CT	3-29-97	3-28-97		
4+00	145.00	140.83	4.2										
	144.46	141.11	3.4	4+90.6	4" NW 141.32 4" SW 141.32	97-	96-18454-7	432 TAP CT	428 N TAP CT	2-17-97	10-31-96		
SANITARY SEWER TO SERVE WILLOW POINTS COURTS 2ND ADDITION													
LINE 1 0+00 L-1	219.20	201.10 OUT	18.1	0+00	4" sch 40 0+41	2000 019711	3194	4801 E 44th	4834 Willow Point	8-28-00	8-18-97		
	219.20	208.60	10.6										
1+00	220.50	208.96	11.5		4" sch 40 1+11.0 TAP		3132	4817 E 44th N		4-17-97			
2+00	221.00	209.31	11.7		4" sch 40 2+58.5		3088	4849 E 44th N	4812 Willow Point	3-12-97	1-8-98		
	222.12	209.62 OUT	12.5	2+86.51 = 0+00 L-2			3133	4881 E 44th		4-17-97			
	222.12	209.67 IN	12.4										
3+00	222.30	209.73	12.6		4" sch 40 3+08.5 TAP		3144	4905 E 44th		5-22-97			
					4" sch 40 3+62.5		3145	4919 E 44th		5-22-97			
4+00	223.00	210.13	12.9				3221	4935 E 44th	4940 Willow Point	10-14-97	2-7-00		
5+00	222.60	210.54	12.1										
	222.60	210.60	12.0	5+13.76 = 2+86.51 L-1			3140	4951 E 44th	4947 Willow Point	5-13-97	8-18-97		
LINE 2 0+00 L-2	222.12	209.62 OUT	12.5	0+00	4" sch 40 0+74.0 TAP		3008	4850 Willow Point	4832 Willow Point	7-9-96	5-12-98		
	222.12	209.72 IN	12.4										
1+00	222.90	210.14	12.8		4" sch 40 1+07.0 TAP		3012	4858 Willow Point	4924 Willow Point	7-15-96	2-18-97		
2+00	223.00	210.57	12.4										
	222.89	210.49 OUT	12.4	2+07.99	4" sch 40 2+17.99		3071	4866 Willow Pt. Ct.	4916 Willow Point	12-3-96	9-24-98		
	222.89	210.59 IN	12.3										
3+00	222.60	210.94	11.7				3524	4874 Willow Pt Ct	4905 Willow Point	5-27-99	7-9-98		
					4" sch 40 3+51.6		3054	4882 Willow Point	4905 Willow Point	10-24-96	9-4-98		
4+00	222.50	211.33	11.2										
	221.88	211.38	10.5	4+13.63									
LINE 3 0+00 L-3	217.71	209.26 OUT	8.5	0+00 = 0+00 L-4	4" sch 40 0+74.6 TAP		3006	4964 Willow Point		7-22-96			
	217.71	209.36 IN	8.4										
	220.48	210.08	10.4	0+99.64	4" NW 209.78		3335	4956 Willow Point		9-21-98			
LINE 4 0+00 L-4	217.71	209.26 OUT	8.5	0+00 L-3	4" sch 40 TAP 13.5' W of a MH		3494	4972 Willow Point		1-5-98			
	217.71	209.91 IN	7.8										
	218.37	209.98	8.4	0+45.47			3095	4970 Willow Point		9-30-99			