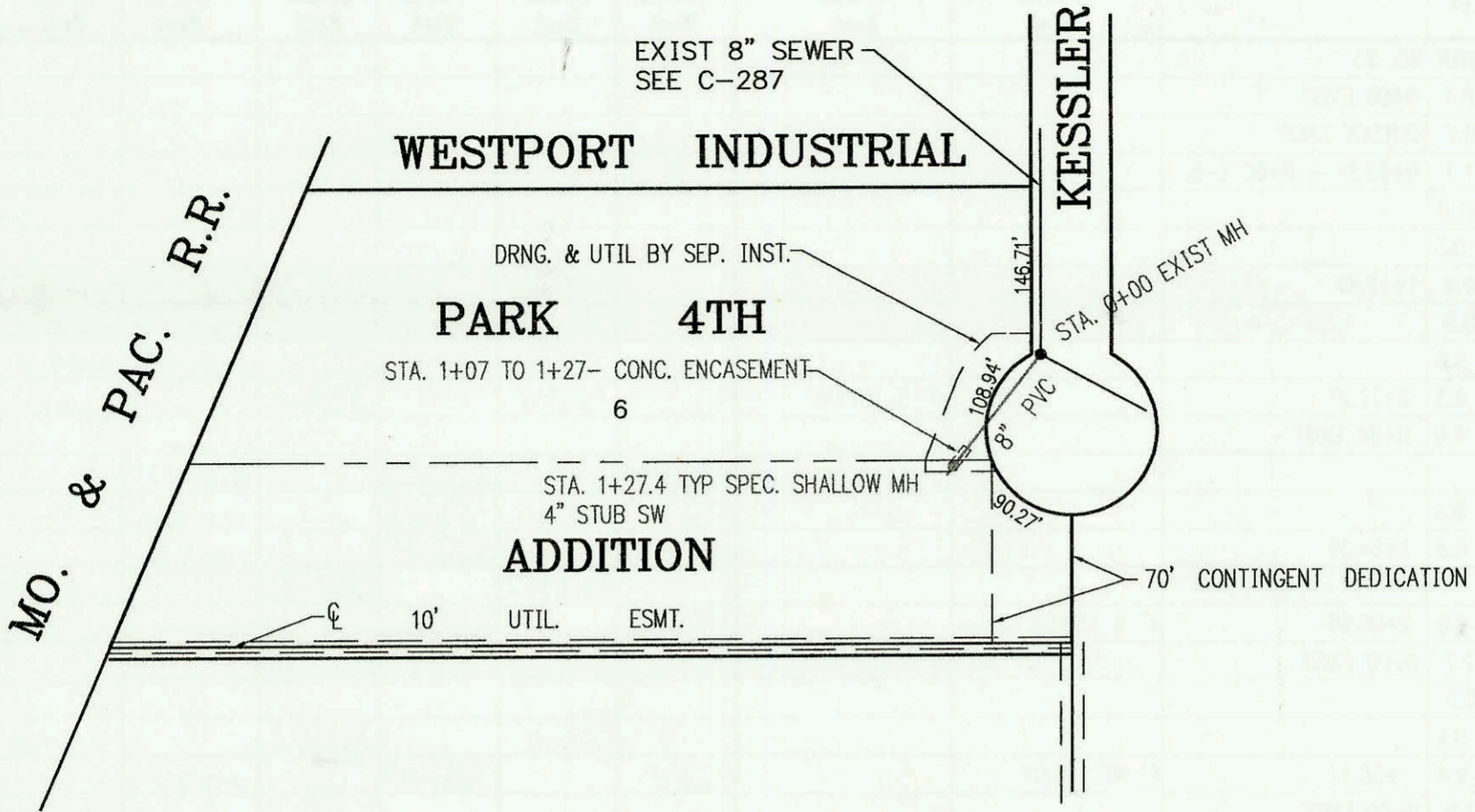


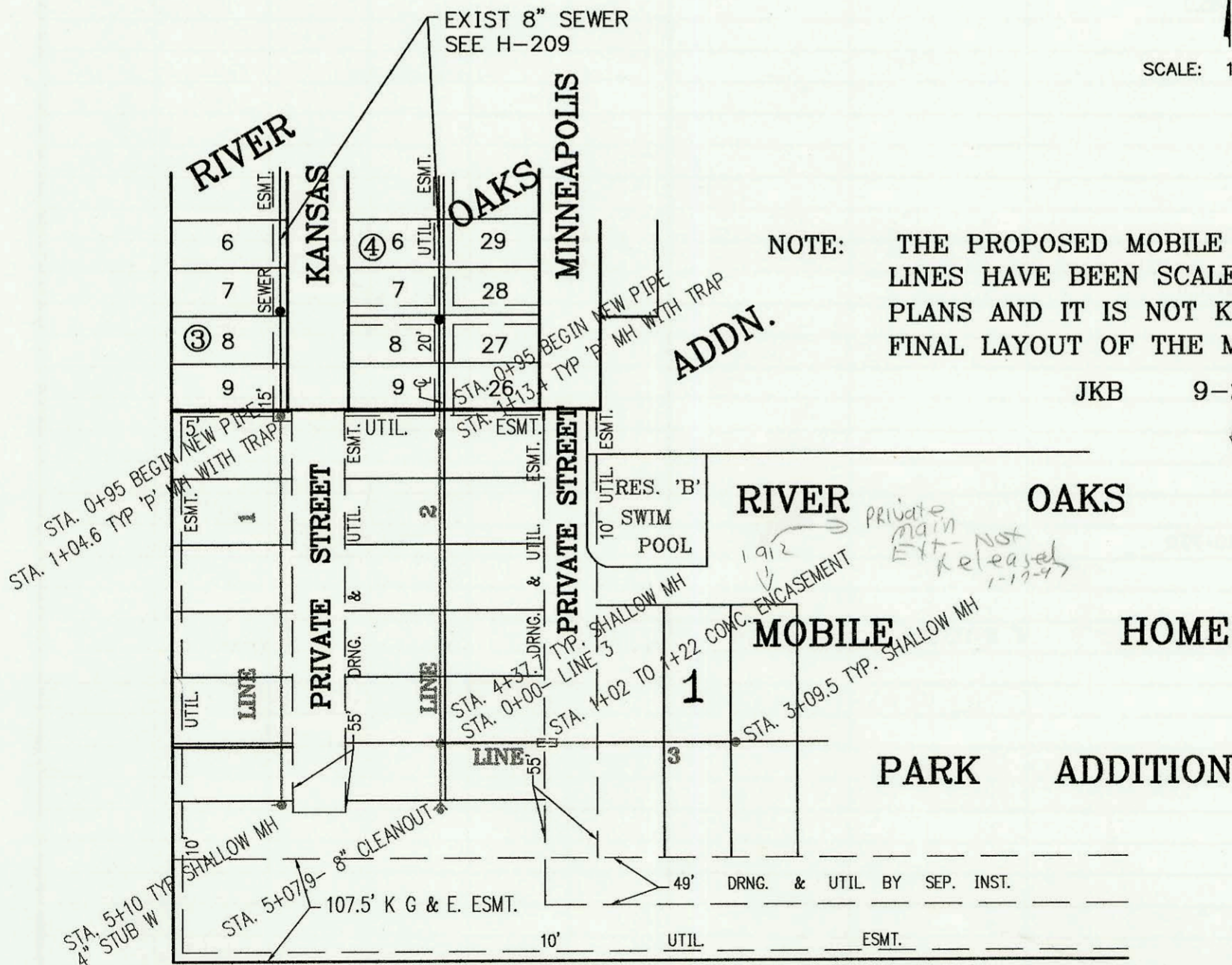
SANITARY SEWER EXTENSION TO SERVE WESTPORT INDUSTRIAL PARK 4TH ADDITION  
 PRIVATE PROJECT NO. 633 PPS (607861)  
 BUILT BY JERRY BOARDMAN ENTERPRISES  
 BOOKED 09/17/96 FROM AS BUILTS



SCALE: 1" = 150'

*MP*

SANITARY SEWER EXTENSIONS SERVING PHASE 1, LOT 1, BLOCK 1,  
 RIVER OAKS MOBILE HOME PARK  
 PRIVATE PROJECT NO. 602 PPS (607861)  
 BUILT BY A PLUS PLUMBING  
 BOOKED 09/17/96 FROM AS BUILTS



NOTE: THE PROPOSED MOBILE HOME SPACE LOT LINES HAVE BEEN SCALED OFF CONSTRUCTION PLANS AND IT IS NOT KNOWN IF THIS IS THE FINAL LAYOUT OF THE MOBILE HOME PARK.

JKB 9-20-96

*Privately Maintained  
 8" Sewer by Mobile Home Park*

SCALE: 1" = 150'

*MP*

CONSTRUCTION RECORD						SERVICE RECORD						
STATION	ELEVATION		DEPTH	MANHOLE	4-INCH "Y" BRANCHES		No. of Permit		House Number		DATE OF PERMITS	
	GROUND	GRADE			North West	South East	North West	South East	North West	South East	North West	South East
SANITARY SEWER EXTENSION TO SERVE WESTPORT INDUSTRIAL PARK 4TH ADDITION												
0+00	103.46	99.28 OUT	4.2	0+00								
	103.46	99.71 IN	3.8									
1+00	103.40	100.50	2.9									
	103.40	100.71	2.7	1+27.4		4" SW 100.71						
SANITARY SEWER EXTENSIONS TO SERVE RIVER OAKS MOBILE HOME PARK ADDITION												
LINE 1	0+00 L-1	77.87	70.26	7.6								
	0+95	78.00	70.41	7.6								
	1+00	78.00	70.42	7.6								
		77.40	70.43 OUT	7.0	1+04.6							
		77.40	70.45 IN	7.0								
	2+00	77.40	70.77	6.6								
	3+00	77.00	71.11	5.9								
	4+00	76.70	71.45	5.3								
	5+00	76.70	71.79	4.9								
		76.82	71.82	5.0	5+10	4" W 72.11						
LINE 2	0+00 L-2	77.83	69.54	8.3								
	0+95	77.20	70.06	7.1								
	1+00	77.20	70.09	7.1								
		77.20	70.16 OUT	7.0	1+13.4							
		77.20	70.17 IN	7.0								
	2+00	76.70	70.41	6.3								
	3+00	76.40	70.77	5.6								
	4+00	76.60	70.99	5.6								
		77.61	71.12 OUT	6.5	4+42.7 = 0+00 L-3							
		77.61	71.19 IN	6.4								
	5+00	77.00	71.30	5.7								
	5+12.9	77.21	71.33	5.9								
LINE 3	0+00 L-3	77.61	71.12 OUT	6.5	0+00 = 4+42.7 L-2							
		77.61	71.17 IN	6.4								
	1+00	75.80	71.47	4.3								
	2+00	75.70	71.78	3.9								
	3+00	76.00	72.08	3.9								
		76.56	72.11	4.4	3+09.5							