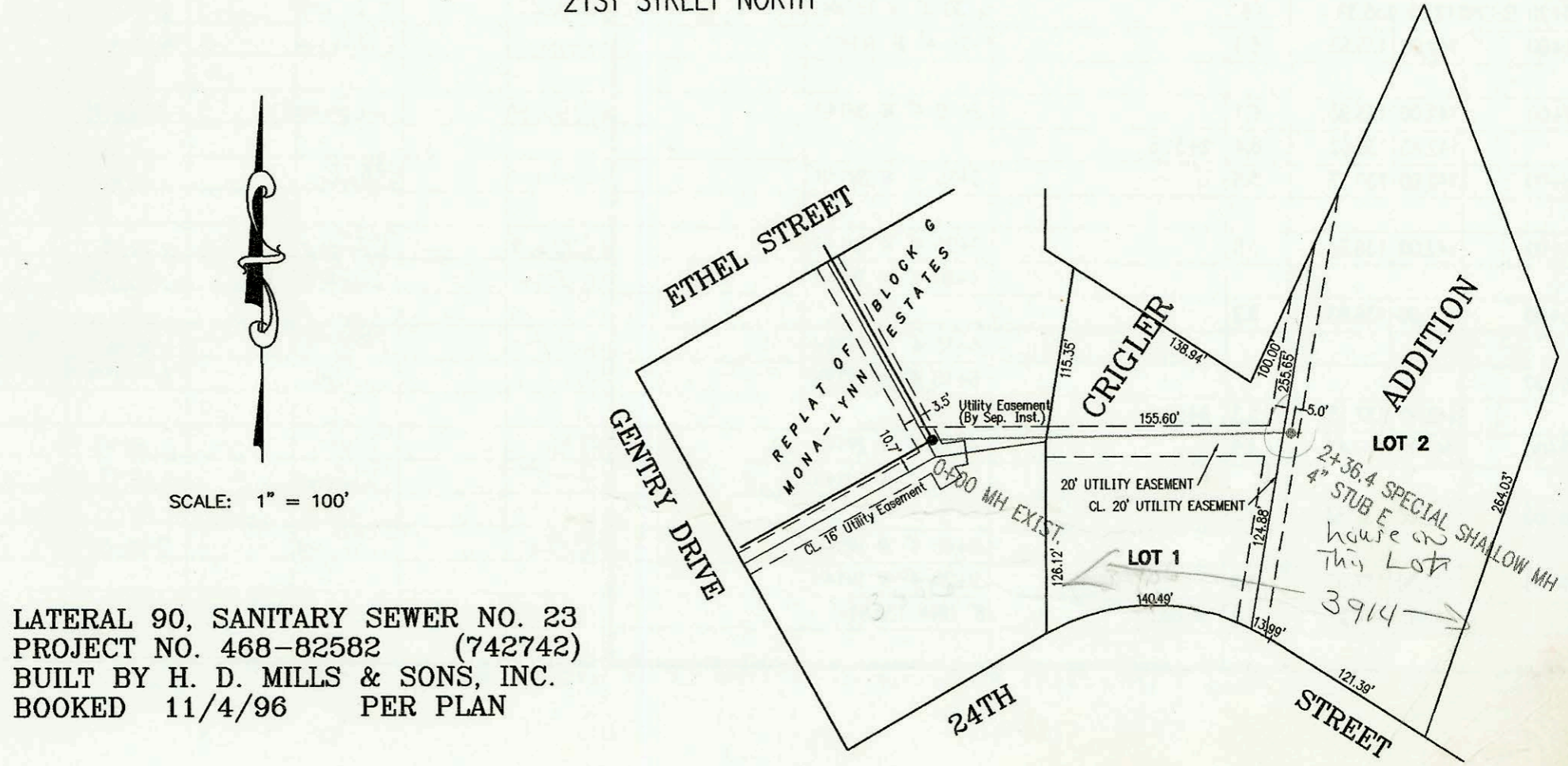


LATERAL 4, MAIN 16, SOUTHWEST INTERCEPTOR SEWER
 PROJECT NO. 468-82596 (742692)
 BUILT BY NOWAK CONSTRUCTION CO.
 BOOKED 11/4/96 PER PLAN



LATERAL 90, SANITARY SEWER NO. 23
 PROJECT NO. 468-82582 (742742)
 BUILT BY H. D. MILLS & SONS, INC.
 BOOKED 11/4/96 PER PLAN

CONSTRUCTION RECORD						SERVICE RECORD							
STATION	ELEVATION		DEPTH	MANHOLE	4-INCH "Y" BRANCHES		No. of Permit		House Number		DATE OF PERMITS		
	GROUND	GRADE			North West	South East	North West	South East	North West	South East	North West	South East	
LATERAL 4, MAIN 16, SOUTHWEST INTERCEPTOR SEWER													
LINE 1	0+00 L-1	136.50	119.95 out	16.6	0+00								
		136.50	120.53 in	16.0		0+35 4" N 13V14H		98-21657		2395-37 Lighthouse Cove		11-11-98	
1+00		139.70	121.33	18.4									
		140.20	121.71 out	18.5	1+47.6								
2+00		140.20	125.71 in	14.5		1+85 4" SE 11V0H		97-1771-7		2302-4 Lighthouse Cove		5-15-97	
		140.50	125.97	14.5									
3+00		140.60	126.47	14.1		3+00 4" SE 11V6H		97-928-7		2308-10 Lighthouse Cove		6-11-97	
		140.80	126.56	14.2	3+16.6								
4+00		141.00	126.98	14.0									
		141.00	127.07 out	13.9	4+20.1	4" E 10V7H		97-4620-7		2314-16 Lighthouse Cove		3-17-97	
LINE 2		141.00	127.27 in	13.7									
		141.10	127.58	13.5	4+82.1 CLEANOUT	4" WYE 10V7H		97-21905-7		2353 Lighthouse Cove		12-16-97	
0+00 L-2	140.20	121.91	18.3	0+00 = 1+47.2 L-1									
1+00		139.70	122.31	17.4		0+50 4" E 14V5H		96-1896-7		2352-60 Lighthouse Cove		11-13-96	
		139.80	122.47	17.3	1+40.8	4" SE 13V5H		96-1895-7		2352-54 Lighthouse Cove		11-13-96	
LINE 3	0+00 L-3	140.80	121.91	18.9	0+00 = 4+20.1 L-1								
LINE 4		140.90	127.44	13.5	0+62.0 CLEANOUT	4" WYE SW 10V4H	4" WYE NE 10V4H		97-16109-7		2341-49 Lighthouse Cove		9-22-97
	0+00 L-4	137.70	120.56 out	17.1	0+00 L-4								
1+00		137.70	125.18 in	12.5		0+30 4" S 9V2H							
		140.00	125.58	14.4									
2+00		141.00	125.98	15.0		1+25 4" S 11V3H		97-17056-7		2371-73 Lighthouse Cove		9-29-97	
		140.80	126.34	14.5	2+90.5	2+10 4" S 11V4H		97-4848-7		2365-67 Lighthouse Cove		2-31-98	
3+00		140.50	126.38	14.1		3+10 4" S 10V0H		98-14080-7		2351-61 Lighthouse Cove		7-3-98	
		139.50	126.78	12.7									
4+00		140.40	126.91 out	13.5	4+33.1	4" NE 9V 4" H		97-14957-7		2338-40 Lighthouse Cove		7-15-97	
		140.40	127.11 in	13.3		4+60 4" E 9V5H		97-5713-7		2332-34 Lighthouse Cove		4-8-97	
5+00	139.50	127.38	12.1										
6+00		140.00	127.78	12.2		5+75 4" E 8V5H							
		140.40	128.01	12.4	6+58.1	4" SE 8V6H		97-8894-7		2320 Lighthouse Cove		10-24-97	
LINE 5	0+00 L-5	132.79	118.85	13.9	0+00 EXIST MH								
		132.79	124.85	7.9	OUTSIDE DROP								
0+23.5	132.40	125.09	7.3	0+23.5	6" NW 125.42	6" NE 125.42		97-8591-7		6200 W 2105		5-7-94	
LATERAL 90, SANITARY SEWER NO. 23													
0+00	180.65	173.40	7.3	0+00 EXIST									
1+00	178.30	173.70	4.6										
2+00		177.50	174.00	3.5									
		177.50	174.11	3.4	2+36.4	4" STUB E 174.44		2053 02331		3714 W 344A		9-5-03	
* 2302-4 Lighthouse Cove - D.L. tied onto Riser 3' under driveway													