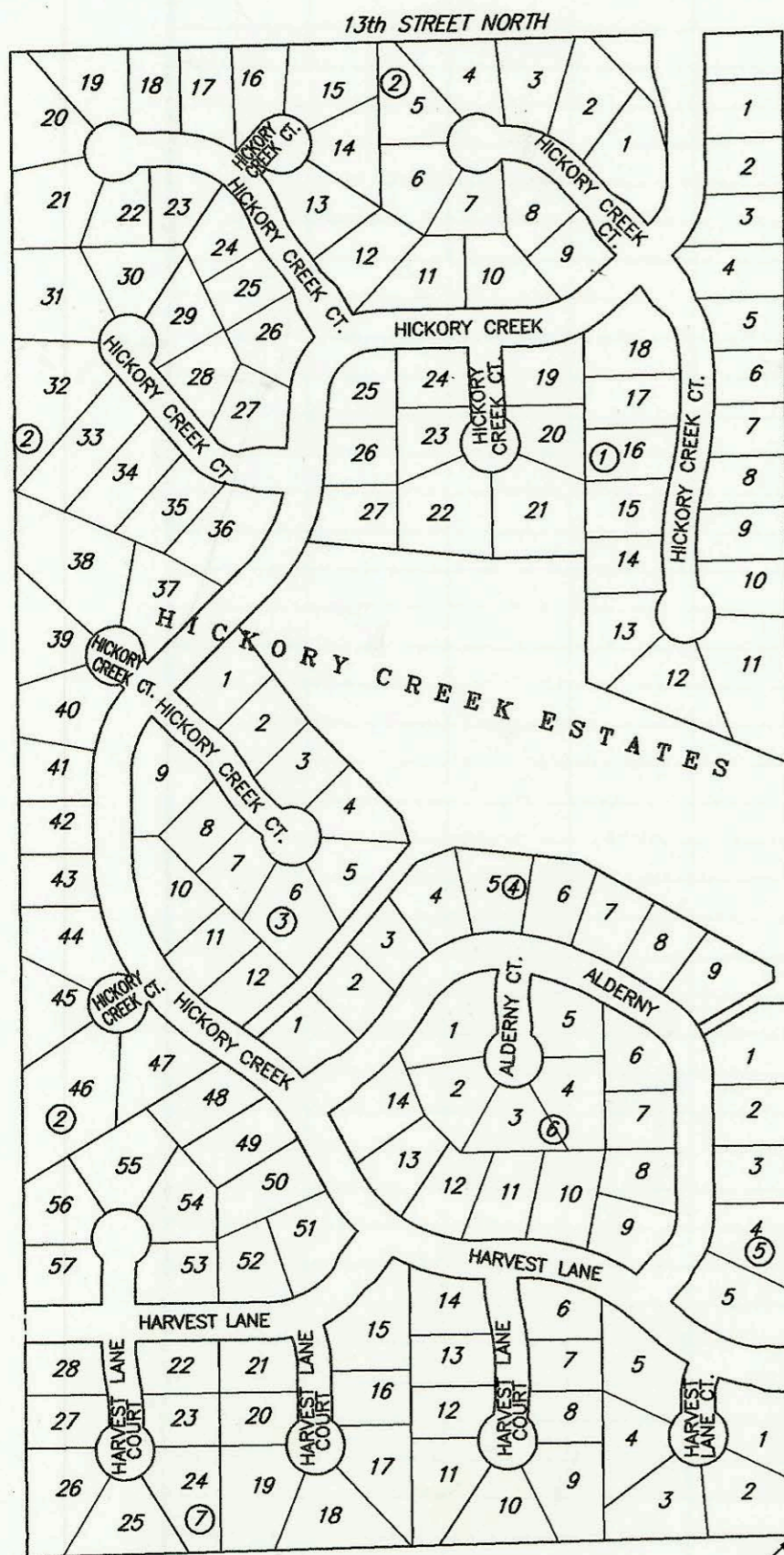


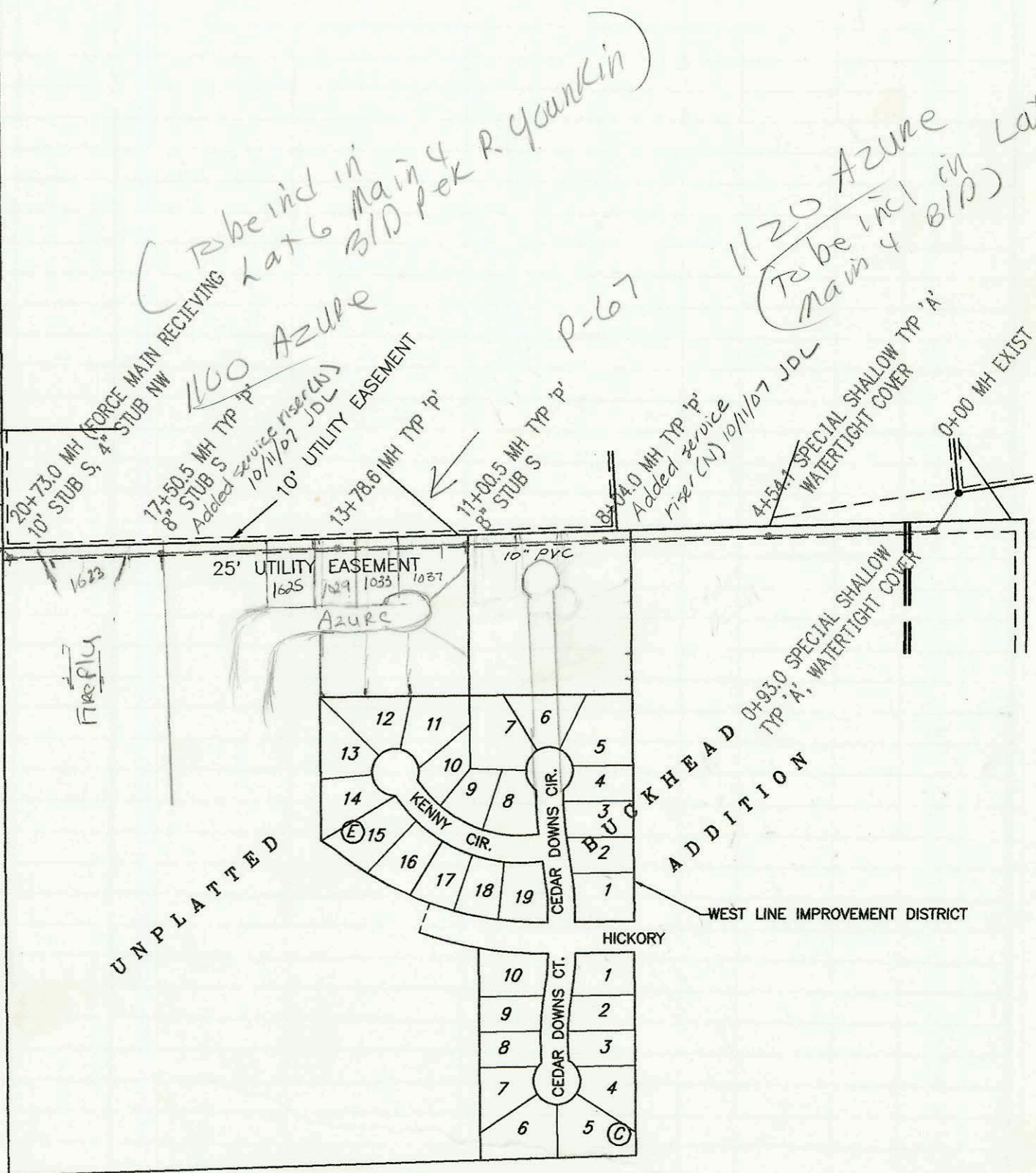


SCALE: 1" = 300'

MAIN 18, SOUTHWEST INTERCEPTOR SEWER  
PROJECT NO. 468-82560 (742585)  
BUILT BY UTILITY CONTRACTORS INC.  
12/19/96 PER PLAN



N.W. COR., SE1/4,  
SEC. 13, T27S, R2W



UNPLATED

ADDITION

WEST LINE IMPROVEMENT DISTRICT

1125

CONSTRUCTION RECORD					SERVICE RECORD							
STATION	ELEVATION		DEPTH	MANHOLE	4-INCH "Y" BRANCHES		No. of Permit		House Number		DATE OF PERMITS	
	GROUND	GRADE			North West	South East	North West	South East	North West	South East	North West	South East
MAIN 18, SOUTHWEST INTERCEPTOR SEWER												
0+00	144.90	141.56	3.3	0+00 EXIST								
	146.00	141.75 out	4.3	0+93.0								
	146.00	141.85 in	4.1									
1+00	145.70	141.86	3.8									
2+00	145.90	142.06	3.8									
3+00	146.10	142.26	3.8									
4+00	146.30	142.46	3.8									
	146.80	142.57	4.2	4+54.1								
5+00	146.50	142.66	3.8									
6+00	146.60	142.86	3.7									
7+00	147.70	143.06	4.6									
8+00	150.50	143.27	7.2	8+04.0	Added service riser for 1120 Azure (10/11/07)							
9+00	154.00	143.46	10.5				2000-02397	1037 N AZURE CIR			10-12-98	
10+00	160.20	143.66	16.5									
	162.70	143.86	18.8	11+00.5	8" S 144.03							
					4" SCH 40 11+55 4" S 10.5V							
12+00	161.70	144.06	17.6									
					4" SCH 40 12+63.5 4" S 8.5V		99-00911	1033 AZURE			10-14-99	
13+00	160.30	144.26	16.0				99-00912	1029 AZURE			10-14-99	
	159.60	144.42	15.2	13+78.6	4" SCH 40 13+44 4" S 7.5V							
14+00	159.10	144.46	14.6		14+17.5 4" S 7.0V							
15+00	159.00	144.66	14.3		4" SCH 40 15+06 4" S 6.5V		2000-00281	1025 N AZURE				
16+00	159.00	144.86	14.1		4" SCH 40 Saddle 15+83.5		2000-00575	1021 N AZURE			11-27-00	
					16+51.0 6.5V							
17+00	159.60	145.06	14.5									
	160.10	145.16	14.9	17+50.5	Added service riser for 1100 Azure (10/11/07)							
18+00	159.80	145.26	14.5		8" S 145.33							
					18+28 4" S 6.5V							
19+00	159.80	145.46	14.3									
					19+97 4" S 6 V		2002-00376	1023 Fletch			2-13-02	
20+00	159.40	145.66	13.7									
	159.40	145.81	13.6	20+73.0 OUTSIDE DROP	4" NW 155.00	10" S 145.91						