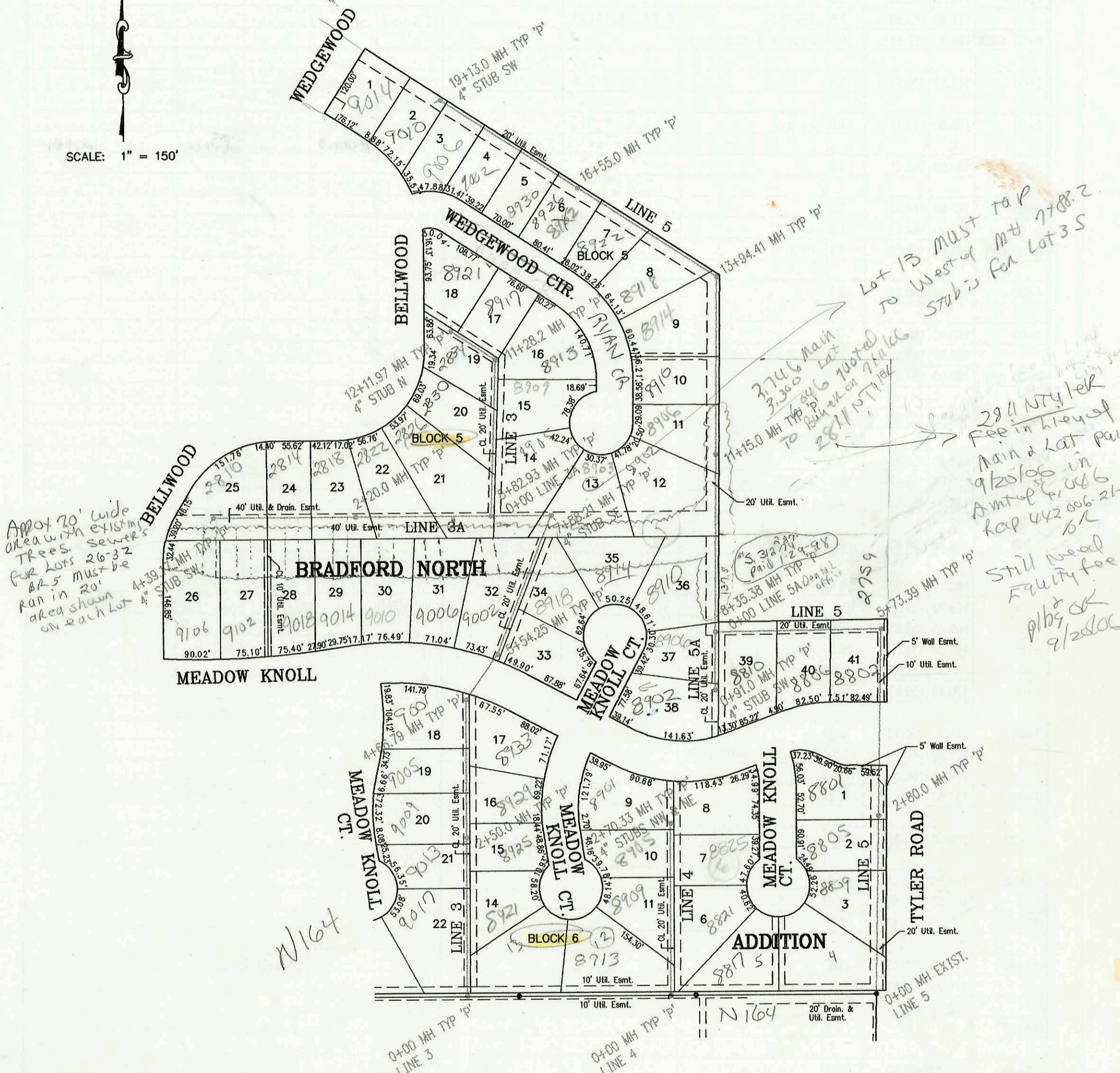


LATERAL 123, WESTLINK INTERCEPTOR SEWER  
PROJECT NO. 468-82566 (742767)  
BUILT BY NOWAK CONSTRUCTION CO.  
1/21/97 PER PLAN



Approx 20' wide  
area with existg  
trees  
for lots 26-32  
87.5' must be  
run in 20'  
area shown  
on each lot

Lot 13 must tap  
to west of MH 7788.2  
stubs for Lot 35

3746 Main  
3300 Lot  
to Bank on 7 miles  
2811 N Tyler

2811 N Tyler  
Fee in lieu of  
Main & Lat paid  
9/20/06 in  
amt of \$4,006.25  
for  
Still need  
Equity fee  
p/b/c  
9/28/06

N164

N164

CONSTRUCTION RECORD						SERVICE RECORD						
STATION	ELEVATION		DEPTH	MANHOLE	4-INCH "Y" BRANCHES		No. of Permit		House Number		DATE OF PERMITS	
	GROUND	GRADE			North West	South East	North West	South East	North West	South East	North West	South East
LATERAL 123, WESTLINK SEWER (CONT. FROM N-237)												
0+00 L-1B	165.90	158.47	7.4	0+00 = 4+91.61 L-1	4" SCH 40 PVC at 76 saddle	2001-02178			9230 W Meadow Knoll			8-31-01
	166.60	158.69	7.9	0+54.0	4" STUB SE 169.02	97-113077			9230 W Meadow Knoll			7-8-97
0+00 L-1C	167.60	160.53	7.1	0+00 = 11+12.39 L-1								
1+00	167.80	160.93	6.9									
2+00	168.50	161.33	7.2		1+81.9 4" SCH 40 at 27.82	97-88147	99-00841	4206 Meadow Knoll	9155 Bellwood		5-2-97	10-5-99
	169.30	161.69	7.6	2+89.92	4" STUB SW 162.02	2000-01395		9202 Meadow Knoll	9147 Bellwood		6/10/00	
0+00 L-1D	169.00	161.47	7.5	0+00 = 13+93.71 L-1		97-123587	98-81747	9202 Meadow Knoll			7-23-97	5-15-98
1+00	168.30	161.87	6.4		4" SCH 40 0+58.0		97-19507		9121 Ryan Ct			11-4-97
2+00	167.80	162.27	5.5			98-170027		2818 Keith Ct			9-9-98	
	167.90	162.45	5.4	2+43.75				2818 Keith Ct				
3+00	168.70	162.67	6.0					925 Ryan Ct				3-20-98
	169.30	162.72	6.6	3+11.92	4" SCH 40 East column			9129 Ryan Ct			see below	6/3/01
0+00 L-1E	169.00	161.47	7.5		4" STUB NE 163.05		98-4517					3-18-98
	169.40	161.64	7.8	0+43.02	4" STUB SW 161.97		97-139537	2811 Bellwood Ct				8-1-97
0+00 L-2	167.30	156.75	10.6	0+00 EXIST				9851 Meadow Knoll				11-25-98
1+00	167.80	157.15	10.7									
	168.60	157.28 out	11.3	1+31.31								
	168.60	157.38 in	11.2									
2+00	168.60	157.65	11.0									
	169.60	157.92 out	11.7	2+66.37	4" SCH 40 STUB SE 158.45		97-92567		9239 Meadow Knoll			6-2-97
	169.90	158.12 in	11.8									
3+00	168.50	158.25	10.3									
4+00	167.50	158.65	8.9									
	166.70	158.84 out	7.9	4+47.37 = 0+00 L-2A		97-	98-41917	9251 Meadow Knoll	9213 Meadow Knoll		12-22-97	3-16-98
	166.70	158.94 in	7.8									
5+00	166.60	159.15	7.5			98-17117		9113 Meadow Knoll			10-7-98	
	167.20	159.31 out	7.9	5+39.13			97-217227		9217 Meadow Knoll			12-3-97
	167.20	159.41 in	7.8									
6+00	167.00	159.65	7.4									
							97-74507	9105 Meadow Knoll				8-21-97
7+00	167.50	160.05	7.4									
	168.40	160.32 out	8.1	7+67.48 = 0+00 L-2B								
	168.40	160.42 in	8.0									
8+00	168.30	160.55	7.8				97-143247		9033 W Meadow Knoll			8-18-97
9+00	168.80	160.95	7.9		4" SCH 40 9+13.48		2000-01627	9225 Meadow Knoll				3-15-00
	169.50	161.17	8.3	9+55.48	4" STUB SW 161.5	4" STUB SE 161.5	98-69897	98-15997	9229 Meadow Knoll	9035 Meadow Knoll		7-14-00
0+00 L-2A	166.70	158.94	7.8	0+00 = 4+47.37 L-2	4" SCH 40 0+11.6		2000-01491	9101 W Meadow Knoll	9209 Meadow Knoll		4-20-98	8-26-97
	166.40	159.17	7.2	0+57.31	4" STUB W 159.57		99-32947				6-22-00	3-7-97
0+00 L-2B	168.40	160.42	8.0	0+00 = 7+67.48 L-2	4" SCH 40 0+19.5			97-01146	9033 Meadow Knoll			11-9-99
	169.00	160.63	8.4	0+52.0	4" NE STUB 160.96			97-21257	9033 Meadow Knoll			12-3-97
0+00 L-3	168.60	159.77	8.8	0+00								
1+00	168.70	160.07	8.6		4" SCH 40 0+20		97-01144	97-29157	9011 Meadow Knoll	8921 Meadow Knoll		11-9-99
2+00	169.20	160.37	8.8				97-11967		9029 Meadow Knoll			7-8-97
	169.90	160.52	9.4	2+50.0	4" SCH 40 3+00.0		97-00782		9013 Meadow Knoll			9-28-99
	169.90	160.67	9.2				2000-00372		9009 Meadow Knoll			2-10-00
3+00	169.90	160.67	9.2				98-95567		9105 Meadow Knoll			5-21-98
4+00	170.40	160.97	9.4									
	171.00	161.17 out	9.8	4+66.79	4" SCH 40 4+25.19		99-01145	98-85597	9056 Meadow Knoll	8933 Meadow Knoll		11-9-99
	171.00	161.27 in	9.7									
5+00	170.20	161.37	8.8									
	171.00	161.53 out	9.5	5+54.25								
	171.00	161.63 in	9.4									
6+00	170.40	161.77	8.6									
7+00	173.00	162.07	10.9									
	170.40	162.33 out	8.1	7+88.21	4" SCH 40 7+70-4" sch	4" STUB SE 162.76	98-62977	97-176197	9052 Meadow Knoll	8918 W Meadow Knoll		4-21-98
	170.40	162.43 in	8.0				0-2004 (10' dia. pipe)		9003 Ryan			1-27-04
	170.40	162.43 in	8.0				97-163587		8914 W Meadow Knoll			9-17-97
8+00	169.90	162.46	7.4									
	169.70	162.71 out	7.0	8+82.93 = 0+00 L-3A								
	169.70	162.81 in	6.9						8905 Ryan Ct			6-24-97
9+00	169.40	162.86	6.5									

CONT. ON N-239 2001-01465-6113/01-9129 W Ryan Ct - Mies Const - 4" SCH 40 2H22 + 2H45