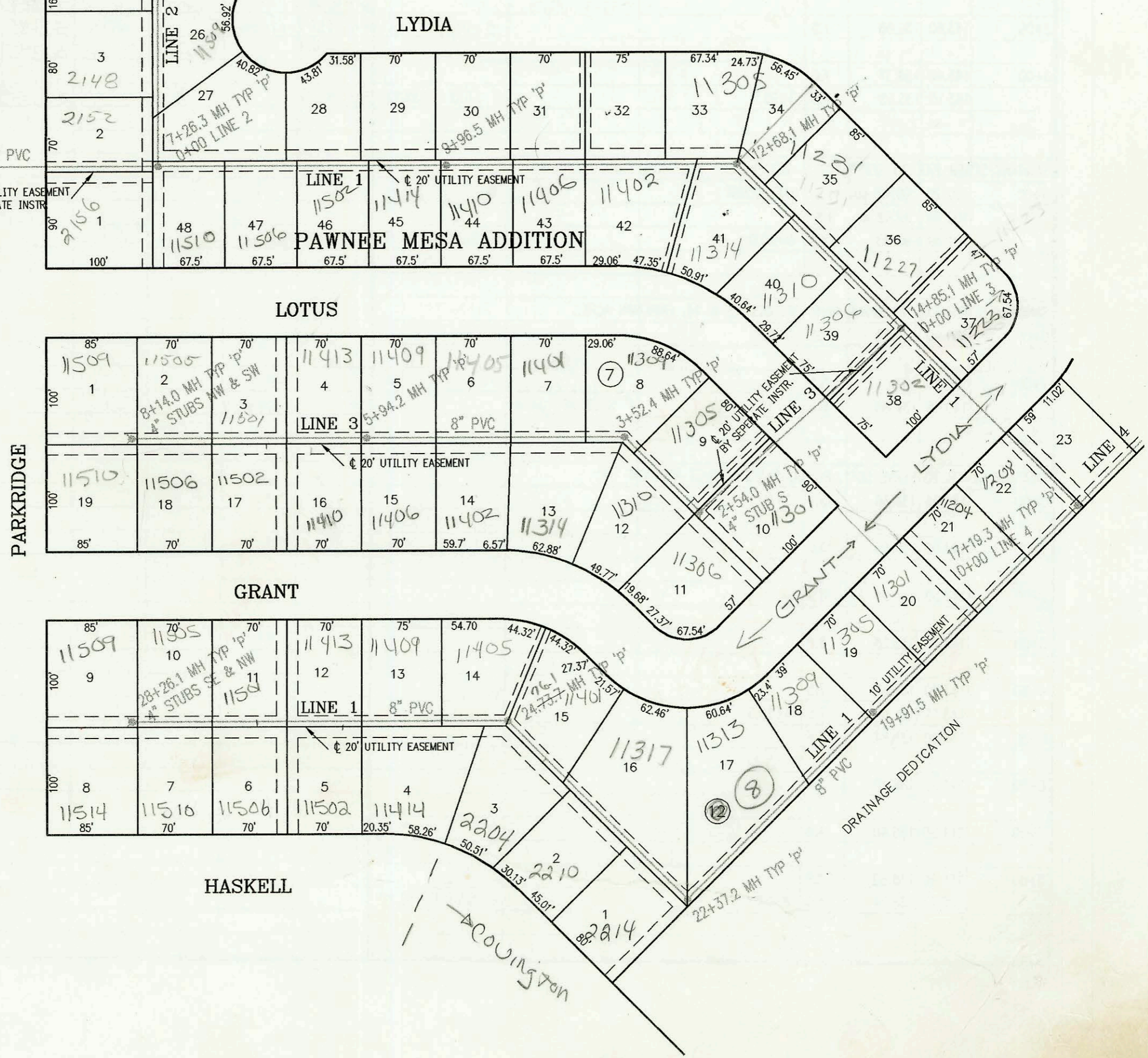
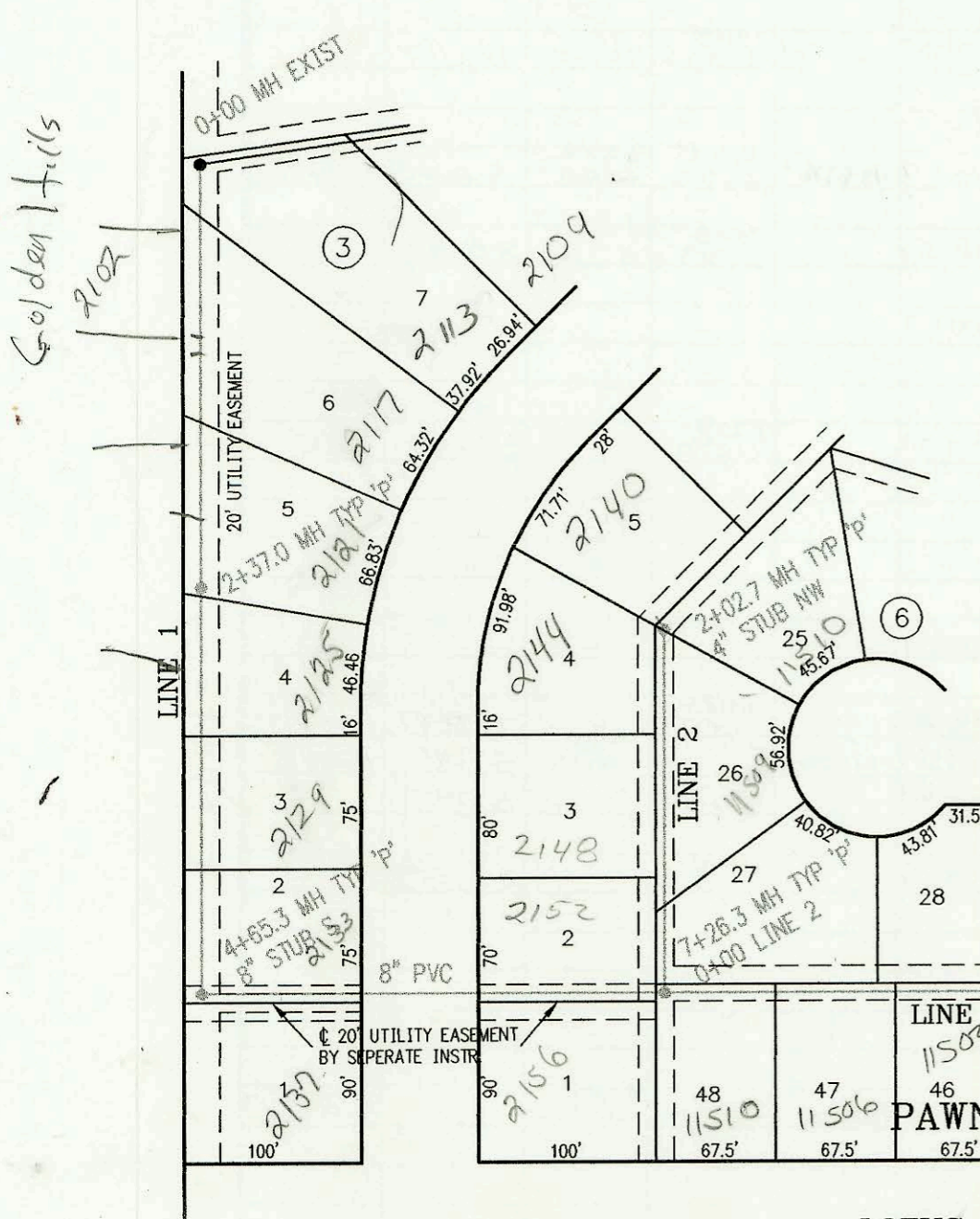
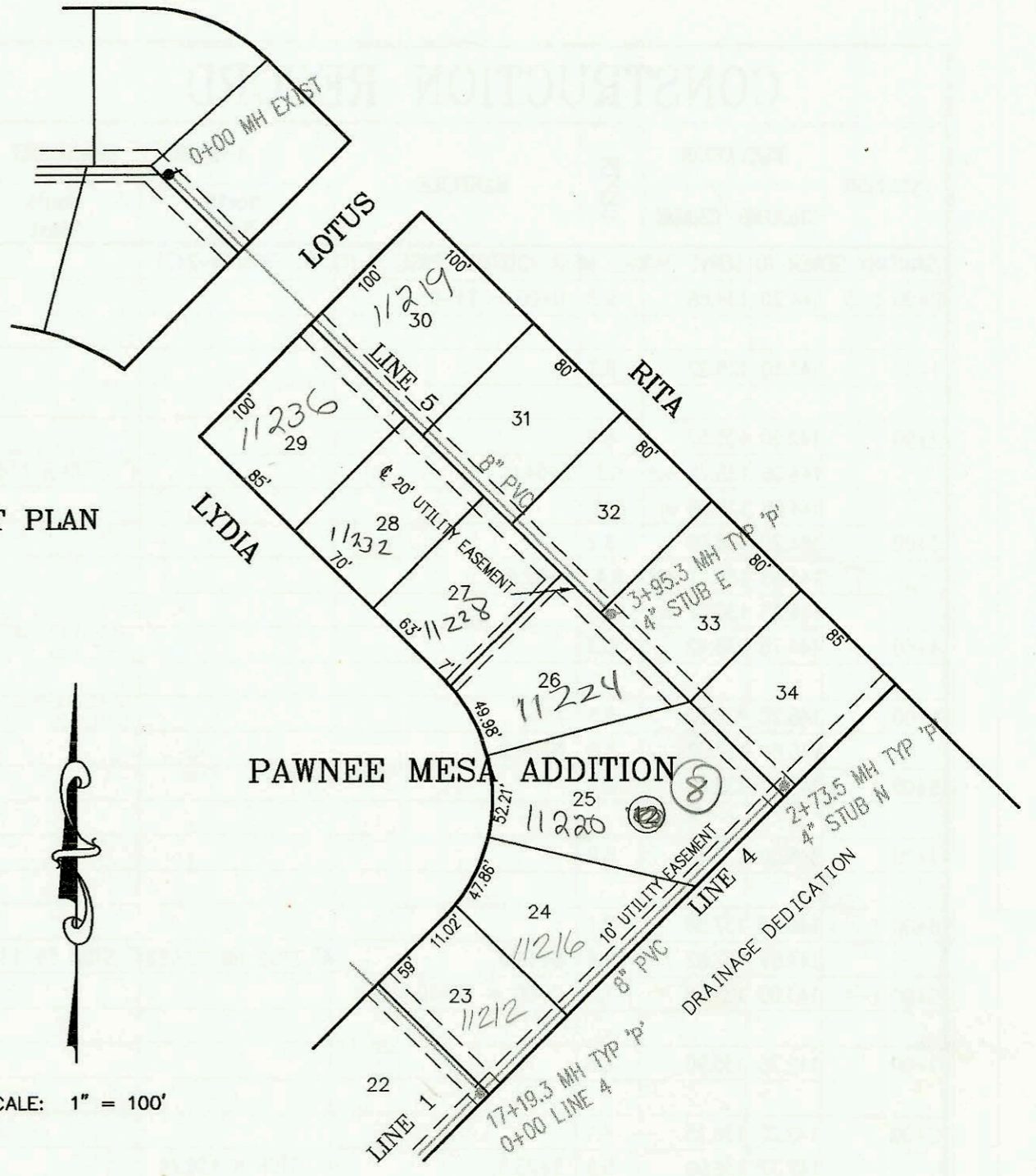


RITA

SANITARY SEWER TO SERVE
PAWNEE MESA ADDITION (PHASE 3)
PROJECT NO. 604PPS (607861)
BUILT BY MEIS CONSTRUCTION CO.
BOOKED 1/27/97 PER AS BUILT PLAN



CONSTRUCTION RECORD					SERVICE RECORD							
STATION	ELEVATION		DEPTH	MANHOLE	4-INCH "Y" BRANCHES		No. of Permit		House Number		DATE OF PERMITS	
	GROUND	GRADE			North West	South East	North West	South East	North West	South East	North West	South East
SANITARY SEWER TO SERVE PAWNEE MESA ADDITION (PASE 3)												
0+00 L-1	145.59	130.42	15.2	0+00 EXIST								
1+00	146.60	130.68	15.9		1+00 4" W 11 V 30 H		97-14504-7	2121 PARKRIDGE			8-20-97	
2+00	147.80	130.94	16.9		1+06 4" W 11 V 30 H			2122 GARDENHILLS		6-20-93		
	148.58	131.04	17.5	2+37.0	1+99.4 4" W 11 V 30 H			2123 GARDENHILLS		5-14-93		
3+00	147.90	131.26	16.6				98-5902	2124 PARKRIDGE			1-7-98	
4+00	147.40	131.62	15.8				98-581-7	2123 PARKRIDGE			1-7-98	
	147.37	131.85	15.5	4+65.3								
5+00	147.00	131.94	15.1									
6+00	146.50	132.19	14.3									
7+00	147.80	132.44	15.4									
	148.18	132.51	15.7	7+26.3 = 0+00 L-2			97-5619-7	11510 LOTUS			4-4-97	
8+00	147.50	132.76	14.7				97-5618-7	11500 LOTUS			4-4-97	
						8+91.5 4" sch 40	97-11507-7	11592 LOTUS			7-9-97	
9+00	147.00	133.11	13.9									
	146.73	133.44 out	13.3	9+96.5		9+57.9 4" sch 40	97-11505-7	11414 LOTUS			7-9-97	
	146.73	133.52 in	13.2				97-1391-7	11410 LOTUS			5-5-97	
10+00												
11+00	145.80	133.45	12.4									
						11+52.0 4" sch 40	97-11501-7	11402 LOTUS			7-9-97	
12+00	145.40	133.38	12.0									
	145.23	134.17 out	11.1	12+68.7		12+86.1 4" sch 40 PVC	97-11362-7	11314 LOTUS			7-9-97	
	145.23	134.20 in	11.0				97-7324-7	11231 Lydia		5-5-97	5-5-97	
13+00	144.80	134.29	10.5				97-7326-7	11227 Lydia	11306 LOTUS		5-5-97	5-5-97
14+00	144.40	134.59	9.8				97-7328-7	11223 Lydia			5-5-97	
	144.20	134.84	9.4	14+85.1 = 0+00 L-3								
15+00	143.90	134.88	9.0			15+19.1 4" sch 40 PVC	97-11361-7	11302 LOTUS			7-9-97	
16+00	143.30	135.14	8.2									
17+00	143.00	135.41	7.6									
	143.00	135.46 out	7.5	17+19.3 = 0+00 L-4			98-7044-7	11298 Lydia			5-4-98	
	143.00	135.56 in	7.4									
18+00	143.30	135.80	7.5				98-6575-2	11204 Lydia			4-16-98	
19+00	143.50	136.09	7.4				98-12423-7	11301 w Grant			7-8-98	
	143.43	136.36 out	7.1	19+91.5			98-12442-7	11305 Grant			7-8-98	
	143.43	136.44 in	7.0				98-12425-7	11309 w Grant			7-8-98	
20+00	143.50	136.46	7.0									
21+00	143.60	136.75	6.9									
							98-6578-7	11313 Grant			4-16-98	
22+00	143.60	137.03	6.6									
	143.64	137.14 out	6.5	22+37.2		4" SCH 40 DL TAP 22+85.7	97-21973-7	2001-00208 Grant	2214 Covington		12-11-97	1-30-01
	143.64	137.25 in	6.4			4" SCH 40 DL TAP 23+56.2		2001-00201 Grant	2210 Covington			1-30-01
23+00	144.10	137.45	6.6				98-5315-7	11401 Grant			5-15-98	
						4" SCH 40 PVC Saddle 24+28.1		2001-00515 Grant	2204 Covington			3-9-01
24+00	144.50	137.78	6.7									
	145.18	138.03 out	7.1	24+78.7			98-5317-7	11405 Grant			5-15-98	
	145.18	138.10 in	7.1									
25+00	145.20	138.18	7.0									
						4" SCH 40 PVC Saddle 25+75.1	98-2318-7	2001-00516 Grant	11404 Grant	11414 Haskell	5-15-98	3-9-01
26+00	145.70	138.54	7.2									
						4" SCH 40 DL TAP 26+31.1	98-12440-7	2001-01309 Grant	11413 w Grant	11502 Haskell	7-8-98	5-29-01
27+00	146.20	138.90	7.3			4" SCH 40 DL TAP 27+09.1	98-12443-7	2001-01310 Grant	11501 w Grant	11506 Haskell	7-8-98	5-29-01
						4" SCH 40 DL TAP 27+28.6	98-12467-7	2001-01311 Grant	11500 w Grant	11510 Haskell	7-8-98	5-29-01
28+00	146.70	139.27	7.4									
	146.99	139.36 out	7.6	28+26.1		4" SCH 40	98-12444-7	2001-01312 Grant	11501 w Grant	11514 Haskell	7-8-98	5-29-01
0+00 L-2	148.18	132.65	15.5	0+00 = 7+26.3 L-1		4" STUB NW 139.49 4" STUB SE 139.49	97-14506-7	2122 PARKRIDGE			8-20-97	
1+00	148.30	135.66	12.6				97-14510-7	2128 PARKRIDGE	11509 Lydia CR		8-20-97	226-97
2+00							97-17721-7	2144 PARKRIDGE			10-1-97	
	148.89	138.76	10.1	2+02.7		4" STUB NW 139.03	97-20237-7	2140 PARKRIDGE	11510 Lydia CR		11-7-97	2-1-97