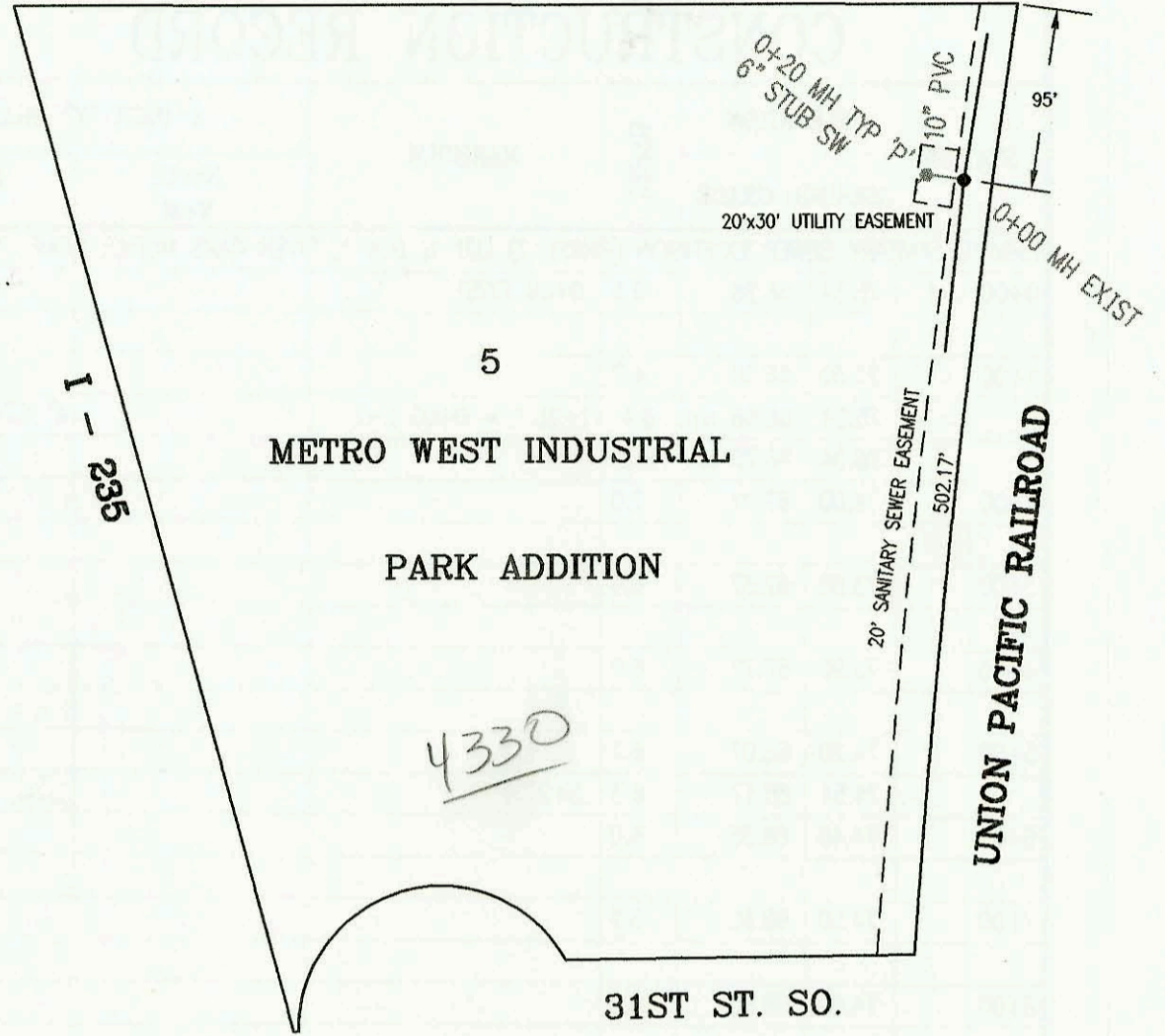


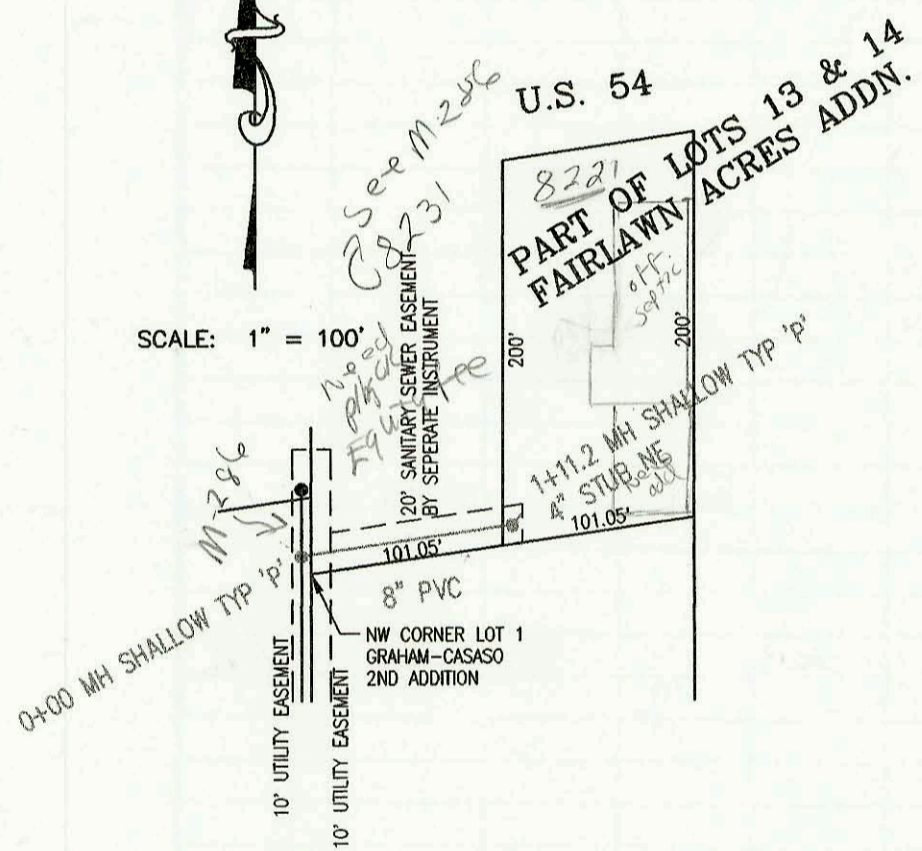
SCALE: 1" = 100'

SANITARY SEWER EXTENSION TO SERVE
 METRO WEST INDUSTRIAL PARK ADDITION
 PROJECT NO. 650PPS (607861)
 BUILT BY McCOLLOUGH EXCAVATING
 BOOKED 1/27/97 PER AS BUILT PLAN



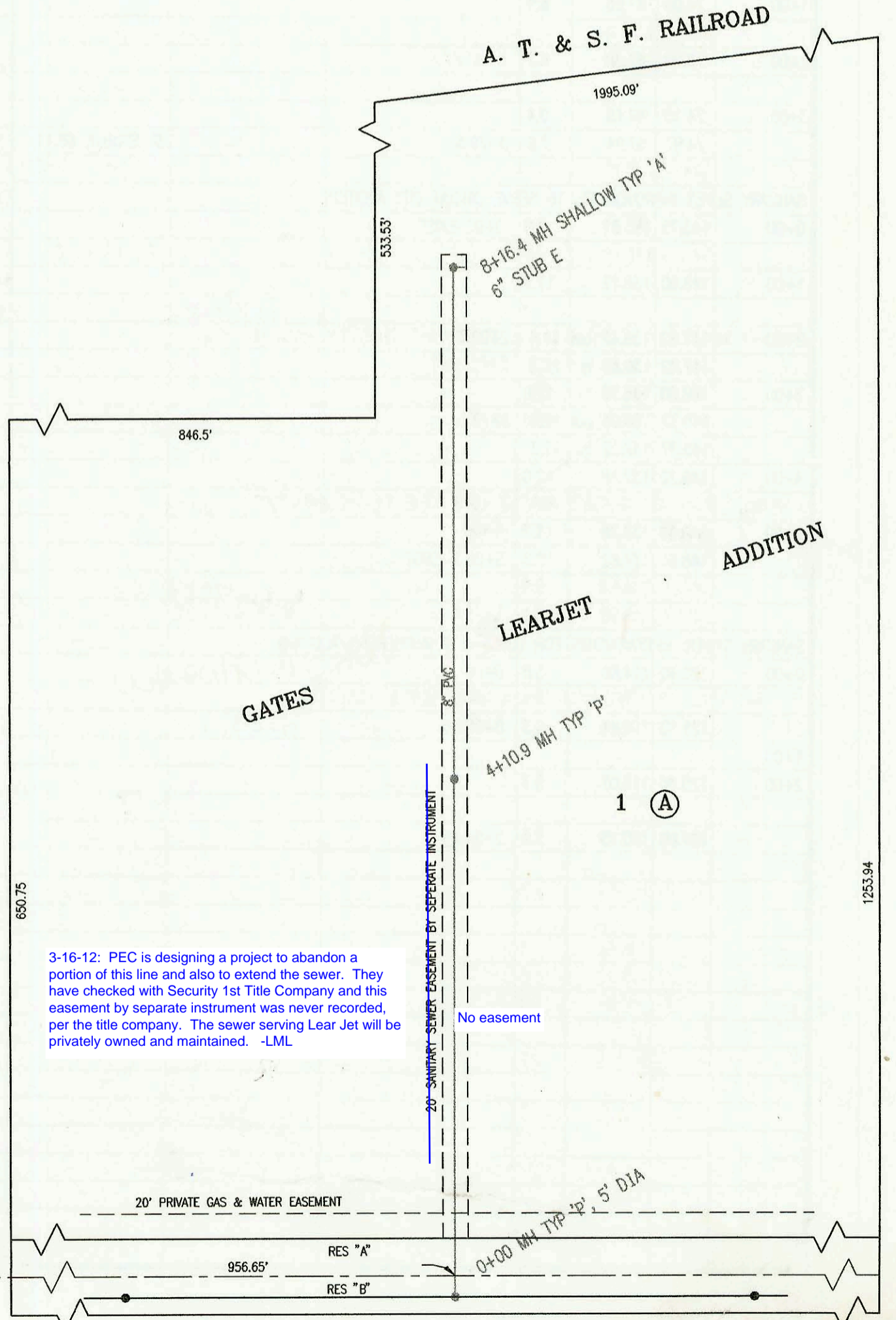
SANITARY SEWER EXTENSION TO SERVE
 PART OF LOTS 13 & 14, FAIRLAWN ACRES ADDN.
 PROJECT NO. 634PPS (607861)
 BUILT BY PADGETT EXCAVATION
 BOOKED 1/27/97 PER AS BUILT PLAN

SCALE: 1" = 100'



SCALE: 1" = 100'

SANITARY SEWER EXTENSION TO SERVE
 LOTS 1, BLK A, GATES LEARJET ADDN.
 PROJECT NO. 643PPS (607861)
 BUILT BY DONDLINGER CONSTRUCTION
 BOOKED 1/28/97 PER AS BUILT PLAN



3-16-12: PEC is designing a project to abandon a portion of this line and also to extend the sewer. They have checked with Security 1st Title Company and this easement by separate instrument was never recorded, per the title company. The sewer serving Lear Jet will be privately owned and maintained. -LML

No easement

CONSTRUCTION RECORD						SERVICE RECORD						
STATION	ELEVATION		DEPTH	MANHOLE	4-INCH "Y" BRANCHES		No. of Permit		House Number		DATE OF PERMITS	
	GROUND	GRADE			North West	South East	North West	South East	North West	South East	North West	South East
SANITARY SEWER TO SERVE PAWNEE MESA ADDITION (PASE 3) (CONT. FROM N-242)												
0+00 L-3	144.20	134.88	9.3	0+00 = 14+85.1								
1+00	143.50	135.22	8.3				97-17667		11391 Lotus		9-15-98	
2+00	143.90	135.57	8.3				98-37507	98-37527	11305 Lotus	11210 Grant	3-9-98	3-9-98
	144.06	135.75 out	8.3	2+54.0	4" STUB S 136.12			98-17667		11306 Grant		9-4-98
	144.06	135.85 in	8.2					98-37977	11309 Lotus		1-7-98	
3+00	144.20	136.00	8.2				98-5807	97-28727	11411 Lotus	11314 Grant	1-7-98	11-2-97
	144.53	136.17 out	8.4	3+52.4			97-21977	98-11457	11405 Lotus	11482 Grant	12-11-97	3-9-98
	144.53	136.27 in	8.3									
4+00	144.70	136.42	8.3			4" SCH 40 PVC 5+75.6	97-17441	98-37467	11409 Lotus	11406 Grant	10-1-97	3-9-98
5+00	145.20	136.73	8.5			4" SCH 40 PVC 6+98.0	97-17440	98-37447	11413 Lotus	11410 Grant	10-1-97	3-9-98
	145.84	137.02	8.8	5+94.2								
6+00	145.70	137.04	8.7									
7+00	146.20	137.31	8.9				97-14498	98-6867	11501 Lotus	11502 Grant	8-20-97	4-16-98
8+00	146.70	137.58	9.1				97-14496		11505 Lotus		8-20-97	
	147.01	137.62	9.4	8+14.0	4" STUB NW 137.98	4" STUB SW 137.98	98-14171					
0+00 L-4	143.00	135.56	7.4	0+00 = 17+19.3 L-1								
1+00	142.70	135.90	6.8				97-29017		11220 Lydia		2-26-97	
2+00	142.30	136.25	6.1									
	142.37	136.50	5.9	2+73.5	4" STUB N 136.74							
0+00 L-5	145.79	135.50	10.3	0+00 EXIST								
1+00	143.60	135.79	7.8									
2+00	143.60	136.08	7.5		1+88.0 4" SCH 40 PVC		97-29287		11226 Lydia		6-9-97	
						2+10.0 4" SCH 40 PVC	97-37687	97-29277	11222 Lydia	11219 Rita	3-17-97	6-9-97
							97-37697		11228 Lydia		3-17-97	
3+00	143.40	136.37	7.0									
	143.10	136.65	6.5	3+95.3	4" STUB E 136.92		97-29027		11224 Lydia		2-26-97	
SANITARY SEWER EXT. TO SERVE LOT 5, METRO WEST INDUSTRIAL PARK ADDITION												
0+00	102.20	90.42 out	11.8	0+00 EXIST								
	102.20	92.42 in	9.8									
	102.39	93.30	9.1	0+20.0		6" STUB SW 93.77		96154027		4330 W. Kellogg		9-18-96
SANITARY SEWER EXT. TO SERVE PART OF LOTS 13 & 14, FAIRLAWN ACRES												
0+00	141.90	134.27	7.6	0+00								
1+00	140.20	134.64	5.6									
	140.85	134.68	6.2	1+11.2	4" PVC SCH 40	4" STUB NE 134.90		97-14597		8221 W. Kellogg		2-24-97
SANITARY SEWER TO SERVE LOT 1, BLK A, GATES LEARJET ADDITION												
0+00	144.06	134.36	9.7	0+00								
1+00	143.60	134.65	9.0									
2+00	143.80	134.94	8.9									
3+00	143.70	135.23	8.5									
4+00	143.00	135.52	7.5									
	143.11	135.55	7.6	4+10.9								
5+00	142.40	135.81	6.6									
6+00	141.70	136.10	5.6									
7+00	141.20	136.40	4.8									
8+00	140.60	136.69	3.9									
	140.77	136.74	4.0	8+16.4		6" STUB E 136.91						