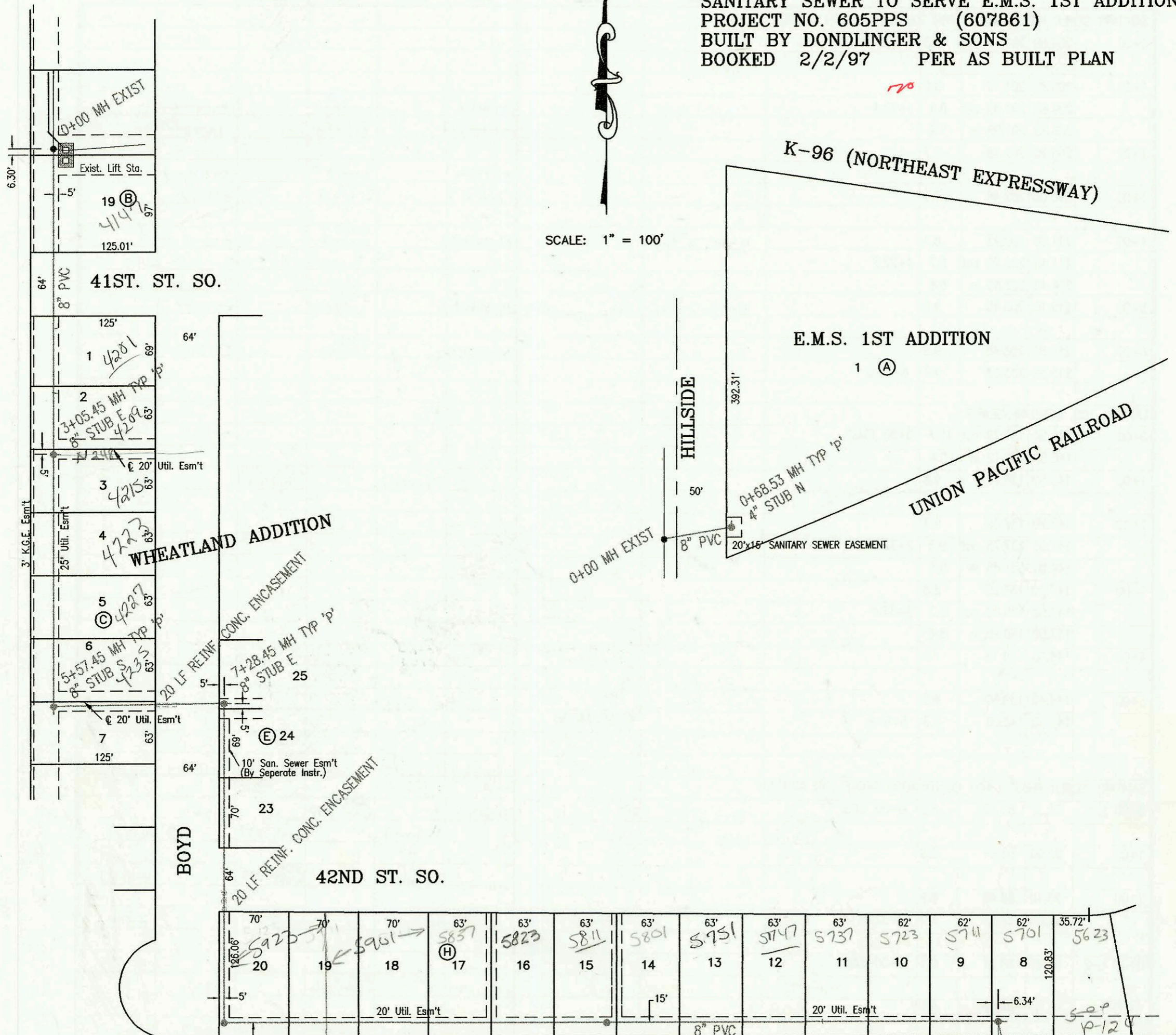


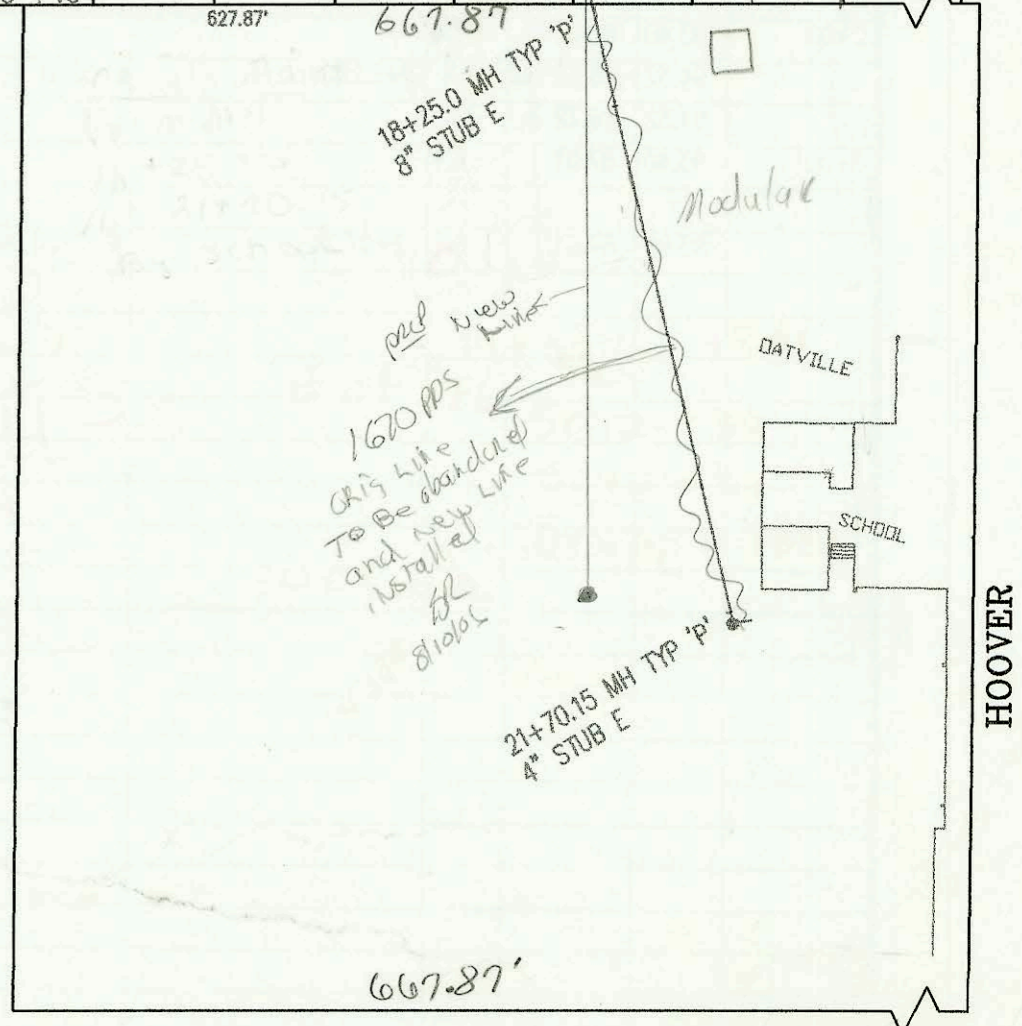
SANITARY SEWER TO SERVE E.M.S. 1ST ADDITION
 PROJECT NO. 605PPS (607861)
 BUILT BY DONDLINGER & SONS
 BOOKED 2/2/97 PER AS BUILT PLAN



SCALE: 1" = 100'

SANITARY SEWER TO SERVE PART OF
 WHEATLAND ADDITION AND OATVILLE SCHOOL
 PROJECT NO. 654PPS (607861)
 BUILT BY MIES CONSTRUCTION CO.
 BOOKED 2/2/97 PER AS BUILT PLAN

SCALE: 1" = 100'



HOOVER

CONSTRUCTION RECORD							SERVICE RECORD					
STATION	ELEVATION		DEPTH	MANHOLE	4-INCH "Y" BRANCHES		No. of Permit		House Number		DATE OF PERMITS	
	GROUND	GRADE			North West	South East	North West	South East	North West	South East	North West	South East
SANITARY SEWER TO SERVE E.M.S. 1ST ADDITION												
0+00	155.65	144.19	11.5	0+00 EXIST								
	155.65	144.62	11.0	0+68.53	4" STUB N 144.95							
SANITARY SEWER TO SERVE PART OF WHEATLAND ADDN. & OATVILLE SCHOOL												
0+00	121.04	107.78	13.3	0+00 EXIST								
					0+35 4" E 117.2		3354		4147 Boyd			8-9-96
1+00	121.20	108.08	13.1		1+78 4" E 117.3		3175		4201 Boyd			9-31-97
2+00	120.80	108.38	12.4		2+47 4" E 117.3		3183		4201 Boyd			8-12-97
3+00	121.50	108.68	12.8		3+15 4" E 117.7		3350		4215 Boyd			10-22-97
	121.90	108.70	13.2	3+05.45	8" STUB E 108.81							
4+00	121.00	108.99	12.0		4" SCH 40 4+05.45		99-00-599		4225 Boyd			9-8-99
5+00	121.00	109.29	11.7				99-01-214		4235 Boyd			11-7-99
	121.10	109.46 out	11.6	5+57.45	8" STUB S 109.56							
	121.10	109.56 in	11.5									
6+00	120.30	109.69	10.6									
7+00	119.10	109.99	9.1									
	121.80	110.08 out	11.7	7+28.45	8" STUB E 110.17							
	121.80	110.17 in	11.6									
8+00	119.60	110.39	9.2									
9+00	119.00	110.69	8.3									
10+00	118.60	110.99	7.6									
	119.10	111.13 out	8.0	10+47.51			99-65-27		5923 w/ 42nd			4-8-99
	119.10	111.23 in	7.9				2001-00264		5901 42nd			1-10-01
11+00	118.20	111.45	6.7									
12+00	118.80	111.88	6.9				2002-00762		5823 42nd			3-24-03
13+00	119.50	112.31	7.2						5821 w/ 42nd			1-14-03
14+00	120.10	112.74	7.4				2002-00496		581 w/ 42nd			2-24-03
	121.00	112.88	8.1	14+32.66			2002-01653		5801 42nd			6-14-02
15+00	122.00	113.66	8.3									
16+00	123.00	114.81	8.2				2002-02194		5751 42nd			10-14-02
17+00	125.80	115.96	9.8		4" SCH 40 DL TAP 16+54		2002-03330		5747 42nd			12-20-02
							2001-00550		5737 w/ 42nd			3-14-01
							2002-02572		5723 w/ 42nd so.			9-18-02
18+00	127.10	117.11	10.0									
	127.80	117.40 out	10.4	18+25.0								
	127.80	117.50 in	10.3		18+95 4" SDR 35		3085		4335 S Hoover Rd.			1-21-97
19+00	127.40	117.79	9.6									
20+00	126.30	118.18	8.1		4" sch 40 19+45		3384	3233	4335 Hoover (Medulla Bldg)			11-28-97
					20+50		99-116-7		4335 Hoover			9-14-99
21+00	127.20	118.58	8.6		21+64.15 6" SDR 35*		3086		4335 S Hoover Rd.			1-21-97
	127.00	118.85	8.2	21+70.15	4" STUB E 119.18							

* 1-21-97 - Oatville School (Main Bldg.) - second 4" SDR 35 Kickout installed. 4" & 6" kickouts wryed together.