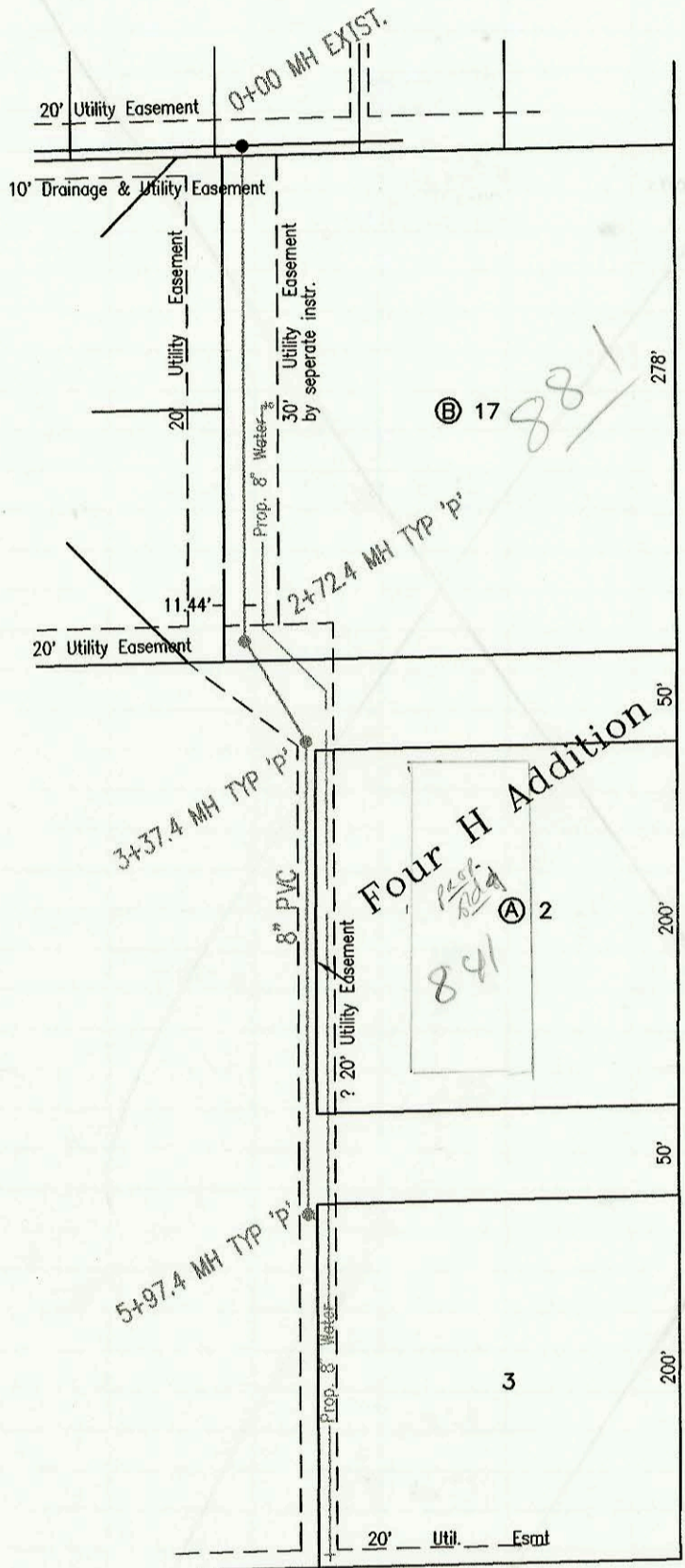


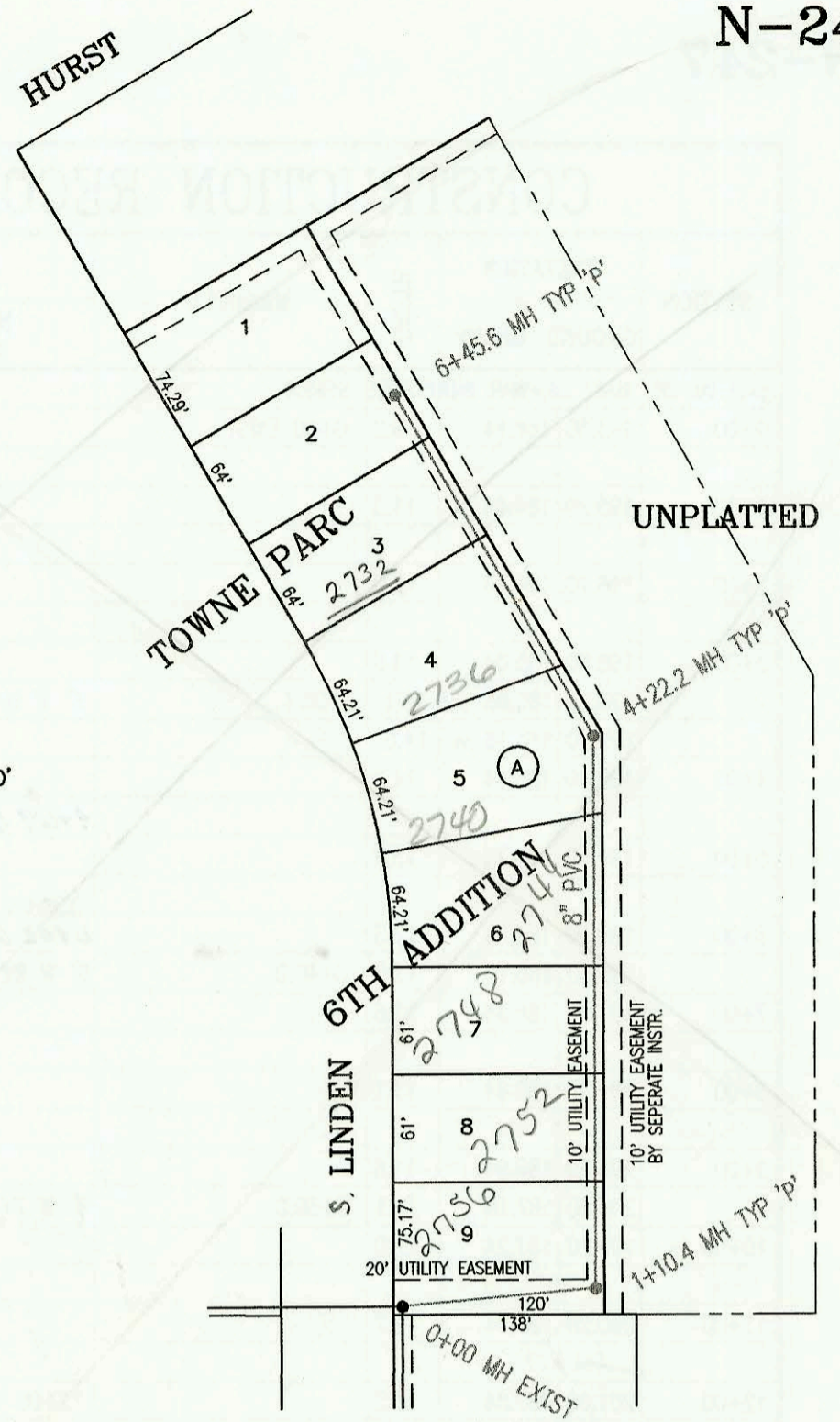
SANITARY SEWER IMPROVEMENTS TO SERVE
TOWNE PARC 6TH ADDITION
PROJECT NO. 608PPS (607861)
BUILT BY MIES CONSTRUCTION CO.
BOOKED 2/4/97 PER AS BUILT PLAN

LATERAL 105, WESTLINK SEWER
PROJECT NO. 468-82293 (742932)
BUILT BY NOWAK CONSTRUCTION CO.
BOOKED 2/10/97 PER PLAN

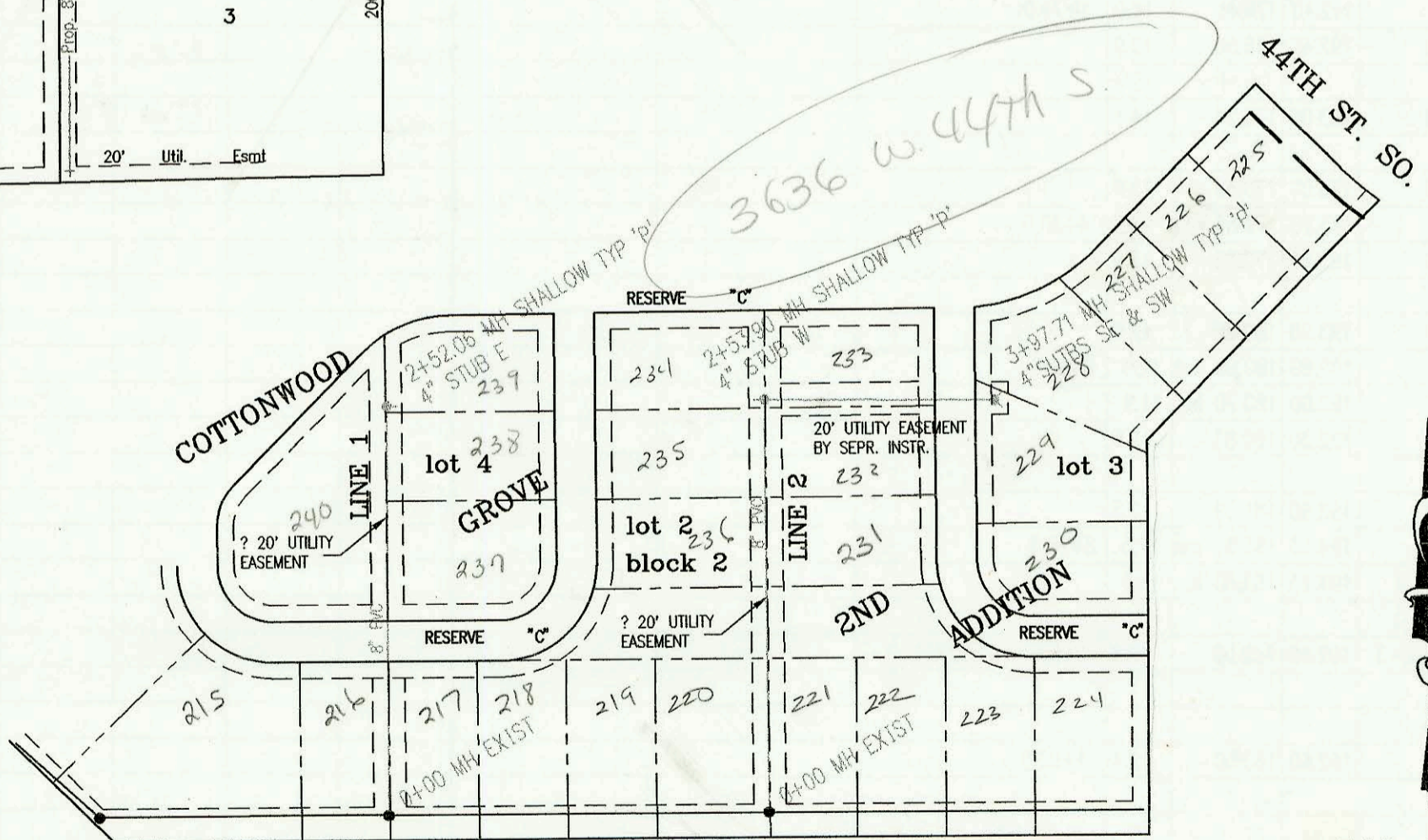


SCALE: 1" = 100'

SCALE: 1" = 100'



TYLER ROAD



SCALE: 1" = 100'

SANITARY SEWER PHASE I FOR
COTTONWOOD GROVE 2ND ADDITION
PROJECT NO. 635PPS (607861)
BUILT BY ALLEN'S EXCAVATING
BOOKED 4/14/97 PER AS BUILT PLAN

CONSTRUCTION RECORD						SERVICE RECORD						
STATION	ELEVATION		DEPTH	MANHOLE	4-INCH "Y" BRANCHES		No. of Permit		House Number		DATE OF PERMITS	
	GROUND	GRADE			North West	South East	North West	South East	North West	South East	North West	South East
SANITARY SEWER IMPROVEMENTS FOR TOWNE PARC 6TH ADDITON												
0+00	209.80	201.46	8.3	0+00 EXIST								
1+00	209.80	201.77	8.0									
	209.85	201.80	out 8.1	1+10.4			97-17119-7		2756 Linden		9-26-97	
	209.85	201.95	in 7.9				97-18527-7		2752 Linden		10-20-97	
2+00	209.90	202.19	7.7									
3+00	210.00	202.46	7.5				97-18526-7		2748 Linden		10/20/97	
							97-14057-7		2747 Linden		8-18-97	
4+00	211.00	202.73	8.3		4+01.2 4" sch		97-8461-7		2740 Linden		5-28-97	
	211.45	202.79	out 8.7	4+22.2								
	211.45	202.89	in 8.6									
5+00	212.10	203.15	9.0		5+36.2 4" sch		97-8460-7		2736 Linden		5-23-97	
6+00	212.80	203.48	9.3				97-3977-7		2732 Linden		3-17-97	
	213.35	203.63	9.7	6+45.6								
LATERAL 105, WESTLINK SEWER												
0+00	146.50	134.79	out 11.7	0+00 EXIST								
	146.50	136.12	in 10.4									
1+00	146.50	136.72	9.8				97-1789-7		2881 Tyler Rd		2-11-97	
2+00	147.20	137.32	9.9									
	147.50	137.75	out 9.8	2+72.4								
	147.50	137.85	in 9.6									
3+00	147.10	138.25	8.8									
	147.50	138.80	out 8.7	3+37.4								
	147.50	138.90	in 8.6									
4+00	146.80	139.16	7.6			4" SCH 40 4+38.8	2000- 0152-7		841 N TYLER RD		6/29/00	
5+00	146.40	139.59	6.8									
	147.30	140.00	7.3	5+97.4		4" SE 140.35						
SANITARY SEWER PHASE I FOR COTTONWOOD GROVE 2ND ADDITION												
0+00 L-1	93.32	84.40	8.9	0+00 EXIST			97-5927-7		3636 w 44th #240		4-17-97	
1+00	92.00	85.44	6.6				97-5928-7		3636 w 44th #237		4-17-97	
2+00	93.40	86.49	6.9				97-5929-7		3636 w 44th #238		4-17-97	
	94.05	87.03	7.0	2+52.06		4" STUB E 87.22	97-5930-7		3636 w 44th #239		4-17-97	
0+00 L-2	92.97	83.91	9.1	0+00 EXIST								
1+00	93.00	84.99	8.0				97-5927-7		3636 w 44th #236		4-17-97	
2+00	93.40	86.03	7.4				97-5926-7	97-5923-7	3636 w 44th #235	3636 w 44th #232	4-17-97	4-17-97
	94.32	86.57	out 7.8	2+53.90		4" STUB W 86.84	97-5925-7	97-5922-7	3636 w 44th #234	3636 w 44th #231	4-17-97	4-17-97
	94.32	86.72	in 7.6				97-5924-7		3636 w 44th #233		4-17-97	
3+00	93.40	87.01	6.4									
	93.69	87.63	6.1	3+97.71		4" STUB NE 87.90 4" STUB SE 87.94						