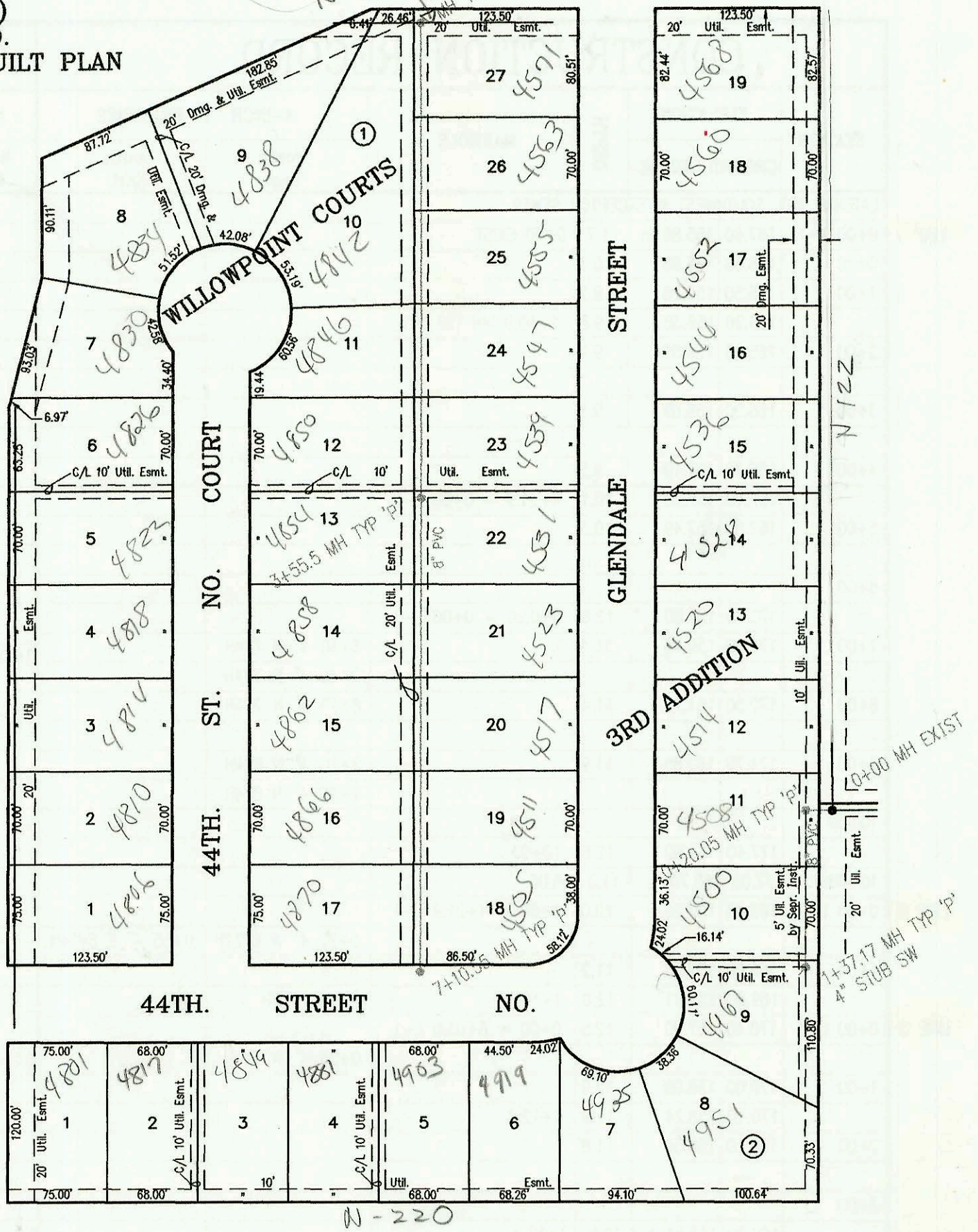


SANITARY SEWER TO SERVE  
 WILLOWPOINT COURTS 3RD ADDITION  
 PROJECT NO. 639PPS (607861)  
 BUILT BY MIES CONSTRUCTION CO.  
 BOOKED 4/10/97 PER AS BUILT PLAN

45TH. ST. NO. N-249A

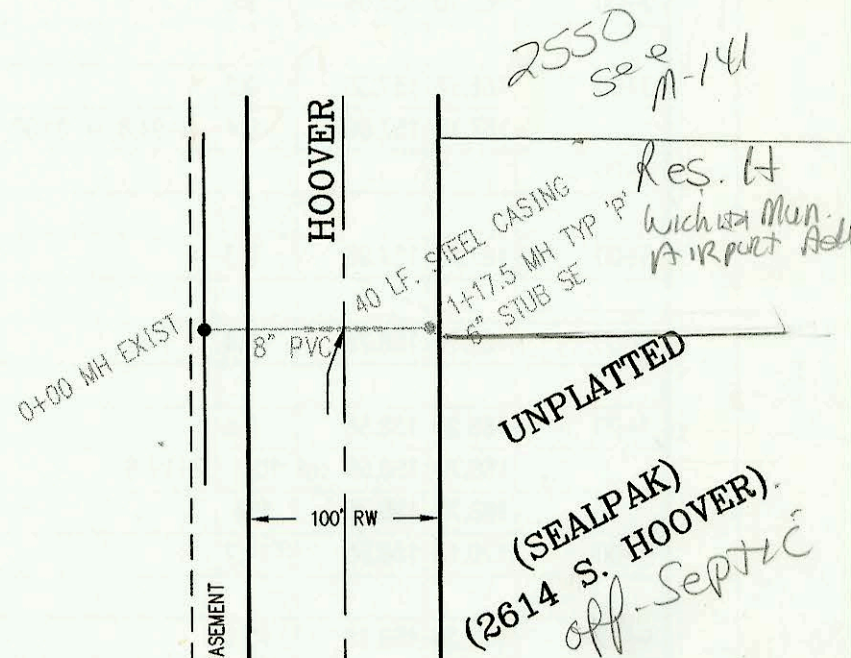
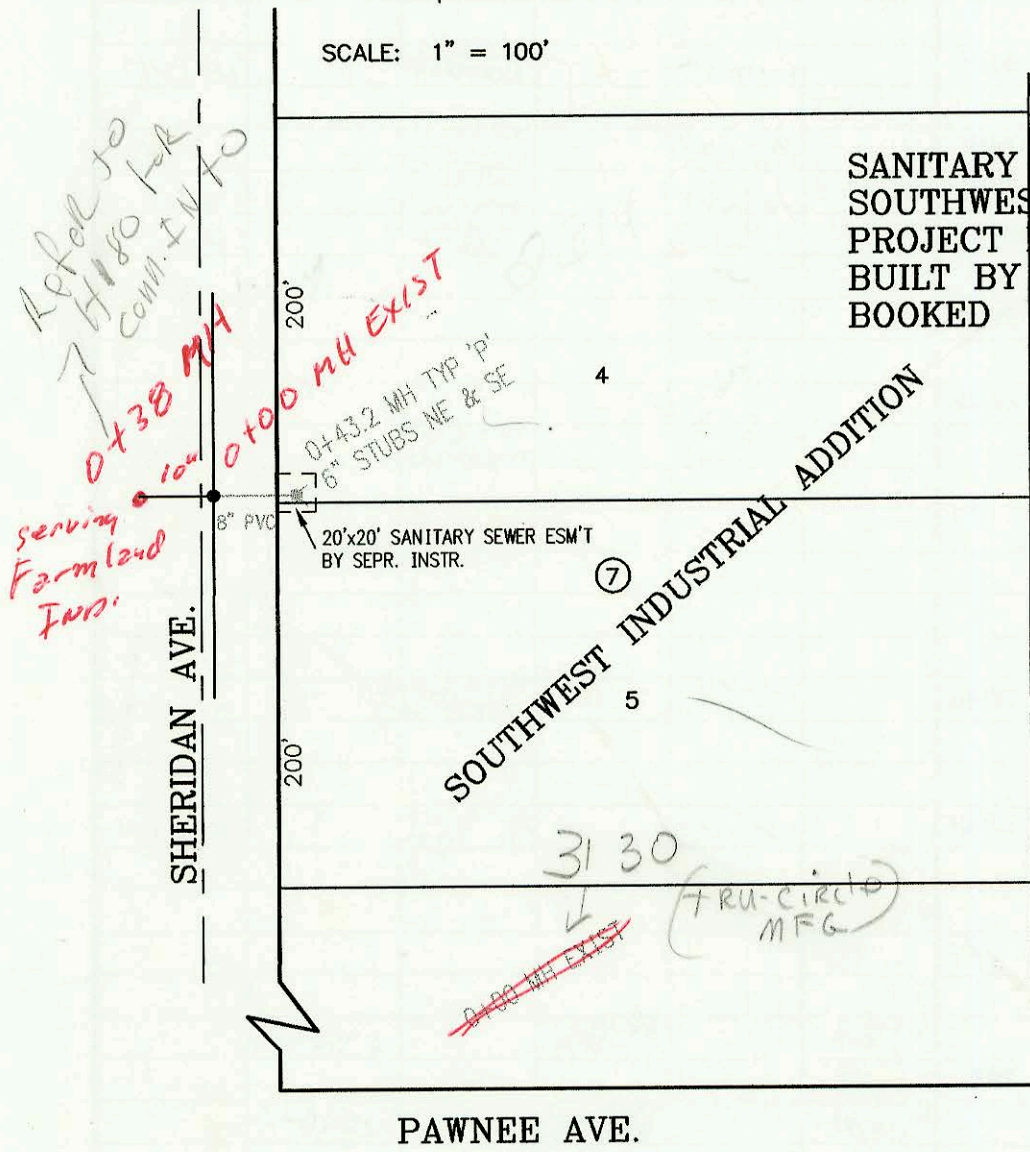
SCALE: 1" = 100'

OLIVER



SCALE: 1" = 100'

SANITARY SEWER TO SERVE LOTS 4 & 5, BLK. 7,  
 SOUTHWEST INDUSTRIAL ADDITION  
 PROJECT NO. 687PPS (607861)  
 BUILT BY McCULLOUGH EXCAVATION CO.  
 BOOKED 4/10/97 PER AS BUILT PLAN



SANITARY SEWER TO SERVE SEALPAK  
 PROJECT NO. 417PPS (607861)  
 BUILT BY W. B. CARTER CONSTRUCTION CO.  
 BOOKED 4/10/97 PER AS BUILT PLAN

CL. K-42

