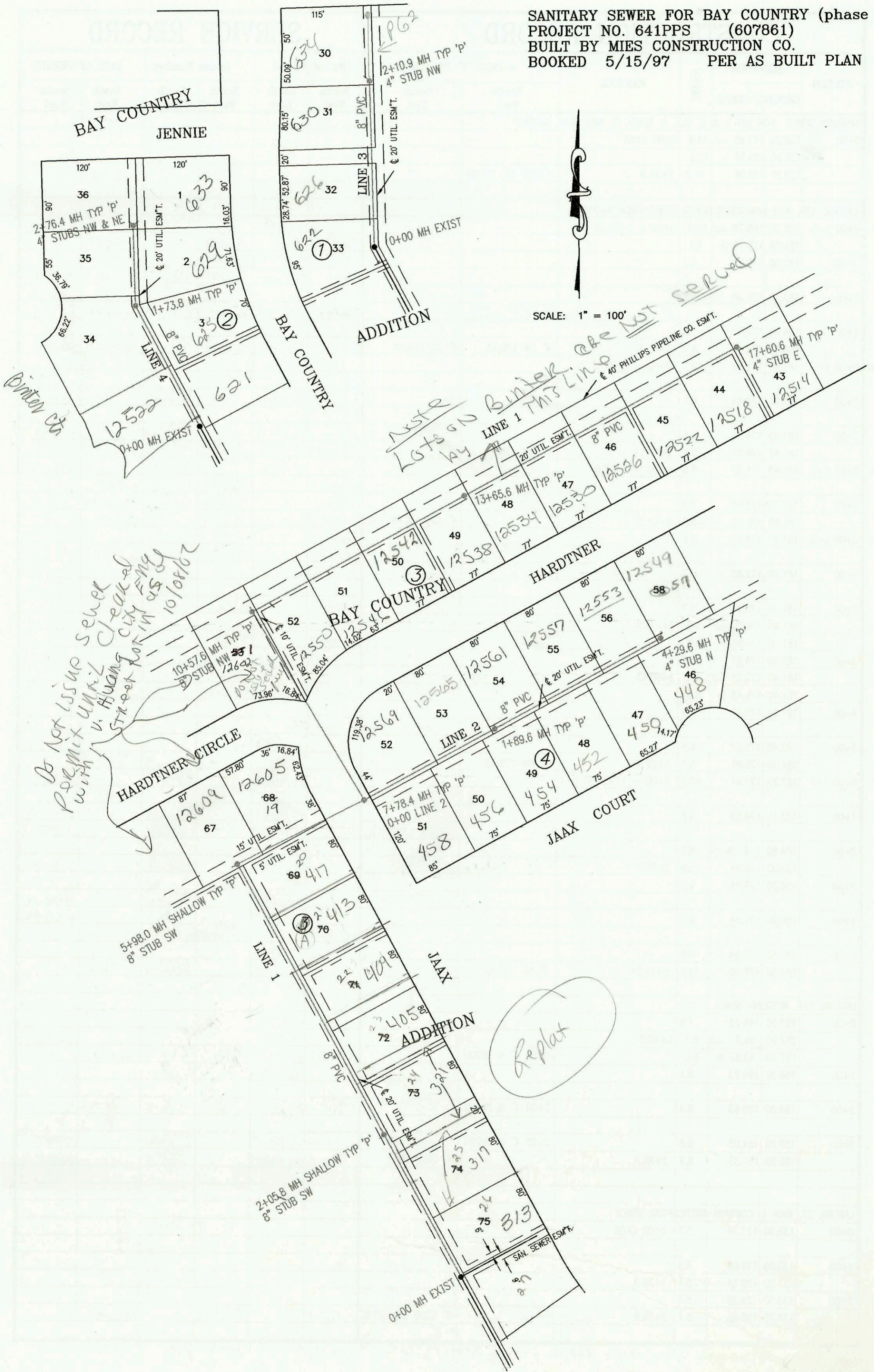


CENTRAL

SANITARY SEWER FOR BAY COUNTRY (phase 5)
PROJECT NO. 641PPS (607861)
BUILT BY MIES CONSTRUCTION CO.
BOOKED 5/15/97 PER AS BUILT PLAN



CONSTRUCTION RECORD					SERVICE RECORD							
STATION	ELEVATION		DEPTH	MANHOLE	4-INCH "Y" BRANCHES		No. of Permit		House Number		DATE OF PERMITS	
	GROUND	GRADE			North West	South East	North West	South East	North West	South East	North West	South East
SANITARY SEWER FOR BAY COUNTRY - PHASE 5												
LINE 1	0+00 L-1	141.10	132.47	8.6	0+00 EXIST			2003-00753		313 JAAX		3-24-03
	1+00	139.60	132.88	6.7								
	2+00	139.10	133.30	5.8		4" SCH 40 1+29.8 Saddle		2001-01915		317 N JAAX		7-31-01
		139.62	133.32	out 6.3	2+05.8	8" STUB SW 133.36						
		139.62	133.40	in 6.2		4" SCH 40 2+15.1		99-00807		321 JAAX		9-29-99
	3+00	139.00	133.77	5.2				2002-01895		409 JAAX		9-10-02
	4+00	139.00	134.16	4.8				98-14987		413 JAAX		7-27-98
	5+00	139.20	134.56	4.6								
		141.44	134.94	out 6.5	5+98.0	8" STUB SW 135.00						
		141.44	135.00	in 6.4				95-257-7	2002-02156	12604 Hardtner	411 N JAAX	12-31-97
	6+00							2001-02762		12605 Hardtner		10-31-01
	7+00	144.30	135.33	9.0								
		144.89	135.59	out 9.3	7+78.4 = 0+00 L-2							
		144.89	135.69	in 9.2								
	8+00	145.00	135.78	9.2								
	9+00	146.50	136.18	10.3								
	10+00	149.50	136.59	12.9				2003-02681		12602 Hardtner		10-16-03
		151.60	136.82	out 14.8	10+57.6	8" STUB NW 136.90						
		151.60	136.90	in 14.7								
	11+00	151.50	137.72	13.8		10+84 4" SE 147.3		2002-01491		12530 Hardtner		5-24-02
						11+67 4" SE 148.4		2000-01107		12546 Hardtner		5-30-00
	12+00	152.30	139.65	12.6				2002-03325		12542 Hardtner		12-16-02
	13+00	152.60	141.58	11.0				99-00971		12538 Hardtner		10-21-99
		153.20	142.85	out 10.3	13+65.6							
		153.20	142.95	in 10.3				2003-02067		12534 Hardtner		8-8-03
	14+00	153.00	143.21	9.8		4" SCH 40 14+90.6 Saddle		2001-01733		12530 W Hardtner		7-13-01
	15+00	153.40	143.96	9.4		4" SCH 40 15+80.6		2000-01523		12526 Hardtner		6-29-00
								99-10789		12522 Hardtner		5-26-99
	16+00	153.70	144.71	9.0				98-14915		12518 Hardtner		7-27-98
	17+00	154.10	145.46	8.6								
		154.95	145.92	9.0	17+60.6	4" STUB E 146.25		07-20977		12514 Hardtner		11-24-97
LINE 2	0+00 L-2	144.89	135.74	9.1	0+00 = 7+78.4 L-1	4" SCH 40 0+54.3		99-00803	99-20345	12509 Hardtner	458 N JAAX CT	9-29-99
								99-55547		456 JAAX CT		3-19-99
	1+00	145.50	137.35	8.1		4" SCH 40 1+50.6		2000-01094		12505 Hardtner		5-2-00
		146.94	138.79	out 8.2	1+89.6			99-78747		459 N JAAX CT		4-28-99
		146.94	138.89	in 8.1		4" SCH 40 2+19.6		2000-00698	2000-01094	12501 Hardtner	12505 HARDNER	3-14-00
	2+00	146.40	139.04	7.4				99-01038		12509 Hardtner		10-27-99
	3+00	147.30	140.46	6.8								
	4+00	148.30	141.88	6.4				99-15871		450 N JAAX CT		9-2-97
		149.10	141.95	7.2	4+29.6	4" STUB N 142.33		98-		12504 Hardtner		3-6-98
LINE 3	0+00 L-3	153.70	143.89	9.8	0+00 EXIST							
	1+00	153.50	144.35	9.1								
	2+00	153.50	144.81	8.7				2003-02015		630 N Bay Country		10-24-02
		153.72	144.86	8.9	2+10.9	4" STUB NW 145.23		2000-02293		634 B See Below Bay Country		10-19-00
LINE 4	0+00 L-4	155.50	146.00	9.5	0+00 EXIST			2000-01927				8-30-00
	1+00	154.00	146.37	7.6				2004-01782	99-22797	12522 Hardtner	625 N Bay Country	6/24/05 5-28-99
		154.68	146.64	out 8.0	1+73.8							
		154.68	146.74	in 7.9		4" SCH 40 2+40.8		2000-00557		629 N Bay Country		3-1-00
	2+00	153.90	146.84	7.1								
		154.24	147.14	7.1	2+76.4	4" STUB NW 147.44	4" STUB NE 147.44	2000-00642		630 Bay Country		8-10-00

Rep- 2000-02293-634 N Bay Country- 10/19/00 - Mies Const- 4" SCH 40- 17W CO, 2V22, 2 KICKOUTS, 1H45, 1-4" WYE
2 Kickouts tied together 12' from MH. New house P186 broke in house & had to run another kickout