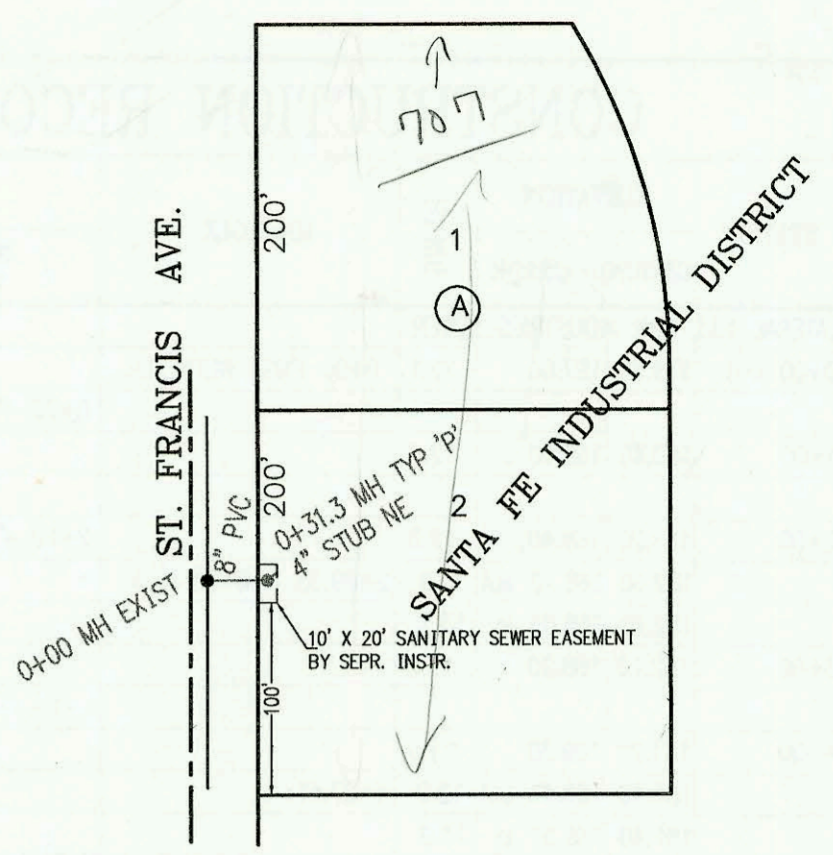


33rd ST. NO.



SCALE: 1" = 100'

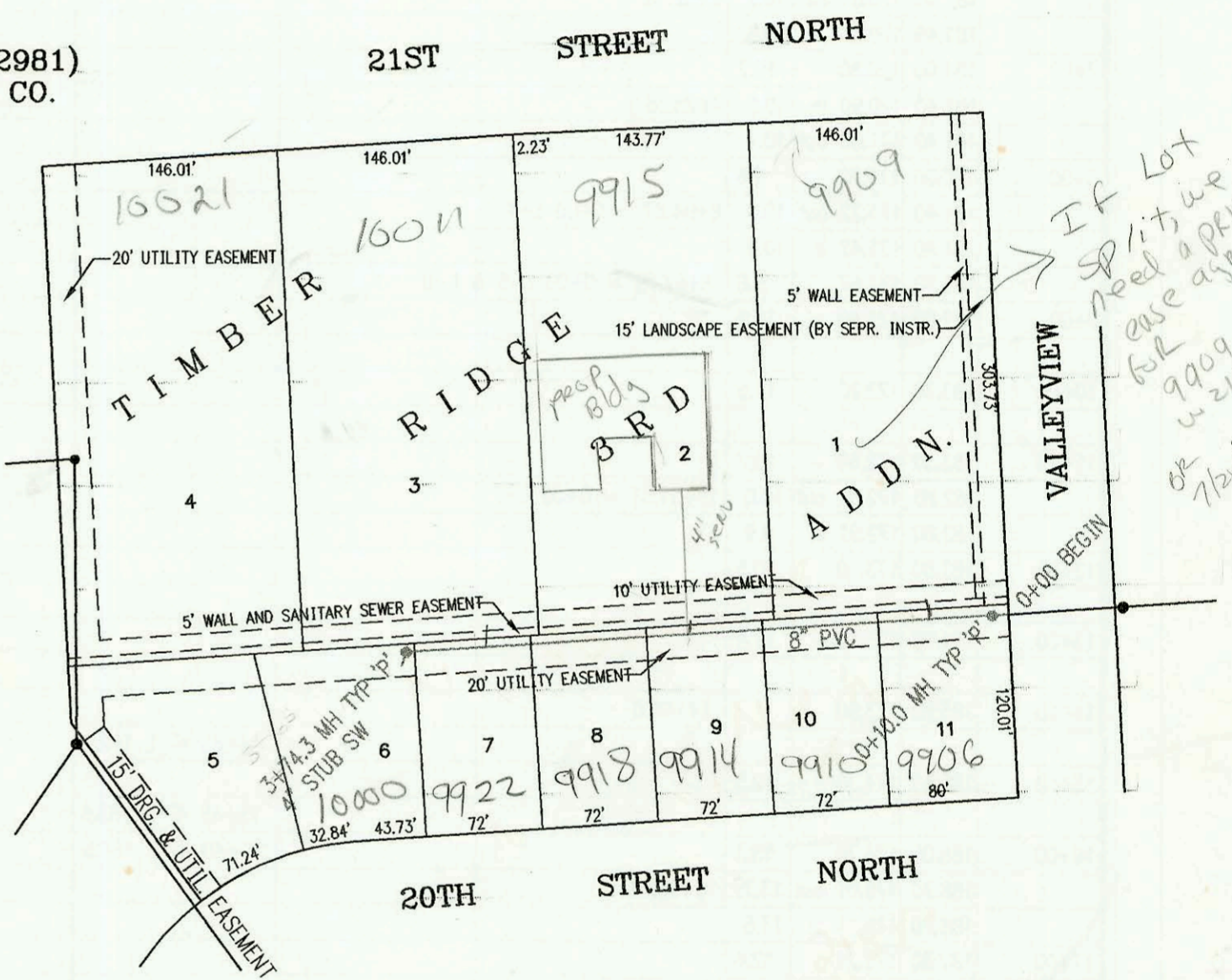
SANITARY SEWER FOR LOTS 1 & 2, BLK. A,  
SANTA FE INDUSTRIAL DISTRICT  
PROJECT NO. 694PPS (607861)  
BUILT BY McCULLOUGH EXCAVATION INC.  
BOOKED 5/22/97 PER AS BUILT PLAN



LATERAL 124, WESTLINK SEWER  
PROJECT NO. 468-82594 (742981)  
BUILT BY NOWAK CONSTRUCTION CO.  
BOOKED 6/6/97 PER PLAN



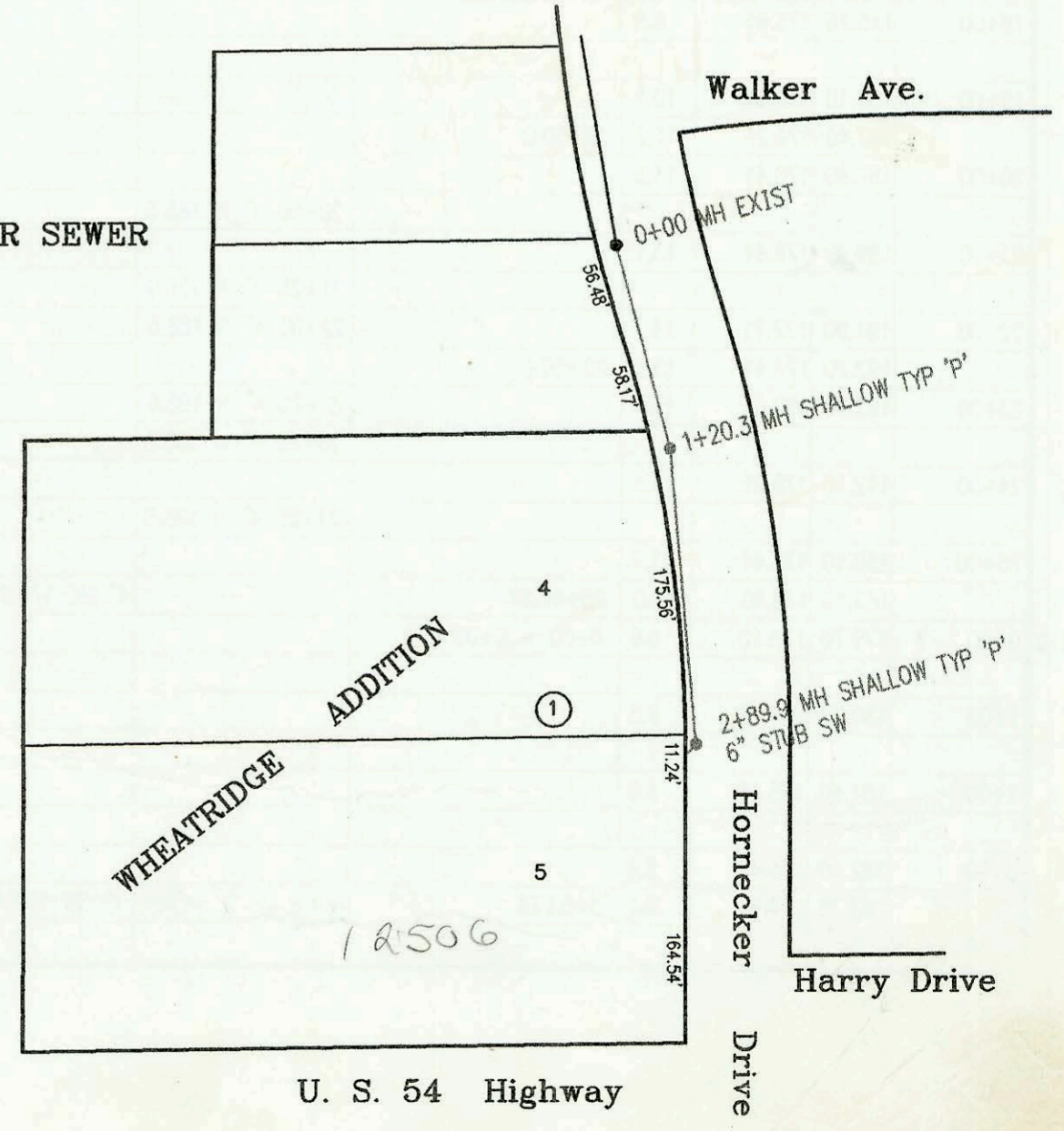
SCALE: 1" = 100'



LATERAL 27, MAIN 1, COWSKIN INTERCEPTOR SEWER  
PROJECT NO. 468-82669 (743039)  
BUILT BY DITCH DIGGERS LLC  
BOOKED 6/25/97/97 PER PLAN



SCALE: 1" = 100'





CONSTRUCTION RECORD						SERVICE RECORD						
STATION	ELEVATION		DEPTH	MANHOLE	4-INCH "Y" BRANCHES		No. of Permit		House Number		DATE OF PERMITS	
	GROUND	GRADE			North West	South East	North West	South East	North West	South East	North West	South East
SANITARY SEWER FOR LOT 1 & 2, BLK. A, SANTA FE INDUSTRIAL DISTRICT												
0+00	132.20	117.63 out	14.6	0+00 EXIST								
	132.20	119.57 in	12.6									
	132.31	120.56	11.8	0+31.3	4" STUB NE 121.86		97-8635-7		907 E 33rd		6-12-97	
LATERAL 133, WAR INDUSTRIES SEWER (CONT. FROM N-255)												
LINE 3 0+00 L-3	181.20	168.76 out	12.4	0+00 = 2+89.33 L-1				1999-0827-2	321 clay		7-28-99	
	181.20	175.10 in	6.1				2003-0305-0		326 crest		11-20-03	
1+00	182.30	175.95	6.3				2000-0660-7		326 crest		3-15-00	
							1999-00	2001-0235-4	317 crest	317 clay	8-26-99	9-20-01
2+00	183.30	176.80	6.5		4" SCH 40 PVC 2+58.3 saddle		2001-0069-7	1999-0514	314 crest	315 clay	3-30-01	8-26-99
3+00	184.90	177.65	7.3				2001-0199-7	2002-0128-1	310 crest	309 clay	8-14-01	5-6-02
LINE 4 0+00 L-4	181.40	171.32	10.1	0+00 = 8+04.67 L-1	4" SW 178.43	4" SE 178.43						
1+00	181.00	172.93	8.1					98-1226-7		321 N crest		9-23-98
2+00	181.00	174.54	6.5					99-1114-7		313 crest		1-22-99
	181.40	175.57	5.8	2+64.16	4" NW 176.32	4" SE	97-1743-7	2001-0188-1	1132 F 2nd	309 crest	10-1-97	7-10-04
LINE 5 0+00 L-5	181.40	171.77	9.6	0+00 = 8+67.69 L-1				97-4486-7		317 crest		3-16-99
1+00	181.10	173.83	7.3		4" SCH 40 1+27.77		97-10318-7	2000-0836	318 N Dowell		6-8-97	
	181.40	175.10	6.3	1+61.77		4" SW 176.43	97-1114-7		314 N Dowell		8-30-00	
LINE 6 0+00 L-6	181.40	171.77	9.6						310 N Dowell		1-22-99	
1+00	181.10	172.85	8.3				99-1349-7		322 Dowell		6-22-99	
2+00	181.10	173.94	7.2				97-1115-7		402 N Dowell		1-22-99	
	181.40	174.78 out	6.6	2+77.78					406 Dowell		7-14-98	
	181.40	174.88 in	6.5				98-1265-7					
3+00	181.10	174.97	6.1									
	181.40	175.33 out	6.1	3+90.43								
	181.40	175.43 in	6.0				98-444-7		410 N Dowell			
4+00	181.10	175.47	5.6									
5+00	182.40	175.87	6.5									
	184.30	175.99	8.3	5+29.35	4" NW 176.32							
LINE 7 0+00 L-7	183.20	172.91	10.3	0+00 = 11+51.51 L-1				97-1450-7		307 N Dowell		8-12-97
1+00	183.10	174.52	8.6					97-1450-2		331 N Dowell		8-12-97
							1+97.0 4" sch 40	97-10320-7		403 N Dowell		6-18-97
2+00	184.60	176.13	8.5									
	185.80	176.94	8.9	2+50.0			4" sch 40 2+65.0	97-10317-7		407 Dowell		6-18-97
3+00	186.20	177.14	9.1									
							4" sch 40 3+87	2001-0069-6		411 Dowell		3-30-01
4+00	186.90	177.54	9.4					99-7594-7		415 Dowell		4-26-99
								99-3859-7		1123 Central		2-12-99
5+00	187.80	177.94	9.9									
	188.30	178.00	10.3	5+15.34	4" NE 178.33			97		1133 Central		BR
LATERAL 124, WESTLINK SEWER												
0+00	157.50	149.73	7.8									
	157.90	149.77 out	8.1	0+10.0				98-1124-7		9906th		6-25-98
	157.90	149.87 in	8.0		0+50 4" N 5V20H		99-9057-7	98-8711-7	9909 W 21st	9910 W 20th	5-12-99	5-28-98
1+00	158.30	150.23	8.1					98-5782-7		9914 W 20th		4-14-98
2+00	159.00	150.63	8.4		4" SCH 40 2+00 4" N 3V20H	4" SCH 40 2+35.3	2000-0617-6	99-9395-7	9915 W 21st	9918 W 20th	9-5-00	6-9-97
3+00	159.80	151.03	8.8		3+25 4" N 1V20H	3+16.2 4" sch 40		97-11946-7		9922 W 20th		7-15-97
	160.60	151.33	9.3	3+74.3	4" STUB SW			97-11947-7		10000 W 20th		7-15-97
LATERAL 27, MAIN 1, COWSKIN INTERCEPTOR SEWER												
0+00	133.50	127.78	5.7	0+00 EXIST								
1+00	133.00	128.08	4.9									
	133.50	128.14	5.4	1+20.3								
2+00	133.50	128.38	5.1									
	133.75	128.65	5.1	2+89.9	4" PRECIP 6" STUB SW	6" STUB SW 128.82	97-1753-7		12506 W Kelliss		10-2-97	

11223 = Central. Quick TRIP - Fee in lieu of main lateral in amt of \$16,973.46 paid 3/5/99