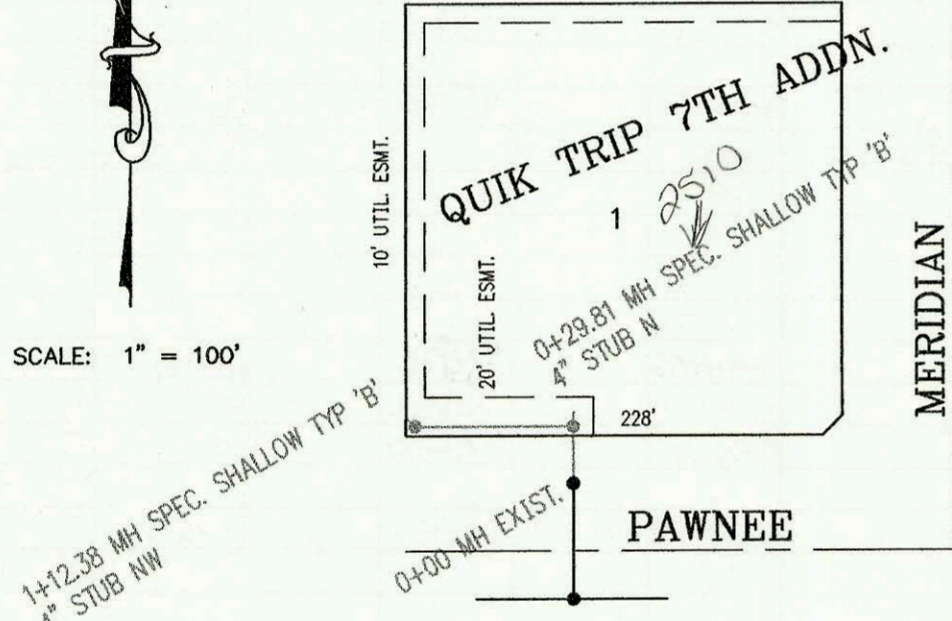
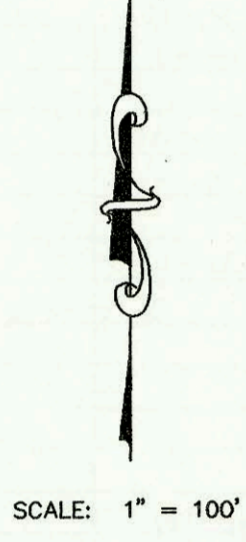
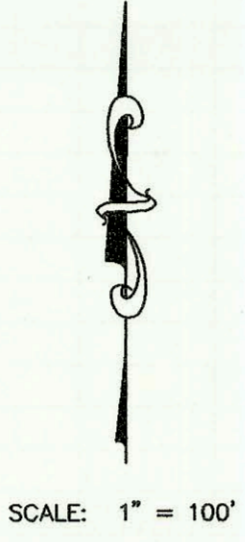
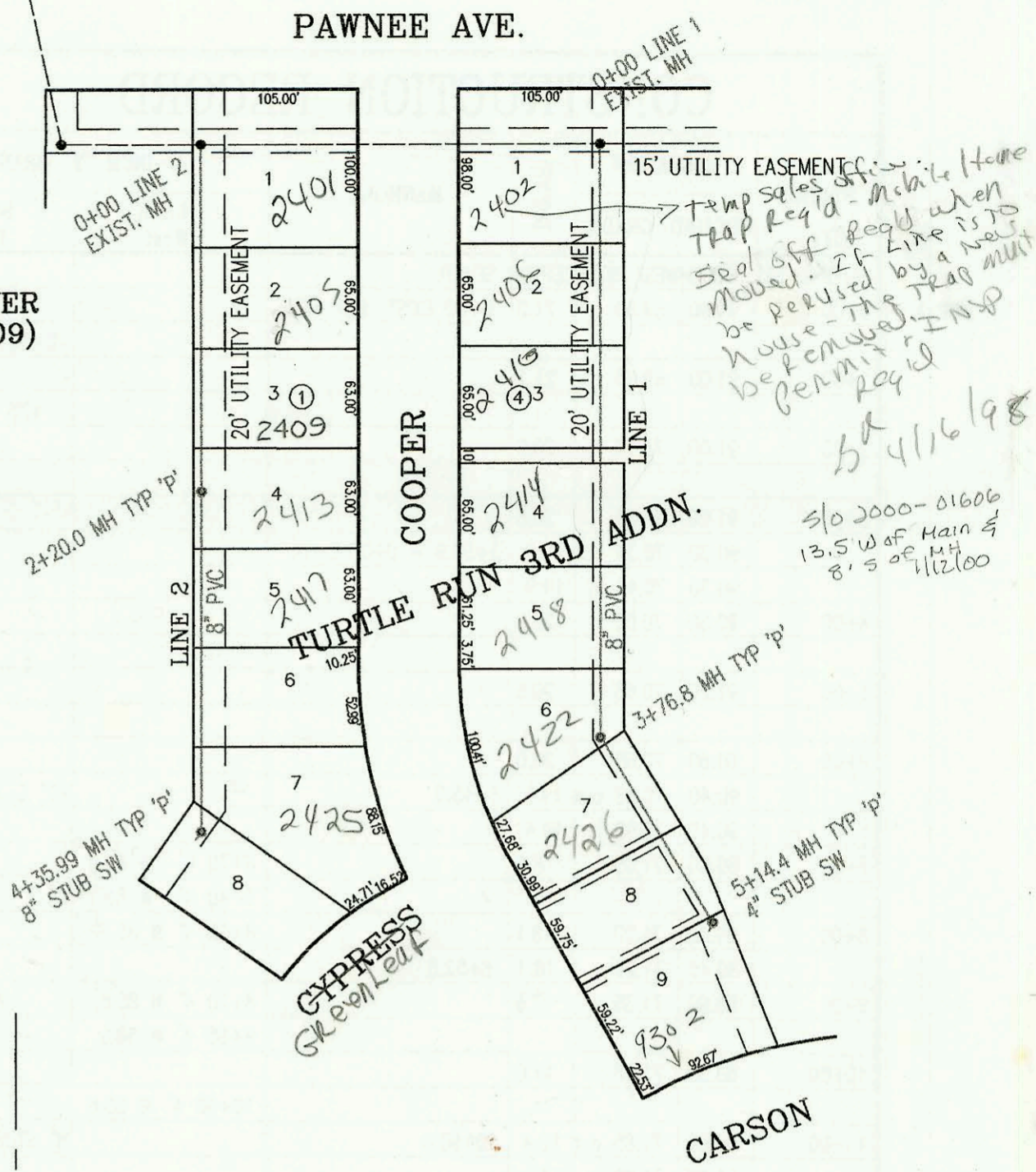
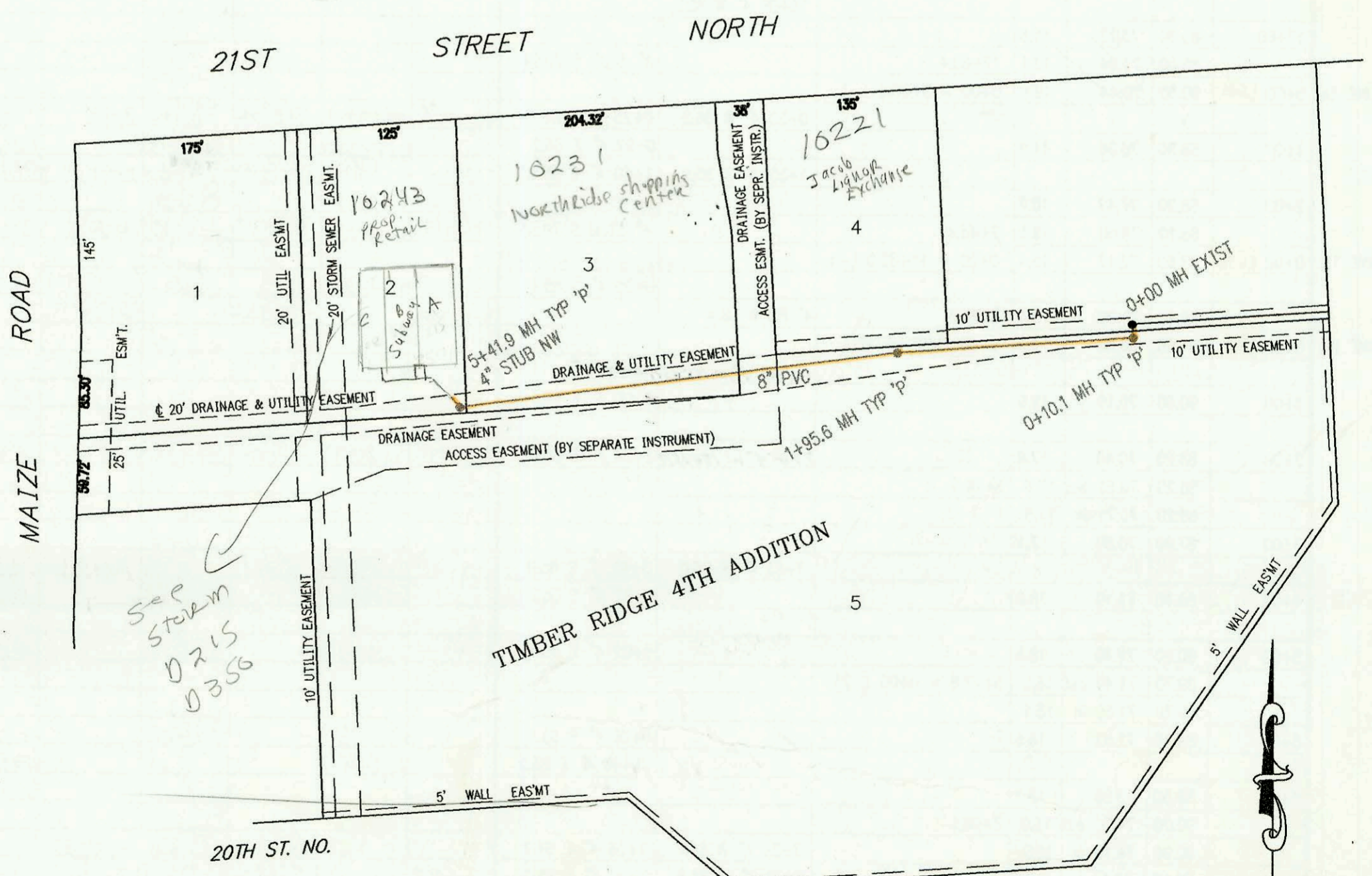


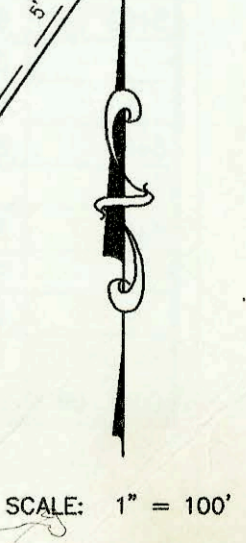
LATERAL 131, WAR INDUSTRIES SEWER
 PROJECT NO. 468-82588 (742809)
 BUILT BY MEIS CONSTRUCTION CO.
 BOOKED 6/12/97 PER PLAN



SANITARY SEWER FOR QUIK TRIP 7TH ADDITION
 PROJECT NO. 624PPS (607861)
 BUILT BY DONDLINGER AND SONS CONSTRUCTION CO.
 BOOKED 6/17/97 PER AS BUILT PLAN



SANITARY SEWER FOR TIMBER RIDGE 4TH ADDITION
 PROJECT NO. 709PPS (607861)
 BUILT BY NOWAK CONSTRUCTION CO.
 BOOKED 6/17/97 PER AS BUILT PLAN



| CONSTRUCTION RECORD | | | | | | SERVICE RECORD | | | | | | |
|---|-----------|--------|------------|---------|---------------------|-------------------------|---------------|------------------|----------------|--------------|-----------------|------------|
| STATION | ELEVATION | | DEPTH | MANHOLE | 4-INCH "Y" BRANCHES | | No. of Permit | | House Number | | DATE OF PERMITS | |
| | GROUND | GRADE | | | North West | South East | North West | South East | North West | South East | North West | South East |
| LATERAL 371, SWI (CONT. FROM N-259) | | | | | | | | | | | | |
| LINE 2 | | | | | 8+37 4" W 85.1 | 8+60 4" E 84.7 | 98-10937 | 97-16357 | 4910 mt carmel | 4909 cluster | 6-17-98 | 9-17-97 |
| | 9+00 | 87.70 | 74.86 | 12.8 | 9+02 4" W 84.8 | | 98-13170-7 | 97-16357 | 4911 mt carmel | | 7-8-98 | |
| | | | | | 9+67 4" W 84.5 | 9+34 4" E 85.0 | | 97-1707-7 | 4913 cluster | | | 6-3-99 |
| | 10+00 | 86.90 | 75.26 | 11.6 | 10+32 4" W 84.4 | | 98-10937 | 4922 mt carmel | | | 6-17-98 | |
| | | 86.60 | 75.55 out | 11.0 | 10+71.3 | 8" STUB S 75.65 | | | 4917 cluster | | 4-1-99 | |
| | | 86.60 | 75.65 in | 10.9 | | | 97-16357 | 2000-01321 | 4922 cluster | 5002 cluster | | 5-31-00 |
| | 11+00 | 86.40 | 76.58 | 9.8 | | 4" stub NE 87.2 | 99-01050 | 4922 cluster | | | 10-30-99 | |
| | | 87.20 | 80.00 | 7.2 | 11+95.9 | | | | | | | |
| LINE 2A | 0+00 L-2A | 89.70 | 71.59 | 18.1 | 0+00 = 5+27.8 L-2 | | | | | | | |
| | | | | | 0+85 4" W 85.3 | | 98-2075-7 | 4831 mt carmel | | | 2-9-98 | |
| | 1+00 | 89.60 | 71.89 | 17.7 | 1+45 4" W 85.0 | | 97-18463-7 | 4905 mt carmel | | | 10-9-97 | |
| | | 90.20 | 72.12 out | 18.1 | 1+75.3 | | | | | | | |
| | | 90.20 | 72.22 in | 18.0 | | | | | | | | |
| | 2+00 | 90.00 | 72.29 | 17.7 | 2+03 4" W 85.3 | | | | 4911 mt carmel | | 9-17-97 | |
| | | | | | 2+65 4" W 85.0 | | 97-16353-7 | 4915 mt carmel | | | 9-17-97 | |
| | 3+00 | 89.60 | 72.59 | 17.0 | 3+27 4" W 84.7 | | 98-13212-7 | 4914 mt carmel | | | 7-8-98 | |
| | | | | | 3+88 4" W 84.9 | | | | | | | |
| | 4+00 | 89.40 | 72.89 | 16.5 | | | | | | | | |
| | | | | | 4+54 4" W 84.5 | | 98-13209-7 | 4923 mt carmel | | | 7-8-98 | |
| | 5+00 | 89.10 | 73.19 | 15.9 | 5+14 4" W 84.2 | | 97-18461-7 | 4907 mt carmel | | | 10-9-97 | |
| | | 89.20 | 73.40 | 15.8 | 5+69.8 | 8" STUB S 73.5 | | | | | | |
| LATERAL 131, WAR INDUSTRIES SEWER | | | | | | | | | | | | |
| LINE 1 | 0+00 L-1 | 192.20 | 181.48 | 10.7 | 0+00 EXIST | 0+08 8" SW | 2000-01166b | 2402 Cooper | 2402 Cooper | 2402 Cooper | 7-20-00 | 7-12-00 |
| | 1+00 | 192.10 | 182.68 | 9.4 | | | 98-6825-7 | 2406 Cooper | 2410 Cooper | | 4-20-98 | 4-16-97 |
| | 2+00 | 192.60 | 183.88 | 8.7 | | | 98-593-7 | 2415 Cooper | | | 1-8-98 | |
| | 3+00 | 193.10 | 185.08 | 8.0 | | | 98-595-7 | 2415 Cooper | | | 1-9-98 | |
| | | 193.90 | 186.00 | 7.9 | 3+76.8 | | 98-6826-7 | 2415 Cooper | | | 4-20-98 | |
| | | 193.90 | 186.10 | 7.8 | | | 99-8980-7 | 2422 Cooper | | | 5-10-99 | |
| | 4+00 | 193.60 | 186.34 | 7.3 | | | 98-8842-7 | 2426 Cooper | | | 5-15-98 | |
| | 5+00 | 195.00 | 187.36 | 7.6 | | | | | | | | |
| | | 195.20 | 187.50 | 7.7 | 5+14.4 | 4" SW 187.83 | 97-9536-7 | 9302 Carson | | | 6-12-97 | |
| LINE 2 | 0+00 L-2 | 189.10 | 179.50 | 9.6 | 0+00 EXIST | | 2000-00135 | 2401 Cooper | | | 1-15-2000 | |
| | | | | | | 4" SCH 40 0+99 | 99-01313 | 2403 Cooper | | | 11-23-99 | |
| | 1+00 | 189.30 | 179.90 | 9.4 | | | | | | | | |
| | 2+00 | 190.00 | 180.30 | 9.7 | | | 98-6573-7 | 2409 Cooper | | | 4-20-98 | |
| | | 190.57 | 180.38 | 10.2 | 2+20.0 | | 98-14849-7 | 2413 Cooper | | | 8-12-98 | |
| | 3+00 | 190.70 | 180.70 | 10.0 | | | 99-34407 | 2417 Cooper | | | 2-24-99 | |
| | | | | | | | 98-8344-7 | 2405 Cooper | | | 5-15-98 | |
| | 4+00 | 191.70 | 181.10 | 10.6 | | | | | | | | |
| | | 192.60 | 181.24 | 11.4 | 4+35.99 | 8" SW 181.34 | | | | | | |
| Sanitary Sewer Ext. for Quik Trip 7th Addition | | | | | | | | | | | | |
| | 0+00 | 101.60 | 98.54 | 3.1 | 0+00 exist | | | | | | | |
| | | 102.00 | 98.57 out | 3.4 | 0+29.81 | 4" stub N 98.72 | | | | | | |
| | | 102.00 | 98.74 in | 3.3 | | | | | | | | |
| | 1+00 | 102.85 | 98.97 | 3.9 | 1+12.57 | 4" stub NW 99.05 | 2000-01404 | 2510 R-See Below | | | 6-13-00 | 10-9-97 |
| | | | | | | 4" SCH 40 1+10.33 | 97-17683-7 | | | | | |
| Sanitary Sewer Ext. for Timber Ridge 4th Addition | | | | | | | | | | | | |
| | 0+00 | 162.10 | 154.38 | 7.7 | 0+00 EXIST | | | | | | | |
| | | 161.80 | 154.55 out | 7.3 | 0+10.1 | | | | | | | |
| | | 161.80 | 154.79 in | 7.0 | | | | | | | | |
| | 1+00 | 161.50 | 155.26 | 6.2 | | | 97-15312-7 | 10281 w 21st | | | 9-8-97 | 6-19-97 |
| | | 161.35 | 155.60 | 5.8 | 1+95.6 | 4" SCH 40 1+73.6 7" RSP | 97-9948-7 | | | | | |
| | 2+00 | | | | | | | | | | | |
| | 3+00 | 161.00 | 156.07 | 4.9 | | | 97-9775-7 | 10281 w 21st | | | 6-17-97 | |
| | | | | | | 4" SCH 40 3+69.9 | | | | | | |
| | 4+00 | 161.00 | 156.48 | 4.5 | | | | | | | | |
| | 5+00 | 161.10 | 156.88 | 4.2 | | | 2001-01867 | 10243 w 21st | | | 7-30-01 | |
| | | 161.48 | 156.93 | 4.6 | 5+41.9 | 4" stub NW 157.07 | | | | | | |

Rep-2000-01404-2510 w Pawnee-6113100- ReddiRootr - Repl 3' section of SWR 31'w of bldg