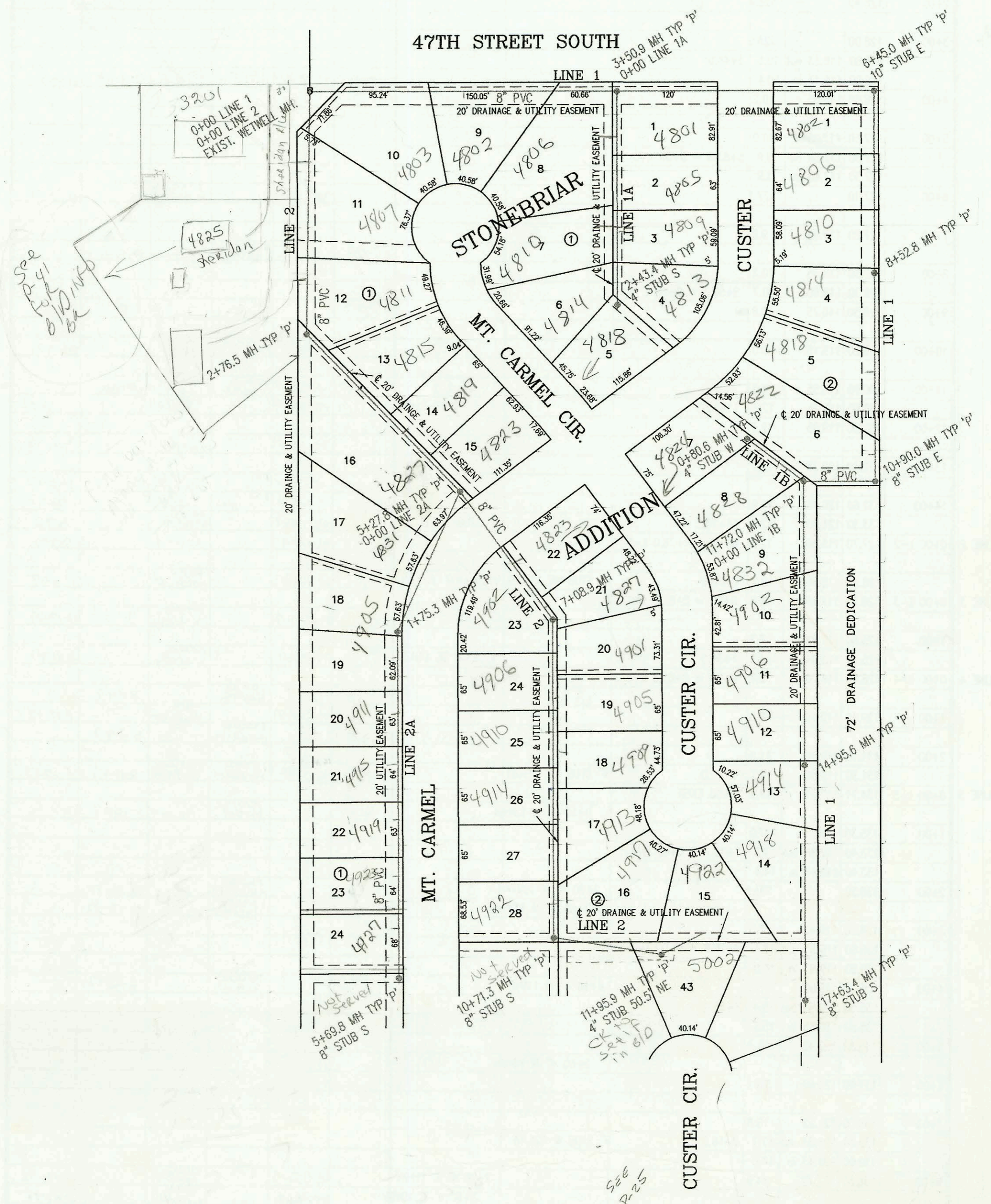


LATERAL 371, SOUTHWEST INTERCEPTOR SEWER
PROJECT NO. 468-82639 (742882)
BUILT BY NOWAK CONSTRUCTION CO.
BOOKED 6/9/97 PER PLAN

See N262 for
Benefit Dist. and
Force Main

SCALE: 1" = 100'



CONSTRUCTION RECORD						SERVICE RECORD						
STATION	ELEVATION		DEPTH	MANHOLE	4-INCH "Y" BRANCHES		No. of Permit		House Number		DATE OF PERMITS	
	GROUND	GRADE			North West	South East	North West	South East	North West	South East	North West	South East
LATERAL 371, SOUTH WEST INTERCEPTOR SEWER												
LINE 1 0+00 L-1	91.00	69.80	21.2	0+00 EXIST. WET WELL								
						0+60 4" S 87.4		98-00347		4802 mt Carmel		8-6-99
1+00	91.00	69.95	21.1							4802 mt Carmel		4-8-98
2+00	91.00	70.10	20.9									
3+00	91.00	70.25	20.8									
	90.30	70.34 out	20.0	3+50.9 = 0+00 L-1A								
	90.30	70.44 in	19.9									
4+00	90.50	70.50	20.0									
5+00	91.20	70.65	20.5									
6+00	90.80	70.80	20.0									
	90.40	70.88 out	19.5	6+45.0		10" E 70.98						
	90.40	70.98 in	19.4									
7+00	89.60	71.05	18.5		6+70 4" W 86.0		97-11352-7		4802 cluster		7-1-97	
					7+40 4" W 86.1		97-11334-7		4806 cluster		7-1-97	
8+00	89.30	71.20	18.1		8+05 4" W 85.7		97-11387-7		4810 cluster		7-1-97	
	89.40	71.29	18.1	8+52.8								
9+00	88.90	71.35	17.6		8+70 4" W 85.8		97-11322-7		4814 cluster		7-1-97	
					9+65 4" W 86.0		98-10929-7		4818 cluster		6-17-98	
10+00	88.50	71.50	17.0		10+60 4" W 85.6		98-5537-7		4822 cluster		4-8-98	
11+00	90.00	71.65 out	18.4	10+90.0		8" STUB S 71.82						
	90.00	71.82 in	18.2									
	87.60	72.07 out	15.5	11+72.0 = 0+00 L-1B								
	87.60	72.17 in	15.4									
12+00	87.30	72.22	15.1									
					12+17 4" W 85.3		99-60472		4822 cluster		8-23-99	
13+00	87.50	72.52	15.0		13+10 4" W 85.1		99-00983-2		4827 cluster		10-4-99	
					13+82 4" W 85.3		99-3994-7		4905 cluster		3-3-99	
14+00	87.00	72.82	14.2		14+49 4" W 85.0		99-11897-7		4910 cluster		6-3-99	
15+00	86.60	73.12	13.5									
	87.00	73.14	13.9	14+95.6								
16+00	86.10	73.42	12.7		15+17 4" W 85.2		97-16246-7		4914 cluster		9-17-97	
					16+08 4" W 85.0							
17+00	85.30	73.72	11.6									
	86.00	73.94	12.1	17+63.4		8" STUB S 73.94						
LINE 1A 0+00 L-1A	90.30	70.44	19.9	0+00 = 3+60.9 L-1								
					0+50 4" W 86.2	0+25 4" E 86.3	98-3809-7	98-1702-7	4806 mt Carmel	4801 cluster	3-11-98	9-2-98
1+00	88.90	73.96	14.9			0+92 4" E 86.2		98-19372-7	4805 cluster		10-13-98	
					1+55 4" W 85.9	1+60 4" E 85.6	97-1992-7	98-24477-7	4810 mt Carmel	4804 cluster	10-24-97	8/3/98
2+00	88.20	77.47	10.7					99-3995-7	4813 cluster		3-3-99	
	88.10	79.00	9.1	2+43.4		4" STUB S 79.33		98-6941-7	4814 mt Carmel	4818 cluster	4-30-98	3-11-98
LINE 1B 0+00 L-1B	87.60	72.17	15.4	0+00 = 11+82.0 L-1								
					0+25 4" S 85.4		97-16350-7	97-16350-7	4824 cluster	4808 cluster		9-17-97
	88.40	75.00	13.4	0+80.6	4" RS W 88.4							
LINE 2 0+00 L-2	91.00	69.80	21.2	0+00 EXIST WETWELL								
					0+80 4" W 15V 43.1							
1+00	90.00	70.10	19.9			1+00 4" E 87.1						
2+00	88.20	70.40	17.8		2+10 4" W 15V 15.1	2+20 4" E 86.0	97-0095-1	98-2057-7	4825 Sheridan	4811 mt Carmel	10-19-99	2-9-98
	88.20	70.61 out	17.6	2+76.5								
	88.20	70.71 in	17.5									
3+00	87.90	70.80	17.1									
					3+63 4" W 86.0	3+42 4" E 85.9	99-4958-7	98-13214-7	4827 mt Carmel	4815 mt Carmel	3-22-99	7-8-98
4+00	89.10	71.10	18.0			4+31 4" E 85.7		97-19093-7	4817 mt Carmel		10-29-97	
5+00	90.00	71.40	18.6									
	89.70	71.49 out	18.2	5+27.8 = 0+00 L-2A								
	89.70	71.59 in	18.1									
6+00	89.10	72.52	16.6									
						6+28 4" E 85.4		97-16351-7	4823 cluster		9-17-97	
						6+90 4" E 85.2		97-16344-7	4827 cluster		9-17-97	
7+00	89.50	73.85	15.7									
	90.00	74.00 out	16.0	7+08.9								
	90.00	74.10 in	15.9		7+24 4" W 84.7	7+38 4" E 84.7	97-16354-7	98-3807	4902 mt Carmel	4901 cluster	9-17-97	10-31-97
8+00	88.50	74.46	14.0		7+71 4" W 84.8	7+99 4" E 85.0	98-3808-7	98-6460-7	4906 mt Carmel	4905 cluster	3-11-98	4-30-98

CONT. ON N-258
 4828 S. CLUSTER - Riser found at 55' SE of MH 0+80.6 instead of 45.6 as shown