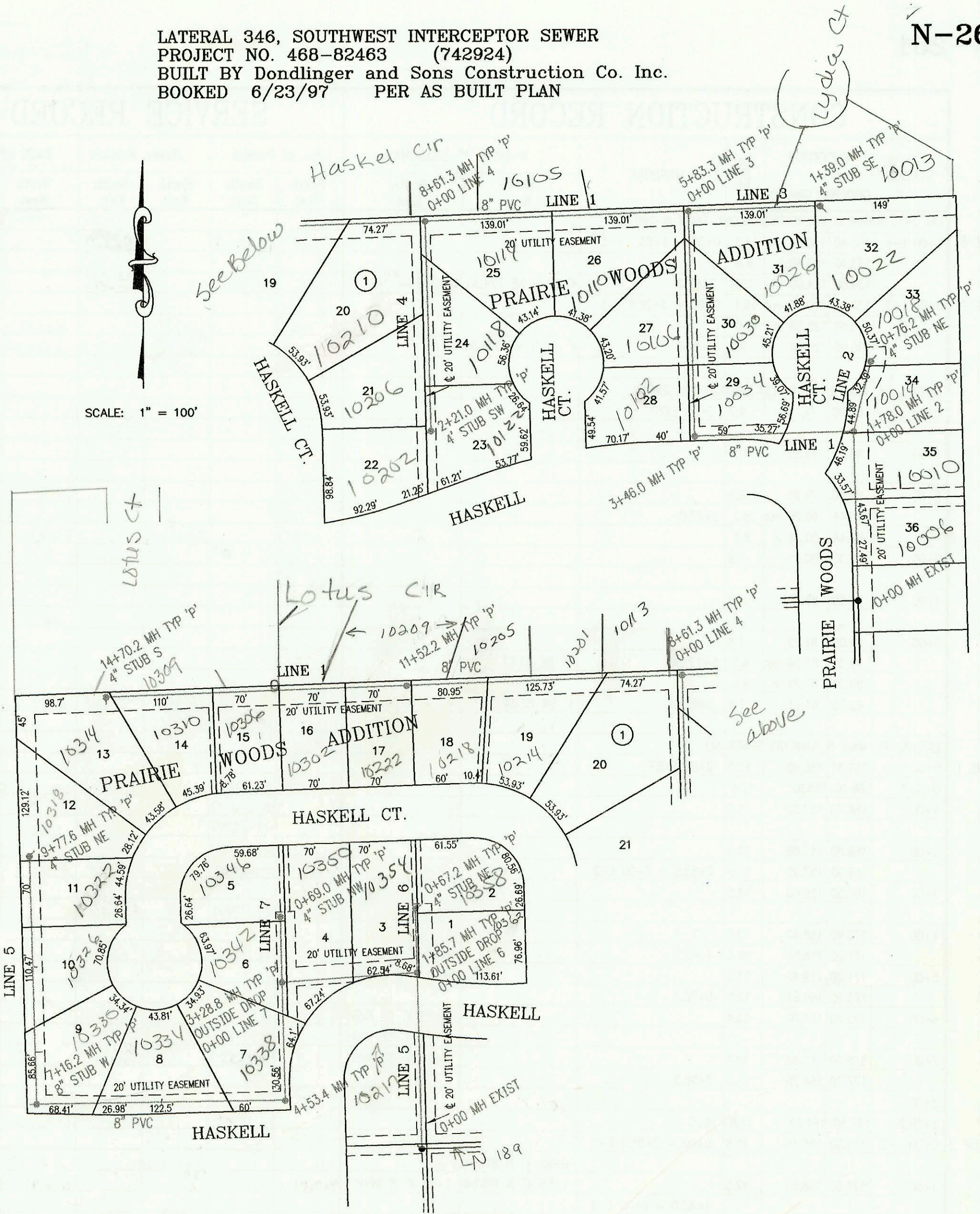


LATERAL 346, SOUTHWEST INTERCEPTOR SEWER
PROJECT NO. 468-82463 (742924)
BUILT BY Dondlinger and Sons Construction Co. Inc.
BOOKED 6/23/97 PER AS BUILT PLAN

N-260A



SCALE: 1" = 100'

CONSTRUCTION RECORD						SERVICE RECORD						
STATION	ELEVATION		DEPTH	MANHOLE	4-INCH "Y" BRANCHES		No. of Permit		House Number		DATE OF PERMITS	
	GROUND	GRADE			North West	South East	North West	South East	North West	South East	North West	South East
LATERAL 346, SOUTHWEST INTERCEPTOR SEWER												
LINE 1	0+00 L-1	127.74	114.44	13.3	0+00 EXIST			97-20471-7		10006 Haskell		11-12-97
	1+00	127.20	115.13	12.1		4" sch 40 1+30		97-13574-7		10010 Haskell		8-11-97
		127.70	115.56 out	12.1	1+78.0 = 0+00 L-2							
		127.70	115.66 in	12.0								
	2+00	126.40		126.4								
	3+00	128.00		128.0								
		126.80	116.33 out	10.5	3+46.0							
		126.80	116.43 in	10.4		4" sch 40 3+77		97-13882-7	97-21457	10102 Haskell	10034 Haskell	8-11-97 11-25-97
	4+00	126.80	116.65	10.2								
	5+00	127.10	117.05	10.0								
		127.30	117.38 out	9.9	5+83.3 = 0+00 L-3							
		127.30	117.48 in	9.8								
	6+00	127.10		127.1				97-20470-7		10110 Haskell		11-12-97
	7+00	127.80	117.95	9.9								
								2001 07213		10105 Haskell		9-5-01
	8+00	128.50	118.35	10.2								
		129.30	118.60	10.7	8+60.3 = 0+00 L-4							
	9+00	128.50	118.75	9.8								
								2001 07214		10113 Haskell		9-5-01
	10+00	129.20	119.15	10.0		4" sch 40 10+41.3		97-13707-7	97-13704-7	10211 Haskell		8-11-97
	11+00	130.90	119.55	11.3		4" sch 40 11+02.2		2001 07215	97-13703-7	10205 Haskell	10218 Haskell	9-5-01 8-11-97
		132.50	119.76	12.7	11+52.2	4" sch 40 11+22.2		97-10467-7		10222 Haskell		6-0-97
	12+00	132.20	119.95	12.3								
	13+00	132.40	120.35	12.0								
	14+00	132.60	120.75	11.9								
		133.30	121.03	12.3	14+70.2							
LINE 2	0+00 L-2	127.70	115.66	12.0	0+00 = 1+78.0 L-1			97-12264-7		10014 Haskell		7-17-97
		128.20	115.96	12.2	0+76.2	4" STUB N 118.29				10018 Haskell		7-17-97
LINE 3	0+00 L-3	126.30	117.48	8.8	0+00 = 5+83.3 L-1			97-12211-7		10016 Haskell		7-17-97
	1+00	125.60	117.88	7.7								
		125.70	118.04	7.7	1+39.0	4" STUB SE 118.37		97-13580-7		10022 Haskell		8-11-97
LINE 4	0+00 L-4	128.40	118.70	9.7	0+00 = 8+61.3 L-1							
						4" sch 40 0+87		97-13700-7		10210 Haskell		8-11-97
	1+00	129.40	119.10	10.3				97-20468-7		10118 Haskell		11-12-97
								97-13702-1		10206 Haskell		8-11-97
	2+00	131.10	119.50	11.6								
		131.30	119.58	11.7	2+21.0	4" STUB SW 119.91		97-13701-7	97-20472-7	10207 Haskell	10221 Haskell	8-11-97 11-12-97
LINE 5	0+00 L-5	134.71	117.71	17.0	0+00 EXIST							
						4" sch 40 0+50 4" W 13V4H		97-9618-7		10217 Haskell		6-10-97
	1+00	135.30	118.33	17.0								
		133.40	118.86 out	14.5	1+85.7 = 0+00 L-6							
		133.40	118.96 in	14.4								
	2+00	133.50		133.5		2+20 4" N 10V14H 2+85 4" N 11V14H		97-20491-7 97-20493-7		10354 Haskell 10350 Haskell		11-12-97 11-12-97
	3+00	134.90	119.42	15.5								
		135.60	119.53 out	16.1	3+28.8 = 0+00 L-7							
		135.60	119.63 in	16.0								
	4+00	135.20	119.92	15.3		4+10 4" W 11V4H		97-21147-7		10358 Haskell		11-25-97
		135.50	120.15 out	15.4	4+53.4							
		135.50	120.25 in	15.3								
	5+00	135.80	120.42	15.4								
						5+85 4" N 13V9H						
	6+00	137.00	120.82	16.2								
	7+00	138.00	121.22	16.8								
		139.00	121.33 out	17.7	7+16.2	8" STUB W 121.43						
		139.00	121.43 in	17.6								
	8+00	136.60	121.72	14.9		7+70 4" E 11V9H 8+60 4" E 10V9H		98-7530-7 98-7046-7		10330 Haskell 10326 Haskell		4-21-98 1-26-98
	9+00	136.80	122.12	14.7		9+40 4" E 10V9H						
		137.00	122.50	14.5	9+77.6	4" STUB NE 122.83		98-7531-7		10318 Haskell		4-21-98